



**4331 EUCALYPTUS AVE. ~~ CHINO, CA 91710**  
**909-597-7800 Fax 909-597-7185**

**FTS21031BK**  
**Rear Leaf Spring Hanger**  
**2001 - 2006 GM 2500 HD 4WD**

**PARTS LIST:**

<b>Qty</b>	<b>Part #</b>	<b>Description</b>
1	FT20250BK	Front Hanger Bracket Driver
1	FT20257BK	Front Hanger Bracket Pass
2	FT20251BK	Rear Hanger Bracket
2	FT20252BK	Rear Hanger Support
1	FT50184	Nut Tab (driver side)
30	43141501052	7/16"-14 x 1 1/2" Hex Cap Bolt
29	43140003052	7/16"-14 Ny-Lock Nut
1	43000005252	7/16" Split Washer
59	43000005052	7/16" SAE Flat Washer
2	FT21031i	Instruction Sheet

**TOOL LIST:**

- Assorted Metric & Standard Wrenches
- Torque Wrench
- Floor Jack
- Jack Stands
- Die Grinder with cutoff wheel
- Air Hammer with Blade and Punch Bits
- Heavy Duty Ratchet Strap
- Drill with 1/4" & 7/16" Drill Bits



**FTS21031BK**  
**Rear Leaf Spring Hanger**  
**2001 - 2006 GM 2500 HD 4WD**

**WARNING**

**DO NOT CUT OR MODIFY STOCK HITCH OR SHACKLE FRAME MOUNT IN ANYWAY**

**HANGER KIT WILL NOT WORK ON THE LONG BED MODELS.**

**READ ALL INSTRUCTIONS THOROUGHLY FROM START TO FINISH BEFORE BEGINNING INSTALLATION.**

**CHECK ALL PARTS INCLUDED IN THIS KIT TO THE PARTS LIST ABOVE BEFORE BEGINNING INSTALLATION OF THIS KIT. IF ANY PARTS ARE MISSING, CONTACT FABTECH AT 909-597-7800.**

**DO NOT ALTER THE FINISH OF THESE COMPONENTS, EXAMPLE- CHROMING, ZINC PLATING OR PAINTING. CHANGING THE FINISH CAN CAUSE STRUCTURAL FATIGUE OF COMPONENTS.**

**SOME VEHICLES MAY REQUIRE AN EXHAUST MODIFICATION. MAKE SURE TO CHECK FOR PROPER CLEARANCE AFTER INSTALLATION IS COMPLETED.**

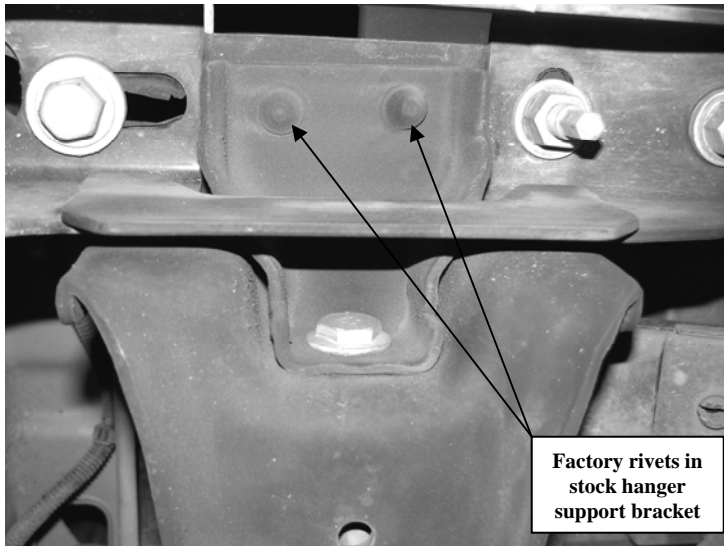
**THIS SYSTEM IS DESIGNED FOR THE FABTECH LONG TRAVEL LEAF SPRINGS OR USE WITH STOCK LEAF SPRINGS WITHOUT FABTECH TRACTION BARS**

**THIS SYSTEM WILL WORK WITH PICK UP TRUCKS ONLY. SYSTEM WILL NOT FIT ¾ TON SUV MODEL VEHICLES**

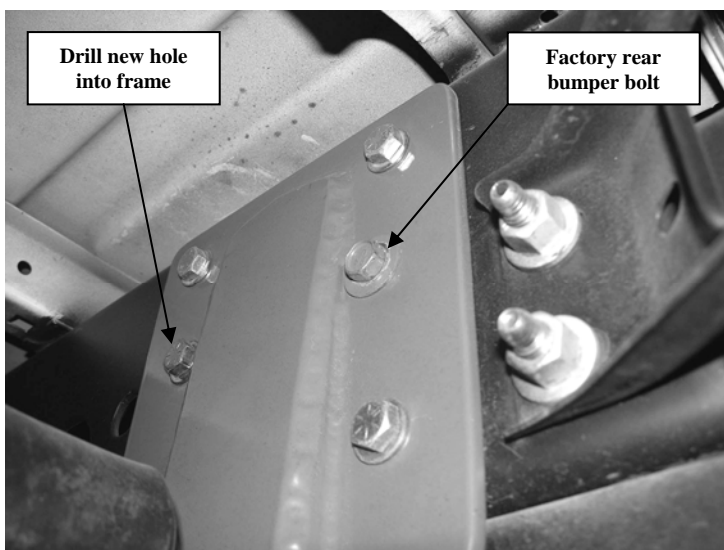
**INSTALLATION INSTRUCTIONS:**

1. Disconnect the negative terminal on the battery. With the vehicle on level ground, set the emergency brake and block the front tires. Locate the spare tire key and handle and remove the spare tire. Set spare tire aside for later install. **(This will allow access to the rear hanger bolts).** Jack up the rear end of the truck and support the frame rails with jack stands. **NEVER WORK UNDER AN UNSUPPORTED VEHICLE!** Remove the rear tires. Support the rear axle with a floor jack just enough so that axle does not hang freely.
2. Use a heavy-duty ratchet strap and place it around the gas tank hanging it from the frame rail and bed support. Leave a small amount of slack in the strap. Next, loosen the hose clamp that attaches the gas filler tube to the bed. **(This is to allow the tank to be moved for access to the front hanger bolts).** With the strap secure, slowly remove only the inner **rear tank strap** bolt. This will allow the tank to be lowered on to the ratchet strap. Only lower the strap enough to allow the tank to be moved. If the tank is lowered too much, it will over extend the fuel lines and sending unit. . **Note: If truck is equipped with a gas tank**
3. **skid plate, it will need to be removed first. Save it and hardware for re-installation.**
3. Working from the driver side, remove and save the front leaf spring bolt and factory nut from the spring hanger and the rear shackle bolt and factory nut from the rear shackle mount. (use care when moving the gas tank, it has limited mobility). Loosen but do not remove the bolt that attaches the spring to the shackle. Lower the floor jack enough to remove the leaf spring from the front hanger and the rear shackle mount. Make sure not to over extend the brake lines.
4. Use a die grinder with a cut off wheel to make an X cut in the face of the rivets on the front hanger and rear shackle mount. Next, use an air hammer with a chisel bit to remove the heads of the rivets. Follow that with the air hammer and a punch bit to completely remove the rivets from the frame. On the rear shackle mount, remove and save the factory bolt for the bumper bracket. Remove and discard the hanger and the shackle mount

5. Using a drill with a 1/4" bit, drill the center of the two rivets that hold the factory hanger support bracket to the bottom of the frame. Once the holes are drilled completely through rivets, use an air hammer with a chisel bit to remove the head of the rivets. Follow that with the air hammer and a punch bit to completely remove the rivets from the frame. SEE PHOTO BELOW

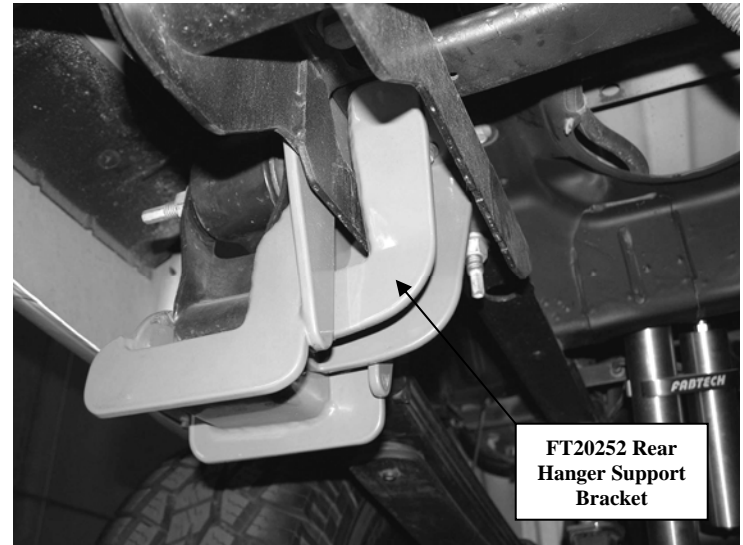


6. Using a drill with a 7/16" drill bit, drill out all the holes in the frame ONLY where the rivets were previously removed.
7. Locate FT20251BK Rear Shackle Frame Mount (drv. side) and supplied 7/16" hardware. Attach the Shackle Mount to the frame in the stock location with the supplied 7/16" hardware. Locate and install the factory bolt for the bumper bracket. Using a drill with a 7/16" drill bit, drill a new hole into the frame for the middle hole on the front side of the shackle mount (**no factory rivet**) and install a supplied 7/16" bolt and hardware. Torque to 55 lbs. SEE PHOTO BELOW

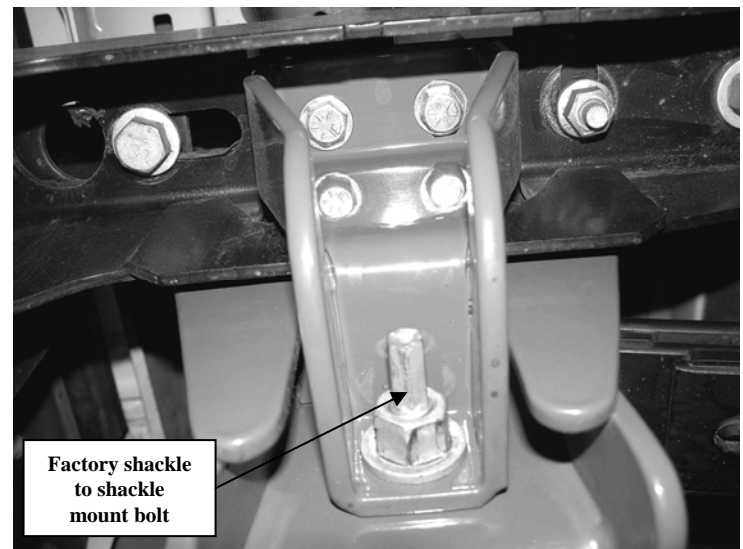


8. Locate FT20252 Rear Hanger Support Bracket and the factory rear shackle hardware. Position the bracket up onto

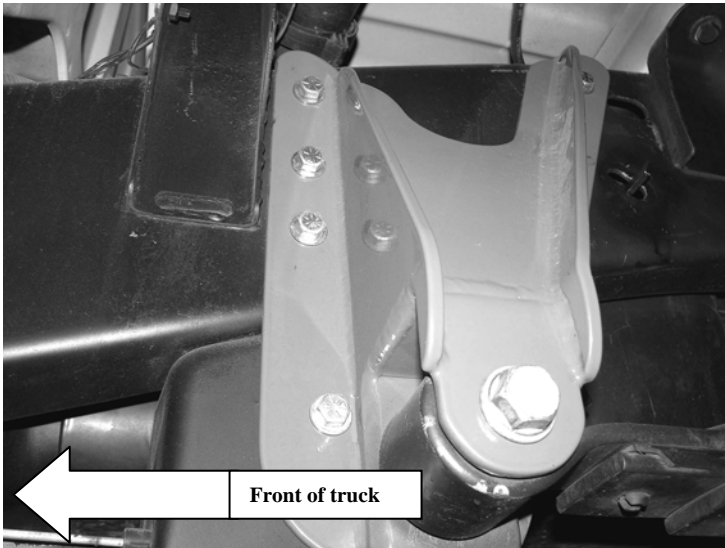
the bottom of the frame rail and align it with the new shackle mount. Insert the factory hardware into the new shackle mount and the support bracket. Install the new support bracket and install two supplied 7/16" bolts and hardware. Torque to 55 lbs. SEE PHOTOS IN NEXT COLUMN



Rear spring shown installed for photo only



9. Locate an FT20250BK Hanger Bracket (drv. side) and FT50184 nut tab (drv. side). Use the supplied 7/16" hardware, attach the new Hanger to the frame in the stock location (use the nut tab and split washer on the second hole from the top on the rear of the hanger) and torque to 55 lbs. Tighten the ratchet strap enough to get the factory bolt back through the strap and started back into the mounting location. (**Re-install the factory gas tank skid plate if equipped at this time**). Re-install the gas filler neck back onto the bedside with the factory hardware. SEE PHOTOS BELOW AND ON NEXT PAGE



Rear spring shown installed for photo only



Rear spring shown installed for photo only

**IF YOU ARE INSTALLING NEW LIFT  
BLOCKS, FOLLOW STEPS 10 through 12**

**IF YOU ARE INSTALLING NEW LONG  
TRAVEL LEAF SPRINGS,  
FOLLOW STEPS 12 through 15**

10. Raise the floor jack enough to locate the spring eyes into the hanger and shackle mount. Install the stock bolts and nut tabs through the springs and hangers and leave loose.
11. Locate and install the new rear lift blocks (not included in this kit). The short end of the blocks should face to the front of the vehicle. Using the new u-bolts, nuts, and washers, align the axle, lift blocks, and springs and torque to U-Bolts to 90lbs.
12. Repeat steps two through eleven (**ten and eleven with block install only**) on the passenger side of the truck (with the exception of the nut tab).
13. Remove the u-bolts from truck and discard. Lower the axle down slowly. Use care not to over extend the brake hose.
14. Remove the complete leaf spring packs from the truck and discard. Save the factory hardware and shackles. **If your truck is equipped with a factory over load leaf on top of the factory leaf spring pack, you will NOT be able to reuse it with this replacement leaf pack.**
15. Locate the new rear leaf springs (not included in this kit) and install into the factory position using factory hardware. Use the new u-bolts and hardware provided with that kit.

### **CONTINUE INSTALLATION (ALL KITS)**

16. Recheck all bolts for proper torque. Recheck brake hoses and lines for proper clearances.
17. Install tires and wheels and torque lug nuts to wheel manufacturer's specifications. Re-install spare tire and put key back into the truck. With the truck on the ground, torque the two spring bolts and the one shackle bolt on both sides of the truck to 70 lbs
18. Readjust headlights and check the front-end alignment and set to the factory specifications. Re-torque all hardware after 500 miles of driving.

**RETORQUE ALL NUTS, BOLTS AND LUGS AFTER 50 MILES AND PERIODICALLY THEREAFTER.**

For technical assistance call: 909-597-7800

## Product Warranty and Warnings-

Fabtech provides a Limited Lifetime Warranty to the original retail purchaser who owns the vehicle, on which the product was originally installed, for defects in workmanship and materials.

The Limited Lifetime Warranty excludes the following Fabtech items; bushings, bump stops, ball joints, tie rod ends, limiting straps, cross shafts, heim joints. These parts are subject to wear and are not considered defective when worn. They are warranted for 60 days from the date of purchase for defects in workmanship.

Take apart shocks are considered a serviceable shock with a one year warranty on leakage only. Service seal kits are available separately for future maintenance. All other shocks are covered under our Limited Lifetime Warranty.

Fabtech does not warrant any product for finish, alterations, modifications and/or installation contrary to Fabtech's instructions. Alterations to the finish of the parts including but not limited to painting, powdercoating, plating and/or welding will void all warranties. Some finish damage may occur to parts during shipping which is considered normal and is not covered under warranty.

Fabtech products are not designed nor intended to be installed on vehicles used in race applications or for racing purposes or for similar activities. (A "RACE" is defined as any contest between two or more vehicles, or any contest of one or more vehicle against the clock, whether or not such contest is for a prize). This warranty does not include coverage for police or taxi vehicles, race vehicles, or vehicles used for government or commercial purposes. Also excluded from this warranty are sales outside of the United States of America.

Installation of most suspension products will raise the center of gravity of the vehicle and will cause the vehicle to handle differently than stock. It may increase the vehicle's susceptibility to a rollover, on road and off road, at all speeds. Extreme care should be taken to operate the vehicle safely at all times to prevent rollover or loss of control resulting in serious injury or death. Fabtech front end Desert Guards may impair the deployment or operation of vehicles equipped with supplemental restraining systems/air bag systems and should not be installed if the vehicle is equipped as so.

Fabtech makes every effort to ensure suspension product compatibility with all vehicles listed in the catalog, but due to unknown auto manufacturer's production changes and/or inconsistencies by the auto manufacturer, Fabtech cannot be responsible for 100% compatibility, including the fitment of tire and wheel sizes listed. The Tire and Wheel sizes listed in Fabtech's catalog are only a guideline for street driving with noted fender trimming. Fabtech is not responsible for damages to the vehicle's body or tires.

Fabtech's obligation under this warranty is limited to the repair or replacement, at Fabtech option, of the defective product only. All costs of removal, installation or re-installation, freight charges, incidental or consequential damages are expressly excluded from this warranty. Fabtech is not responsible for damages and/or warranty of other vehicle parts related or non related to the installed Fabtech product. This warranty is expressly in lieu of all other warranties expressed or implied. This warranty shall not apply to any product that has been subject to accident, negligence, alteration, abuse or misuse as determined by Fabtech.

Fabtech suspension components must be installed as a complete system including shocks as shown in our current catalog. All warranties will become void if Fabtech parts are combined and/or substituted with other aftermarket suspension products. Combination and/or substitution of other aftermarket suspension parts may cause premature wear and/or product failure resulting in an accident causing injury or death. Fabtech does not warrant products not manufactured by Fabtech.

Installation of Fabtech product may void the vehicles factory warranty; it is the consumer's responsibility to check with their local vehicle's dealer for warranty disposition before the installation of the product.

It is the responsibility of the distributor and/or the retailer to review all warranties and warnings of Fabtech products with the consumer prior to purchase.

Fabtech reserves the right to supercede, discontinue, change the design, finish, part number and, or application of parts when deemed necessary without written notice. Fabtech is not responsible for misprints or typographical errors within the catalog or price sheet.