



www.fabtechmotorsports.com

4331 EUCALYPTUS AVE. CHINO, CA. 91710
PHONE 909-597-7800 FAX 909-597-7185

HD Reduced Offset Spindle Kit
FTS21059
2001 - 2007 CHEVROLET K2500HD

PARTS LIST:

FTS21059 01-07 K2500HD Reduced Offset Spindle		
Qty	Part #	Description
1	FT20246D	Drv. Spindle
1	FT20246P	Pass. Spindle
2	FT20247	C.V. Spacer
1	FT20425	Hdwr Sub-Assembly Kit

FT20425 Hdwr Sub-Assembly Kit		
Qty	Part #	Description
1	FT20321	Hardware Kit
2	FT21059i	Instruction Sheet

HARDWARE LIST:

Hardware Kit	
Qty.	Description
12	10mm x 1.5 x 60mm Bolt
12	10mm Flat Washer
1	Thread Locking Compound
1	1/2"-13 x 1 1/4" Bolt (DO NOT USE)
1	1/2" 13 Steel Lock Nut (DO NOT USE)
2	1/2" SAE Flat Washer (DO NOT USE)
2	1/4"-20 x 3/4" Bolt (DO NOT USE)
2	1/4" SAE Flat Washer (DO NOT USE)
2	1/4" Split Lock Washer (DO NOT USE)

TOOL LIST: (NOT INCLUDED)

- **FLOOR JACK**
- **JACK STANDS**
- **ASSORTED METRIC AND S.A.E SOCKETS, & ALLEN WRENCHES**

REPLACE THESE SPINDLES IN PAIRS, DO NOT REPLACE A SINGLE SIDE ALONE.

INSTALLATION OF THIS SUSPENSION SYSTEM WILL NOT ALLOW THE USE OF THE FACTORY WHEELS OR SPARE TIRE ON THE FRONT SUSPENSION

READ ALL INSTRUCTIONS THOROUGHLY FROM START TO FINISH BEFORE BEGINNING INSTALLATION! IF THESE INSTRUCTIONS ARE NOT PROPERLY FOLLOWED, SEVERE FRAME OR UPPER CONTROL ARM DAMAGE MAY RESULT TO THE VEHICLE.

CHECK ALL PARTS INCLUDED IN THIS KIT TO THE PARTS LIST ABOVE BEFORE BEGINNING INSTALLATION OF THE KIT. IF ANY PIECES ARE MISSING, CONTACT FABTECH AT 909-597-7800.

FABTECH RECOMMENDS AFTER MARKET WHEELS WITH A MAXIMUM BACKSPACING OF 4 5/8".

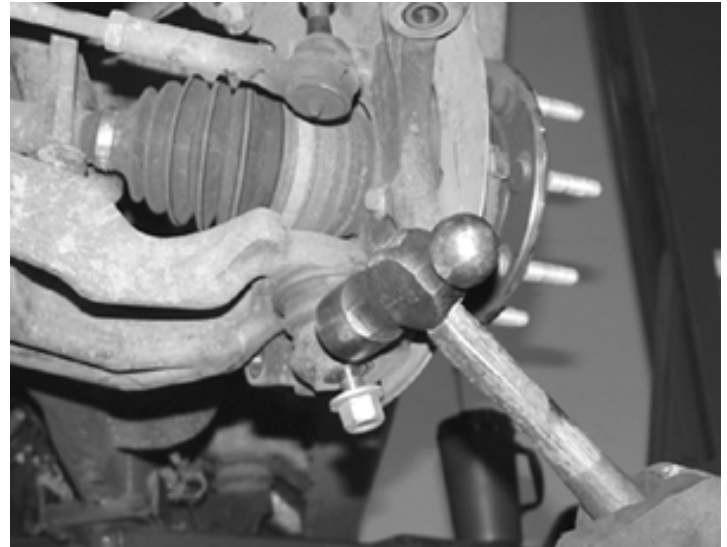
VEHICLES THAT WILL RECEIVE OVERSIZED TIRES SHOULD CHECK BALL JOINTS, TIE RODS ENDS AND IDLER ARM EVERY 2500-5000 MILES FOR WEAR AND REPLACE AS NEEDED

INSTRUCTIONS:

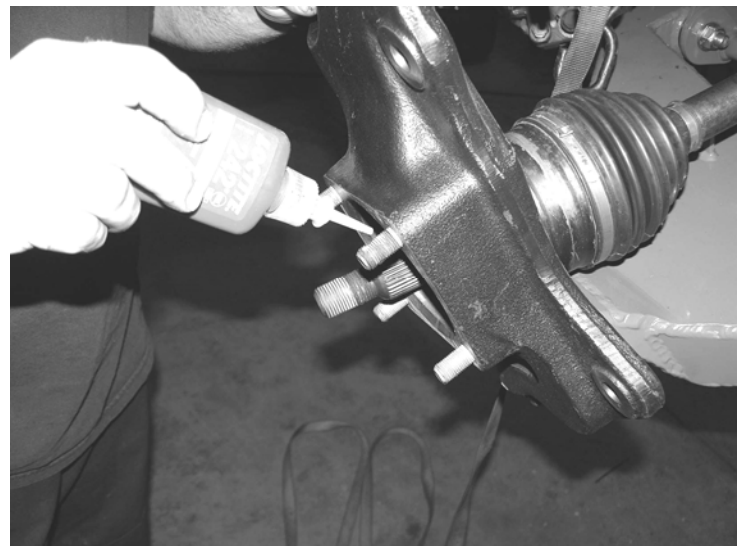
1. Disconnect the negative terminal on the battery. Jack up the front end of the truck and support the frame rails with jack stands. **NEVER WORK UNDER AN UNSUPPORTED VEHICLE!** Remove the front tires.
2. Working from the Driver's side, disconnect the tie rod end from the steering knuckle by striking the knuckle to dislodge the tie rod end. Use care not to damage the tie rod end when removing. SEE PHOTO BELOW.

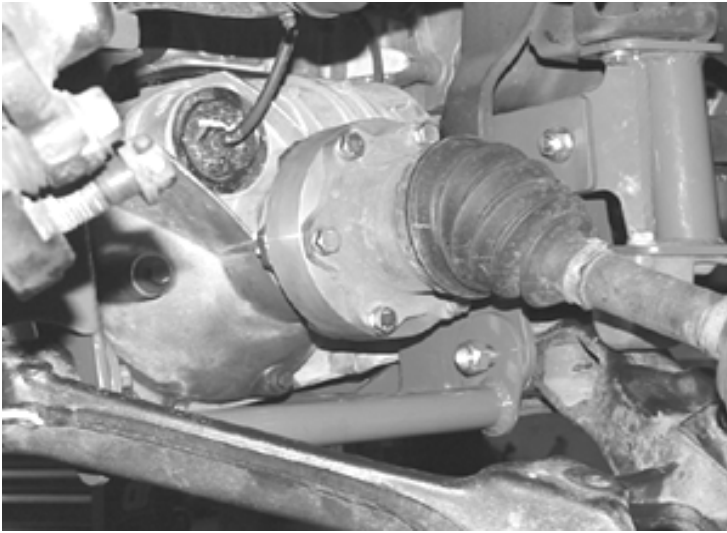


3. Remove the brake hose bracket from the top of the steering knuckle. Unplug the ABS brake connection from the frame and control arm. Remove the caliper from the rotor and secure the brake caliper to the frame out of the way. **DO NOT ALLOW THE BRAKE CALIPER HANG FROM THE BRAKE LINE HOSE**
4. Remove brake rotor from the steering knuckle. Remove axle nut, washer and the 4 hub bolts on backside of knuckle. Remove bearing hub assembly including the O ring from knuckle. Retain parts and hardware for reinstallation.
5. Follow the antilock brake sensor wire from the hub to the frame rail. Separate the wire from the upper control arm and separate from the connector at the frame. **DO NOT DISCONNECT THE ABS LINE FROM THE HUB.**
6. Remove the upper and lower ball joint nuts. Disconnect the upper and lower ball joints from the steering knuckle by striking the knuckle with a large hammer next to each ball joint on the knuckle to dislodge the ball joints. Use care not to hit the ball joints when removing. Save the ball joint nuts and discard the knuckle. SEE PHOTO BELOW.

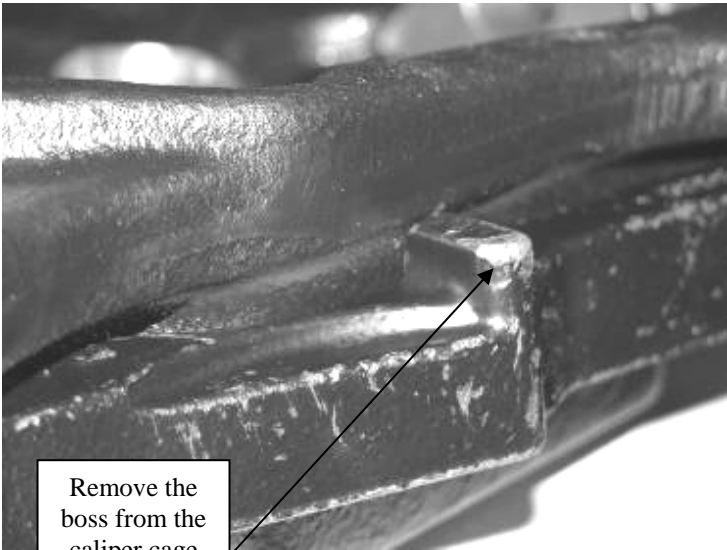


7. Disconnect CV axles from differential housing and remove axle assembly. Save the axle shaft, nut, and washer. Discard the CV Flange hardware.
8. Attach the steering knuckle FT20246D for the driver side to the upper control arm and to the lower control arm using the stock hardware. Torque the upper ball joint to 35LBS and lower to 70 lbs. Reattach the tie rod and torque to 30LBS
9. Position the C.V. axle through the spindle and install the stock hub bearing assembly taking care to place O ring in the proper position. (apply thread lock compound to the four hub bolts). Attach nut and washer. **USE CARE NOT TO OVER EXTEND THE CV BOOTS ON THE AXLES.** Locate and install the Fabtech CV spacers between the CV axle and the differential housing using 10mm x 40mm bolts and washers from Hardware kit FT20321 with the provided thread lock compound and torque to 55 lbs. in a cross pattern. Torque axle nut to 150 lbs SEE PHOTO BELOW.

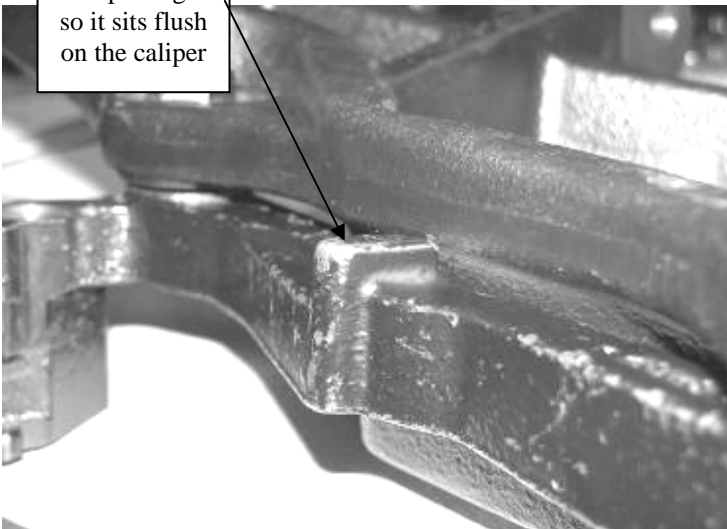




10. Reinstall brake rotor and caliper. **Note: If your brake caliper cage has the boss shown below, it must be ground / sanded flush with the cage before mounting the calipers. SEE PHOTOS.** Torque caliper bolts to 70LBS. Route the brake hose and ABS line to the steering knuckle using the factory steel guide clamp to the rear side of the steering knuckle and attach with 1/4" x 3/4" bolt and washer from Hardware kit FT20077. Torque to 10LBS.

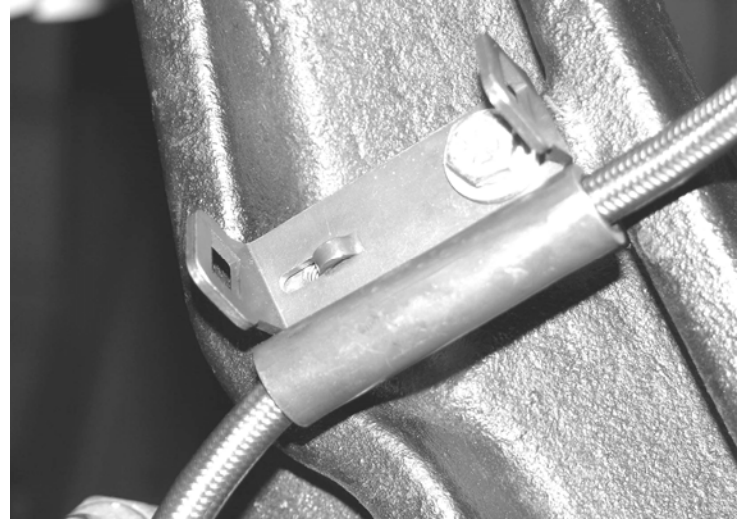


Remove the boss from the caliper cage so it sits flush on the caliper



Photos show caliper cage and knuckle off of truck for photo only

11. Route the brake hose to the steering knuckle using the factory steel guide clamp to the back side of the steering knuckle and to the control arm bracket with supplied 1/4" x 1" bolts, nuts and washers. Torque to 5lbs. SEE PHOTOS BELOW.



12. Route the A.B.S. wire with the brake line and re-connect it to the loose end in the wheel well. Check to make sure that the brake hose and ABS line is routed as to allow full turning radius to the steering without tire or suspension component contact. Use provided plastic zip ties to secure line and hose to the upper control arm and knuckle away from the tire and wheel.
13. Repeat steps two through eleven on the driver side of the truck.
14. Reinstall the front tires and torque the wheel lugs to factory specifications, located in the owners manual. Set the truck back on the ground. **WHILE TURNING THE STEERING WHEEL FULLY IN EACH DIRECTION, MAKE SURE THERE IS AMPLE CLEARANCE BETWEEN THE WHEELS, TIRES, CONTROL ARMS, BRAKE LINES AND ABS WIRES.**
15. Check front-end alignment and set to factory specifications. Re-adjust headlights

INSTALLATION OF THIS SPINDLE SYSTEM WILL NOT ALLOW THE USE OF THE FACTORY WHEELS OR SPARE TIRE ON THE FRONT SUSPENSION

RETORQUE ALL NUTS, BOLTS AND LUGS AFTER 50 MILES AND PERIODICALLY THEREAFTER.

For technical assistance call: 909-597-7800

Product Warranty and Warnings-

Fabtech provides a Limited Lifetime Warranty to the original retail purchaser who owns the vehicle, on which the product was originally installed, for defects in workmanship and materials.

The Limited Lifetime Warranty excludes the following Fabtech items; bushings, bump stops, ball joints, tie rod ends, limiting straps, cross shafts, heim joints. These parts are subject to wear and are not considered defective when worn. They are warranted for 60 days from the date of purchase for defects in workmanship.

Take apart shocks are considered a serviceable shock with a one year warranty on leakage only. Service seal kits are available separately for future maintenance. All other shocks are covered under our Limited Lifetime Warranty.

Fabtech does not warrant any product for finish, alterations, modifications and/or installation contrary to Fabtech's instructions. Alterations to the finish of the parts including but not limited to painting, powdercoating, plating and/or welding will void all warranties. Some finish damage may occur to parts during shipping which is considered normal and is not covered under warranty.

Fabtech products are not designed nor intended to be installed on vehicles used in race applications or for racing purposes or for similar activities. (A "RACE" is defined as any contest between two or more vehicles, or any contest of one or more vehicle against the clock, whether or not such contest is for a prize). This warranty does not include coverage for police or taxi vehicles, race vehicles, or vehicles used for government or commercial purposes. Also excluded from this warranty are sales outside of the United States of America.

Installation of most suspension products will raise the center of gravity of the vehicle and will cause the vehicle to handle differently than stock. It may increase the vehicle's susceptibility to a rollover, on road and off road, at all speeds. Extreme care should be taken to operate the vehicle safely at all times to prevent rollover or loss of control resulting in serious injury or death. Fabtech front end Desert Guards may impair the deployment or operation of vehicles equipped with supplemental restraining systems/air bag systems and should not be installed if the vehicle is equipped as so.

Fabtech makes every effort to ensure suspension product compatibility with all vehicles listed in the catalog, but due to unknown auto manufacturers production changes and/or inconsistencies by the auto manufacturer, Fabtech cannot be responsible for 100% compatibility, including the fitment of tire and wheel sizes listed. The Tire and Wheel sizes listed in Fabtech's catalog are only a guideline for street driving with noted fender trimming. Fabtech is not responsible for damages to the vehicle's body or tires.

Fabtech's obligation under this warranty is limited to the repair or replacement, at Fabtech option, of the defective product only. All costs of removal, installation or re-installation, freight charges, incidental or consequential damages are expressly excluded from this warranty. Fabtech is not responsible for damages and/or warranty of other vehicle parts related or non related to the installed Fabtech product. This warranty is expressly in lieu of all other warranties expressed or implied. This warranty shall not apply to any product that has been subject to accident, negligence, alteration, abuse or misuse as determined by Fabtech.

Fabtech suspension components must be installed as a complete system including shocks as shown in our current catalog. All warranties will become void if Fabtech parts are combined and/or substituted with other aftermarket suspension products. Combination and/or substitution of other aftermarket suspension parts may cause premature wear and/or product failure resulting in an accident causing injury or death. Fabtech does not warrant products not manufactured by Fabtech.

Installation of Fabtech product may void the vehicles factory warranty; it is the consumer's responsibility to check with their local vehicle's dealer for warranty disposition before the installation of the product.

It is the responsibility of the distributor and/or the retailer to review all warranties and warnings of Fabtech products with the consumer prior to purchase.

Fabtech reserves the right to supercede, discontinue, change the design, finish, part number and, or application of parts when deemed necessary without written notice. Fabtech is not responsible for misprints or typographical errors within the catalog or price sheet.