



INSTALLATION INSTRUCTIONS

**2011-2019 CHEVY 2500HD/3500HD
TRACTION BARS**

FTS61006

FT21233i

Fabtech Motorsports | 4331 Eucalyptus Ave. Chino, CA 91710

Tech Line: 909-597-7800 | **Fax:** 909-597-7185 | **Web:** www.fabtechmotorsports.com

- PARTS LIST -

FTS61006		CHEVY 2500HD/3500HD TRACTION BARS
4	FT20722	WELD-ON AXLE MOUNT
1	FT20741	TRACTION BAR (DRIVER)
1	FT20742	TRACTION BAR (PASSENGER)
1	FT20755	HARDWARE SUBASSEMBLY
1	FT20760	FRONT TRACTION BAR MOUNT (DRIVER)
1	FT20761	FRONT TRACTION BAR MOUNT (PASSENGER)
2	FT90018	TRACTION BAR SHACKLE

FT20755		HARDWARE SUBASSEMBLY
2	FT66	SLEEVE .625 X .509 X 2.000
4	FT1004	SWAY BAR LINK BUSHING HALF
1	FT20723	BRAKE CABLE BRACKET
2	FT20726	NUT TAB
2	FT20727	NUT TAB
1	FT20729	BRAKE LINE BRACKET
8	FT20731	TRACTION BAR SPACER
1	FT20756	HARDWARE KIT
1	FTAS16	DRIVER WARNING DECAL
1	FTAS12	STICKER FT BLUE 10X4
1	FTREGCARD	REGISTRATION CARD
1	FT21233i	INSTRUCTIONS
6	FT95243	3/4" ROD END
1	FTLOCK	THREAD LOCKING COMPOUND

FT20756 - HARDWARE KIT		LOCATION
6	JAM NUT 3/4-16 RH	
4	3/4-10 X 3-1/4" HEX BOLT G8	
2	3/4-10 X 2-1/2" HEX BOLT G8	
12	3/4" SAE WASHER	
6	3/4-10 C-LOCK NUT	
2	1/2-13 X 1-1/4" HEX BOLT G8	
2	1/2-13 X 3-1/2" HEX BOLT G8	
4	1/2 SAE WASHER	
1	5/16-18 X 1" HEX BOLT	
3	5/16-18 X 3/4" SELF TAP SCREW	
1	5/16-18 NYLOCK NUT	
2	5/16" SAE WASHER	
1	3/8-16 NYLOCK NUT	
1	3/8-16 X 1-1/4" HEX BOLT	
2	3/8" SAE WASHER	
1	THREAD LOCKING COMPOUND	

- TOOL LIST -

Required Tools (Not Included)

- Basic Hand Tools
- Floor Jack
- Jack Stands
- Assorted Metric and S.A.E sockets, and Allen wrenches
- Welder
- Sander
- Torque Wrench

- PRE-INSTALLATION NOTES -

For technical assistance call: **909-597-7800** or e-mail: **info@fabtechmotorsports.com**

READ THIS BEFORE YOU BEGIN INSTALLATION -

Check all parts to the parts list above before beginning installation. If any parts are missing contact Fabtech at 909-597-7800 and a replacement part will be sent to you immediately.

Read all instructions thoroughly from start to finish before beginning the installation. If these instructions are not properly followed severe frame, driveline and / or suspension damage may occur.

Check your local city and state laws prior to the installation of this system for legality. Do not install if not legal in your area.

Prior to the installation of this suspension system perform a front end alignment and record. Do not install this system if the vehicle alignment is not within factory specifications. Check for frame and suspension damage prior to installation.

The installation of this suspension system should be performed by two professional mechanics.

This suspension must be installed with Fabtech shock absorbers.

Use the provided thread locking compound on all hardware.

WARNING- Installation of this system will alter the center of gravity of the vehicle and may increase roll over as compared to stock.

Vehicles that receive oversized tires should check ball joints, uniballs, tie rods ends, pitman arm and idler arm every 2500-5000 miles for wear and replace as needed.

Verify differential fluid is at manufactures recommended level prior to kit installation. Installation of the kit will reposition the differential and the fill plug hole may be in a different position. (For example, if the manufacture recommends 3 quarts of fluid, make sure the diff has 3 quarts of fluid). Check your specific manual for correct amount of fluid

THE INSTALLATION OF THIS KIT REQUIRES WELDING, AND SHOULD BE PERFORMED BY A CERTIFIED WELDER

FOOTNOTES -

- INSTALLATION REQUIRES WELDING

- INSTRUCTIONS -

FRONT SUSPENSION

1. Disconnect the negative terminal on the battery. Jack up the rear end of the truck and support the frame rails with jack stands. **NEVER WORK UNDER AN UNSUPPORTED VEHICLE!** Remove the rear tires.
2. **(DRIVERS SIDE)** With the rear axle supported, remove the ubolts and ubolt plate. Save all parts and hardware. **SEE FIGURE 1**



FIGURE 1 - STEP 2

3. Sand the coating off the front of the axle bump stop pad and axle housing. **SEE FIGURE 2**

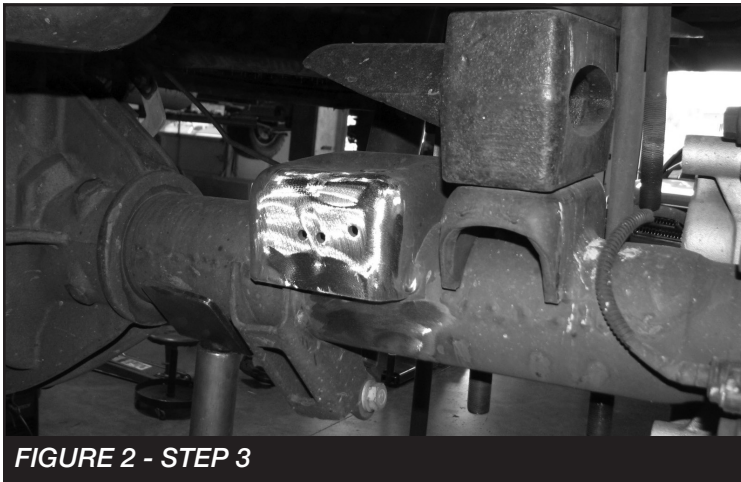


FIGURE 2 - STEP 3

4. Locate the factory block perch on the axle. Measure 3-9/16" and mark a straight line down the axle bump stop pad. **SEE FIGURES 3-4**



FIGURE 3 - STEP 4



FIGURE 4 - STEP 4

5. Locate (2) FT20722 (Weld on axle mount), (2) FT95243 (3/4" Rod End), (4) FT20731 (Spacer) and 3/4" bolts, nuts and washers. Assemble the parts like shown in **FIGURE 5-6**



FIGURE 5 - STEP 5

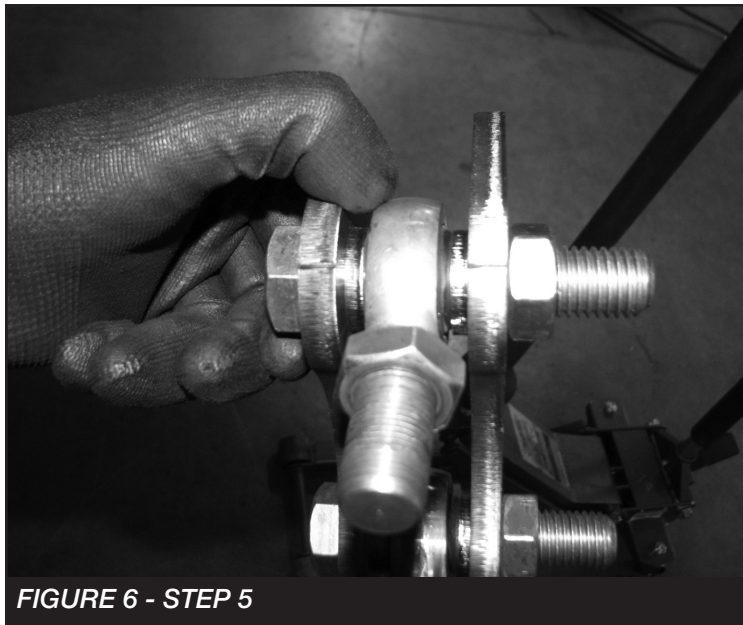


FIGURE 6 - STEP 5

6. Install the assembled part by lining up the inside bracket with the line you made on step 4. Tack weld into place. **SEE FIGURE 7**

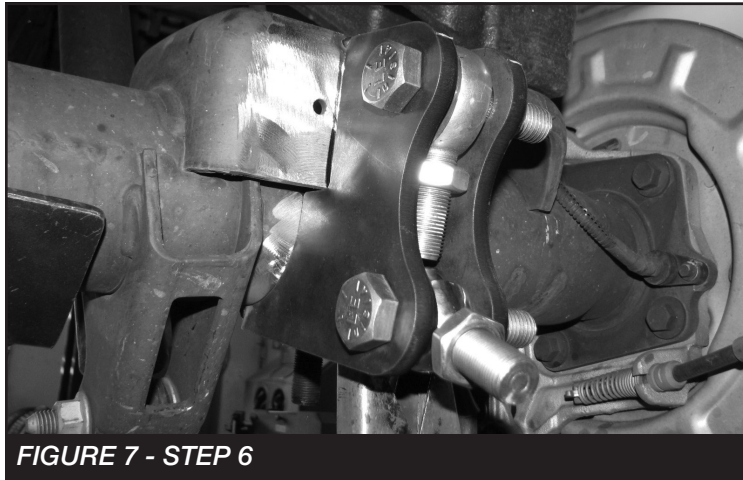


FIGURE 7 - STEP 6

7. Remove the hardware and rod ends. Carefully weld the brackets to the bump stop pad and axle. Once cooled paint all bare surfaces. **SEE FIGURES 8-10**



FIGURE 8 - STEP 7



FIGURE 9 - STEP 7

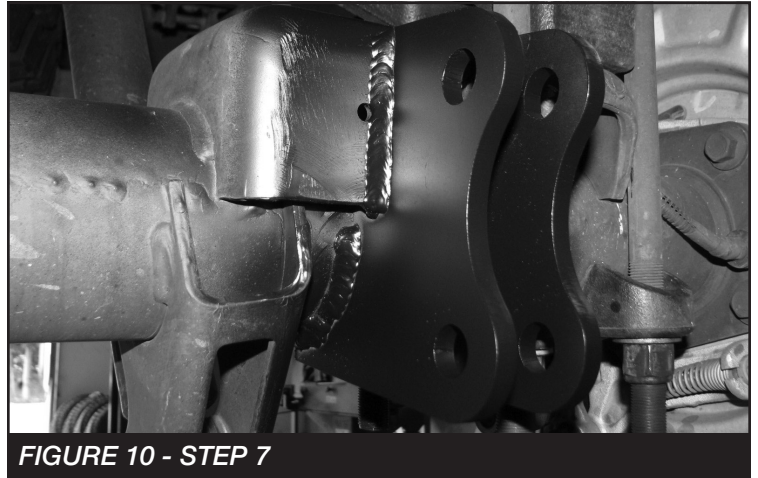


FIGURE 10 - STEP 7

8. Repeat steps 2-7 on passenger side.
9. Reinstall the ubolts and wheels. Set vehicle on level ground. Torque ubolts to 184 ft-lbs
10. Locate FT20741 (Driver Traction Bar), FT95243 (3/4" Rod Ends) and jam nuts. Install the rod ends into the Fabtach traction bar. Pre-set the rear lower rod end so 5/16" thread is left showing and set the front so 3/8" thread is showing. You will adjust the rear upper rod end once install is complete. **SEE FIGURE 11**



FIGURE 11 - STEP 10

11. Install the FT1004 (Bushings) and FT66 (Sleeve) into FT90018 (Shackle). Using the supplied 3/4" x 2-1/2" hardware for the front and 3/4" x 3-1/4" for the rear. Mount the shackle to the front. The shackle needs to be offset so the traction bar is away from the frame. Using the hardware mount the traction bar up to the rear lower portion first. **SEE FIGURE 13**

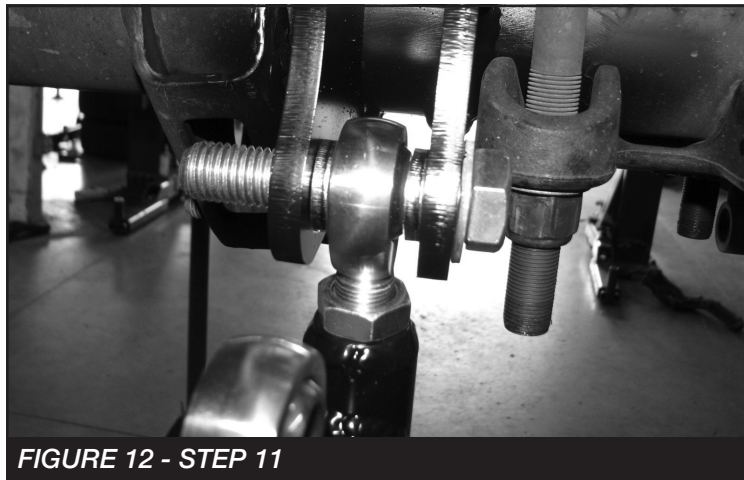


FIGURE 12 - STEP 11

12. Using a center punch, mount FT20760 (Driver front frame mount) to the traction bar and shackle. Swing the bracket up to the frame and mark both holes for drilling. **NOTE: The frame mount and shackle need to be straight up and down prior to marking. SEE FIGURE 13**

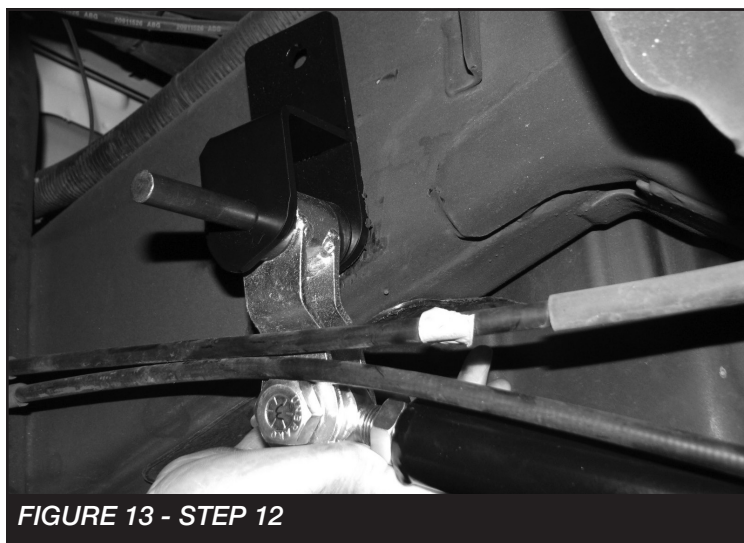


FIGURE 13 - STEP 12

13. Remove and drill out the mark made using a 1/2" drill bit. The hole just in front of the hole drilled will need to be opened up. Grind out approximately 3/4" up and left. **SEE FIGURE 14**

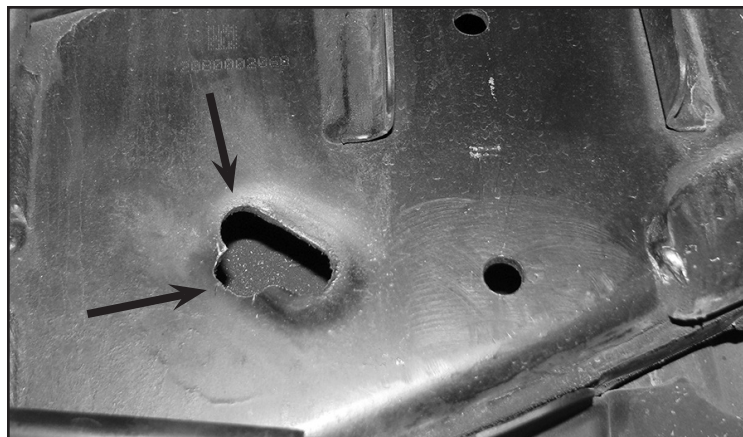


FIGURE 14 - STEP 13

14. Remove the traction bar from the shackle and install the frame bracket using the 1/2" x 1-1/4" hardware and FT20726 (NutTab) for the upper hole and 1/2" x 3-1/2" hardware and FT20727 (NutTab) for the lower mount. Torque to 127 ft-lbs **SEE FIGURE 15**



FIGURE 15 - STEP 14

15. Install the traction bar using the 3/4" x 2-1/2" hardware at the front mount and 3/4" x 3-1/4" hardware and spacer at the rear mount. Adjust the rear upper rod end so the holes line up. Torque to 254 ft-lbs. **SEE FIGURE 16**

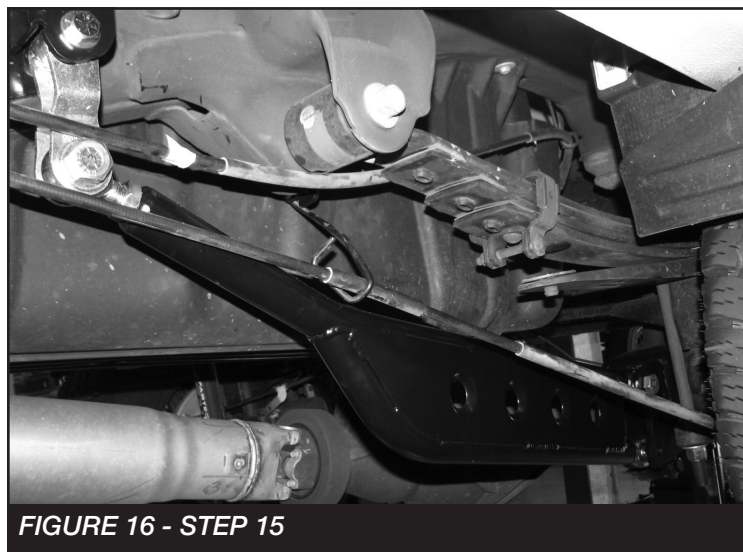


FIGURE 16 - STEP 15

16. Repeat steps 10-15 on the passenger side.

17. Disconnect the E-Brake cable on the driver side. Install the FT20723 (Brake cable bracket) using the factory bolt. Drill a new hole through the frame using a 5/16" drill bit. Install the supplied 5/16" self-tapping bolt. Re-install the brake cable using the supplied 3/8" hardware. Torque to 52 ft-lbs **SEE FIGURES 17-18**



18. Disconnect the brake line from the passenger rear bump stop pad. install FT20729 (Brake line bracket) and brake line using the factory bolt and supplied 5/16" hardware. Torque to 29 ft-lbs. **SEE FIGURE 19**



19. Recheck all bolts for proper torque.

20. Install Driver Warning Decal. Complete product registration card and mail to Fabtech in order to receive future safety and technical bulletins on this suspension.

Vehicles that will receive oversized tires should check ball joints, uniballs and all steering components every 2500-5000 miles for wear and replace as required.

RE-TORQUE ALL NUTS, BOLTS AND LUGS AFTER 50 MILES AND PERIODICALLY THEREAFTER.

For technical assistance call: **909-597-7800**

- Product Warranty and Warnings -

Fabtech provides a Limited Lifetime Warranty to the original retail purchaser who owns the vehicle, on which the product was originally installed, for defects in workmanship and materials.

The Limited Lifetime Warranty excludes the following Fabtech items; bushings, bump stops, ball joints, tie rod ends, limiting straps, cross shafts, heim joints and driveshafts. These parts are subject to wear and are not considered defective when worn. They are warranted for 60 days from the date of purchase for defects in workmanship.

Dirt Logic and Performance Coilover take apart shocks are considered a serviceable shock with a one year warranty on leakage only. Service seal kits are available separately for future maintenance. All other shocks are covered under our Limited Lifetime Warranty.

Fabtech does not warrant any product for finish, alterations, modifications and/or installation contrary to Fabtech's instructions. Alterations to the finish of the parts including but not limited to painting, powder coating, plating and/or welding will void all warranties. Some finish damage may occur to parts during shipping, which is considered normal and is not covered under warranty.

Fabtech products are not designed nor intended to be installed on vehicles used in race applications or for racing purposes or for similar activities. (A "RACE" is defined as any contest between two or more vehicles, or any contest of one or more vehicle against the clock, whether or not such contest is for a prize). This warranty does not include coverage for police or taxi vehicles, race vehicles, or vehicles used for government or commercial purposes. Also excluded from this warranty are sales outside of the United States of America.

Installation of most suspension products will raise the center of gravity of the vehicle and will cause the vehicle to handle differently than stock. It may increase the vehicle's susceptibility to a rollover, on road and off road, at all speeds. Extreme care should be taken to operate the vehicle safely at all times to prevent rollover or loss of control resulting in serious injury or death. Fabtech front end Desert Guards may impair the deployment or operation of vehicles equipped with supplemental restraining systems/air bag systems and should not be installed if the vehicle is equipped as so.

Fabtech makes every effort to ensure suspension product compatibility with all vehicles listed on the website, but due to unknown auto manufacturer's production changes and/or inconsistencies by the auto manufacturer, Fabtech cannot be responsible for 100% compatibility, including the fitment of tire and wheel sizes listed. The Tire and Wheel sizes listed in Fabtech's website are only a guideline for street driving with noted fender trimming. Fabtech is not responsible for damages to the vehicle's body or tires. Fabtech is not responsible for premature wear of factory components due to the installation of oversized tires and wheels.

Fabtech's obligation under this warranty is limited to the repair or replacement, at Fabtech option, of the defective product only. All costs of removal, installation or re-installation, freight charges, incidental or consequential damages are expressly excluded from this warranty. Fabtech is not responsible for damages and/or warranty of other vehicle parts related or non related to the installed Fabtech product. This warranty is expressly in lieu of all other warranties expressed or implied. This warranty shall not apply to any product that has been subject to accident, negligence, alteration, abuse or misuse as determined by Fabtech.

Fabtech suspension components must be installed as a complete system including shocks as shown on our website. All warranties will become void if Fabtech parts are combined and/or substituted with other aftermarket suspension products. Combination and/or substitution of other aftermarket suspension parts may cause premature wear and/or product failure resulting in an accident causing injury or death. Fabtech does not warrant products not manufactured by Fabtech.

Depending on the condition of the factory suspension components retained after the installation of a Fabtech suspension not all vehicles may have the same ride stance front to rear as described in the website. The blue color of suspension components shown in all Fabtech photographs are for display purposes only. Majority of all Fabtech components will be black specifically where noted with part numbers ending in BK.

Installation of Fabtech product may void the vehicles factory warranty; it is the consumer's responsibility to check with their local vehicle's dealer for warranty disposition before the installation of the product. Some state laws may prohibit modification of suspension to a vehicle in whole or in part. It is the responsibility of the installer and consumer to consult local laws prior to the installation of any Fabtech suspension product to comply with such written laws.

It is the responsibility of the distributor and/or the retailer to review all warranties and warnings of Fabtech products with the consumer prior to purchase.

Fabtech reserves the right to super cede, discontinue, change the design, finish, part number and/or application of parts when deemed necessary without written notice. Fabtech is not responsible for misprints or typographical errors within the website or price sheet. For the most recent Product Warranty and Warnings visit our website www.fabtechmotorsports.com