



Installation Instructions

2008-10 FORD 4WD F450/F550 SUPER DUTY FTS22129 6" REAR LIFT SYSTEM

PARTS LIST:

	FTS22129	6" F450/F550 Rear Box
Qty	Part #	Description
2	FTBK4	4" Rear Lift Blocks
4	FT750U	7/8" U-bolts
1	FT30369	Hdwr Sub-Assembly Kit
1	FTS419	S/D 4wd Driveshaft Shim Kit
1	FT30362BK	Drv. Sway Bar Bracket
1	FT30363BK	Pass. Sway Bar Bracket
2	FT30364	Rear Bumpstop Extension

	FT30369	Hardware Sub-Assembly
Qty	Part #	Description
8	FT168	7/8" Heavy Duty Flat Washer
8	FT169	7/8" High Nut
1	FT30365	Rear Brake Line Bracket
2	FT178	Block Pin Sleeve
9	37161251081	3/8"-16 x 1 1/4" Hex Bolt
9	37160003052	3/8"-16 NyLok Nut
18	37000005081	3/8" SAE Flat Washer
4	50000005081	1/2" SAE Flat Washer
2	50130003052	1/2"-13 Nylok Nut
2	50131501081	1/2"-13 x 1 1/2" Hex Bolt
1	FTLOCK	Thread Locking Compound
1	FTREGCARD	Reg. Card
1	FTAS16	Decal
1	FTAS12	Fabtech Sticker

Tool List: (Not Included)

- Floor Jack
- Jack Stands
- Assorted Metric and S.A.E Sockets & Allen Wrenches

READ ALL INSTRUCTIONS THOROUGHLY FROM START TO FINISH BEFORE BEGINNING INSTALLATION!

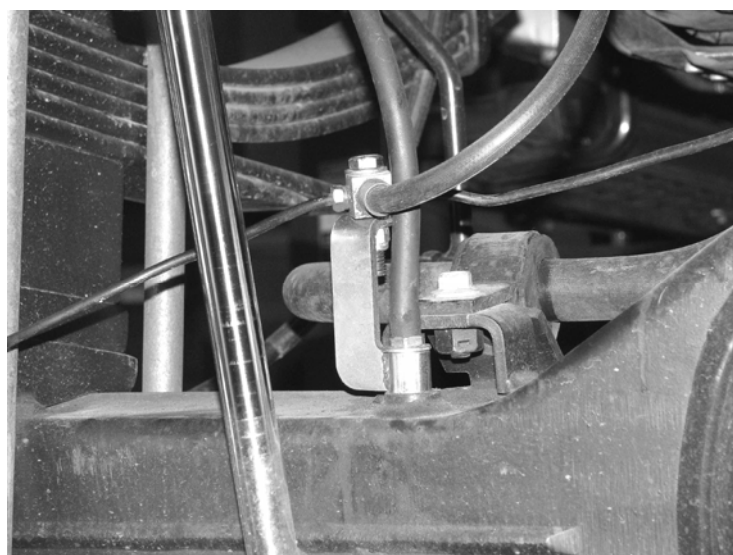
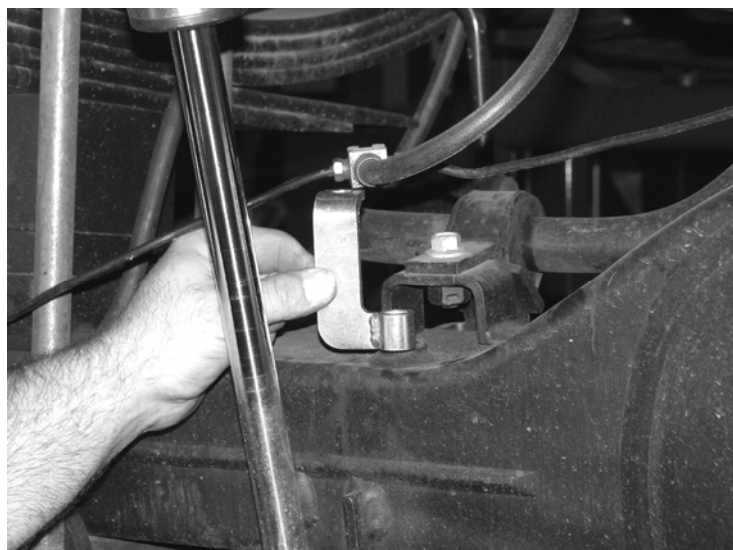
CHECK ALL PARTS INCLUDED IN THIS KIT TO THE PARTS LIST ABOVE BEFORE BEGINNING INSTALLATION OF THIS KIT. IF ANY PIECES ARE MISSING, CONTACT FABTECH AT 909-597-7800

4331 EUCALYPTUS AVE. ~~ CHINO, CA 91710

909-597-7800 Fax 909-597-7185

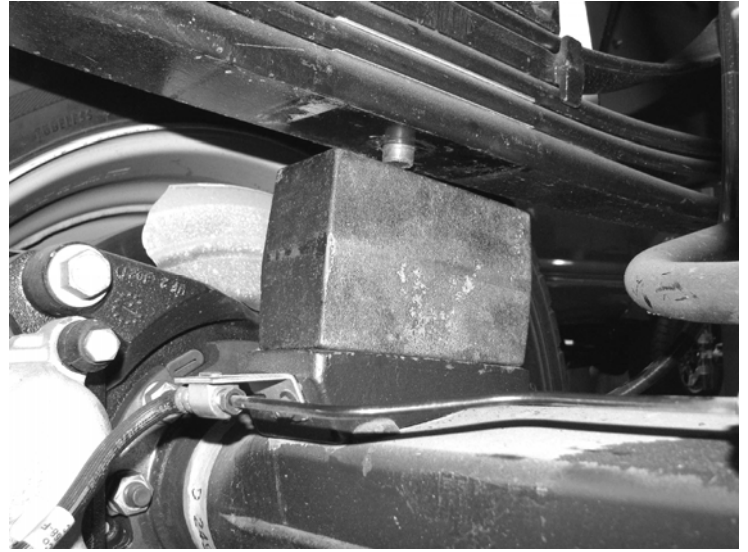
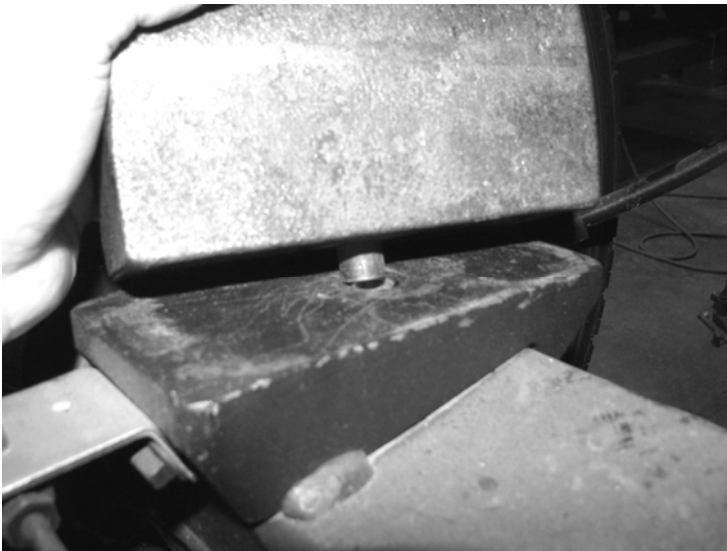
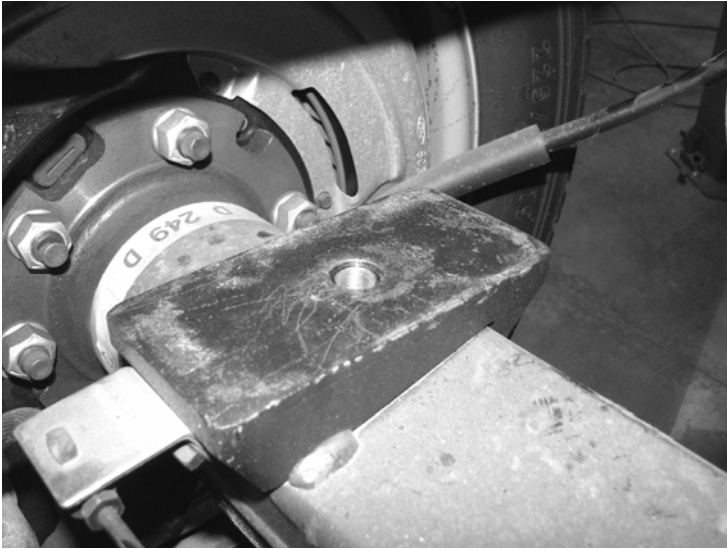
INSTRUCTIONS:

1. Disconnect the negative terminal on the battery. Jack up the rear end of the vehicle and support the frame rails with jack stands. Supporting the rear differential remove and discard the rear shocks and u-bolts. Lower the axle down slowly. Use care not to over extend the brake hose. **NEVER WORK UNDER AN UNSUPPORTED VEHICLE!**
2. Locate and remove the rear brake line distribution block & differential vent hose on the driver side rear axle tube, save hardware. Locate FT30365 Rear Brake Line Bracket and attach to the axle tube with the factory hardware, re-attach the diff vent hose. Attach the block the new bracket with the supplied 3/8" hardware. Torque to ** 52 lbs. SEE PHOTOS BELOW.



3. Locate the supplied rear lift blocks. Drill the hole in the top of the block out to 3/4". Insert the supplied FT178 Block Pin Sleeve into the axle perch. Install the provided lift blocks with the short center pin of the block facing down to the axle. Using the supplied u-bolts, nuts, and washers align axle, lift blocks, and springs and torque to U-Bolts to 296lbs. SEE PHOTOS BELOW.



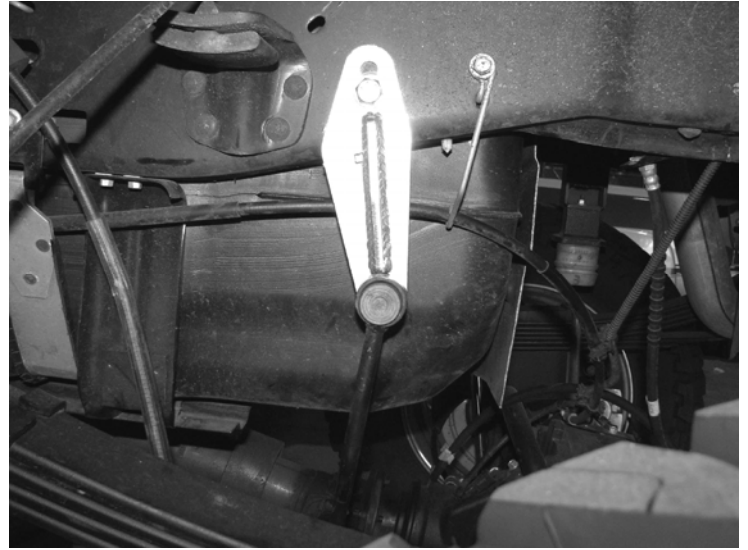
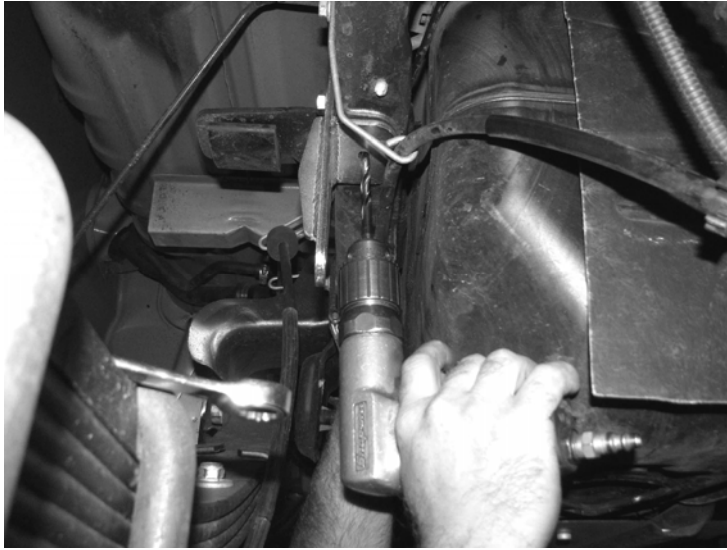


4. Install Fabtech Performance Shocks or Dirt Logic Shocks (not included) with the factory hardware and torque bolts to 65lbs.

COMPLETE STEP FIVE ON MODELS EQUIPPED WITH FACTORY REAR SWAY BAR.

5. Locate the FT30362BK (driver) and FT30363BK (pass) Rear Sway Bar Drop Brackets. Remove the factory sway bar end links from the frame and save the hardware. Place the drop bracket onto the frame so that the hole in the new bracket is aligned with the factory hole (**the shorter end of the bracket goes upward and attaches to the frame**) and attach with the supplied 1/2" hardware, torque to ** 127 ft. lbs. Drill a new 3/8" hole into the bottom of the frame. Use the supplied 3/8" hardware and install the bolts through the bracket into the frame, torque to ** 52ft. lbs. Install the end link into the bottom of the new drop bracket with the factory hardware and torque to ** 50 ft. lbs. SEE PHOTO BELOW.





6. Remove the rear factory bumpstops and save the hardware. Locate FT30364 Rear Bumpstop Extensions and the supplied 3/8" hardware. Attach the factory bumpstop to the new Fabtech extensions with the factory hardware, torque to **52 ft. lbs. Mount the extension to the frame in the factory bumpstop location with the supplied 3/8" hardware, torque to ** 52 ft. lbs. Mark & drill two new 3/8" holes from the extension to the bottom of the frame and attach with the supplied 3/8" hardware, torque to ** 52ft. lbs. SEE PHOTO ON NEXT PAGE.

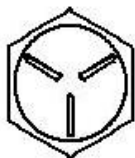


7. Install FTS419 Drive Shaft Shim Kit per the instructions in the FTS419 box.
8. Recheck all bolts for proper torque. Recheck brake hoses and lines for proper clearances.
9. Install tires and wheels and torque lug nuts to wheel manufacturer's specifications. Turn front tires left to right and check for appropriate tire clearance. **Note-** Some oversized tires may require trimming of the bumper & valance.
10. Check front-end alignment and set to factory specifications. Readjust headlights.
11. Check the front-end alignment and set to the factory specifications.

**** USE THE SUPPLIED THREAD-LOCKING COMPOUND ON ALL HARDWARE.**

S.A.E. Bolt Torque Specification Chart

Grade 5



Grade 8



Metric



Standard

Metric

	Grade 5	Grade 8		Grade 8.8	Grade 10.9
SIZE	ft. lbs.	ft. lbs.	SIZE	ft. lbs.	ft. lbs.
1/4"	10	14	M-6	7	12
5/16"	21	29	M-8	17	29
3/8"	37	52	M-10	35	58
7/16"	59	83	M-12	65	100
1/2"	90	127	M-14	100	160
9/16"	129	184	M-16	150	240
5/8"	179	254	M-18	200	300
3/4"	317	450	M-20	300	400

RETORQUE ALL NUTS, BOLTS AND LUGS AFTER 50 MILES AND PERIODICALLY THEREAFTER.

For technical assistance call: 909-597-7800

Product Warranty and Warnings-

Fabtech provides a Limited Lifetime Warranty to the original retail purchaser who owns the vehicle, on which the product was originally installed, for defects in workmanship and materials.

The Limited Lifetime Warranty excludes the following Fabtech items; bushings, bump stops, ball joints, tie rod ends, limiting straps, cross shafts, heim joints. These parts are subject to wear and are not considered defective when worn. They are warranted for 60 days from the date of purchase for defects in workmanship.

Take apart shocks are considered a serviceable shock with a one year warranty on leakage only. Service seal kits are available separately for future maintenance. All other shocks are covered under our Limited Lifetime Warranty.

Fabtech does not warrant any product for finish, alterations, modifications and/or installation contrary to Fabtech's instructions. Alterations to the finish of the parts including but not limited to painting, powdercoating, plating and/or welding will void all warranties. Some finish damage may occur to parts during shipping which is considered normal and is not covered under warranty.

Fabtech products are not designed nor intended to be installed on vehicles used in race applications or for racing purposes or for similar activities. (A "RACE" is defined as any contest between two or more vehicles, or any contest of one or more vehicle against the clock, whether or not such contest is for a prize). This warranty does not include coverage for police or taxi vehicles, race vehicles, or vehicles used for government or commercial purposes. Also excluded from this warranty are sales outside of the United States of America.

Installation of most suspension products will raise the center of gravity of the vehicle and will cause the vehicle to handle differently than stock. It may increase the vehicle's susceptibility to a rollover, on road and off road, at all speeds. Extreme care should be taken to operate the vehicle safely at all times to prevent rollover or loss of control resulting in serious injury or death. Fabtech front end Desert Guards may impair the deployment or operation of vehicles equipped with supplemental restraining systems/air bag systems and should not be installed if the vehicle is equipped as so.

Fabtech makes every effort to ensure suspension product compatibility with all vehicles listed in the catalog, but due to unknown auto manufacturers production changes and/or inconsistencies by the auto manufacturer, Fabtech cannot be responsible for 100% compatibility, including the fitment of tire and wheel sizes listed. The Tire and Wheel sizes listed in Fabtech's catalog are only a guideline for street driving with noted fender trimming. Fabtech is not responsible for damages to the vehicle's body or tires.

Fabtech's obligation under this warranty is limited to the repair or replacement, at Fabtech option, of the defective product only. All costs of removal, installation or re-installation, freight charges, incidental or consequential damages are expressly excluded from this warranty. Fabtech is not responsible for damages and/or warranty of other vehicle parts related or non related to the installed Fabtech product. This warranty is expressly in lieu of all other warranties expressed or implied. This warranty shall not apply to any product that has been subject to accident, negligence, alteration, abuse or misuse as determined by Fabtech.

Fabtech suspension components must be installed as a complete system including shocks as shown in our current catalog. All warranties will become void if Fabtech parts are combined and/or substituted with other aftermarket suspension products. Combination and/or substitution of other aftermarket suspension parts may cause premature wear and/or product failure resulting in an accident causing injury or death. Fabtech does not warrant products not manufactured by Fabtech.

Installation of Fabtech product may void the vehicles factory warranty; it is the consumer's responsibility to check with their local vehicle's dealer for warranty disposition before the installation of the product.

It is the responsibility of the distributor and/or the retailer to review all warranties and warnings of Fabtech products with the consumer prior to purchase.

Fabtech reserves the right to supercede, discontinue, change the design, finish, part number and, or application of parts when deemed necessary without written notice. Fabtech is not responsible for misprints or typographical errors within the catalog or price sheet.

