

## INSTALLATION INSTRUCTIONS

**2017-2024 FORD F-250, F-350, F-450, F-550**

### **DUAL STEERING STABILIZER KIT**

**FTS22301**

**NOTE:** TO ORDER WEARABLE REPLACEMENT COMPONENTS DO NOT USE PART NUMBERS SHOWN ON THIS INSTRUCTION SHEET. GO TO FABTECH WEBSITE AND LOOK UP WEARABLE REPLACEMENT PARTS TO FIND THE PROPER PART NUMBER TO ORDER.

**Fabtech Motorsports** | 2213 Industrial Park Rd. Lancaster, SC 29720

**Tech Line:** 909-597-7800 | **Web:** [www.fabtechmotorsports.com](http://www.fabtechmotorsports.com)

<b>FTS22301 DUAL PERFORMANCE SS - F250 - F350</b>		
2	FT30149	TIE ROD BRACKET
1	FT30887	CENTER BRACKET
1	FT30917	HARDWARE SUBASSEMBLY
2	FT7006	PERFORMANCE STABILIZER

<b>FTS22302 DUAL STEALTH SS - F250 - F350</b>		
2	FT30149	TIE ROD BRACKET
1	FT30887	CENTER BRACKET
1	FT30917	HARDWARE SUBASSEMBLY
2	FTS6604	STEALTH STABILIZER

<b>FT30917 HARDWARE SUBASSEMBLY</b>		
1	FT22301i	INSTRUCTIONS
1	FT30918	HARDWARE KIT
1	FT739U	UBOLT (CENTER BRACKET)
4	FT740U	UBOLT (TIE ROD BRACKET)
1	FTAS12	STICKER FT BLUE 10X4
1	FTAS16	DRIVER WARNING DECAL
1	FTREGCARD	REGISTRATION CARD

<b>FT30918 - HARDWARE KIT</b>		<b>LOCATION</b>
8	3/8" SAE WASHER	
8	3/8-16 NYLOCK NUT	
2	5/8" SAE WASHER	
2	5/8-18 NYLOCK NUT	
2	1/2-13 X 2-3/4" HEX BOLT	
8	1/2 SAE WASHER	
4	1/2-13 NYLOCK NUT	
1	THREAD LOCKING COMPOUND	

## - TOOL LIST -

### *Required Tools (Not Included)*

Basic Hand Tools  
Floor Jack  
Jack Stands  
Assorted Metric and S.A.E sockets, and Allen wrenches  
Torque Wrench

## - PRE-INSTALLATION NOTES -

For technical assistance call: **909-597-7800** or e-mail: **info@fabtechmotorsports.com**

### *READ THIS BEFORE YOU BEGIN INSTALLATION -*

Check all parts to the parts list above before beginning installation. If any parts are missing contact Fabtech at 909-597-7800 and a replacement part will be sent to you immediately.

Read all instructions thoroughly from start to finish before beginning the installation. If these instructions are not properly followed severe frame, driveline and / or suspension damage may occur.

Check your local city and state laws prior to the installation of this system for legality. Do not install if not legal in your area.

Prior to the installation of this suspension system perform a front end alignment and record. Do not install this system if the vehicle alignment is not within factory specifications. Check for frame and suspension damage prior to installation.

The installation of this suspension system should be performed by two professional mechanics.

This suspension must be installed with Fabtech shock absorbers.

Installation of all fasteners requires the use of provided thread locking compound with proper torque values as indicated throughout the installation. Apply thread locking compound upon the final torque of the fastener.

**WARNING-** Installation of this system will alter the center of gravity of the vehicle and may increase roll over as compared to stock.

Vehicles that receive oversized tires should check ball joints, uniballs, tie rods ends, pitman arm and idler arm every 2500-5000 miles for wear and replace as needed.

Verify differential fluid is at manufactures recommended level prior to kit installation. Installation of the kit will reposition the differential and the fill plug hole may be in a different position. (For example, if the manufacture recommends 3 quarts of fluid, make sure the diff has 3 quarts of fluid). Check your specific manual for correct amount of fluid.

### *FOOTNOTES -*

**- Will not fit vehicles equipped with suspension systems less than 4"**

## - INSTRUCTIONS -

1. Park the truck on level ground and set the emergency brake. **NOTE: WHEN INSTALLING ON 2017-UP MODELS, LEAVE FACTORY STABILIZER INSTALLED.**
2. Install FT30887 (Center Bracket) onto the front axle tube using the supplied 5/8" ubolt, 5/8" nuts and washers. The bracket will sit flush against the differential lip and a 1/2" above the center link. Torque to 120 ft-lbs. **SEE FIGURES 1-3**

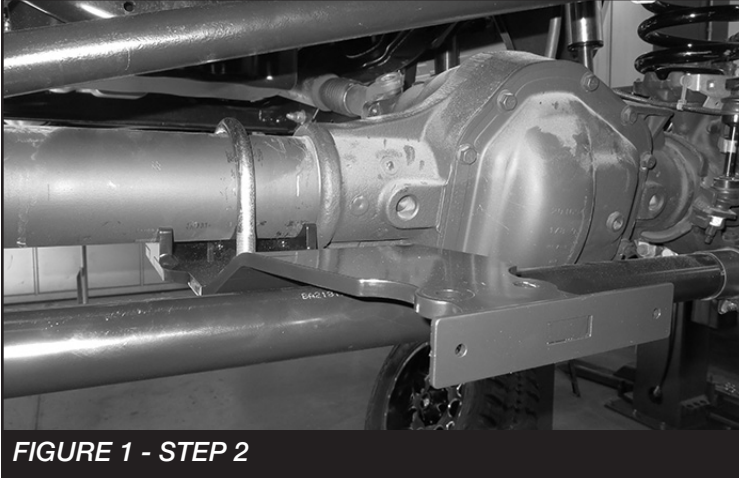


FIGURE 1 - STEP 2

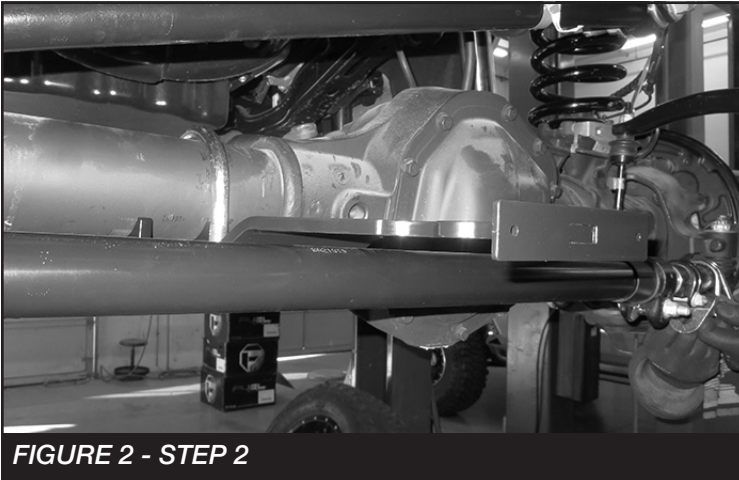


FIGURE 2 - STEP 2



FIGURE 3 - STEP 2

3. Install FT30149 (Tie Rod Bracket) onto both the driver and passenger outer tie rods using the supplied FT470u (Ubolts), 3/8" washers and nuts. The brackets should be installed right at the bend on both tie rod ends. Torque to each ubolt nut to 30 ft-lbs using the criss-cross method. **SEE FIGURES 4-6**

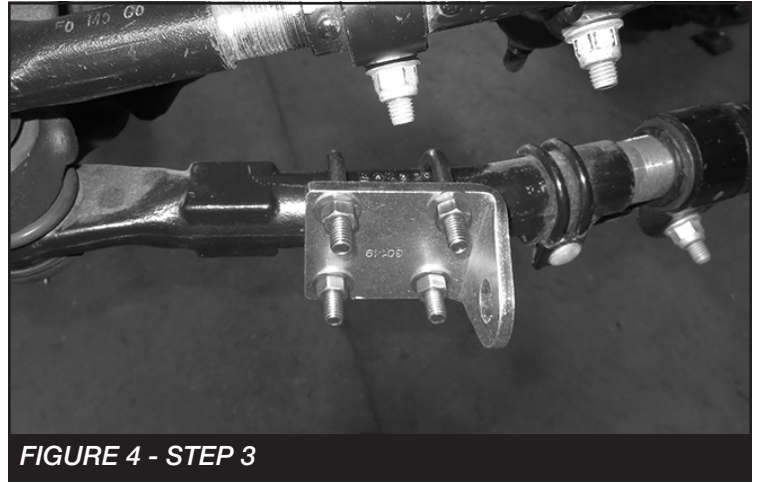


FIGURE 4 - STEP 3



FIGURE 5 - STEP 3

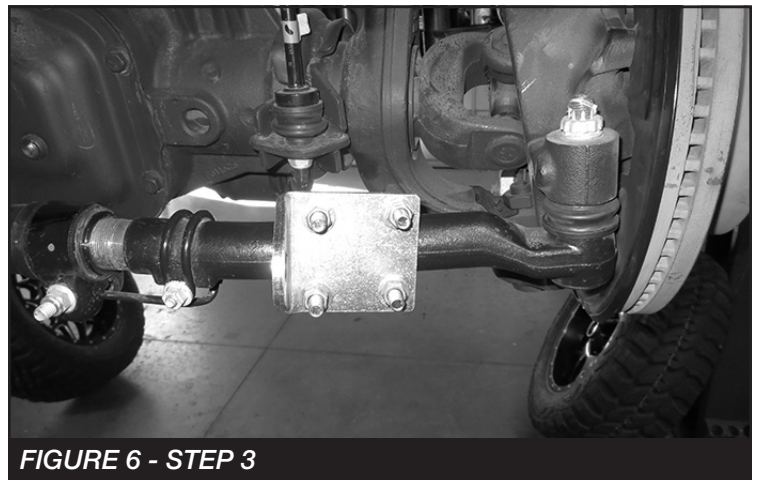
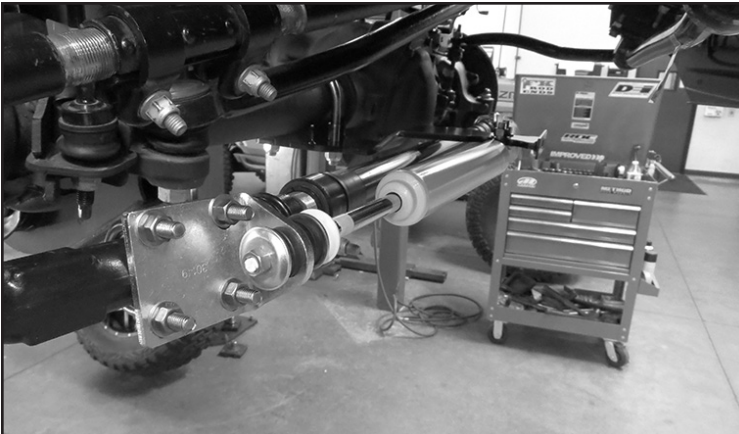


FIGURE 6 - STEP 3

4. Insert the bushings and sleeves as well as half of the stem hardware onto the new stabilizer. Install the new stabilizers to the bottom of the center bracket using the supplied 1/2" X 2-3/4" bolt, washers and nut. Torque the both 1/2" bolts to 65 ft-lbs. Then, install the stem end to the tie rod bracket using the supplied stem hardware. Torque to 29 ft-lbs. **SEE FIGURES 7-8**



**FIGURE 7 - STEP 4**



**FIGURE 8 - STEP 4**

5. Steer the truck fully to the left and right to make sure the steering stabilizers are not bottoming out. Adjust the tie rod end bracket(s) as needed.
6. Re-torque all hardware after 200 miles.
7. Install Driver Warning Decal. Complete product registration card and mail to Fabtech in order to receive future safety and technical bulletins on this suspension.

**Vehicles that will receive oversized tires should check ball joints, uniballs and all steering components every 2500-5000 miles for wear and replace as required.**

**RETORQUE ALL NUTS, BOLTS AND LUGS  
AFTER 50 MILES AND PERIODICALLY  
THEREAFTER.**

For technical assistance call: **909-597-7800**

## - Product Warranty and Warnings -

Fabtech provides a Limited Lifetime Warranty to the original retail purchaser who owns the vehicle, on which the product was originally installed, for defects in workmanship and materials.

The Limited Lifetime Warranty excludes the following Fabtech items; bushings, bump stops, ball joints, tie rod ends, limiting straps, cross shafts, heim joints and driveshafts. These parts are subject to wear and are not considered defective when worn. They are warranted for 60 days from the date of purchase for defects in workmanship.

Dirt Logic and Performance Coilover take apart shocks are considered a serviceable shock with a one year warranty on leakage only. Service seal kits are available separately for future maintenance. All other shocks are covered under our Limited Lifetime Warranty.

Fabtech does not warrant any product for finish, alterations, modifications and/or installation contrary to Fabtech's instructions. Alterations to the finish of the parts including but not limited to painting, powder coating, plating and/or welding will void all warranties. Some finish damage may occur to parts during shipping, which is considered normal and is not covered under warranty.

Fabtech products are not designed nor intended to be installed on vehicles used in race applications or for racing purposes or for similar activities. (A "RACE" is defined as any contest between two or more vehicles, or any contest of one or more vehicle against the clock, whether or not such contest is for a prize). This warranty does not include coverage for police or taxi vehicles, race vehicles, or vehicles used for government or commercial purposes. Also excluded from this warranty are sales outside of the United States of America.

Installation of most suspension products will raise the center of gravity of the vehicle and will cause the vehicle to handle differently than stock. It may increase the vehicle's susceptibility to a rollover, on road and off road, at all speeds. Extreme care should be taken to operate the vehicle safely at all times to prevent rollover or loss of control resulting in serious injury or death. Fabtech front end Desert Guards may impair the deployment or operation of vehicles equipped with supplemental restraining systems/air bag systems and should not be installed if the vehicle is equipped as so.

Fabtech makes every effort to ensure suspension product compatibility with all vehicles listed on the website, but due to unknown auto manufacturer's production changes and/or inconsistencies by the auto manufacturer, Fabtech cannot be responsible for 100% compatibility, including the fitment of tire and wheel sizes listed. The Tire and Wheel sizes listed in Fabtech's website are only a guideline for street driving with noted fender trimming. Fabtech is not responsible for damages to the vehicle's body or tires. Fabtech is not responsible for premature wear of factory components due to the installation of oversized tires and wheels.

Fabtech's obligation under this warranty is limited to the repair or replacement, at Fabtech option, of the defective product only. All costs of removal, installation or re-installation, freight charges, incidental or consequential damages are expressly excluded from this warranty. Fabtech is not responsible for damages and/or warranty of other vehicle parts related or non related to the installed Fabtech product. This warranty is expressly in lieu of all other warranties expressed or implied. This warranty shall not apply to any product that has been subject to accident, negligence, alteration, abuse or misuse as determined by Fabtech.

Fabtech suspension components must be installed as a complete system including shocks as shown on our website. All warranties will become void if Fabtech parts are combined and/or substituted with other aftermarket suspension products. Combination and/or substitution of other aftermarket suspension parts may cause premature wear and/or product failure resulting in an accident causing injury or death. Fabtech does not warrant products not manufactured by Fabtech.

Depending on the condition of the factory suspension components retained after the installation of a Fabtech suspension not all vehicles may have the same ride stance front to rear as described in the website. The blue color of suspension components shown in all Fabtech photographs are for display purposes only. Majority of all Fabtech components will be black specifically where noted with part numbers ending in BK.

Installation of Fabtech product may void the vehicles factory warranty; it is the consumer's responsibility to check with their local vehicle's dealer for warranty disposition before the installation of the product. Some state laws may prohibit modification of suspension to a vehicle in whole or in part. It is the responsibility of the installer and consumer to consult local laws prior to the installation of any Fabtech suspension product to comply with such written laws.

It is the responsibility of the distributor and/or the retailer to review all warranties and warnings of Fabtech products with the consumer prior to purchase.

Fabtech reserves the right to super cede, discontinue, change the design, finish, part number and/or application of parts when deemed necessary without written notice. Fabtech is not responsible for misprints or typographical errors within the website or price sheet. For the most recent Product Warranty and Warnings visit our website [www.fabtechmotorsports.com](http://www.fabtechmotorsports.com)