

INSTALLATION INSTRUCTIONS

FTS22387 3/4" BUMPER SPACER KIT		
4	FT31130	BUMPER SPACER (LARGE)
2	FT31131	BUMPER SPACER (SMALL)
1	FT31132	HARDWARE KIT
1	FT22387i	INSTRUCTIONS

FT31132 - HARDWARE KIT		LOCATION
4	M10-1.5 X 50MM HEX BOLT	
4	M10 WASHER FLAT	
4	M10 SPLIT LOCK WASHER	
8	M10 INTERNAL TOOTH WASHER	
8	M12-1.75 X 50MM HEX BOLT	
8	M12 WASHER FLAT	
8	M12 SPLIT LOCK WASHER	
8	M12 INTERNAL TOOTH WASHER	

2017-2024 FORD SUPER DUTY 3/4" BUMPER SPACER KIT FTS22387

NOTE: TO ORDER WEARABLE REPLACEMENT COMPONENTS DO NOT USE PART NUMBERS SHOWN ON THIS INSTRUCTION SHEET. GO TO FABTECH WEBSITE AND LOOK UP WEARABLE REPLACEMENT PARTS TO FIND THE PROPER PART NUMBER TO ORDER.

Fabtech Motorsports | 2213 Industrial Park Rd. Lancaster, SC 29720

Tech Line: 909-597-7800 | **Web:** www.fabtechmotorsports.com

- TOOL LIST -

Required Tools (Not Included)

Basic Hand Tools
Assorted Metric and S.A.E sockets, and Allen wrenches
Torque Wrench

- PRE-INSTALLATION NOTES -

For technical assistance call: **909-597-7800** or e-mail: **info@fabtechmotorsports.com**

READ THIS BEFORE YOU BEGIN INSTALLATION -

Check all parts to the parts list above before beginning installation. If any parts are missing contact Fabtech at 909-597-7800 and a replacement part will be sent to you immediately.

This suspension and shocks have been designed to be installed on a stock vehicle.

Read all instructions thoroughly from start to finish before beginning the installation. If these instructions are not properly followed severe frame, driveline and / or suspension damage may occur.

Check your local city and state laws prior to the installation of this system for legality. Do not install if not legal in your area.

Prior to the installation of this suspension system perform a front end alignment and record. Do not install this system if the vehicle alignment is not within factory specifications. Check for frame and suspension damage prior to installation.

The installation of this suspension system should be performed by two professional mechanics. This suspension must be installed with Fabtech shock absorbers.

Installation of all fasteners requires the use of provided thread locking compound with proper torque values as indicated throughout the installation. Apply thread locking compound upon the final torque of the fastener.

WARNING- Installation of this system will alter the center of gravity of the vehicle and may increase roll over as compared to stock. Extreme care should be taken to operate the vehicle safely at all times to prevent rollover or loss of control resulting in serious injury or death.

Vehicles that receive oversized tires should check ball joints, uniballs, tie rods ends, pitman arm and idler arm every 2500-5000 miles for wear and replace as needed.

Verify differential fluid is at manufactures recommended level prior to kit installation. Installation of the kit will reposition the differential and the fill plug hole may be in a different position. (For example, if the manufacture recommends 3 quarts of fluid, make sure the diff has 3 quarts of fluid). Check your specific manual for correct amount of fluid.

Read all warnings and warranties on the last page of these instructions before starting installation.

FOOTNOTES -

-

- INSTRUCTIONS -

1. Before removing the bumper, make note of how the bumper sits on the truck, and the gap below the headlights so you can match the alignment when re-installing the bumper.
2. Release the two tabs per plastic cover that hide the bolts by the front tow hooks and remove. **SEE FIGURE 1**

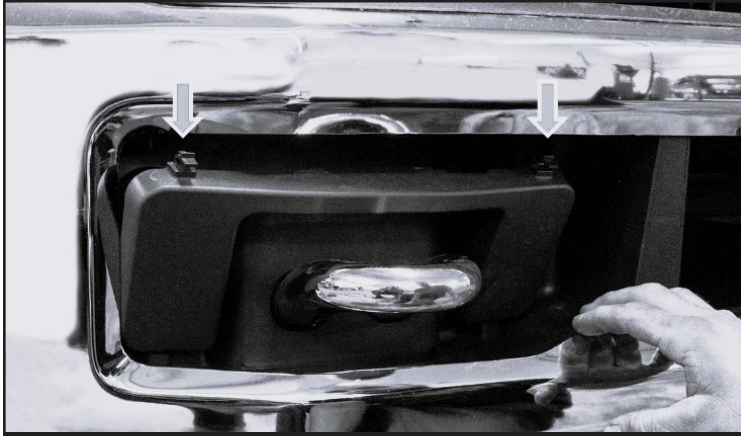


FIGURE 1 - STEP 2

3. If the truck is equipped with factory fog lights, unplug the fog light wiring harness from the vehicle wiring harness towards the bottom of the drivers side frame near the radiator.
4. If the truck is equipped with a block heater, unplug the bumper side harness on the top of the frame on the passenger side just behind the bumper.
5. In the wheel well, remove the two bolts per side that hold the bumper support bracket to the frame. **SEE FIGURE 2**

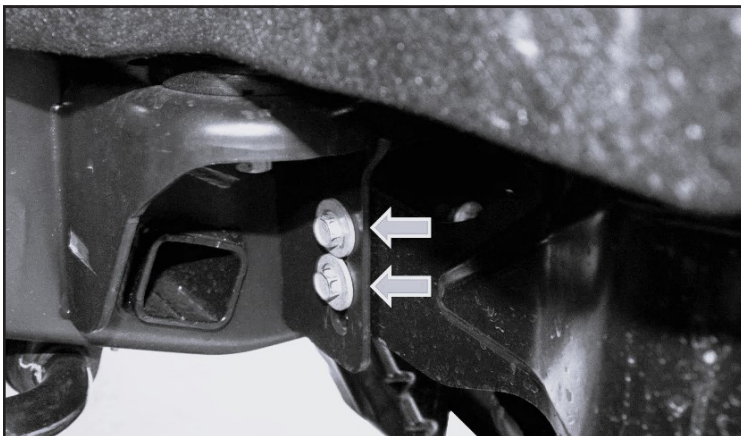


FIGURE 2 - STEP 5

6. Remove the four bolts per side on the front face of the bumper. When removing the bolts, take one out at a time and thread it back into the nut plate while you unbolt the rest. **SEE FIGURE 3**

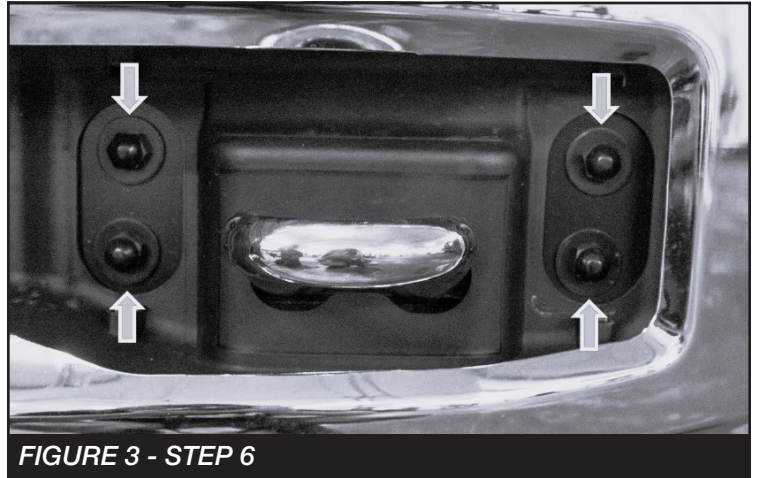


FIGURE 3 - STEP 6

7. Once all bolts are removed, carefully remove the bumper from the front of the truck.
8. Insert the supplied M12 bolt, lock washer and flat washer through the front of the bumper. Next, install the new large block spacer followed by the M12 internal tooth retaining washer. Do this for all mounting bolts. **SEE FIGURES 4-5**

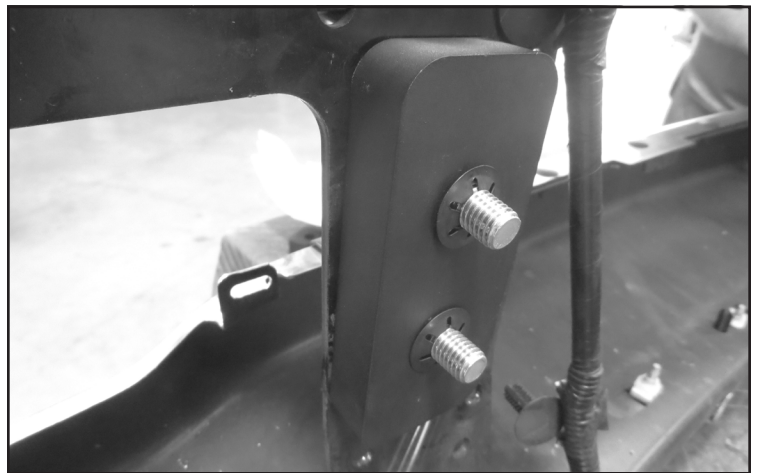


FIGURE 4 - STEP 8

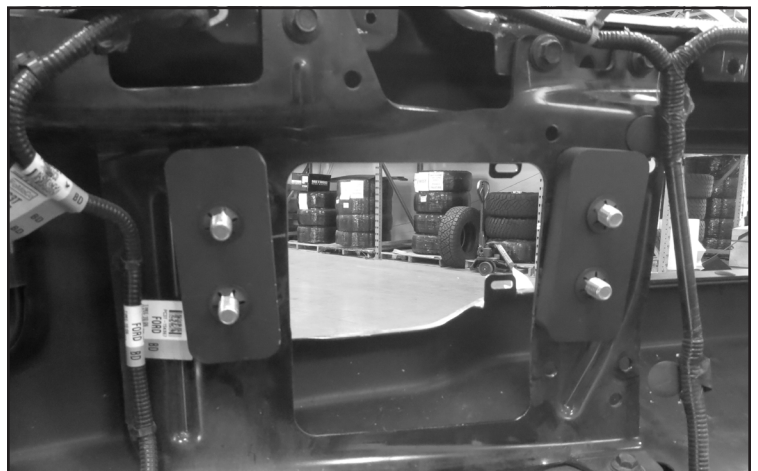


FIGURE 5 - STEP 8

9. With the large spacers secured to the back side of the bumper, reinstall the bumper back onto the truck. Lining up the new bolts to the holes on the frame. Use the factory nut plates to keep the bumper secured. Leave loose.
10. Install the small spacers between the frame bracket and the bumper bracket. Secure the spacers using the supplied M10 bolts, lock washers and flat washers. Leave loose. **SEE FIGURE 6**



FIGURE 6 - STEP 10

11. Using the measurements you took in step one. Adjust the bumper to where it previously sat and tighten the bolts. Torque the M12 to 140 ft-lbs and the M10 to 80 ft-lbs.

For technical assistance call: **909-597-7800**

- Product Warranty & Warnings -

Fabtech provides a Limited Lifetime Warranty to the original retail purchaser who owns the vehicle, on which the product was originally installed, for defects in workmanship and materials.

The Limited Lifetime Warranty excludes the following Fabtech items; bushings, bump stops, ball joints, Uniball bearings, tie rod ends, limiting straps, cross shafts, heim joints and driveshafts. These parts are subject to wear and are not considered defective when worn. They are warranted for 60 days from the date of purchase for defects in workmanship.

Dirt Logic take apart shocks are considered a serviceable shock with a 1-year warranty against any manufacturer's defects. If a shock fails within the initial year of ownership, the owner must ship the shock to Fabtech for inspection and service. If after examination the shock is determined to have failed due to neglect, damage caused by improper installation, or any reason other than "normal wear and tear," the owner of the shock will be responsible for all service costs. Costs include labor, parts, and shipping. Service seal kits are available separately for future maintenance. All other shocks are covered under our Limited Lifetime Warranty.

Fabtech does not warrant any product for finish, alterations, modifications and/or installation contrary to Fabtech's instructions. Alterations to the finish of the parts including but not limited to painting, powder coating, plating and/or welding will void all warranties. Some finish damage may occur to parts during shipping, which is considered normal and is not covered under warranty.

Fabtech products are not designed nor intended to be installed on vehicles used in race applications or for racing purposes or for similar activities. This warranty does not include coverage for police, taxi, first responder vehicles, race vehicles, or vehicles used for government, commercial or fleet purposes. Also excluded from this warranty are sales outside of the United States of America.

Installation of most suspension products will raise the center of gravity of the vehicle and will cause the vehicle to handle differently than stock. It may increase the vehicle's susceptibility to a rollover, on road and off road, at all speeds. Extreme care should be taken to operate the vehicle safely at all times to prevent rollover or loss of control resulting in serious injury or death.

Oversized tires and wheels may decrease the vehicle's braking capacity. Drivers should always brake early and be aware of the increased the stopping distance of the vehicle. Drivers should adjust their driving habits to the effectiveness of the braking. Adjust your driving habits to these changes.

Failure to drive safely may result in serious injury or death to driver and passengers. Driver and passengers must ALWAYS wear your seat belts, avoid quick sharp turns and other sudden maneuvers