



[www.fabtechmotorsports.com](http://www.fabtechmotorsports.com)

**4331 EUCALYPTUS AVE. CHINO, CA. 91710**

**PHONE 909-597-7800 FAX 909-597-7185**

**FTS23011**

**Dual Steering Stabilizer System**

**2006 Dodge Ram 1500 4WD**

**WILL NOT FIT TRUCKS WITH ESP SYSTEM**

**WILL WORK WITH OLD STYLE SPINDLE FTS44010D/P**

**PARTS LIST:**

**HARDWARE LIST:**

Qty	Part #	Description
2	FT8025	Stabilizer
1	FT44080	Center Bracket
1	FT44081BK	Tie Rod Bracket Driver
1	FT44082BK	Tie Rod Bracket Pass
4	FTS31UBK	U-Bolt Kit
2	FT44084	Sway Bar Spacer Plate
1	FT44085	Hardware Kit
2	FT23011i	Instruction Sheet

Qty	Description	Location
1	1/2"-13 x 1 1/2" Hex Cap Bolt	Center Bracket @ Frame
1	1/2"-13 C-Lock Nut	
2	1/2" SAE Flat Washer	
2	1/4"-20 x 1" Hex Cap Bolt	
2	1/4"-20 C-Lock Nut	
4	1/4" SAE Flat Washer	
2	1/2"-13 C-Lock Nut	Stabilizers @ Center Brkt.
2	1/2" SAE Flat Washer	
2	1/2"-13 x 2 1/2" Hex Cap Bolt	Stabilizers @ Tie Rod Brkts.
2	1/2"-13 C-Lock Nut	
4	1/2" SAE Flat Washer	
4	10mmx1.50 x 40mm Hex Bolt	Sway Bar Spacer Plate
4	10mmx1.50 Flat Washer	
1	FTLock	Thread Locking Compound

**Tool List: (Not Included)**

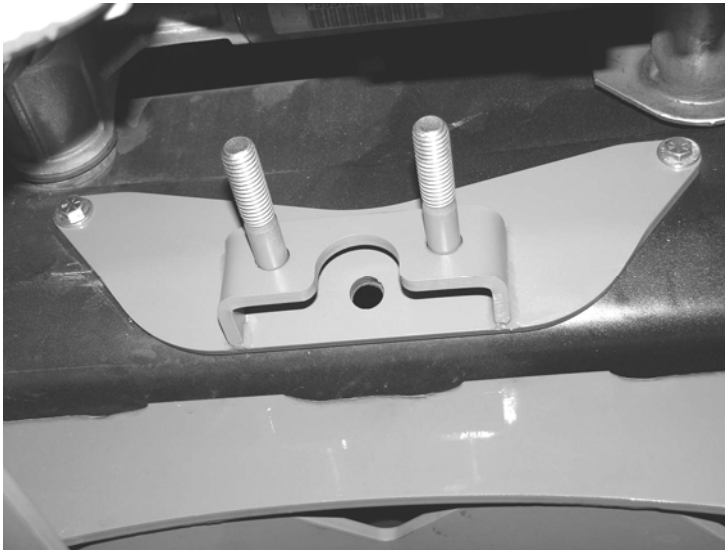
- Assorted Metric and S.A.E Sockets & Box Wrenches
- Drill w/ Assorted Drill Bits
- Measuring Tape
- Paint Pen or Marker

**READ ALL INSTRUCTIONS THOROUGHLY FROM START TO FINISH BEFORE BEGINNING INSTALLATION!**

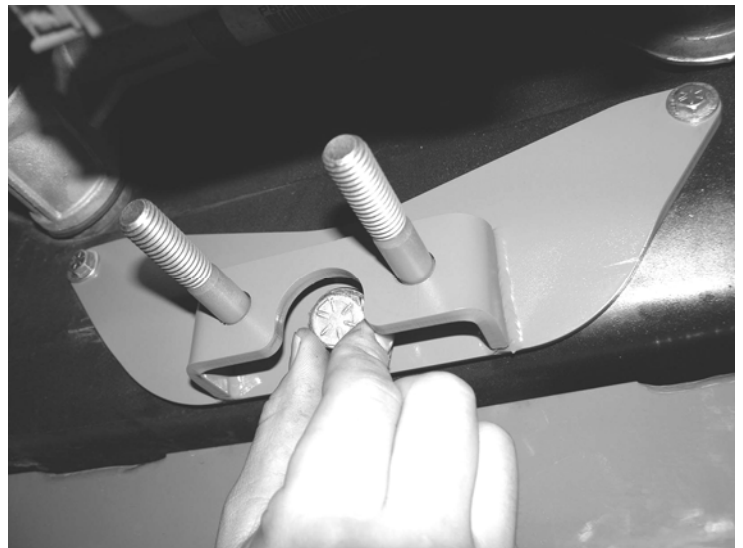
**CHECK ALL PARTS INCLUDED IN THIS KIT TO THE PARTS LIST ABOVE BEFORE BEGINNING INSTALLATION OF THIS KIT. IF ANY PIECES ARE MISSING, CONTACT FABTECH AT 909-597-7800.**

## **INSTRUCTIONS:**

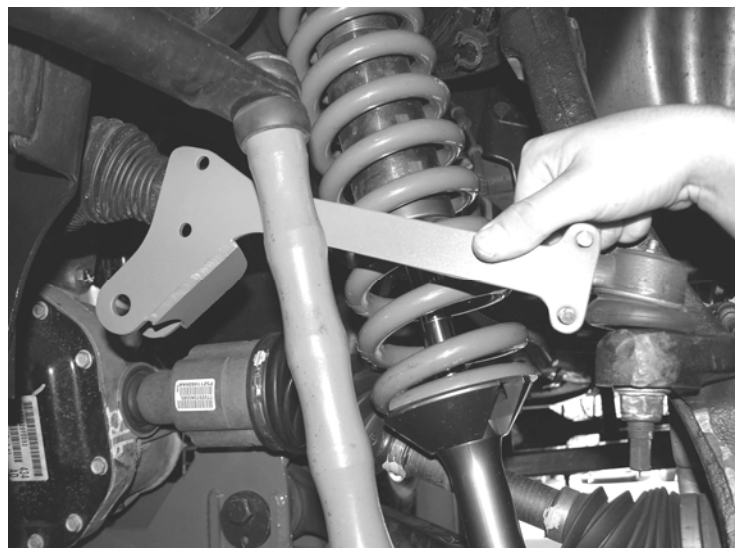
1. Disconnect the negative terminal on the battery. Park the truck on level ground and set the emergency brake. Jack up the front end of the truck and support the frame at the front frame rails with jack stands. **NEVER WORK UNDER AN UNSUPPORTED VEHICLE.** Remove the front tires.
2. Locate FT44080 Center Bracket and supplied  $\frac{1}{4}$ " hardware. Place the bracket on the frame and position them to the factory  $\frac{1}{4}$ " holes in the frame. Attach with the  $\frac{1}{4}$ " hardware. Torque to 10 ft. lbs. SEE PHOTOS BELOW.

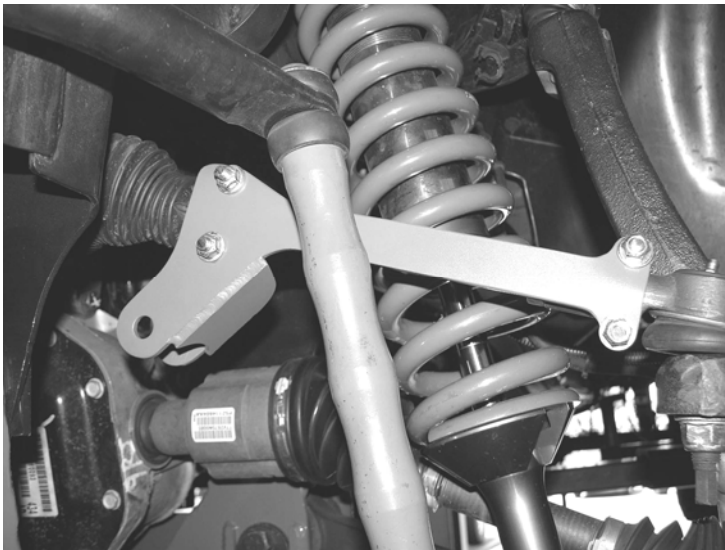
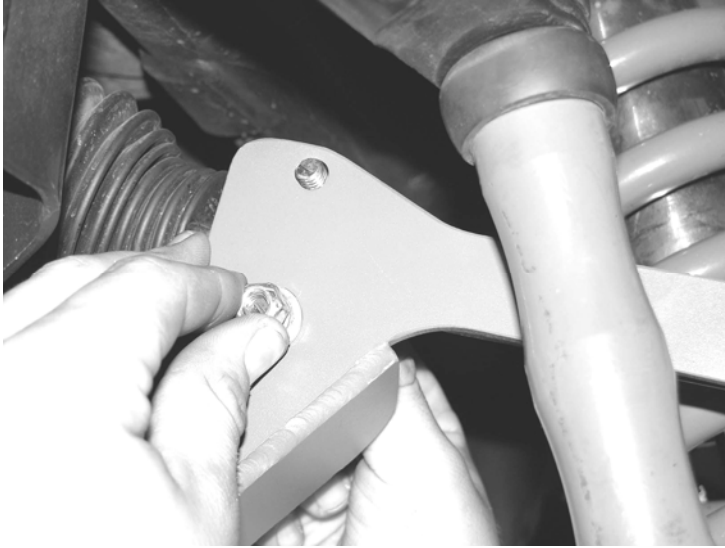


3. Use a drill with a  $\frac{1}{2}$ " drill bit and drill out the center hole of the bracket into the crossmember of the truck. Use the supplied  $\frac{1}{2}$ " x  $1\frac{1}{2}$ " bolt and hardware to attach to the crossmember. Torque to 75 ft. lbs. SEE PHOTOS IN NEXT COLUMN.



4. Working from the driver's side, locate FT44081 Tie Rod Bracket and two of the supplied FTS31 U-Bolt kits. Place the bracket onto the tie rod and position it so that the bracket is on the front of the tie rod (make sure that the bracket does not contact the rubber boot on the tie rod or the rack). Install the U-Bolt kit on the bottom of the bracket first, then the top. Evenly tighten and torque the U-Bolt nuts to 15 ft. lbs. SEE PHOTOS BELOW AND ON NEXT PAGE.



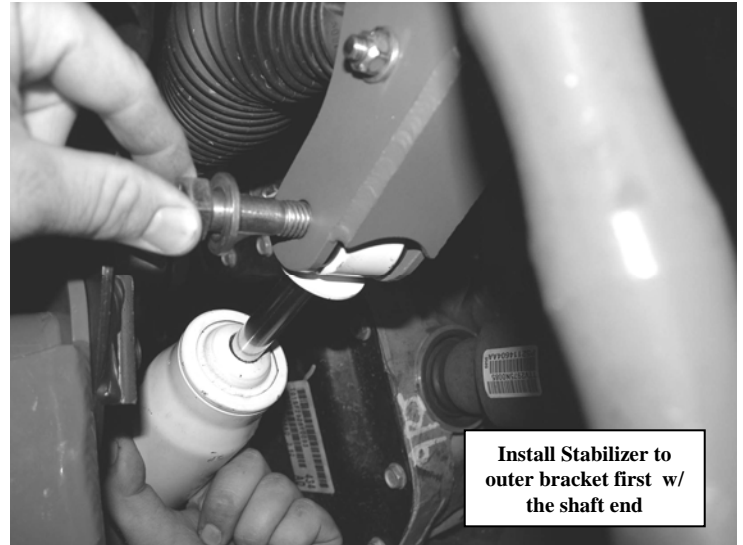


5. Use a die grinder with a cut-off wheel and cut the excess part of the U-Bolt that protrudes past the nut. Use care not to cut into the nut itself. SEE PHOTO BELOW.

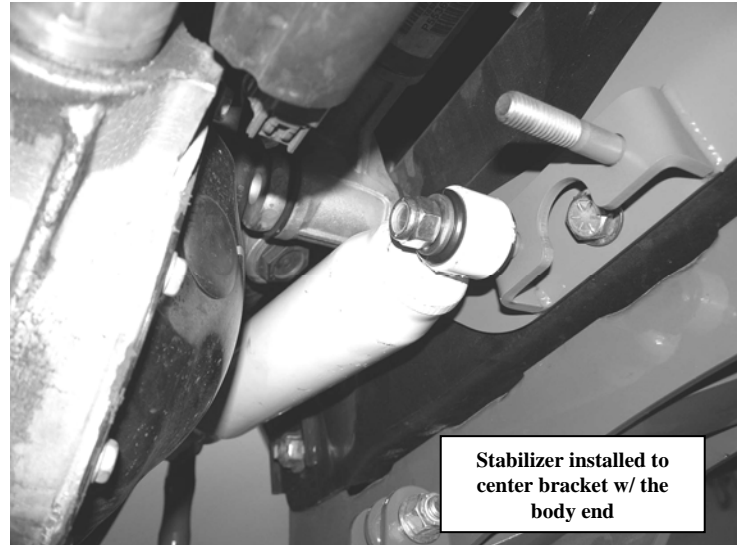


6. Repeat step four and five on the passenger side.
7. Locate the supplied FT8025 Steering Stabilizers and supplied shock sleeves. Press one sleeve into each stabilizer. Use the

supplied 1/2" x 2 1/2" bolts and hardware and attach the shaft end of the stabilizer to the tie rod bracket. Then attach the body end of the stabilizer to the center frame bracket. Torque the bolts to 50 ft. lbs. SEE PHOTOS BELOW.

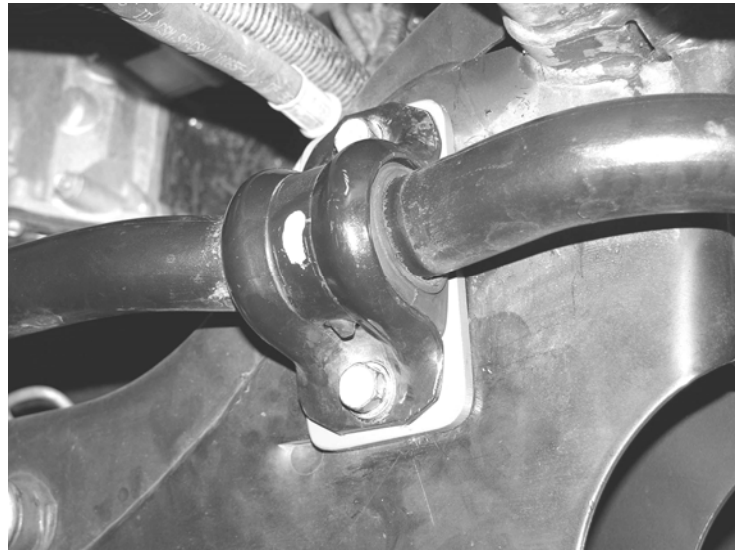


Driver's Side Shown



Driver's Side Shown

8. Remove the factory sway bar frame mount hardware and discard. Locate FT44084 Sway Bar Spacer Plates and supplied 10mm bolts and washers. Place the spacer between the sway bar mount and the frame. Use the new 10mm bolts and re-attach the sway bar mounts to the frame and torque to 15 ft. lbs. SEE PHOTOS ON NEXT PAGE.



9. Put the front tires back onto the truck and fully torque the lugs. Factory lug nut torque specification can be found in your owner's manual.
10. Steer the truck fully to the left and right to make sure the steering stabilizers are not bottoming out. Adjust the tie rod end bracket as needed. Check the clearance of the stabilizers and tie rod brackets for proper clearance.
11. Re-torque all the hardware after 200 miles.

**RETORQUE ALL NUTS, BOLTS AND LUGS AFTER 50 MILES AND PERIODICALLY THEREAFTER**  
For technical assistance call: 909-597-7800

## Product Warranty and Warnings-

Fabtech provides a Limited Lifetime Warranty to the original retail purchaser who owns the vehicle, on which the product was originally installed, for defects in workmanship and materials.

The Limited Lifetime Warranty excludes the following Fabtech items; bushings, bump stops, ball joints, tie rod ends, limiting straps, cross shafts, heim joints. These parts are subject to wear and are not considered defective when worn. They are warranted for 60 days from the date of purchase for defects in workmanship.

Take apart shocks are considered a serviceable shock with a one year warranty on leakage only. Service seal kits are available separately for future maintenance. All other shocks are covered under our Limited Lifetime Warranty.

Fabtech does not warrant any product for finish, alterations, modifications and/or installation contrary to Fabtech's instructions. Alterations to the finish of the parts including but not limited to painting, powdercoating, plating and/or welding will void all warranties. Some finish damage may occur to parts during shipping which is considered normal and is not covered under warranty.

Fabtech products are not designed nor intended to be installed on vehicles used in race applications or for racing purposes or for similar activities. (A "RACE" is defined as any contest between two or more vehicles, or any contest of one or more vehicle against the clock, whether or not such contest is for a prize). This warranty does not include coverage for police or taxi vehicles, race vehicles, or vehicles used for government or commercial purposes. Also excluded from this warranty are sales outside of the United States of America.

Installation of most suspension products will raise the center of gravity of the vehicle and will cause the vehicle to handle differently than stock. It may increase the vehicle's susceptibility to a rollover, on road and off road, at all speeds. Extreme care should be taken to operate the vehicle safely at all times to prevent rollover or loss of control resulting in serious injury or death. Fabtech front end Desert Guards may impair the deployment or operation of vehicles equipped with supplemental restraining systems/air bag systems and should not be installed if the vehicle is equipped as so.

Fabtech makes every effort to ensure suspension product compatibility with all vehicles listed in the catalog, but due to unknown auto manufacturers production changes and/or inconsistencies by the auto manufacturer, Fabtech cannot be responsible for 100% compatibility, including the fitment of tire and wheel sizes listed. The Tire and Wheel sizes listed in Fabtech's catalog are only a guideline for street driving with noted fender trimming. Fabtech is not responsible for damages to the vehicle's body or tires.

Fabtech's obligation under this warranty is limited to the repair or replacement, at Fabtech option, of the defective product only. All costs of removal, installation or re-installation, freight charges, incidental or consequential damages are expressly excluded from this warranty. Fabtech is not responsible for damages and/or warranty of other vehicle parts related or non related to the installed Fabtech product. This warranty is expressly in lieu of all other warranties expressed or implied. This warranty shall not apply to any product that has been subject to accident, negligence, alteration, abuse or misuse as determined by Fabtech.

Fabtech suspension components must be installed as a complete system including shocks as shown in our current catalog. All warranties will become void if Fabtech parts are combined and/or substituted with other aftermarket suspension products. Combination and/or substitution of other aftermarket suspension parts may cause premature wear and/or product failure resulting in an accident causing injury or death. Fabtech does not warrant products not manufactured by Fabtech.

Installation of Fabtech product may void the vehicles factory warranty; it is the consumer's responsibility to check with their local vehicle's dealer for warranty disposition before the installation of the product.

It is the responsibility of the distributor and/or the retailer to review all warranties and warnings of Fabtech products with the consumer prior to purchase.

Fabtech reserves the right to supercede, discontinue, change the design, finish, part number and, or application of parts when deemed necessary without written notice. Fabtech is not responsible for misprints or typographical errors within the catalog or price sheet.