



Installation Instructions



6" LONG ARM LIFT SYSTEM

2003 – 2008 DODGE RAM 2500 & 3500 4WD

2006 – 2008 2500 MEGA CAB 4WD

Fabtech Motorsports
4331 Eucalyptus Ave., Chino, CA 91710
Tech Line 909-597-7800 Fax 909-597-7185 www.fabtechmotorsports.com



6" LONG ARM LIFT SYSTEM
2003 – 2008 DODGE RAM 2500 & 3500 4WD
2006 – 2008 2500 MEGA CAB 4WD

FTS23025			FT44160		
6" Ram 2500/3500 Long Arm Box 1			Hardware Sub-Assembly		
Qty	Part Number	Description	Qty	Part Number	Description
2	FT44148BK	Front Upper Link Arm	1	FT44152	Nut Tab (Drv. Side Small)
2	FT44149BK	Front Lower Link Arm	1	FT44153	Nut Tab (Pass. Side Small)
			2	FT44154	Nut Tab (large)
			1	FT44157	Nut Tab (Drv. Side)
			1	FT44158	Nut Tab (Pass. Side)
			2	FT44135	Nut Tab
			2	FT76	Sleeve
			2	FT77	Sleeve
			6	FT177	Frame Sleeve
			4	FT1037	Link Bushing
			4	FT1038	Link Bushing
			8	FTS43	3/4" Mis-Alignment
FTS23026					
6" Ram 2500/3500 Long Arm Box 2					
Qty	Part Number	Description			
1	FT44184BK	Link Arm Pocket Drv.			
1	FT44185BK	Link Arm Pocket Pass			



6" LONG ARM LIFT SYSTEM
2003 – 2008 DODGE RAM 2500 & 3500 4WD
2006 – 2008 2500 MEGA CAB 4WD

	FT44159 Hardware Kit -	
Qua	Description	Location
4	7/16" – 14 X 1" Hex Bolt	Swy Bar Drop Brkt.
4	7/16" - 14 C-Lock Nut	
8	7/16" SAE Flat Washer	
4	7/16" - 14 X 1 1/4" Hex Bolt	End Link Brkt.
1	7/16" -14 C-Lock Nut	
4	7/16" SAE Flat Washer	
2	1/2"-13 x 3" Bolt	Swy Bar End Link
2	1/2"-13 C-Lock Nut	
4	1/2" SAE Flat Washer	
2	1/2"-13 x 3" Button Head Bolt	
4	1/2" - 13 X 1 1/4" Hex Bolt	Brake Line Brkts.
4	1/2" - 13 C-Lock Nut	
8	1/2" SAE Flat Washers	
6	1/2" - 13 X 4 1/2" Hex Bolt	Frame Pockets
4	1/2" - 13 C-Lock Nut	
10	1/2" SAE Flat Washer	
2	1/2" - 13 X 1 1/4" Button Head Bolt	Frame Pockets
2	1/2" SAE Flat Washer	
4	1/4"-28 90 degree grease fitting	

	FT44159 Hardware Kit -	
Qua	Description	Location
4	14MM - 2.0 X 180MM Hex Bolt	Trans. Crossmember
4	14MM - 2.0 C-Lock Nut	
8	14MM Flat Washer	
4	3/4"- 10 X 4 1/2" Hex Bolt	Link Arms
4	3/4" - 10 C-Lock Nut	
8	3/4" SAE Flat Washer	
1	9/16" - 12 X 3" Hex Bolt	Trac Bar
1	9/16" - 12 C-Lock Nut	
2	9/16" SAE Flat Washer	
1	14mm - 2.0 X 80mm Hex Bolt	
1	14mm Flat Washer	
1	7/16" - 14 X 1 1/4" Hex Bolt	Trac Bar Bracket
1	7/16" SAE Flat Washer	
1	7/16" Split Lock Washer	
2	5/16"-18 X 3" Hex Bolt	Bump Stop Mount
2	5/16"-18 C-Lock Nut	
4	5/16" Flat Washer	
2	1/2"-13 X 1 1/4" Hex Bolt	Bmp Stop Supp.Tube
2	Flat Washer	
2	Split Lock Washer	

YOU MUST INSTALL THE PROPER TRANSMISSION BRACKET WITH THIS KIT. SEE LIST BELOW FOR PROPER APPLICATION. CONTACT FABTECH FOR BRACKET AVAILILTY.

FTS93003	Diesel (5.9L) 06-07 Auto 2500 4wd		
FTS93004	Gas 03-05 Auto 2500 4wd	FTS93007	Gas 06-07 Auto 2500 4wd
FTS93005	Diesel 03-05 Auto 2500 4wd	FTS93008	Diesel (6.7L) 2007 Auto 4wd



6" LONG ARM LIFT SYSTEM
2003 – 2008 DODGE RAM 2500 & 3500 4WD
2006 – 2008 2500 MEGA CAB 4WD

TOOL LIST: (NOT INCLUDED)

- FLOOR JACK
- JACK STANDS
- ASSORTED METRIC AND S.A.E SOCKETS, & ALLEN WRENCHES
- PITMAN ARM PULLER
- GREASE GUN
- DIE GRINDER WITH CUT OFF WHEEL
- DRILL w/ ASSORTED DRILL BITS

CHECK ALL PARTS INCLUDED IN THIS KIT TO THE PARTS LIST ABOVE BEFORE BEGINNING INSTALLATION OF THE KIT. IF ANY PIECES ARE MISSING, PLEASE CONTACT FABTECH AT 909-597-7800.

READ ALL INSTRUCTIONS THOROUGHLY FROM START TO FINISH BEFORE BEGINNING INSTALLATION!

VEHICLES THAT WILL RECEIVE OVERSIZED TIRES SHOULD CHECK BALL JOINTS, TIE RODS ENDS AND IDLER ARM EVERY 2500-5000 MILES FOR WEAR AND REPLACE AS NEEDED.

THIS KIT MUST BE INSTALLED WITH A FABTECH 6" LIFT COIL SPRING KIT, FRONT SHOCKS AND, REAR SHOCKS, OR DIRT LOGIC COILOVER CONVERSION AND REAR SHOCKS.

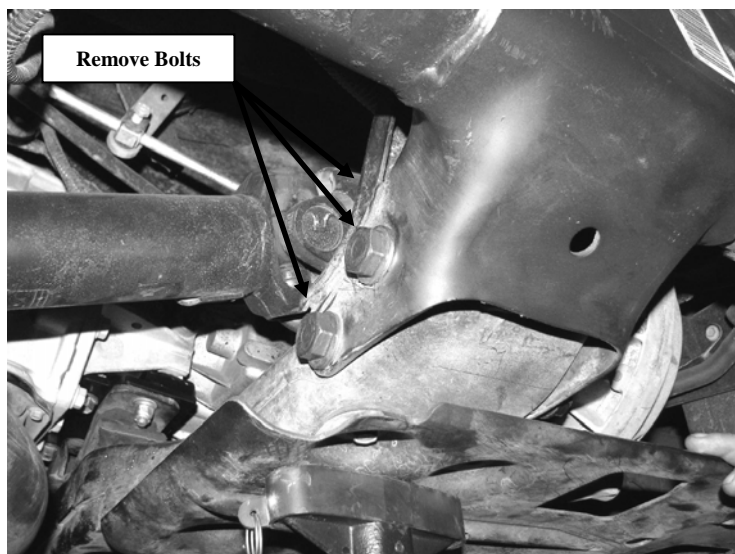
THIS SYSTEM COMES WITH A 4" LIFT BLOCK FOR THE REAR, DUE TO DIFFERENT CAB & MOTOR CONFIGURATIONS YOU MAY NEED TO CONTACT YOUR FABTECH DEALER TO PURCHASE A LARGER BLOCK TO LEVEL YOUR TRUCK. MOST MODELS REQUIRE A 4" LIFT BLOCK TO LEVEL THE TRUCK.

DODGE 3/4 TON TRUCKS COME WITH TWO DIFFERENT REAR U-BOLT SIZES. THEY DIFFER DEPENDING ON IF YOUR MODEL IS A GAS OR DIESEL. THE U-BOLTS ARE SUPPLIED IN THE COIL SPRING BOX KIT.

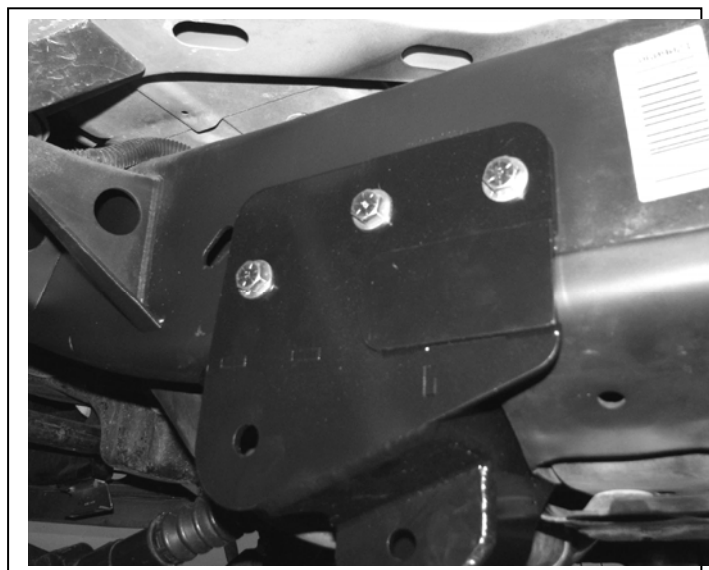
THIS KIT ALLOWS THE USE OF 37X12.50R17 TIRES ON A 17X9 RIM W/ 5" BACK SPACING. SOME MINOR TRIMMING MAY BE REQUIRED ON SOME MODELS.

LONG BED MODELS MAY REQUIRE LENGTHENING OF REAR DRIVELINE.

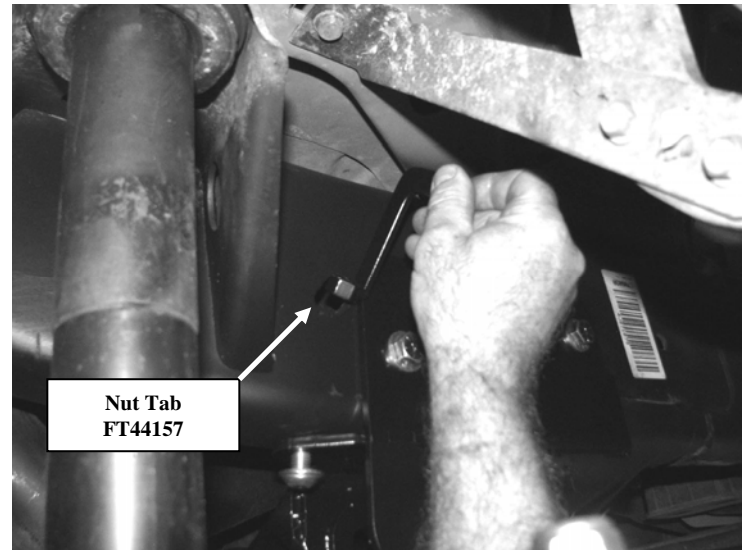
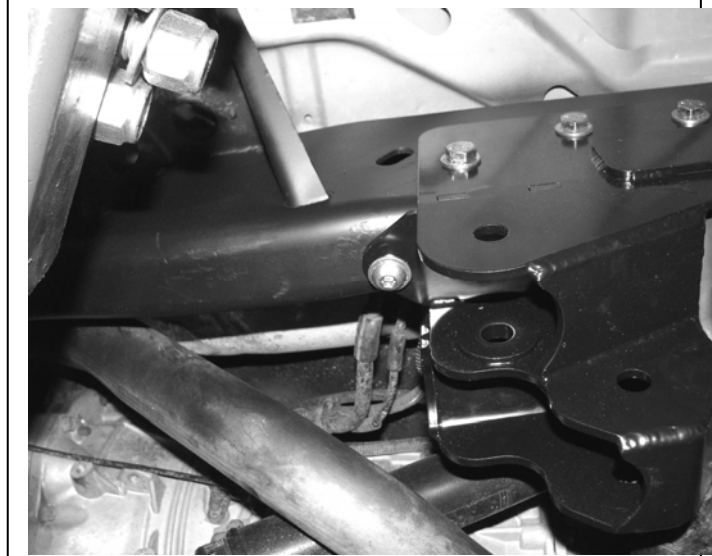
1. Remove the bolts attaching the lower link arms to the front axle and then the frame. Save the factory bolts from the axle mount and discard the bolts from the frame mount along with the links.
2. Remove the bolts attaching the upper link arms to the front axle and then the frame. Save the factory bolts from the axle mount and discard the bolts from the frame mount along with the links. **ON PASSENGER SIDE OF THE TRUCK, THE UPPER LINK ARM BOLT AT THE FRAME MOUNT WILL NEED TO BE CUT OUT FOR REMOVAL.**
3. Locate the factory Link Arm Mounts on the frame. Using a die grinder with a cut off wheel, remove the mount from the frame then clean up the area with a sanding disc and paint all bare metal areas.
4. Support the transmission crossmember and remove the two bolts that secure the crossmember to the frame. Discard the hardware. SEE PHOTO IN NEXT COLUMN.



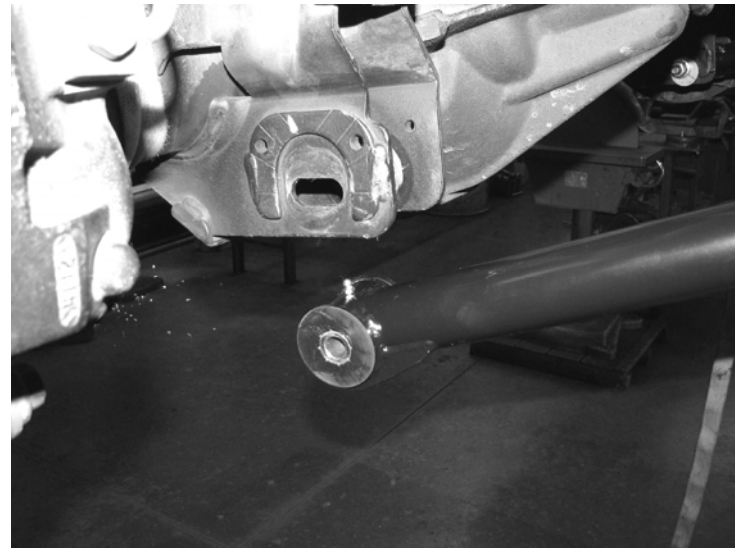
5. Locate FT44184BK driver side link arm pocket and supplied 14mm hardware. Slide the pocket onto the frame so that it butts up against the crossmember and fits over the weld on the frame. Tighten the hardware to snug the pocket to the frame and crossmember. Mark and drill the four holes in the frame to 1/2". Remove the pocket and drill the front side of the three holes in the side of the frame out to 1". Do not drill this 1" hole all the way through the frame. **CHECK THE INSIDE OF THE FRAME RAIL BEFORE DRILLING. USE CARE NOT TO HIT ANY LINES OR WIRES.** SEE PHOTO BELOW.

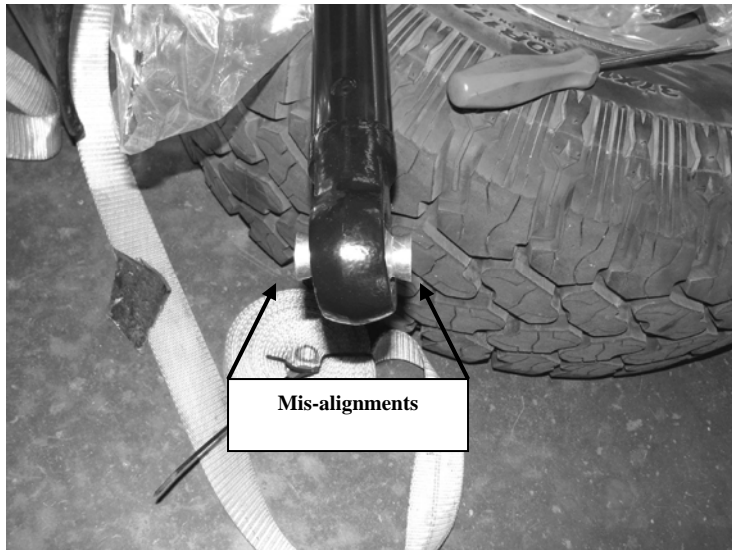


6. Locate and insert the three FT177 frame sleeves into the three holes in the side of the frame. Re-install the pocket using the supplied 1/2" hardware. The rear bolt uses a flat washer on the bolt on both sides of the frame and nut tab FT44154. The front of the pocket gets the 1/2" button head bolt with one flat washer and nut tab FT44152. Torque the 1/2" hardware to **127 ft-lbs and the 14mm hardware to **215 ft-lbs. SEE PHOTOS ON NEXT PAGE.



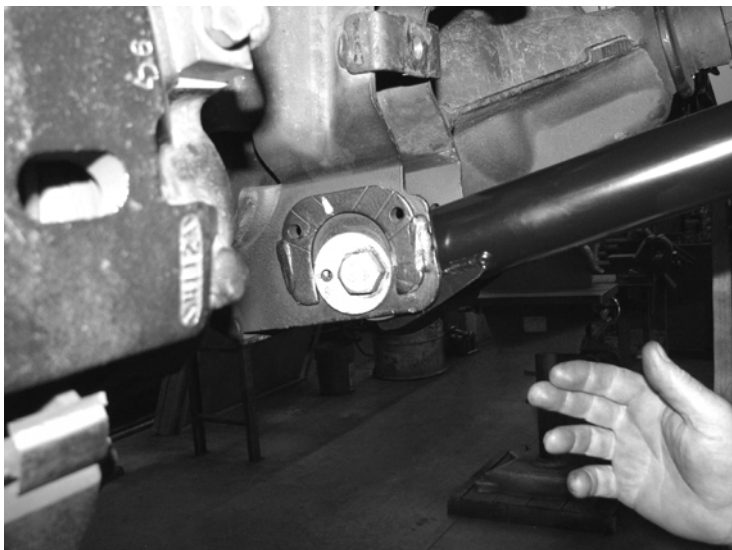
7. Repeat steps nine through sixteen on the passenger side of the truck.
8. Locate FT44148BK upper link arms. (**This link is shorter than the lower link**). Press two FT1037 small bushings into the end of the upper link arm. Locate FT76 upper link arm sleeve and press into the bushings. Use the supplied FTLUBE on the surfaces of the bushings and sleeves before installing. Install one of the supplied grease fitting into each barrel on the link arms. Locate two of the FTS43 misalignments and insert into the uniball. SEE PHOTOS ON NEXT PAGE.



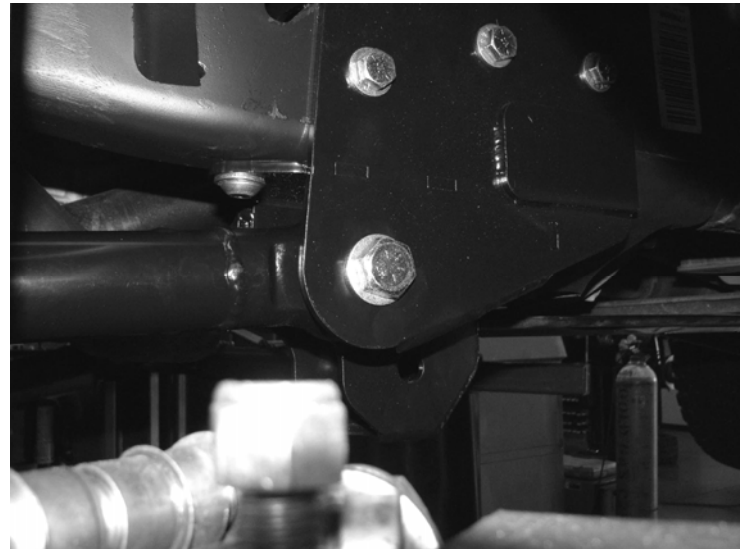


9. Locate FT44149BK lower link arms. **(This link is longer than the upper link)** Press two FT1038 large bushings into the end of the lower link arms. Locate FT77 lower link arm sleeve and press into the bushings. Use the supplied FTLUBE on the surfaces of the bushings and sleeves before installing. Install one of the supplied grease fittings into each barrel on the link arms. Locate the remaining two FTS43 mis-alignments and insert them into the uni-ball.

10. Locate the assembled FT44149BK lower link arms. Attach the link arms to the axle mount first, using the original hardware, then to the new frame pockets using the supplied 3/4" hardware. The uni-ball goes into the new frame pocket. **NOTE: When installing the link arms onto the truck, make sure the gussets on the lower arms facing down. Also when reinstalling the alignment cam bolts in the lower axle pivot, make sure they are set in the center of of their adjustment.** Leave the link arm bolts loose at this time. SEE PHOTO



11. Locate the assembled FT44148BK upper link arms. Attach the link arms to the new frame pocket using the supplied 3/4" hardware (DO NOT ATTACH TO AXLE MOUNT AT THIS TIME). The uni-ball goes into the new frame pocket. **Note: When installing the upper links, make sure that the gussets are facing up.** Leave the link arm bolts loose at this time. SEE PHOTO BELOW.



**** USE THE SUPPLIED THREAD-LOCKING COMPOUND ON ALL HARDWARE.**

S.A.E. Bolt Torque Specification Chart

Grade 5



Grade 8



Metric



Standard			Metric		
	Grade 5	Grade 8		Grade 8.8	Grade 10.9
SIZE	ft. lbs.	ft. lbs.	SIZE	ft. lbs.	ft. lbs.
1/4"	10	14	M-6	7	12
5/16"	21	29	M-8	17	29
3/8"	37	52	M-10	35	58
7/16"	59	83	M-12	65	100
1/2"	90	127	M-14	100	160
9/16"	129	184	M-16	150	240
5/8"	179	254	M-18	200	300
3/4"	317	450	M-20	300	400

RETORQUE ALL NUTS, BOLTS AND LUGS AFTER 50 MILES AND PERIODICALLY THEREAFTER.

For technical assistance call: 909-597-7800

Product Warranty and Warnings-

Fabtech provides a Limited Lifetime Warranty to the original retail purchaser who owns the vehicle, on which the product was originally installed, for defects in workmanship and materials.

The Limited Lifetime Warranty excludes the following Fabtech items; bushings, bump stops, ball joints, tie rod ends, limiting straps, cross shafts, heim joints. These parts are subject to wear and are not considered defective when worn. They are warranted for 60 days from the date of purchase for defects in workmanship.

Take apart shocks are considered a serviceable shock with a one year warranty on leakage only. Service seal kits are available separately for future maintenance. All other shocks are covered under our Limited Lifetime Warranty.

Fabtech does not warrant any product for finish, alterations, modifications and/or installation contrary to Fabtech's instructions. Alterations to the finish of the parts including but not limited to painting, powdercoating, plating and/or welding will void all warranties. Some finish damage may occur to parts during shipping which is considered normal and is not covered under warranty.

Fabtech products are not designed nor intended to be installed on vehicles used in race applications or for racing purposes or for similar activities. (A "RACE" is defined as any contest between two or more vehicles, or any contest of one or more vehicle against the clock, whether or not such contest is for a prize). This warranty does not include coverage for police or taxi vehicles, race vehicles, or vehicles used for government or commercial purposes. Also excluded from this warranty are sales outside of the United States of America.

Installation of most suspension products will raise the center of gravity of the vehicle and will cause the vehicle to handle differently than stock. It may increase the vehicle's susceptibility to a rollover, on road and off road, at all speeds. Extreme care should be taken to operate the vehicle safely at all times to prevent rollover or loss of control resulting in serious injury or death. Fabtech front end Desert Guards may impair the deployment or operation of vehicles equipped with supplemental restraining systems/air bag systems and should not be installed if the vehicle is equipped as so.

Fabtech makes every effort to ensure suspension product compatibility with all vehicles listed in the catalog, but due to unknown auto manufacturers production changes and/or inconsistencies by the auto manufacturer, Fabtech cannot be responsible for 100% compatibility, including the fitment of tire and wheel sizes listed. The Tire and Wheel sizes listed in Fabtech's catalog are only a guideline for street driving with noted fender trimming. Fabtech is not responsible for damages to the vehicle's body or tires.

Fabtech's obligation under this warranty is limited to the repair or replacement, at Fabtech option, of the defective product only. All costs of removal, installation or re-installation, freight charges, incidental or consequential damages are expressly excluded from this warranty. Fabtech is not responsible for damages and/or warranty of other vehicle parts related or non related to the installed Fabtech product. This warranty is expressly in lieu of all other warranties expressed or implied. This warranty shall not apply to any product that has been subject to accident, negligence, alteration, abuse or misuse as determined by Fabtech.

Fabtech suspension components must be installed as a complete system including shocks as shown in our current catalog. All warranties will become void if Fabtech parts are combined and/or substituted with other aftermarket suspension products. Combination and/or substitution of other aftermarket suspension parts may cause premature wear and/or product failure resulting in an accident causing injury or death. Fabtech does not warrant products not manufactured by Fabtech.

Installation of Fabtech product may void the vehicles factory warranty; it is the consumer's responsibility to check with their local vehicle's dealer for warranty disposition before the installation of the product.

It is the responsibility of the distributor and/or the retailer to review all warranties and warnings of Fabtech products with the consumer prior to purchase.

Fabtech reserves the right to supercede, discontinue, change the design, finish, part number and, or application of parts when deemed necessary without written notice. Fabtech is not responsible for misprints or typographical errors within the catalog or price sheet.