



INSTALLATION INSTRUCTIONS



2013-2018 DODGE 3500 4WD 5" 4-LINK KIT W/ COILS

FTS23101/FTS23102/FTS23103 - 4-LINK KITS

FT23100i

Fabtech Motorsports | 4331 Eucalyptus Ave. Chino, CA 91710

Tech Line: 909-597-7800 | **Fax:** 909-597-7185 | **Web:** www.fabtechmotorsports.com

FTS23085		5" 4-LINK KIT W/ COILS
1	FT44172	DODGE PITMAN ARM
1	FT44236BK	TRACK BAR BRACKET
1	FT44298BK	LOWER SPRING PERCH (DRIVER)
1	FT44299BK	LOWER SPRING PERCH (PASSENGER)
2	FT44316BK	FRONT COIL SPRING
1	FT44300BK	4 LINK BRACKET DRIVER
1	FT44301BK	4 LINK BRACKET PASSENGER
2	FT44318BK	CROSSMEMBER BACK PLATE
2	FT44356BK	COIL RETAINER

FTS23100		COMPONENT BOX 2
1	FT44518	BUMP STOP MOUNT DRIVER
1	FT44519	BUMP STOP MOUNT PASSENGER
2	FT44242BK	BUMPSTOP SPACER
1	FT44462	HARDWARE KIT
1	FT44303BK	4 LINK UPPER DRIVER
1	FT44304BK	4 LINK UPPER PASSENGER
1	FT44305BK	4 LINK LOWER DRIVER
1	FT44306BK	4 LINK LOWER PASSENGER

FTS23101		COMPONENT BOX 3 W/PERFORMANCE SHOCKS
2	FTBK21	2.0" BLOCK
4	FT738U	UBOLTS
1	FT44367	HARDWARE SUBASSEMBLY
2	FTS7343	PERFORMANCE SHOCK (FRONT)
2	FTS7335	PERFORMANCE SHOCK (REAR)

FTS23102		COMPONENT BOX 3 W/STEALTH SHOCKS
2	FTBK21	2.0 BLOCK
4	FT738U	UBOLTS
1	FT44367	HARDWARE SUBASSEMBLY
2	FTS6343	STEALTH MONOTUBE (FRONT)
2	FTS6335	STEALTH MONOTUBE (REAR)

FTS23089		COMPONENT BOX 3 W/DIRT LOGIC SS SHOCKS
2	FTBK21	2.0 BLOCK
4	FT738U	UBOLTS
1	FT44368	HARDWARE SUBASSEMBLY
2	FT801032	2.25 DIRT LOGIC SS RESI (FRONT)
2	FT810362	2.25 DIRT LOGIC SS NON RESI (REAR)

FT44462 - HARDWARE KIT		LOCATION
	FT44369	
	BAG 1	
1	M18-2.5 X 90MM HEX BOLT	TRACK BAR DROP BRACKET
2	M18 WASHERS	
1	NUT C-LOCK 18MM G10.9 ZINC	
2	1/2-13 X 1-1/2 HEX BOLT G8 ZINC	TRACK BAR BRACKET
4	1/2" WASHERS	
2	1/2 -13 C-LOCK NUT ZINC	
2	1/2-13 X 4" HEX BOLT G8	COIL RETAINER
4	1/2 SAE WASHER G8 ZINC	
2	1/2 -13 C-LOCK NUT ZINC	
	BAG 2	
4	1/4 SAE WASHER	
2	1/4-20 C-LOCK NUTS	
2	1/4-20 X 1 HEX BOLT	
4	1/2-13 1-1/4 HEX BOLT ZINC	
8	1/2 SAE WASHER ZINC	
2	5/16-18 X 2-1/2 HEX BOLT ZINC	BUMP STOP
10	5/16 SAE WASHER G8 ZINC	
4	5/16-18 C-LOCK NUT ZINC	
4	5/16-18 X 1-1/2 HEX BOLT	
	BAG 3	
4	7/16-14 X 1-1/4 HEX BOLT ZINC	REAR BUMP STOP
8	7/16 SAE WASHER G8 ZINC	
4	7/16-14 C-LOCK NUT ZINC	
8	9/16" SAE WASHER	UBOLTS
8	9/16-18 NYLOCK NUT	
	BAG 4	
2	7/16-14 X 1-1/4 HEX BOLT G8 ZC	
2	7/16 SAE WASHER G8 ZINC	
2	7/16 LOCK WASHER	
4	1/2-13 X 1-1/2 HEX BOLT G8 ZNC	
4	1/2-13 C-LOCK NUT G8	
6	1/2 SAE WASHER G8 ZINC	
10	5/8-11 X 1-3/4 HEX BOLT	
20	5/8 SAE WASHER	
10	5/8-11 C-LOCK NUT	
2	3/4-10 X 1-1/4 HEX BOLT	
2	3/4-10 X 2" HEX BOLT	
20	3/4 SAE WASHER	
4	3/4-10 X 5" HEX BOLT	
8	3/4-10 C-LOCK NUT	
FT44452 - HARDWARE KIT		
2	1/4-20 X 2-1/2" HEX BOLT	BUMPSTOP
4	1/4" SAE WASHER	
2	1/2-20 NYLOCK NUT	

FT44367		HARDWARE SUBASSEMBLY
2	FT44317	LOWER SPRING PERCH NUT TAB
2	FT44135	BUMP STOP MOUNT TAB
2	FT44245	BRAKE LINE EXT
1	FT44246	TRACK BAR SUPPORT SPACER
2	FT44258	1/4 NUT TAB
1	FT50184	TRAC BAR SUPPORT NUT TAB
1	FT23100i	INSTRUCTIONS
1	FT44359	COIL RETAINER WASHER
1	FT44239	WASHER 4.250 X .510 X .250
4	FT44302	MISALIGNMENT
4	FT103	MISALIGNMENT SPACER CLEAR ZINC
4	FT404739	SLEEVE OD 0.62, ID 12MM, L1.48
2	FT44324	NUT TAB
1	FT44223	NUT TAB
1	FT30182	NUT TAB
1	FTAS16	DRIVER WARNING DECAL
1	FTAS12	STICKER FT BLUE 10X4
1	FTREGCARD	REGISTRATION CARD

FT44368		HARDWARE SUBASSEMBLY
2	FTSP01029	HARDWARE PACK STEM BUSHING
2	FT86021	HARDWARE & BUSHING KIT 21
4	FT83076	1.5/1.75-2.25/2.5 RESI URETHANE
4	FT89016	#64 HOSE CLAMP
2	FT44317	LOWER SPRING PERCH NUT TAB
2	FT44135	BUMP STOP MOUNT TAB
2	FT44245	BRAKE LINE EXT
1	FT44246	TRACK BAR SUPPORT SPACER
2	FT44258	1/4 NUT TAB
1	FT50184	TRAC BAR SUPPORT NUT TAB
1	FTAS16	DRIVER WARNING DECAL
1	FTAS12	STICKER FT BLUE 10X4
1	FTREGCARD	REGISTRATION CARD
1	FT23100i	INSTRUCTIONS
1	FT44359	COIL RETAINER WASHER
1	FT44239	WASHER 4.250 X .510 X .250
4	FT44302	MISALIGNMENT
4	FT103	MISALIGNMENT SPACER CLEAR ZINC
1	FT30182	NUT TAB
2	FT44324	NUT TAB
2	FT86008	HARDWARE & BUSHING KIT 8
1	FT44223	NUT TAB

- TOOL LIST -

Required Tools (Not Included)

- Basic Hand Tools
- Floor Jack
- Jack Stands
- Assorted Metric and S.A.E sockets, and Allen wrenches
- Torque Wrench
- Die Grinder w/ Cutoff Wheel or Sawzall

- PRE-INSTALLATION NOTES -

For technical assistance call: **909-597-7800** or e-mail: **info@fabtechmotorsports.com**

Read this before you begin installation-

Check all parts to the parts list above before beginning installation. If any parts are missing contact Fabtech at 909-597-7800 and a replacement part will be sent to you immediately.

This suspension and shocks has been designed to be installed on a stock vehicle.

Read all instructions thoroughly from start to finish before beginning the installation. If these instructions are not properly followed severe frame, driveline and / or suspension damage may occur.

Check your local city and state laws prior to the installation of this system for legality. Do not install if not legal in your area.

Prior to the installation of this suspension system perform a front end alignment and record. Do not install this system if the vehicle alignment is not within factory specifications. Check for frame and suspension damage prior to installation.

The installation of this suspension system should be performed by two professional mechanics.

This suspension must be installed with Fabtech shock absorbers.

Use the provided thread locking compound on all hardware.

WARNING- Installation of this system will alter the center of gravity of the vehicle and may increase roll over as compared to stock.

Vehicles that receive oversized tires should check ball joints, uniballs, tie rods ends, pitman arm and idler arm every 2500-5000 miles for wear and replace as needed.

Verify differential fluid is at manufactures recommended level prior to kit installation. Installation of the kit will reposition the differential and the fill plug hole may be in a different position. (For example, if the manufacture recommends 3 quarts of fluid, make sure the diff has 3 quarts of fluid). Check your specific manual for correct amount of fluid.

FOOTNOTES-

- Will not fit gas motors.
- Does not fit power wagon models.
- Does not fit dually models.
- For vehicles equipped with automatic transmissions only

RECOMMENDED TIRE/WHEEL SIZES -

- 37x12.50/R17 tire w/ 17x9 wheels w/ 5" BS w/ minor trimming
- 37x12.50/R18 tire w/ 18x9 wheels w/ 5" BS w/ minor trimming
- 37x13.50/R20 tire w/ 20x9.5 wheels w/ 5" BS w/ minor trimming
- 37x13.50/R22 tire w/ 22x9.5 wheels w/ 5" BS w/ minor trimming

- INSTRUCTIONS -

FRONT SUSPENSION

1. Disconnect the negative terminal on the battery. Jack up the front end of the truck and support the frame rails with jack stands. **NEVER WORK UNDER AN UNSUPPORTED VEHICLE!** Remove the front tires.
2. **DRIVER SIDE ONLY** - Starting on the driver side, remove the driver side fender liner.
3. Remove the factory shock and discard. Retain factory lower hardware.
4. Disconnect factory sway bar links.
5. Remove factory coil spring and rubber isolator. Retain these parts for later use.
6. Remove the factory pitman arm and discard. Keep hardware.
7. Locate the new FT44172 Fabtech pitman arm and install. Do not reconnect the factory drag link at this time. Reinstall the factory lock washer plus thread locker. Torque to 220ft-lbs.
8. Unthread the factory drag link at the adjuster sleeve and remove adjuster sleeve. **SEE FIGURE 1**

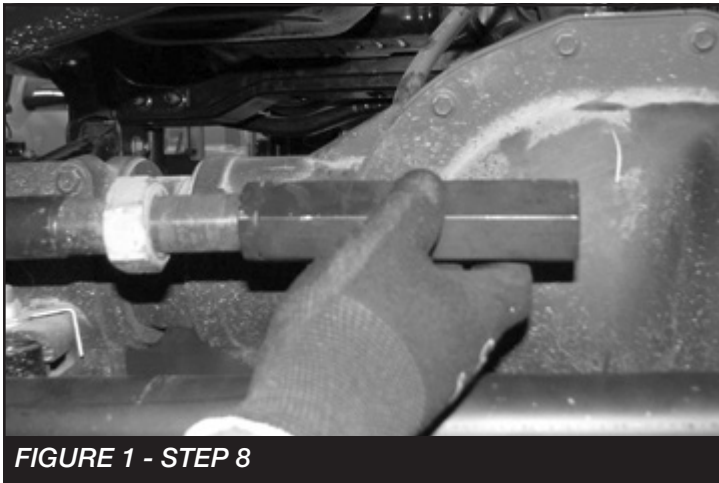


FIGURE 1 - STEP 8

9. Using a die grinder remove the flat nonthreaded section from both ends of the drag link. This will allow you to rotate the drag link and line it up with the pitman arm. **SEE FIGURES 2-4**



FIGURE 2 - STEP 9

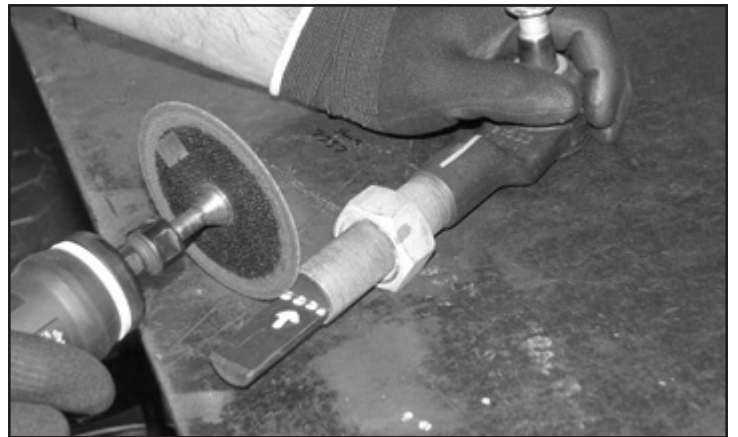


FIGURE 3 - STEP 9

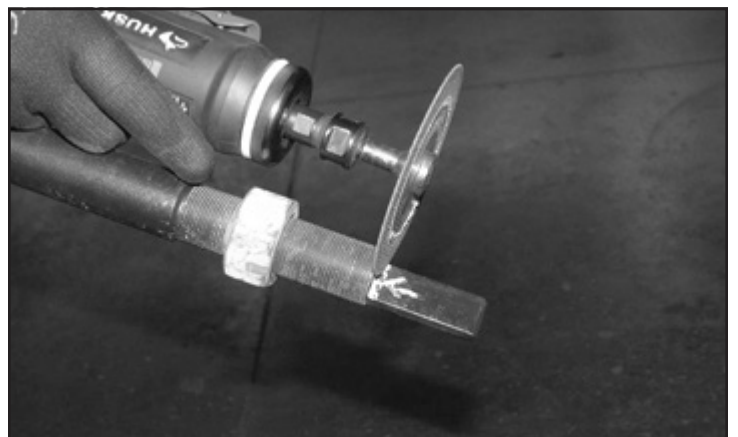
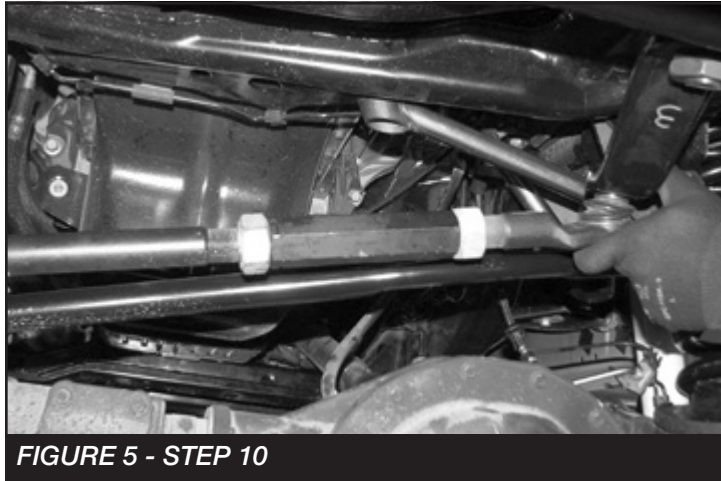


FIGURE 4 - STEP 9

10. Reassemble the drag link and connect it to the new pitman arm. **SEE FIGURE 5**



11. Torque the drag link to 83 ft-lbs.
12. Remove the track bar from the frame side of the vehicle.
13. Locate the FT44236BK track bar bracket and M18-2.5 x 90mm bolt.
14. Slide the track bar bracket into the factory mount and insert the M18 bolt into the factory pivot hole. **SEE FIGURE 6**

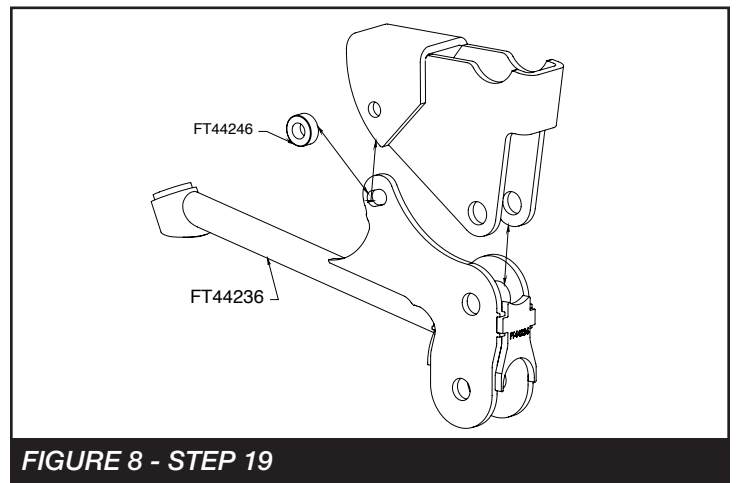


15. Rotate the bracket up until the end of the bracket is flush with the crossmember under the motor.
16. Using the Fabtech bracket as a guide, mark the factory mount for the upper driver side mounting hole.

17. Swing the bracket back out of the way. Using a 1/2" drill bit, drill out the marked hole. **SEE FIGURE 7**



18. Locate one FT44246 sleeve and two 1/2"-13 x 1-1/2" bolts, nuts and washers.
19. Rotate the track bar bracket back into place and bolt together using 1/2"-13 x 1-1/2" bolt and the sleeve. **SEE FIGURES 8-9**



20. Using the Fabtech bracket as a guide, drill a 1/2" hole in the cross member under the motor. Next, mount using 1/2"-13x1.5" and washer. **SEE FIGURE 10**



FIGURE 10 - STEP 20

21. Remove the factory coil springs and lower rubber isolators. **SEE FIGURE 11**



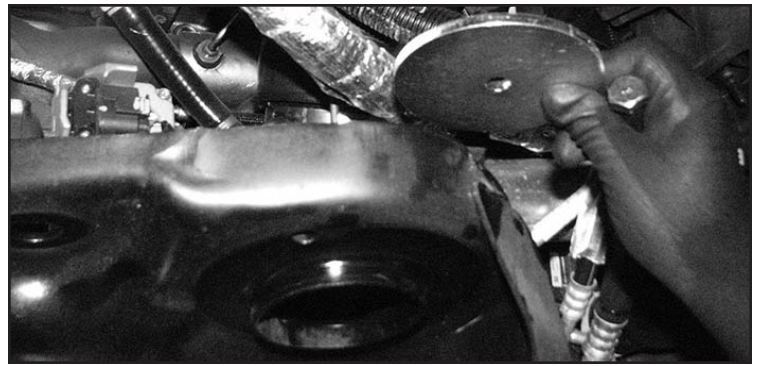
FIGURE 11 - STEP 21

22. **(DRIVER SIDE)** Locate FT44356BK (Coil Retainer), FT44359 (Washer), 1/2"-13 X 4" Bolt, nut and washer. **(Driver side)** Remove the bolts attaching the ABS module to the spring perch and install the 1/2" bolt and FT44359. Install the FT44356BK (Retainer) and 1/2" washer and nut. Torque to 100 ft-lbs. **SEE FIGURE 12 (PASSENGER SIDE)** Repeat the same process using FT44239 (Washer). **SEE FIGURE 13**

NOTE: IF INSTALLING DUAL SHOCKS DO SO NOW WITH THE INSTRUCTIONS PROVIDED



FIGURE 12 - STEP 22



23. Locate FT44298BK (lower spring perch spacer), FT44317 (lower spring perch nut tab) and 5/16" hardware. Install the new spring spacer by lining up the existing rear hole. Use the 5/16" hardware and FT44317 nut tab. **SEE FIGURE 13**



FIGURE 13 - STEP 23

24. Using the existing spacer hole as a guide, drill through the factory spring perch using a 11/32" drill bit and install the 5/16" hardware to 29 ft-lbs. **SEE FIGURES 14-15**



FIGURE 14 - STEP 23



FIGURE 15 - STEP 21

25. Remove and save the factory rubber bump stop.

SEE FIGURE 16. Insert the factory rubber bumpstop into the new Fabtech bumpstop bracket (FT44518). Using a 1/4" drill, drill a hole through the factory rubber bumpstop using the new bracket as a guide. Then install the supplied 1/4" X 2-1/2" hardware. Torque to 14 ft-lbs. **SEE FIGURE 17**



FIGURE 16 - STEP 25



FIGURE 17 - STEP 25

26. Using a die grinder, grind out the stamped in tabs on the inside of the bump stop housing. **SEE FIGURES 18-19**

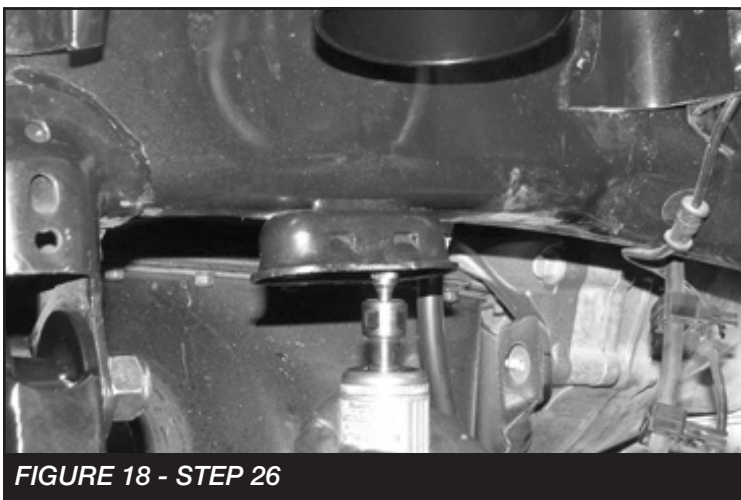


FIGURE 18 - STEP 26



FIGURE 19 - STEP 26

27. Using a 1/2" drill bit, drill out the hole in the factory crossmember inline with the factory bump stop mount. **SEE FIGURE 20**



FIGURE 20 - STEP 27

28. Slide the bump stop into the factory bump stop mount. Using a 1/2"-13 x 1-1/4" bolt and the FT44135 (nut tab), bolt the bump stop to the crossmember. Torque the 1/2" bolt to 90 ft-lbs. **SEE FIGURES 21-23**

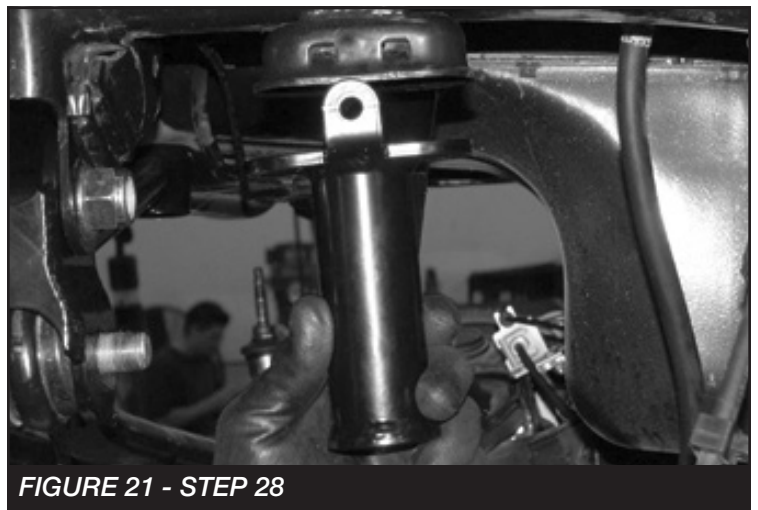


FIGURE 21 - STEP 28



FIGURE 22 - STEP 28



FIGURE 23 - STEP 28

29. Using the outer tab on the bump stop as a drill guide, drill a 5/16" hole all the way through the factory bump stop mount. **SEE FIGURE 24**

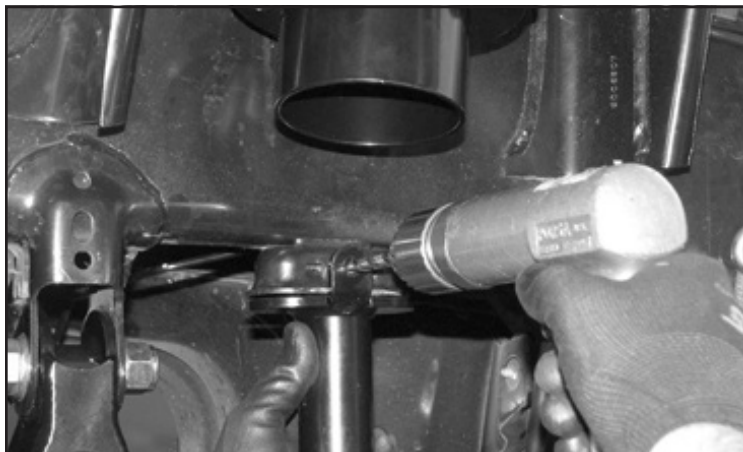


FIGURE 24 - STEP 29

30. Locate a 1/4 x 2-1/2" bolt, nut and washers. Using this bolt, secure the bump stop to the factory bump stop mount and torque to 29 ft-lbs. **SEE FIGURE 25**



FIGURE 25 - STEP 30

31. Repeat steps 2-30 on the passenger side.

32. Secure the front diff. Remove the factory driver and passenger side Radius arm. Retain Hardware.
SEE FIGURES 26-27

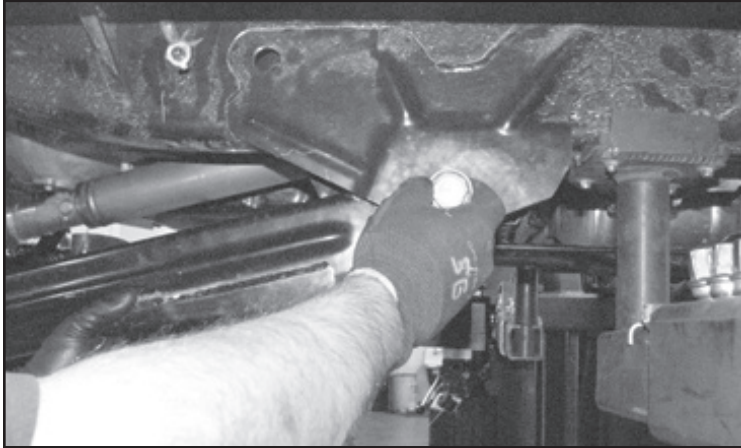


FIGURE 26 - STEP 32

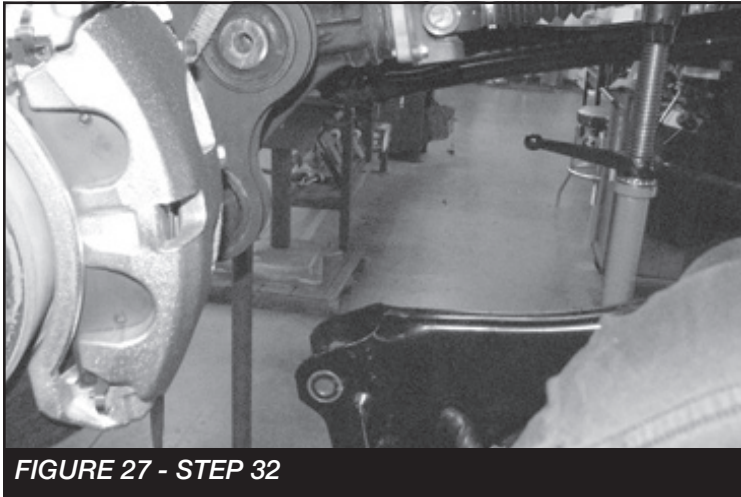


FIGURE 27 - STEP 32

NOTE: SUPPORT THE TRANSFER CASE AT THIS TIME

33. Remove the factory crossmember and skid plate that is mounted between the factory radius arm pockets. Retain Hardware. **SEE FIGURES 28-30**



FIGURE 28 - STEP 33



FIGURE 29 - STEP 33

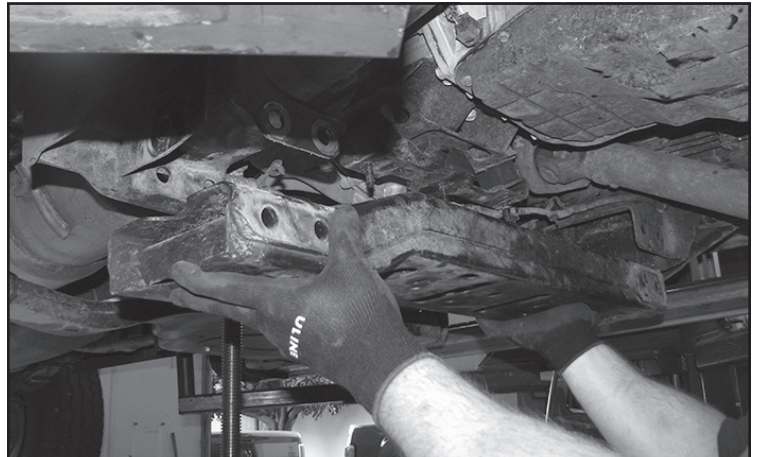
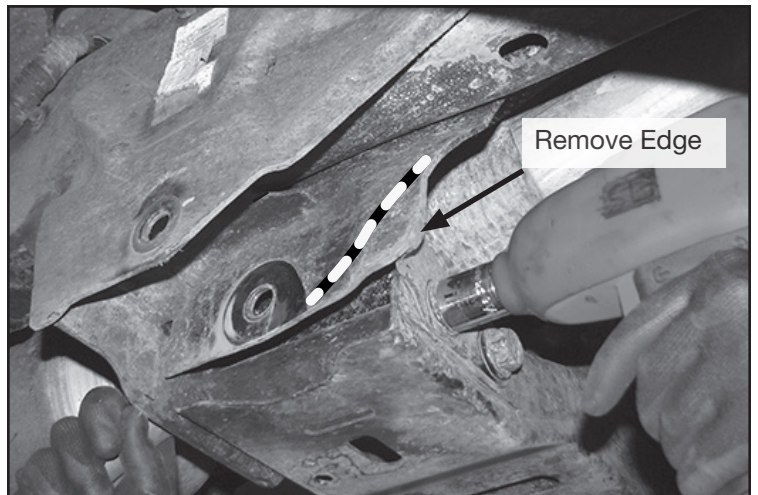


FIGURE 30 - STEP 33

- **NOTE: Trim a 2" radius off the inner front radius arm bracket. SEE FIGURE BELOW**



34. Once the crossmember is out. The inner support sleeve will need to be cut out on both sides. **SEE FIGURES 31-32**



FIGURE 31 - STEP 34



FIGURE 32 - STEP 34

35. Locate and cut out the 4-Link templates on the last pages.

36. Starting on the driver side top of the crossmember. Place the correct template on the crossmember so the edge of the template lines up to the factory edge on the crossmember. Mark for cutting. Do the same with the Driver side bottom. Follow the mark around the side and connect with the mark on the top. **SEE FIGURES 33-34**



FIGURE 33 - STEP 36

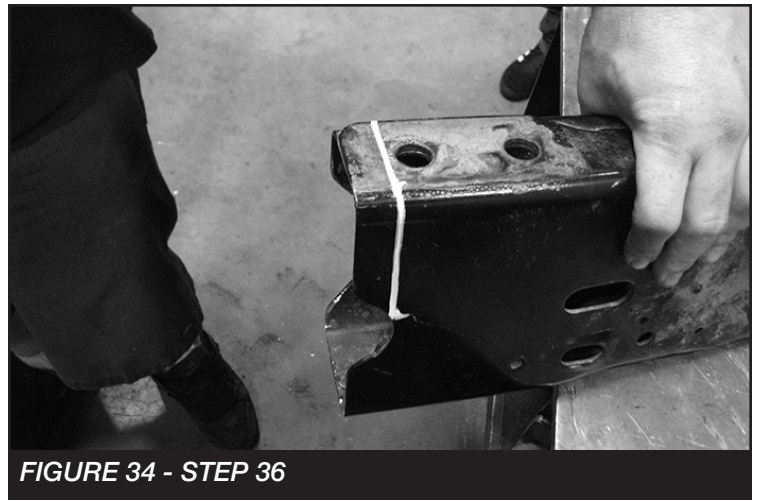


FIGURE 34 - STEP 36

37. Carefully cut the crossmember where you made the marks. Sand to a smooth edge. **FIGURE 35** shows what the driver side should look like when complete.



FIGURE 35 - STEP 37

38. Moving to the passenger side of crossmember. Place the cut out templates on the crossmember and mark for cutting. **SEE FIGURES 36-37**



FIGURE 36 - STEP 38



FIGURE 37 - STEP 38

39. Carefully cut the crossmember where you made the marks. Sand to a smooth edge. **FIGURE 38** shows what the passenger side should look like when complete. **SEE FIGURE 38**



FIGURE 38 - STEP 49

40. Locate the factory driver side crossmember frame mount. On the front side only trim 1/2" off the bottom like shown. **SEE FIGURES 39-40**

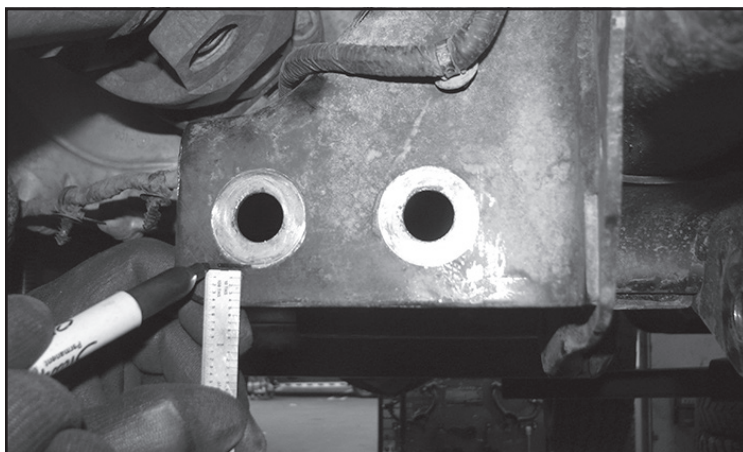


FIGURE 39 - STEP 40

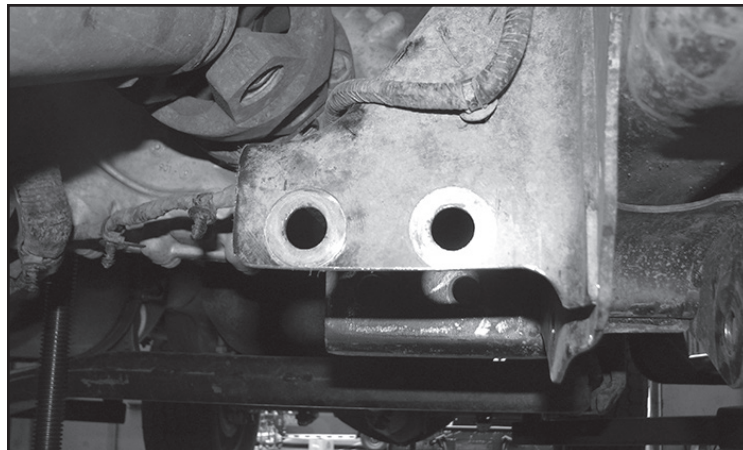


FIGURE 40 - STEP 40

41. Locate FT44300BK (4-Link Driver Bracket), starting on the driver side. Install the bracket like shown below using the 5/8"x 1-3/4" hardware and 3/4"x 1-1/4" hardware from Bag 5 in the hardware kit. Leave loose. **SEE FIGURES 41-42**

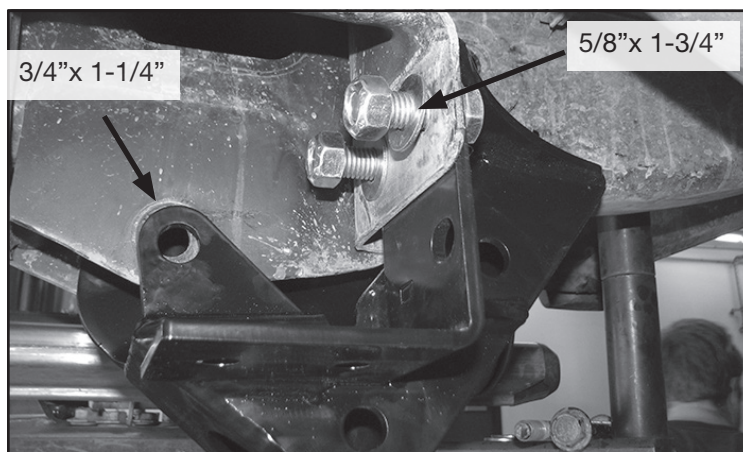


FIGURE 41 - STEP 41

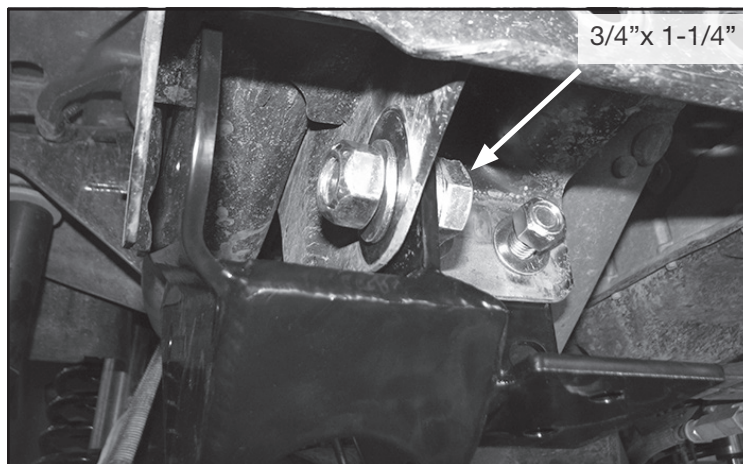


FIGURE 42 - STEP 41

42. From Bag 5, Locate the 3/4"-10 X 2" Bolt, 4 washers and nut. **NOTE: When installing the 3/4" bolt insert 2 washers between the factory bracket and the new Fabtech 4-link bracket.** Leave loose. **SEE FIGURE 43**



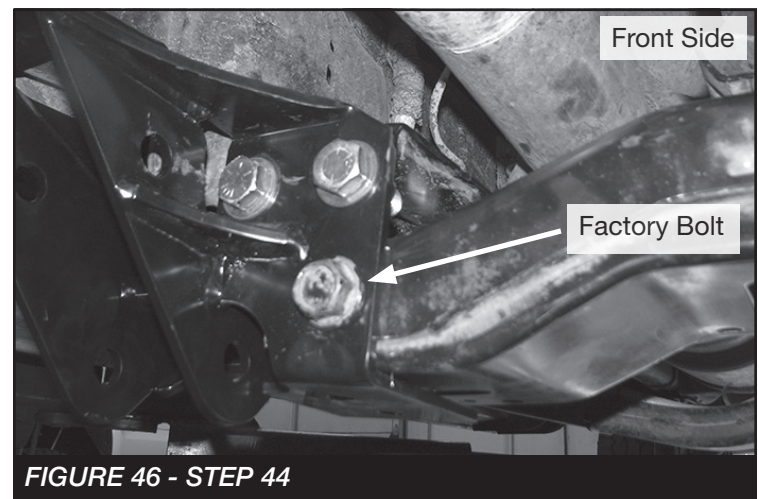
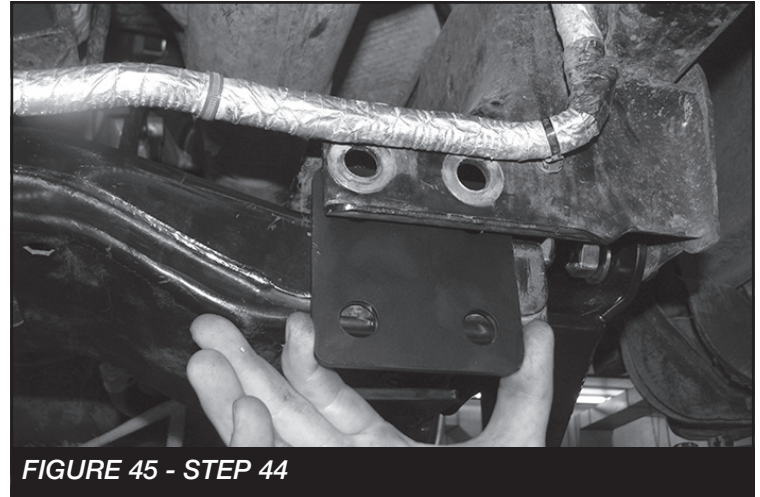
43. Locate FT44324 (Nut Tab) and 7/16" X 1-3/4" bolt and washers. Insert the nut tab through the hole on the frame and install the 7/16" bolt and washers. Torque to 83 ft-lbs. Torque the hardware installed on the previous steps to the below specifications. **SEE FIGURES 44**

- 5/8" - 254 ft-lbs
- 3/4" - 450 ft-lbs



- REPEAT STEPS 42-44 ON PASSENGER SIDE

44. Locate FT44318BK (Crossmember Back Plate) and 5/8" Hardware. Install the factory crossmember like shown in **FIGURES 45-47** using the FT44318BK bracket, 5/8" hardware and 1 of the factory bolts. Torque to 254 ft-lbs.



45. Using a 17/32" drill bit. Drill 4 total holes, 2 on the driver side and 2 on the passenger side through the crossmember using the holes in the brackets as guides. **SEE FIGURE 48**



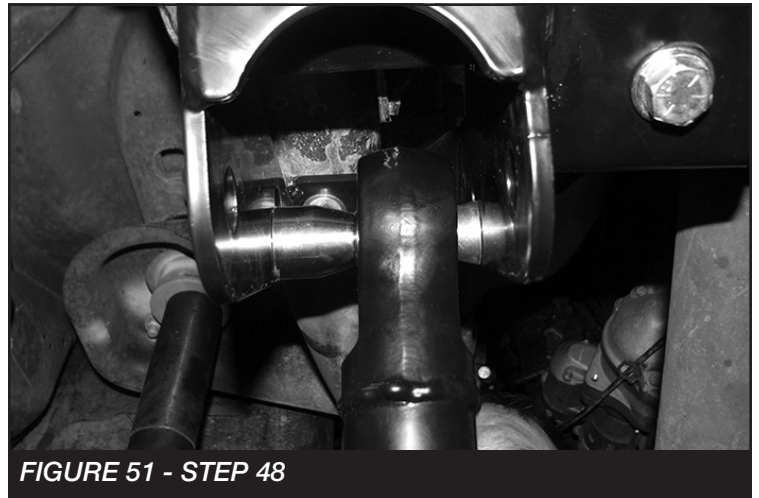
46. Starting with the driver side locate FT44223 (nut tab) (2) 1/2-13 X 1-1/2", washers and (1) 1/2" C-lock nut. **NOTE: The nut tab will be used towards the front of the vehicle.** Torque to 90 ft-lbs. **SEE FIGURE 49**



47. Next for the passenger side locate FT30182 (nut tab) (2) 1/2-13 X 1-1/2", washers and (1) 1/2" C-lock nut. Torque to 90 ft-lbs. **SEE FIGURE 50**



48. Locate and install FT44302 (Outer misalignment spacer) and FT103 (Inner misalignment spacer) onto the new 4-link arms. Install the new arms with the provided 3/4" x 5" bolts and hardware. Re-use the factory hardware for the axle side. Torque to 317 ft-lbs. **SEE FIGURES 51-53**



49. Locate the factory rear crossmember. Remove and discard the exhaust rubber isolator and bracket from the crossmember. Next, with assistance remove the 6 bolts that holds the crossmember on the frame and lower the crossmember to the bottom factory holes. **NOTE: Only 3 bolts will be used to re-attach the crossmember. SEE FIGURE 54-55**



FIGURE 54 - STEP 49



FIGURE 55 - STEP 49

50. Locate and install the new coil spring (FT44316BK) using the factory coil spring isolator. **SEE FIGURE 56**



FIGURE 56 - STEP 50

- **REPEAT STEP 50 ON PASSENGER SIDE**

51. Locate the FT44245 Brake line extension, FT44258 nut tab and two 1/4"-20 x 1" bolts. Attach the brake line extension to the axle using one bolt and the nut tab. Attach the factory brake line bracket to the Fabtech extension. Torque to 10 ft-lbs. Repeat this step on the passenger side. **SEE FIGURES 57-58**



FIGURE 57 - STEP 51



FIGURE 58 - STEP 51

52. Locate FTS7343 (Performance), FTS6343 (Stealth) or FTS811031 (Dirt Logic shock) and install into the factory shock mounts. Torque the upper mount to 14 ft-lbs and the lower 37 ft-lbs. **SEE FIGURES 59**



FIGURE 59 - STEP 52

53. Reconnect the factory sway bar. Torque to 29 ft-lbs.

SEE FIGURE 60



FIGURE 60 - STEP 53

- REAR SUSPENSION**

54. Jack up the rear end of the vehicle and support the frame rails with jack stands and remove wheels and tires. Remove the rear driver and passenger inner fender liners. **SEE FIGURE 61**



FIGURE 61 - STEP 54

55. Supporting the rear differential, remove and discard the rear shocks and u-bolts. Lower the axle down slowly. Use care not to over extend the brake hoses. **SEE FIGURES 62-63**

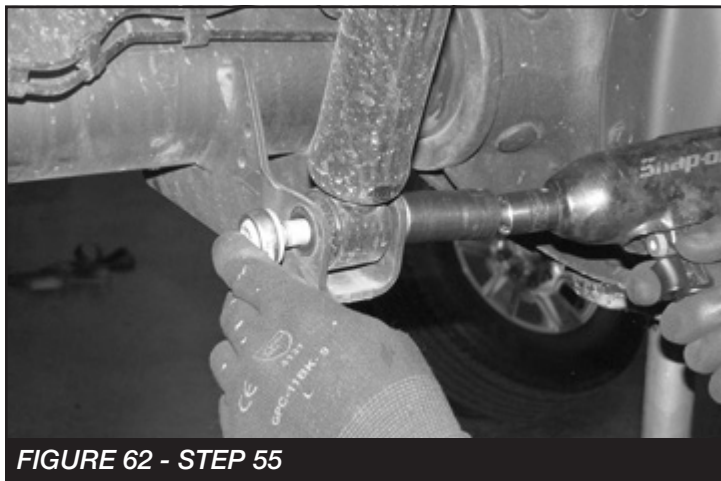


FIGURE 62 - STEP 55



FIGURE 63 - STEP 55

56. Locate the supplied 2" blocks FTBK21, FT738U u-bolts and 9/16" hardware. Install the block onto the axle with the small end of the taper to front of the truck. Using the supplied u-bolts, nuts and washers, align axle, lift block and springs and torque to u-bolts to 129 ft-lbs.

SEE FIGURES 64-67



FIGURE 64 - STEP 56



FIGURE 65 - STEP 56



FIGURE 66 - STEP 56



FIGURE 67 - STEP 56

57. Install new Fabtech Performance shocks (FTS7335), Stealth (FTS6335) or Dirt Logic 2.25" (FTS810362) with the factory hardware and torque upper and lower bolts to 29 ft-lbs.
58. Locate the FT44242BK bump stop extension. Remove driver and passenger factory bump stop. Retain Hardware.
59. Install the bump stop extension to the factory mount using the factory hardware and torque to 65 ft-lbs.
SEE FIGURE 68

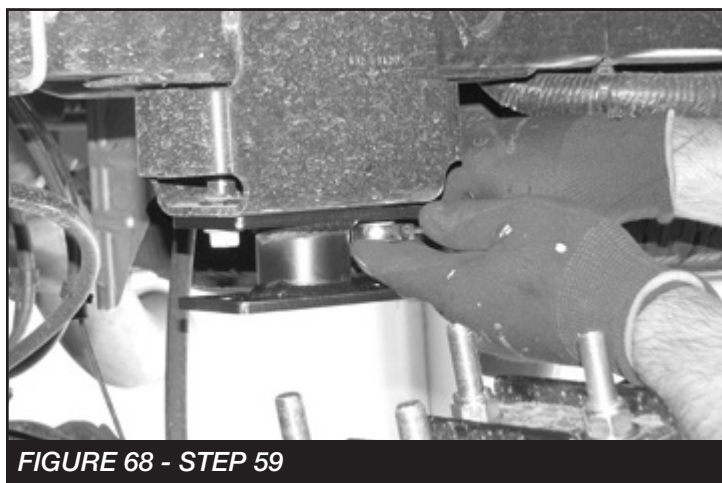


FIGURE 68 - STEP 59

60. Using 7/16"-14 x 1-1/4" bolt, nuts and washers, mount the factory bump stop to the extension. Torque to 59 ft-lbs. **SEE FIGURES 69-70**

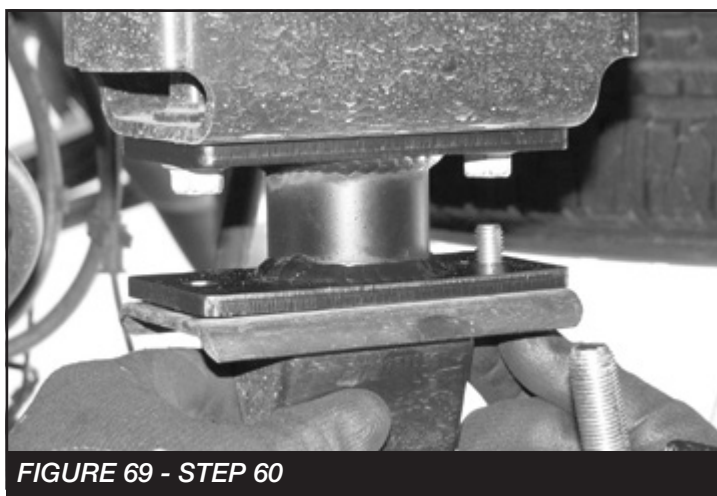


FIGURE 69 - STEP 60

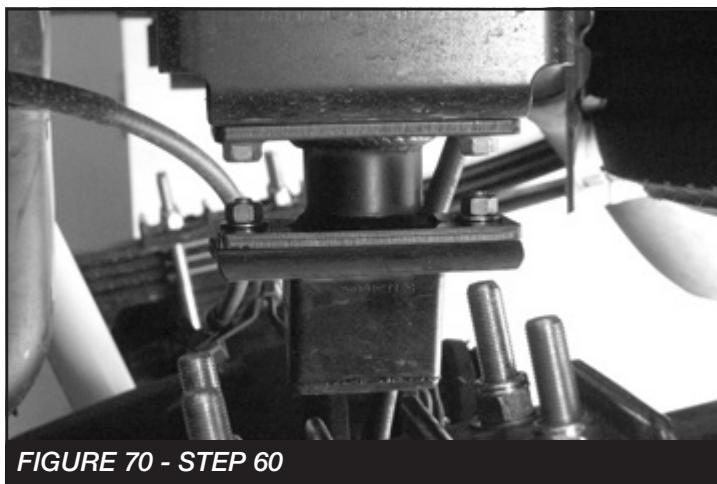


FIGURE 70 - STEP 60

61. Re-Install both front and rear inner fender liners.
62. Install tires and wheels and torque lug nuts to wheel manufacturer's specifications. Turn front tires left to right and check for appropriate tire clearance. **Note - Some oversized tires may require trimming of the front bumper & valance.**
63. Check front end alignment and set to factory specifications. Readjust headlights. Recheck all bolts for proper torque.
64. Recheck brake hoses, ABS wires and suspension parts for proper tire clearance while turning tires fully left to right.
65. Install Driver Warning Decal. Complete product registration card and mail to Fabtech in order to receive future safety and technical bulletins on this suspension.

Vehicles that will receive oversized tires should check ball joints, uniballs and all steering components every 2500-5000 miles for wear and replace as required.

RE-TORQUE ALL NUTS, BOLTS AND LUGS AFTER 50 MILES AND PERIODICALLY THEREAFTER.

For technical assistance call: **909-597-7800**

- Product Warranty and Warnings -

Fabtech provides a Limited Lifetime Warranty to the original retail purchaser who owns the vehicle, on which the product was originally installed, for defects in workmanship and materials.

The Limited Lifetime Warranty excludes the following Fabtech items; bushings, bump stops, ball joints, tie rod ends, limiting straps, cross shafts, heim joints and driveshafts. These parts are subject to wear and are not considered defective when worn. They are warranted for 60 days from the date of purchase for defects in workmanship.

Dirt Logic and Performance Coilover take apart shocks are considered a serviceable shock with a one year warranty on leakage only. Service seal kits are available separately for future maintenance. All other shocks are covered under our Limited Lifetime Warranty.

Fabtech does not warrant any product for finish, alterations, modifications and/or installation contrary to Fabtech's instructions. Alterations to the finish of the parts including but not limited to painting, powder coating, plating and/or welding will void all warranties. Some finish damage may occur to parts during shipping, which is considered normal and is not covered under warranty.

Fabtech products are not designed nor intended to be installed on vehicles used in race applications or for racing purposes or for similar activities. (A "RACE" is defined as any contest between two or more vehicles, or any contest of one or more vehicle against the clock, whether or not such contest is for a prize). This warranty does not include coverage for police or taxi vehicles, race vehicles, or vehicles used for government or commercial purposes. Also excluded from this warranty are sales outside of the United States of America.

Installation of most suspension products will raise the center of gravity of the vehicle and will cause the vehicle to handle differently than stock. It may increase the vehicle's susceptibility to a rollover, on road and off road, at all speeds. Extreme care should be taken to operate the vehicle safely at all times to prevent rollover or loss of control resulting in serious injury or death. Fabtech front end Desert Guards may impair the deployment or operation of vehicles equipped with supplemental restraining systems/air bag systems and should not be installed if the vehicle is equipped as so.

Fabtech makes every effort to ensure suspension product compatibility with all vehicles listed on the website, but due to unknown auto manufacturer's production changes and/or inconsistencies by the auto manufacturer, Fabtech cannot be responsible for 100% compatibility, including the fitment of tire and wheel sizes listed. The Tire and Wheel sizes listed in Fabtech's website are only a guideline for street driving with noted fender trimming. Fabtech is not responsible for damages to the vehicle's body or tires. Fabtech is not responsible for premature wear of factory components due to the installation of oversized tires and wheels.

Fabtech's obligation under this warranty is limited to the repair or replacement, at Fabtech option, of the defective product only. All costs of removal, installation or re-installation, freight charges, incidental or consequential damages are expressly excluded from this warranty. Fabtech is not responsible for damages and/or warranty of other vehicle parts related or non related to the installed Fabtech product. This warranty is expressly in lieu of all other warranties expressed or implied. This warranty shall not apply to any product that has been subject to accident, negligence, alteration, abuse or misuse as determined by Fabtech.

Fabtech suspension components must be installed as a complete system including shocks as shown on our website. All warranties will become void if Fabtech parts are combined and/or substituted with other aftermarket suspension products. Combination and/or substitution of other aftermarket suspension parts may cause premature wear and/or product failure resulting in an accident causing injury or death. Fabtech does not warrant products not manufactured by Fabtech.

Depending on the condition of the factory suspension components retained after the installation of a Fabtech suspension not all vehicles may have the same ride stance front to rear as described in the website. The blue color of suspension components shown in all Fabtech photographs are for display purposes only. Majority of all Fabtech components will be black specifically where noted with part numbers ending in BK.

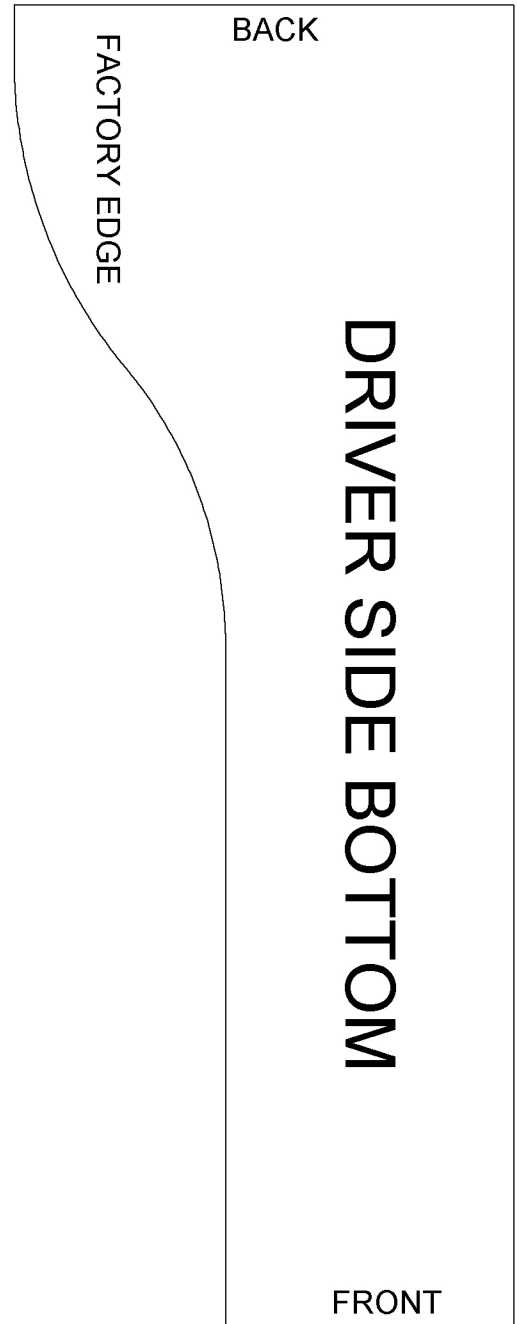
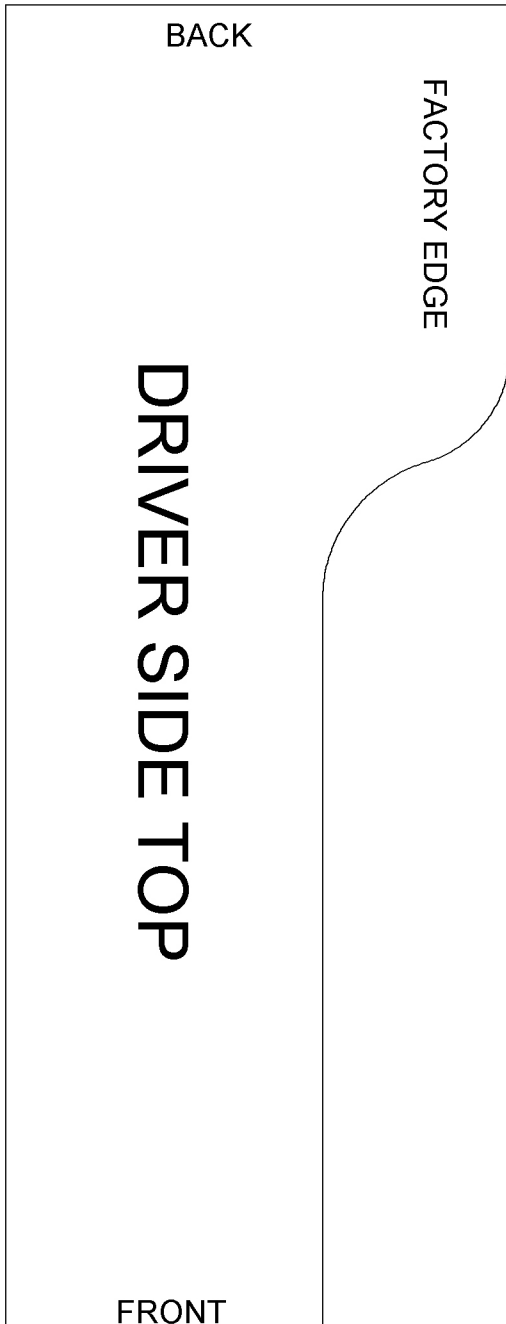
Installation of Fabtech product may void the vehicles factory warranty; it is the consumer's responsibility to check with their local vehicle's dealer for warranty disposition before the installation of the product. Some state laws may prohibit modification of suspension to a vehicle in whole or in part. It is the responsibility of the installer and consumer to consult local laws prior to the installation of any Fabtech suspension product to comply with such written laws.

It is the responsibility of the distributor and/or the retailer to review all warranties and warnings of Fabtech products with the consumer prior to purchase.

Fabtech reserves the right to super cede, discontinue, change the design, finish, part number and/or application of parts when deemed necessary without written notice. Fabtech is not responsible for misprints or typographical errors within the website or price sheet. For the most recent Product Warranty and Warnings visit our website www.fabtechmotorsports.com

4-LINK TEMPLATE

PRINT AT 100% - DO NOT SCALE TO PAGE



4-LINK TEMPLATE

PRINT AT 100% - DO NOT SCALE TO PAGE

