



INSTALLATION INSTRUCTIONS

2019-2022 DODGE RAM 2500 4WD 5" BASIC SYSTEMS

FTS23209

NOTE: TO ORDER WEARABLE REPLACEMENT COMPONENTS DO NOT USE PART NUMBERS SHOWN ON THIS INSTRUCTION SHEET. GO TO FABTECH WEBSITE AND LOOK UP WEARABLE REPLACEMENT PARTS TO FIND THE PROPER PART NUMBER TO ORDER.

Fabtech Motorsports | 4331 Eucalyptus Ave. Chino, CA 91710

Tech Line: 909-597-7800 | **Fax:** 909-597-7185 | **Web:** www.fabtechmotorsports.com

FTS23209		5" BASIC KIT W/ PERFORMANCE SHOCKS
2	FT1599-2-4	5" SWAY BAR LINK
1	FT44172	DODGE PITMAN ARM
2	FT44232BK	RADIUS ARM DROP
1	FT44237BK	5" COIL SPACER (DRIVER)
1	FT44238BK	5" COIL SPACER (PASSENGER)
2	FT44267BK	REAR SPRING SPACER
2	FT44268BK	REAR BUMP STOP SPACER
1	FT44512	TRACK BAR BRACKET (FRONT)
1	FT44513	TRACK BAR BRACKET (REAR)
1	FT44515	ESC MOUNT
1	FT44518	BUMP STOP MOUNT (DRIVER)
1	FT44519	BUMP STOP MOUNT (PASSENGER)
1	FT44520	HARDWARE SUBASSEMBLY
1	FT44522	HARDWARE KIT
2	FTS7343	PERFORMANCE SHOCK (FRONT)
2	FTS7344	PERFORMANCE SHOCK (REAR)

FTS23210		5" BASIC KIT W/ STEALTH SHOCKS
2	FT1599-2-4	5" SWAY BAR LINK
1	FT44172	DODGE PITMAN ARM
2	FT44232BK	RADIUS ARM DROP
1	FT44237BK	5" COIL SPACER (DRIVER)
1	FT44238BK	5" COIL SPACER (PASSENGER)
2	FT44267BK	REAR SPRING SPACER
2	FT44268BK	REAR BUMP STOP SPACER
1	FT44512	TRACK BAR BRACKET (FRONT)
1	FT44513	TRACK BAR BRACKET (REAR)
1	FT44515	ESC MOUNT
1	FT44518	BUMP STOP MOUNT (DRIVER)
1	FT44519	BUMP STOP MOUNT (PASSENGER)
1	FT44520	HARDWARE SUBASSEMBLY
1	FT44522	HARDWARE KIT
2	FTS6236	STEALTH SHOCK (FRONT)
2	FTS6344	STEALTH SHOCK (REAR)

FTS23211		5" BASIC KIT W/ DIRT LOGIC SHOCKS
2	FT1599-2-4	5" SWAY BAR LINK
1	FT44172	DODGE PITMAN ARM
2	FT44232BK	RADIUS ARM DROP
1	FT44237BK	5" COIL SPACER (DRIVER)
1	FT44238BK	5" COIL SPACER (PASSENGER)
2	FT44267BK	REAR SPRING SPACER
2	FT44268BK	REAR BUMP STOP SPACER
1	FT44512	TRACK BAR BRACKET (FRONT)
1	FT44513	TRACK BAR BRACKET (REAR)
1	FT44515	ESC MOUNT
1	FT44518	BUMP STOP MOUNT (DRIVER)
1	FT44519	BUMP STOP MOUNT (PASSENGER)
1	FT44520	HARDWARE SUBASSEMBLY
1	FT44522	HARDWARE KIT
2	FTS811032	DIRT LOGIC 2.25 SHOCK (FRONT)
2	FTS811042	DIRT LOGIC 2.25 SHOCK (REAR)

FT44520		HARDWARE SUBASSEMBLY
8	FT1004	SWAY BAR LINK BUSHING HALF
1	FT23209i	INSTRUCTIONS
4	FT404739	SLEEVE OD 0.62 ID 12MM L.1.48
2	FT44135	BUMP STOP MOUNT TAB
1	FT44239	WASHER 4.250 X .510 X .250
2	FT44245	BRAKE LINE EXT
2	FT44253	RADIUS ARM DROP NUT TAB
2	FT44258	1/4 NUT TAB
2	FT604	SLEEVE 1.000 X .760 X 2.600
1	FT605	SLEEVE 1.000 X .563 X 1.855
1	FT606	SLEEVE .750 X .515 X .780
1	FT70136	REAR TRACK BAR NUT TAB
1	FTAS12	STICKER FT BLUE 10X4
1	FTAS16	DRIVER WARNING DECAL
1	FTREGCARD	REGISTRATION CARD

FT44522 - HARDWARE KIT SUB		LOCATION
	BAG 1	
2	M14-2.0 C-LOCK NUT	TRACK BAR DROP BRACKET
2	M14 FLAT WASHER	
2	5/16-18 X 2-1/2 HEX BOLT G8 ZINC	BUMP STOP
4	5/16 SAE WASHER G8 ZINC	
2	5/16-18 C-LOCK NUT ZINC	
4	1/4-20 X 1 HEX BOLT G5 ZINC	BRAKE LINE EXTENSION
2	1/4-20 X 2-1/2" HEX BOLT	BUMPSTOP
10	1/4 SAE WASHER G5 ZINC	
4	1/4-20 NYLOCK NUT ZINC	
2	1/2-13 X 1-1/4 HEX BOLT G8 ZNC	
6	1/2 SAE WASHER G8 ZINC	
2	1/2-13 X 4" HEX HEAD BOLT	COIL SPACER
2	1/2-13 C-LOCK NUT ZINC	
4	7/16-14 X 1-1/4 HEX BOLT G8 ZC	COIL SPACER
8	7/16 SAE WASHER G8 ZINC	
4	7/16-14 C-LOCK NUT ZINC	
1	THREAD LOCKING COMPOUND	
	BAG 2	
12	1/2-13 X 1-1/4 HEX BOLT G8 ZNC	RADIUS ARM POCKET
22	1/2 SAE WASHER G8 ZINC	
9	1/2-13 C-LOCK NUT ZINC	
1	1/2-13 X 2-1/4 HEX BOLT G8 ZNC	
2	M18-2.5 X 120MM HEX BOLT	RADIUS ARM POCKET
4	M18 WASHERS	
2	NUT C-LOCK 18MM G10.9 ZINC	
8	7/16-14 X 1-1/4 HEX BOLT G8 ZC	REAR SPACER/BUMPSTOP
16	7/16 SAE WASHER G8 ZINC	
8	7/16-14 C-LOCK NUT ZINC	
1	9/16-18 X 3-3/4 HEX BOLT G8 ZC	REAR TRACK BAR
2	9/16 SAE WASHER G8 ZINC	
1	9/16" -18 C LOCK NUT	
8	1/2 USS WASHER G5 ZINC	SWAY BAR LINK
4	M12-1.75 X 70MM HEX BOLT G10.9	
4	NUT 12-1.75 NYLOK 10.9 Z1	
1	#10 TEK SCREW	

- TOOL LIST -

Required Tools (Not Included)

Basic Hand Tools
Floor Jack
Jack Stands
Assorted Metric and S.A.E sockets, and Allen wrenches
Torque Wrench
Die Grinder w/ Cutoff Wheel or Sawzall

- PRE-INSTALLATION NOTES -

For technical assistance call: **909-597-7800** or e-mail: **info@fabtechmotorsports.com**

READ THIS BEFORE YOU BEGIN INSTALLATION -

Check all parts to the parts list above before beginning installation. If any parts are missing contact Fabtech at 909-597-7800 and a replacement part will be sent to you immediately.

Read all instructions thoroughly from start to finish before beginning the installation. If these instructions are not properly followed severe frame, driveline and / or suspension damage may occur.

Check your local city and state laws prior to the installation of this system for legality. Do not install if not legal in your area.

Prior to the installation of this suspension system perform a front end alignment and record. Do not install this system if the vehicle alignment is not within factory specifications. Check for frame and suspension damage prior to installation.

The installation of this suspension system should be performed by two professional mechanics.

This suspension must be installed with Fabtech shock absorbers.

Installation of all fasteners requires the use of provided thread locking compound with proper torque values as indicated throughout the installation. Apply thread locking compound upon the final torque of the fastener.

WARNING- Installation of this system will alter the center of gravity of the vehicle and may increase roll over as compared to stock.

Vehicles that receive oversized tires should check ball joints, uniballs, tie rods ends, pitman arm and idler arm every 2500-5000 miles for wear and replace as needed.

Verify differential fluid is at manufactures recommended level prior to kit installation. Installation of the kit will reposition the differential and the fill plug hole may be in a different position. (For example, if the manufacture recommends 3 quarts of fluid, make sure the diff has 3 quarts of fluid). Check your specific manual for correct amount of fluid.

FOOTNOTES -

- Will not fit models with Factory AutoRide shocks.
- Will not fit all wheel drive models.
- Cannot use OEM wheel and tire.
- Does not fit standard cab.

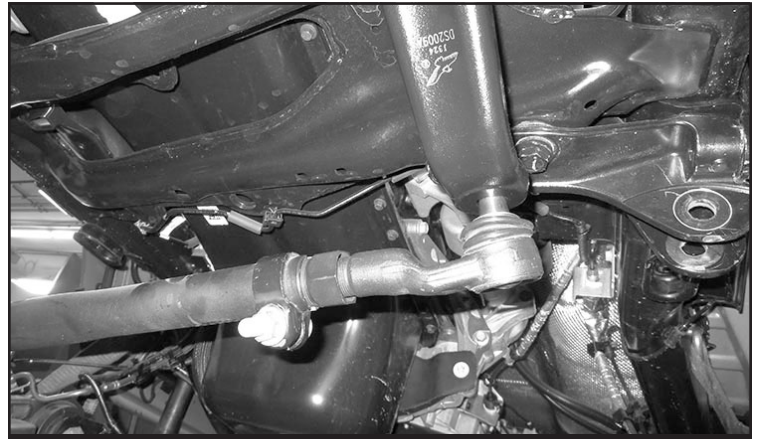
- INSTRUCTIONS -

FRONT SUSPENSION

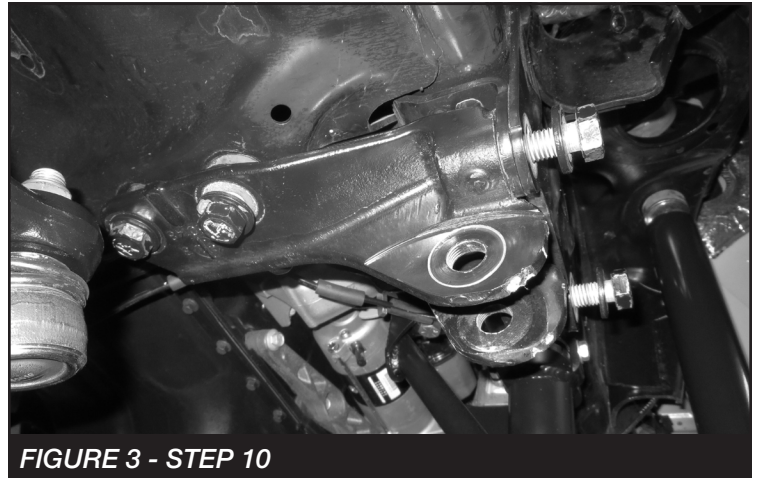
1. Disconnect the negative terminal on the battery. Jack up the front end of the truck and support the frame rails with jack stands. **NEVER WORK UNDER AN UNSUPPORTED VEHICLE!** Remove the front tires.
2. Remove both the Driver and Passenger side inner fender liners. Save all hardware for re-installation.
3. With the front axle supported, remove and discard the front shocks. Save the lower hardware. Disconnect the brake line bracket from the axle.
4. Disconnect factory sway bar links from the sway bar. Save all hardware.
5. Lower the front axle. Remove factory coil spring and rubber isolator. Save the both for later use.
6. Disconnect the draglink from the pitman arm. Then, remove and discard the factory pitman arm. Save hardware.
7. Locate the new FT44172 Fabtech pitman arm and install. Do not reconnect the factory drag link at this time. Reinstall the factory lock washer plus thread locker. Torque to 220ft-lbs.
8. Unthread the end from the draglink. Using a cut-off wheel, remove the non threaded hex end. **SEE FIGURE 1**



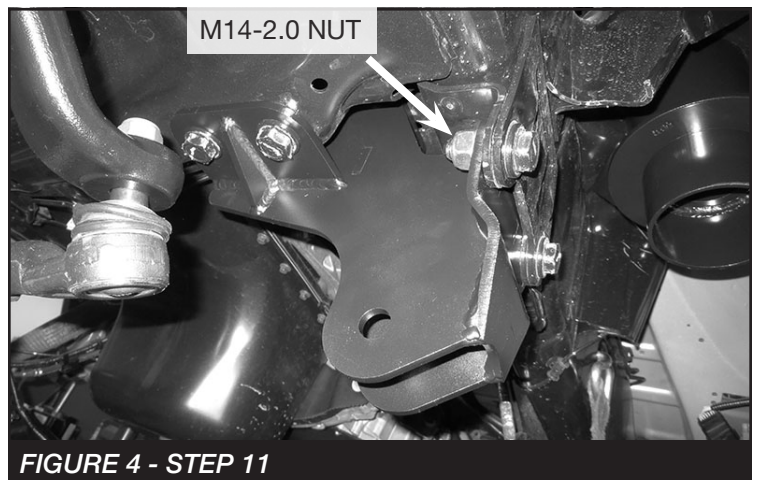
9. Reinstall the end all the way into the draglink, then install the to the pitman arm from the bottom side using the factory nut. Torque to 83 ft-lbs. **SEE FIGURE 2**



10. Disconnect the track bar from the track bar bracket, save hardware. Remove the five bolts attaching the bracket to the frame. Discard the bracket, save the hardware. **SEE FIGURE 3**



11. Install FT44513 (Track Bar Bracket) using the factory bolts. Note: Use the supplied (2)M14-2.0 nuts and washers on the outer most factory bolts. Torque to 103 ft-lbs. **SEE FIGURES 4-5**



M14-2.0
NUT

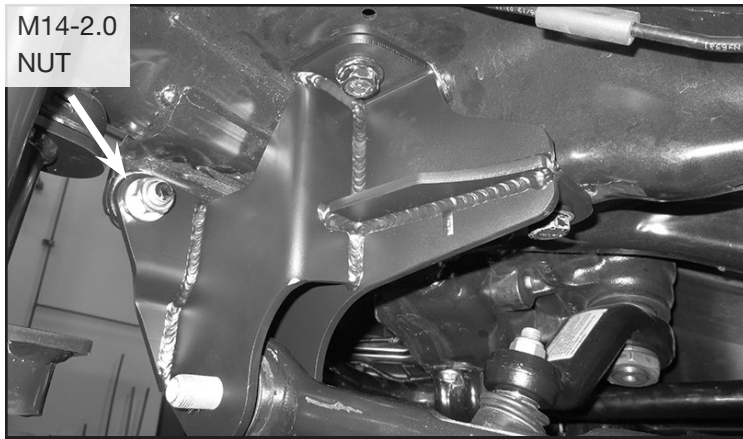


FIGURE 5 - STEP 11

12. Locate the Electronic Stability Control unit on top of the driver side upper coil spring mount. Remove and save the factory bolt on the back side of the unit. **SEE FIGURE 6**

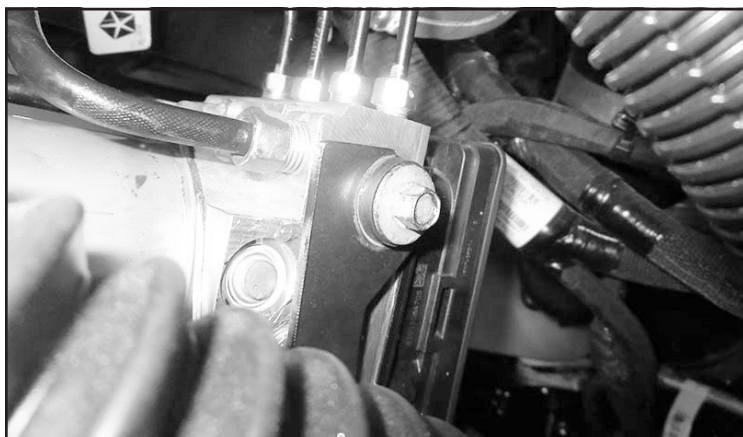


FIGURE 6 - STEP 12

13. Disconnect the harness plug from the unit. Then, slide the unit forward to remove from the grommets. Remove and save the three rubber grommets. **SEE FIGURES 7-8**



FIGURE 7 - STEP 13



FIGURE 8 - STEP 13

14. Prop the unit up enough to be able to reach underneath it. Be careful not to put too much strain on the hoses. Using a die grinder/cut off wheel. Cut the factory bracket out from the top of the coil spring mount. Sand all of the sharp edges. **NOTE: Be careful not to damage any hoses or cables. SEE FIGURES 9-11**

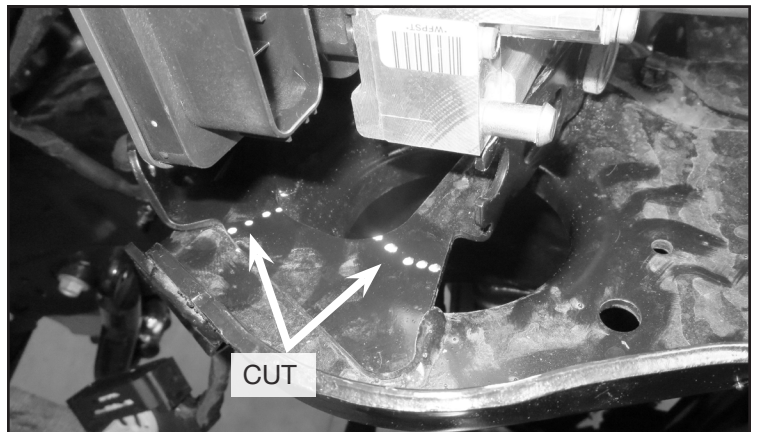


FIGURE 9 - STEP 14



FIGURE 10 - STEP 14

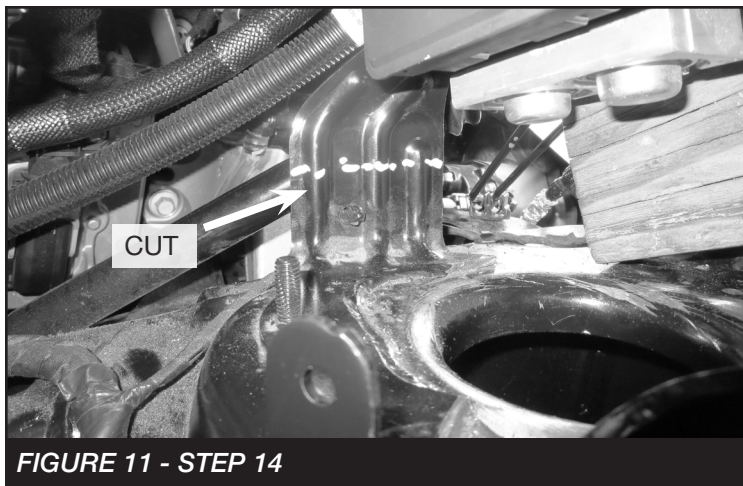


FIGURE 11 - STEP 14

15. Install the three grommets onto the FT44515 (ESC Mount) **SEE FIGURE 12**. Install the new ESC mount to the top of the coil spring mount while inserting a supplied 1/2" x 4" bolt and washer. **SEE FIGURE 13**

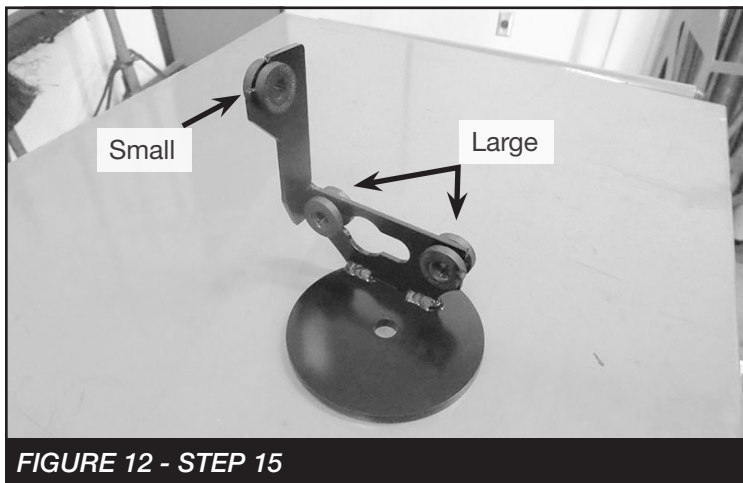


FIGURE 12 - STEP 15



FIGURE 13 - STEP 15

16. Install the ESC module to the new bracket by pushing in into the 2 lower grommets and the factory bolt on the back side. Reconnect the wire harness. **SEE FIGURE 14**



FIGURE 14 - STEP 16

17. Locate the FT44237BK coil spacer. Install the coil spacer into the top of the factory coil bucket passing the 1/2" bolt though the center hole in the Fabtech coil spacer. Attach a flat washer and locking nut to the 1/2" bolt. Leave loose at this time. **SEE FIGURE 15**



FIGURE 15 - STEP 17

18. Install a 7/16"-14 x 1-1/4" bolt, nut and washer through the coil bucket in the locating tab on the Fabtech spacer. Torque the 7/16" bolt to 59 ft-lbs and the 1/2" bolt to 90 ft-lbs. **SEE FIGURE 16**



FIGURE 16 - STEP 18

19. Using the support tab on the coil spacer as a drill guide, drill a 7/16" hole through the factory coil bucket. **SEE FIGURE 17**



FIGURE 17 - STEP 19

20. Install a 7/16"-14 x 1-1/4" bolt, nut and washer through the coil bucket and torque the 7/16" bolt to 59 ft-lbs. **SEE FIGURE 18**



FIGURE 18 - STEP 20

21. Repeat steps on the passenger side using FT44238BK (Pass Coil Spacer) and FT44239 (Large Washer Plate) on the top of the upper coil spring mount. **SEE FIGURE 19**



FIGURE 19 - STEP 21

22. Remove and save the factory rubber bump stop. **SEE FIGURE 20.** Insert the factory rubber bumpstop into the new Fabtech bumpstop bracket (FT44518). Using a 1/4" drill, drill a hole through the factory rubber bumpstop using the new bracket as a guide. Then install the supplied 1/4" X 2-1/2" hardware. Torque to 14 ft-lbs. **SEE FIGURE 21**



FIGURE 20 - STEP 22



FIGURE 21 - STEP 22

23. Using a die grinder, grind out the stamped in tabs on the inside of the bump stop housing. **SEE FIGURES 22-23**

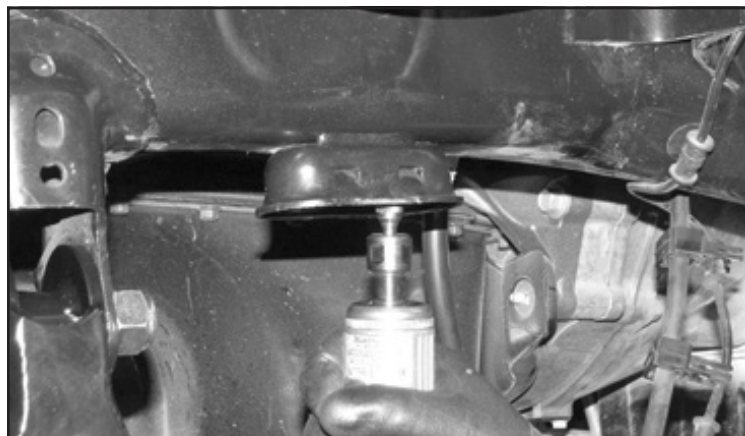


FIGURE 22 - STEP 23

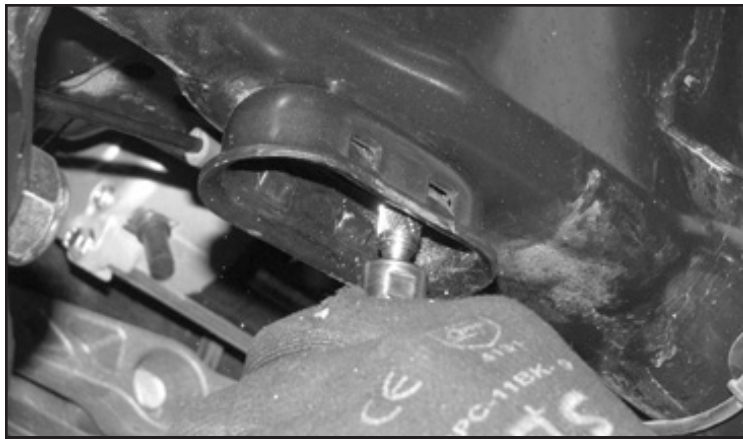


FIGURE 23 - STEP 23

24. Using a 1/2" drill bit, drill out the hole in the factory crossmember in-line with the factory bump stop mount. **SEE FIGURE 24**

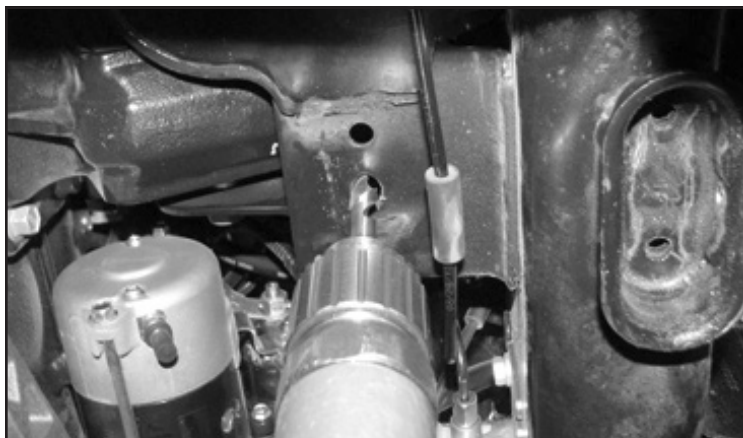


FIGURE 24 - STEP 24

25. Slide the bump stop into the factory bump stop mount. Using a 1/2"-13 x 1-1/4" bolt, flat washer and the FT44135 (nut tab), bolt the bump stop to the crossmember. Torque the 1/2" bolt to 90 ft-lbs. **SEE FIGURES 25-26**



FIGURE 25 - STEP 25



FIGURE 26 - STEP 25

26. Using the outer tab on the bump stop as a drill guide, drill a 5/16" hole all the way through the factory bump stop mount. **SEE FIGURE 27**

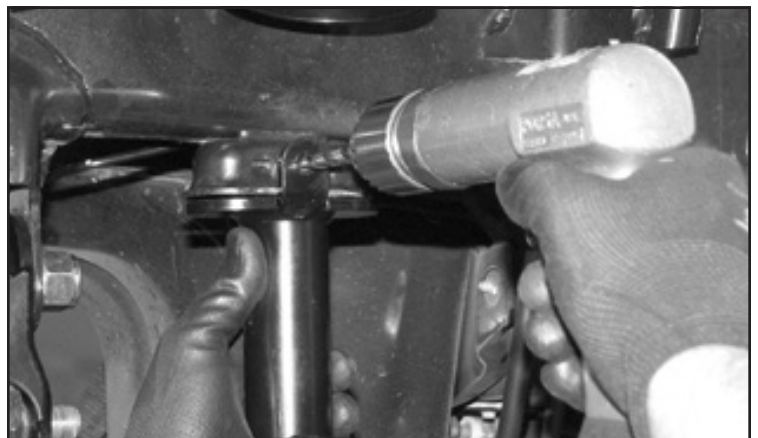


FIGURE 27 - STEP 26

27. Locate a 5/16" x 2-1/2" bolt, nut and washers. Using this bolt, secure the bump stop to the factory bump stop mount and torque to 29 ft-lbs. **SEE FIGURE 28**



FIGURE 28 - STEP 27

28. Repeat steps on the passenger side using FT44519 (Pass bump stop bracket)

29. Secure the front diff. Remove the factory driver and passenger side Radius arm. Retain Hardware. **SEE FIGURE 29**

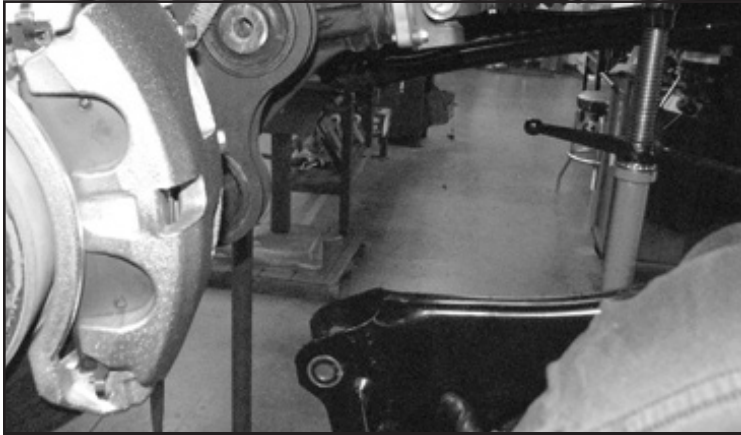


FIGURE 29 - STEP 29

30. Remove the factory crossmember and skid plate that is mounted between the factory radius arm pockets. Retain Hardware. **SEE FIGURE 30**



FIGURE 30 - STEP 30

31. Trim 1/2" off both driver and passenger ends of the crossmember leaving a 1/4" border perpendicular to the bolt holes. This will be done to add clearance for the Fabtech radius arm brackets. **SEE FIGURES 31-32**

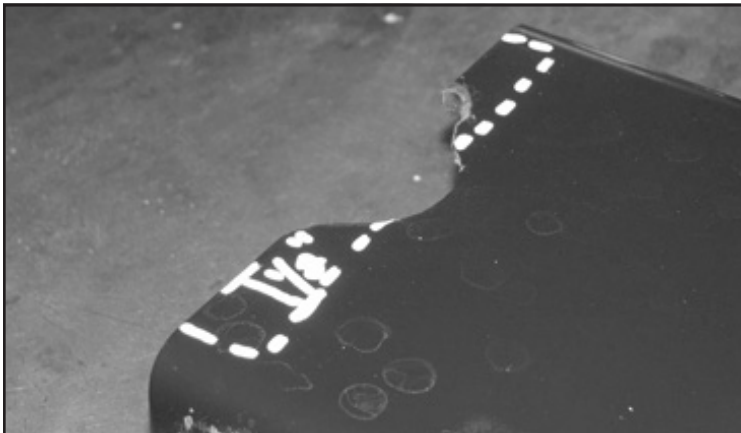


FIGURE 31 - STEP 31

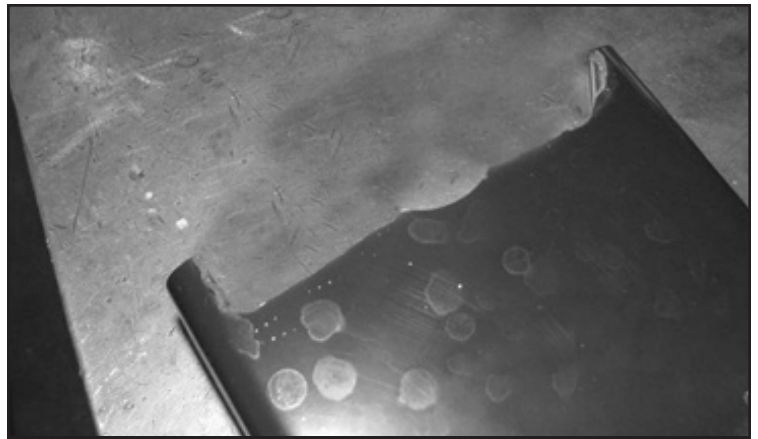


FIGURE 32 - STEP 31

32. Reinstall the factory crossmember and torque to 200 ft-lbs.
33. Locate the Fabtech FT44232BK Radius arm drop bracket and the drill template in the instructions (**Page 18**). Cut out the template.
34. Line up the drill template with the factory Radius arm bracket and mark the two holes around the radius arm pivot bolt. **SEE FIGURE 33**

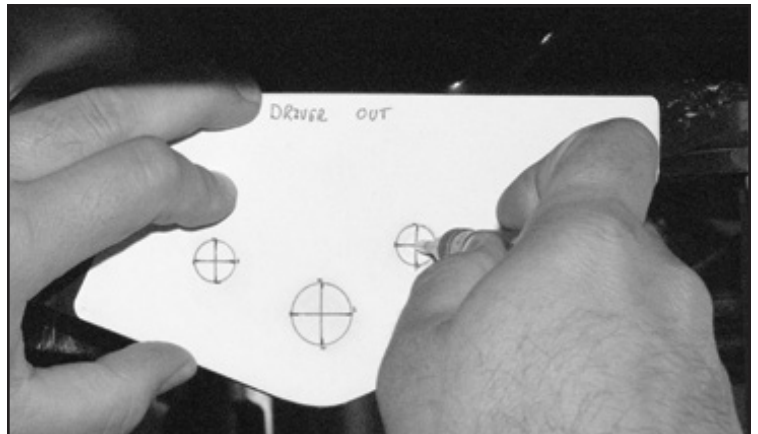


FIGURE 33 - STEP 34

35. Using a 1/2" drill bit, drill all the way through both sides of the factory radius arm mount. **SEE FIGURES 34-35**



FIGURE 34 - STEP 35

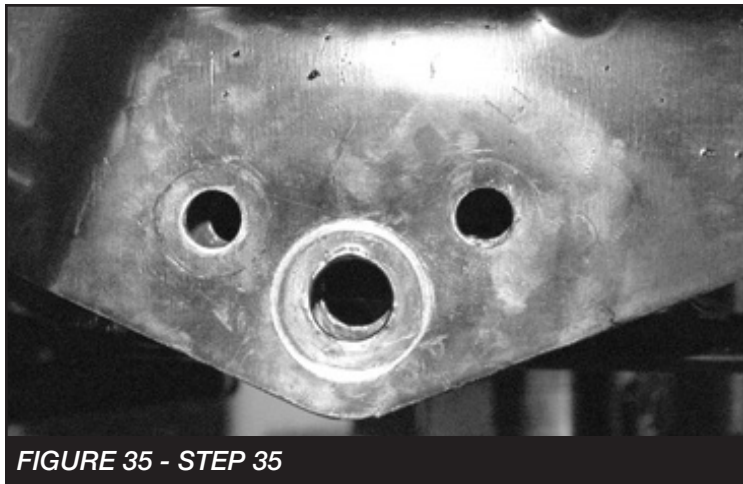


FIGURE 35 - STEP 35

Repeat steps on the passenger side.

36. Slide the Fabtech radius arm mount into the factory pocket with the frame tab facing the front of the truck.
SEE FIGURE 36

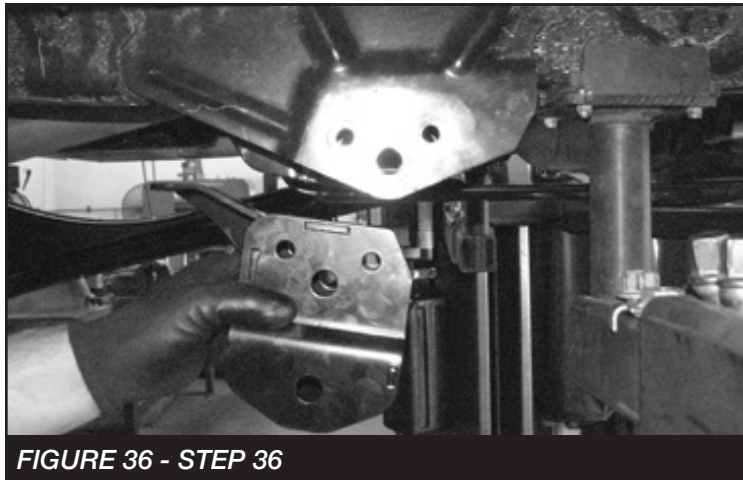


FIGURE 36 - STEP 36

37. Locate four 1/2"-13 x 1-1/4" bolts, nuts and washers. Use these bolts to mount the radius arm drop bracket to the factory bracket. Leave loose at this time.
SEE FIGURE 37



FIGURE 37 - STEP 37

38. Locate the M18-2.5 x 120MM bolt, nut and washers. Pass the 18mm bolt through the factory pivot hole into the FT604 sleeve. Torque the 18mm bolt to 200 ft-lbs and the four 1/2" bolts to 106 ft-lbs. **SEE FIGURES 38-39**



FIGURE 38 - STEP 38

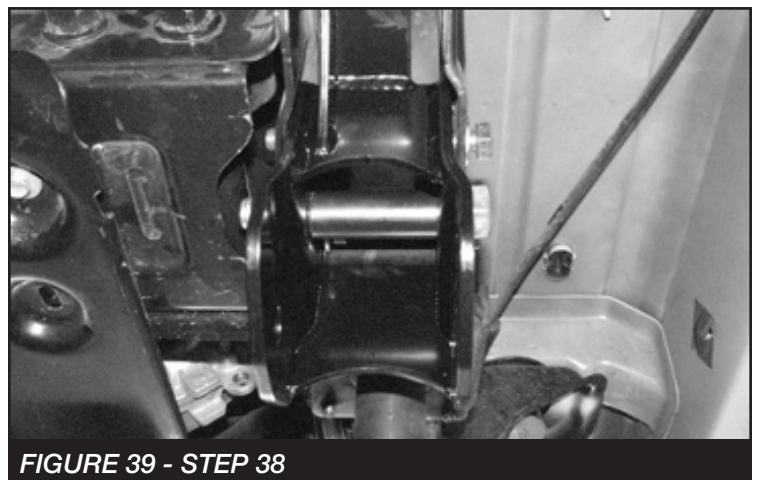


FIGURE 39 - STEP 38

39. Using the Fabtech the radius arm drop bracket as a drill guide, drill a 1/2" hole through the bottom of the frame.
SEE FIGURE 40

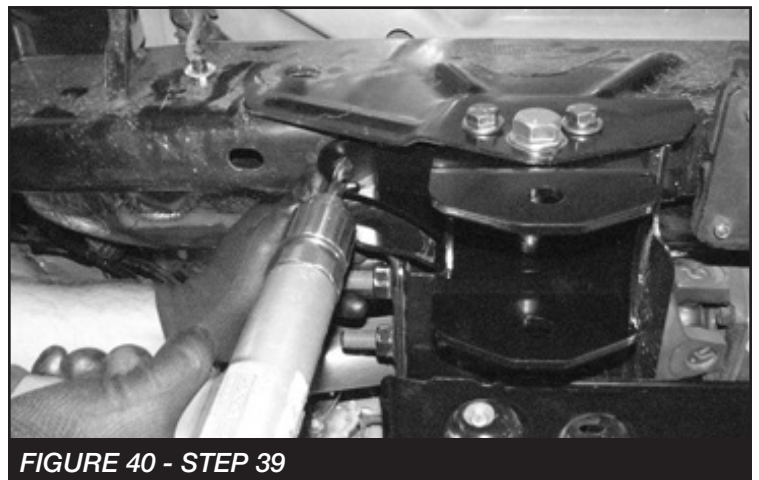


FIGURE 40 - STEP 39

40. Locate a 1/2"-13 x 1-1/4" bolt and the FT44253 nut tab. Pass the nut tab through the hole in the frame forward of the radius arm drop bracket. Connect the bolt and the nut tab through the radius arm drop bracket and the frame. Torque to 106 ft-lbs. **SEE FIGURES 44-45**



FIGURE 41 - STEP 40



FIGURE 42 - STEP 40

41. Repeat steps on the Passenger side.
42. Reinstall the factory radius arms with the factory hardware and torque to 200 ft-lbs. **SEE FIGURES 43-45**



FIGURE 43 - STEP 42



FIGURE 44 - STEP 42

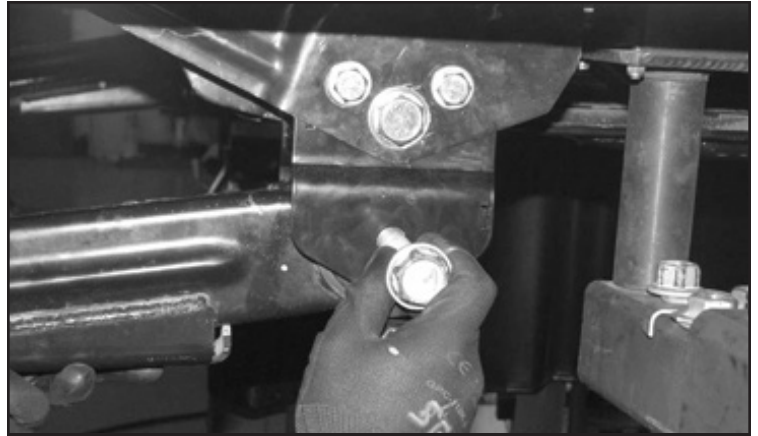


FIGURE 45 - STEP 42

43. Locate the factory coil spring isolator and slide it over the Fabtech coil spacer. Install the factory coil spring onto the Fabtech coil spacer and into the lower perch on the axle.
44. Locate the FT44245 (Brake line extension bracket), FT44258 (nut tab) and 1/4" x 1" bolts, washers and nut. Attach the brake line extension to the axle using one bolt and the nut tab. Attach the factory brake line bracket to the Fabtech extension using a 1/4" X 1" bolt, nut and washers. Torque to 10 ft-lbs. Repeat this step on the passenger side. **SEE FIGURES 46**

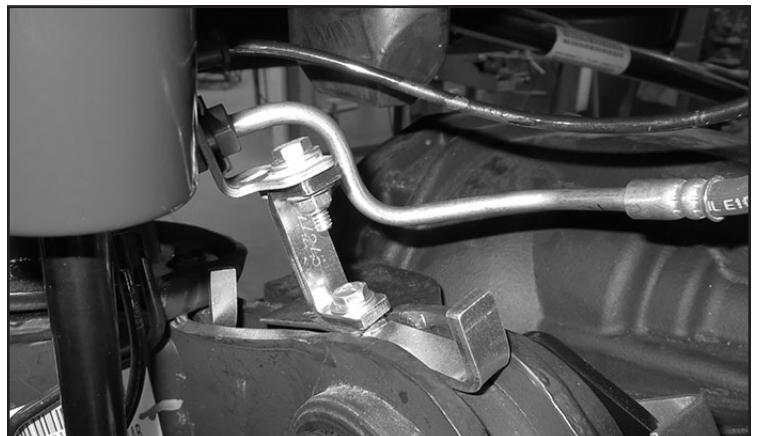


FIGURE 46 - STEP 44

45. Locate the FTS7343 Performance shock, FTS6236 (Stealth Shock) or the FTS811032 Dirt Logic shock and install into the factory shock mounts. Torque the upper mount to 14 ft-lbs and the lower 37 ft-lbs. **SEE FIGURES 47-48**



FIGURE 47 - STEP 45

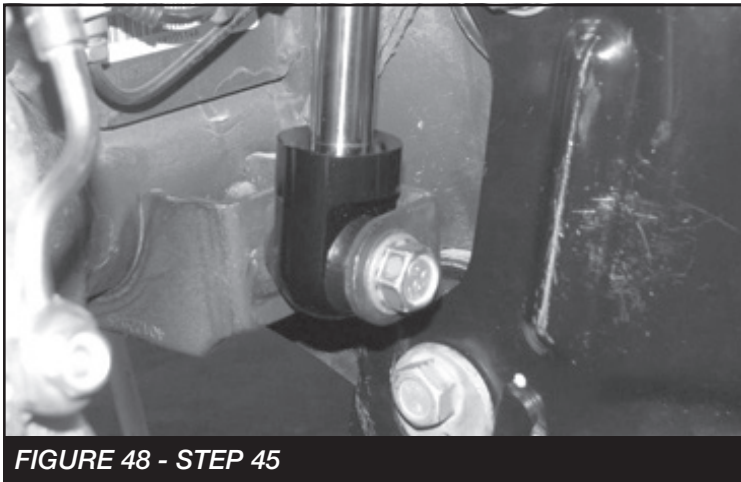


FIGURE 48 - STEP 45

46. Reconnect the factory sway bar. Torque to 29 ft-lbs. **SEE FIGURE 49**

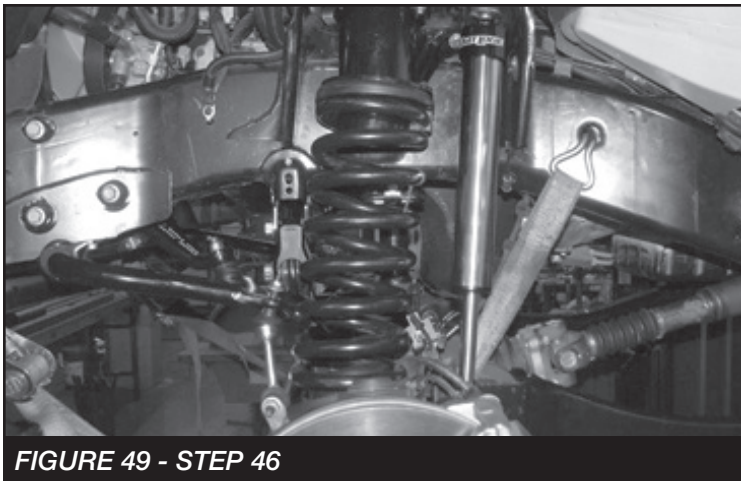


FIGURE 49 - STEP 46

47. Reinstall the factory front inner fender liners using the original hardware.

REAR SUSPENSION

48. Jack up the rear end of the vehicle and support the frame rails with jack stands and remove wheels and tires. Remove the rear driver and passenger inner fender liners.
49. Disassemble the rear track bar from the axle side and save hardware for re-installation. Remove and discard the factory sway bar end links and shocks, save lower shock hardware for re-installation. Slowly lower the rear axle and remove and save the rear factory springs and rubber isolators for re-installation. Remove bump stops and hardware from the vehicles frame and save for re-installation.
50. Locate the rear side of the driver side bump stop pad. Remove the factory brake line bracket. Measure 2.50" from the left inside edge and 2" from the bottom edge and mark. Use a punch then drill using a 1/2" drill bit. **NOTE: ONLY DRILL THROUGH BUMP STOP PAD, DRILLING TO FAR WILL RESULT IN DAMAGE TO AXEL TUBE. SEE FIGURES 50-51**

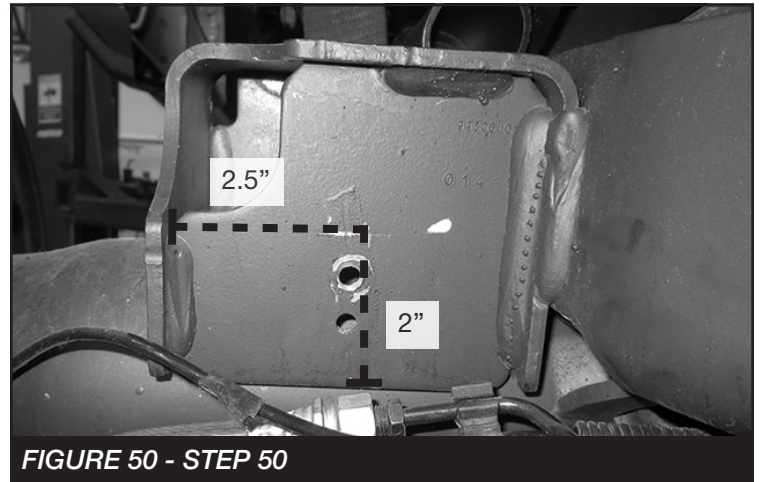


FIGURE 50 - STEP 50



FIGURE 51 - STEP 50

51. Install FT44513 (Rear track bar bracket) using the 1/2" x 1-1/4" bolt, washer and FT70136 (Nutt tab) at the bumpstop location and the factory hardware to mount the new bracket to the factory mount. Using the inside hole on the new bracket as a guide. Use a punch to mark then remove the factory bolt and drill a 1/2" hole into the side of the factory track bar axle mount. **SEE FIGURES 52-53**



FIGURE 52 - STEP 51



FIGURE 53 - STEP 51

52. Install a 1/2" X 2-1/4" bolt, washers and c-lock nut through the factory mount and new bracket. **NOTE: Install FT606 (sleeve) between the mount and bracket as you install the 1/2" hardware.** Reinstall the factory bolt with the supplied FT605 (Sleeve) at the factory location. Torque all hardware to 106 ft-lbs. **SEE FIGURE 54-55**



FIGURE 54 - STEP 52

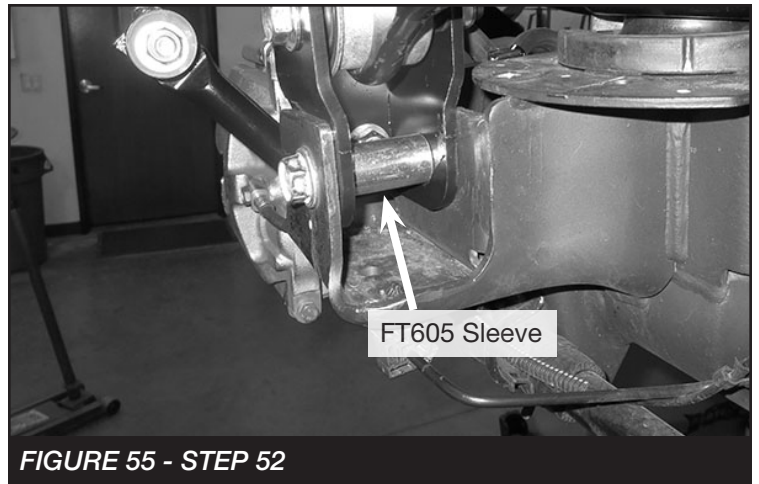


FIGURE 55 - STEP 52

53. Install the FT44268BK (Bumpstop spacer) with the factory bolts that were removed during disassembly. Then, install the factory bump stop onto the spacer bracket using the supplied 7/16" X 1-1/4" hardware. Torque to 58 ft-lbs. **SEE FIGURE 56**

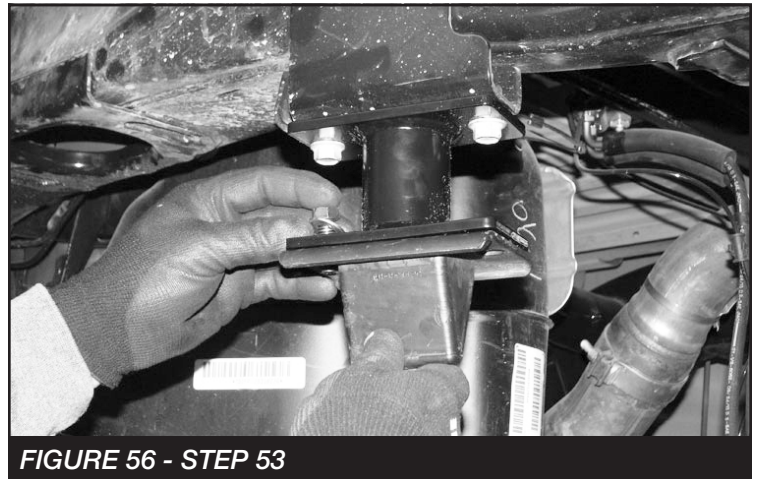


FIGURE 56 - STEP 53

54. Drill out the existing holes located on the factory spring perches to 7/16". **SEE FIGURE 57**

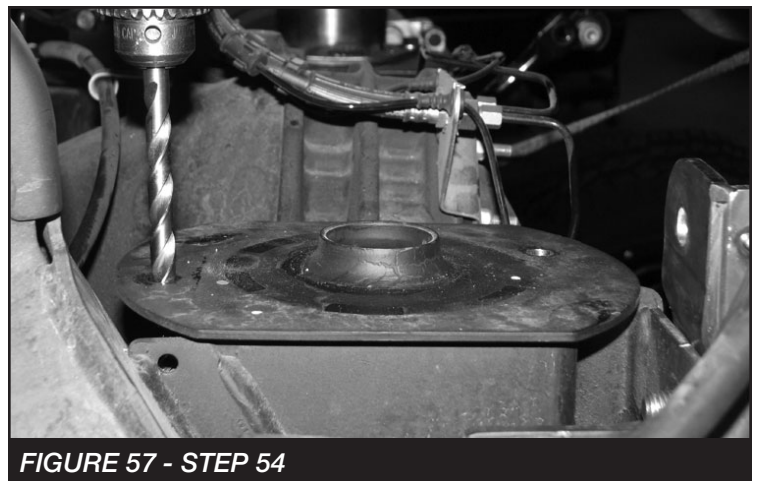


FIGURE 57 - STEP 54

55. Locate the FT44267BK rear spring spacers and install them with the supplied 7/16"-14 x 1-1/4" bolt, nuts and washers. Torque to 83 ft-lbs. **SEE FIGURE 58-59**



FIGURE 58 - STEP 55

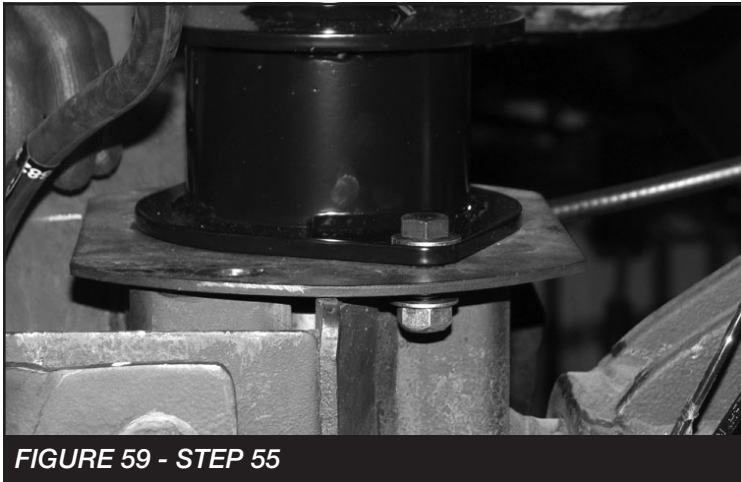


FIGURE 59 - STEP 55

56. Re-install the factory coil springs and rubber isolators. **SEE FIGURE 60**



FIGURE 60 - STEP 56

57. Install the rear track bar into the new location using the supplied 9/16"-18 x 3-1/2" bolt, nut and washers. Torque to 121 ft-lbs. **SEE FIGURE 61**



FIGURE 61 - STEP 57

58. Install the FT1004 (Bushings) and FT404739 (Sleeves) into the FT1599-2-4 (5" zinc sway bar links). **SEE FIGURES 62-63**



FIGURE 62 - STEP 58



FIGURE 63 - STEP 58

59. Install the new end links with the supplied M12-1.75 x 70mm bolts, Nylok nuts and washers and torque to 100 ft-lbs. **SEE FIGURES 64-65**

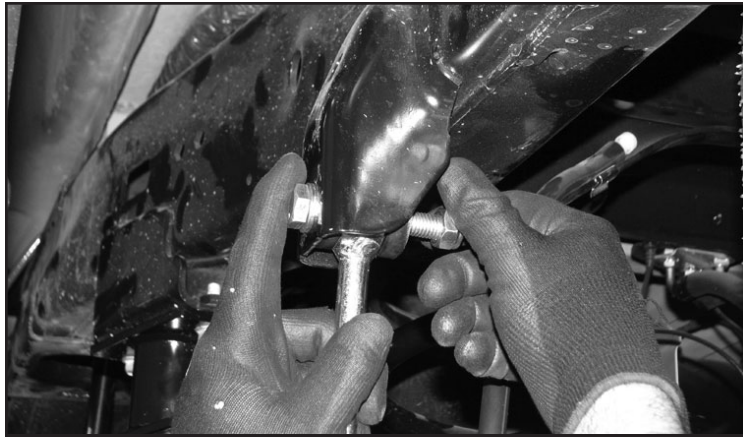


FIGURE 64 - STEP 59



FIGURE 65 - STEP 59

60. Install the shocks with the provided bushings, sleeves and the factory lower bolt. Torque to 65 ft-lbs. **SEE FIGURES 66-67** Part numbers are as followed:

- FTS7344 - Performance Shock
- FTS6344 - Stealth Shock
- FTS811042 - Dirt Logic Shock



FIGURE 66 - STEP 60



FIGURE 67 - STEP 60

61. Re-Install both inner fender liners.
62. Install tires and wheels and torque lug nuts to wheel manufacturer's specifications. Turn front tires left to right and check for appropriate tire clearance. **Note - Some oversized tires may require trimming of the front bumper & valance.**
63. Check front end alignment and set to factory specifications. Readjust headlights.
64. Recheck all bolts for proper torque.
65. Recheck brake hoses, ABS wires and suspension parts for proper tire clearance while turning tires fully left to right.
66. Check the fluid in the front and rear differential and fill if needed with factory specification differential oil. **Note - some differentials may expel fluid after filling and driving. This can be normal in resetting the fluid level with the new position of the differential/s.**
67. Install Driver Warning Decal. Complete product registration card and mail to Fabtech in order to receive future safety and technical bulletins on this suspension.

Vehicles that will receive oversized tires should check ball joints, uniballs and all steering components every 2500-5000 miles for wear and replace as required.

RETORQUE ALL NUTS, BOLTS AND LUGS AFTER 50 MILES AND PERIODICALLY THEREAFTER.

For technical assistance call: **909-597-7800**

- Product Warranty and Warnings -

Fabtech provides a Limited Lifetime Warranty to the original retail purchaser who owns the vehicle, on which the product was originally installed, for defects in workmanship and materials.

The Limited Lifetime Warranty excludes the following Fabtech items; bushings, bump stops, ball joints, tie rod ends, limiting straps, cross shafts, heim joints and driveshafts. These parts are subject to wear and are not considered defective when worn. They are warranted for 60 days from the date of purchase for defects in workmanship.

Dirt Logic and Performance Coilover take apart shocks are considered a serviceable shock with a one year warranty on leakage only. Service seal kits are available separately for future maintenance. All other shocks are covered under our Limited Lifetime Warranty.

Fabtech does not warrant any product for finish, alterations, modifications and/or installation contrary to Fabtech's instructions. Alterations to the finish of the parts including but not limited to painting, powder coating, plating and/or welding will void all warranties. Some finish damage may occur to parts during shipping, which is considered normal and is not covered under warranty.

Fabtech products are not designed nor intended to be installed on vehicles used in race applications or for racing purposes or for similar activities. (A "RACE" is defined as any contest between two or more vehicles, or any contest of one or more vehicle against the clock, whether or not such contest is for a prize). This warranty does not include coverage for police or taxi vehicles, race vehicles, or vehicles used for government or commercial purposes. Also excluded from this warranty are sales outside of the United States of America.

Installation of most suspension products will raise the center of gravity of the vehicle and will cause the vehicle to handle differently than stock. It may increase the vehicle's susceptibility to a rollover, on road and off road, at all speeds. Extreme care should be taken to operate the vehicle safely at all times to prevent rollover or loss of control resulting in serious injury or death. Fabtech front end Desert Guards may impair the deployment or operation of vehicles equipped with supplemental restraining systems/air bag systems and should not be installed if the vehicle is equipped as so.

Fabtech makes every effort to ensure suspension product compatibility with all vehicles listed on the website, but due to unknown auto manufacturer's production changes and/or inconsistencies by the auto manufacturer, Fabtech cannot be responsible for 100% compatibility, including the fitment of tire and wheel sizes listed. The Tire and Wheel sizes listed in Fabtech's website are only a guideline for street driving with noted fender trimming. Fabtech is not responsible for damages to the vehicle's body or tires. Fabtech is not responsible for premature wear of factory components due to the installation of oversized tires and wheels.

Fabtech's obligation under this warranty is limited to the repair or replacement, at Fabtech option, of the defective product only. All costs of removal, installation or re-installation, freight charges, incidental or consequential damages are expressly excluded from this warranty. Fabtech is not responsible for damages and/or warranty of other vehicle parts related or non related to the installed Fabtech product. This warranty is expressly in lieu of all other warranties expressed or implied. This warranty shall not apply to any product that has been subject to accident, negligence, alteration, abuse or misuse as determined by Fabtech.

Fabtech suspension components must be installed as a complete system including shocks as shown on our website. All warranties will become void if Fabtech parts are combined and/or substituted with other aftermarket suspension products. Combination and/or substitution of other aftermarket suspension parts may cause premature wear and/or product failure resulting in an accident causing injury or death. Fabtech does not warrant products not manufactured by Fabtech.

Depending on the condition of the factory suspension components retained after the installation of a Fabtech suspension not all vehicles may have the same ride stance front to rear as described in the website. The blue color of suspension components shown in all Fabtech photographs are for display purposes only. Majority of all Fabtech components will be black specifically where noted with part numbers ending in BK.

Installation of Fabtech product may void the vehicles factory warranty; it is the consumer's responsibility to check with their local vehicle's dealer for warranty disposition before the installation of the product. Some state laws may prohibit modification of suspension to a vehicle in whole or in part. It is the responsibility of the installer and consumer to consult local laws prior to the installation of any Fabtech suspension product to comply with such written laws.

It is the responsibility of the distributor and/or the retailer to review all warranties and warnings of Fabtech products with the consumer prior to purchase.

Fabtech reserves the right to super cede, discontinue, change the design, finish, part number and/or application of parts when deemed necessary without written notice. Fabtech is not responsible for misprints or typographical errors within the website or price sheet. For the most recent Product Warranty and Warnings visit our website www.fabtechmotorsports.com

FT44232 - TEMPLATE

PRINT AT 100% - DO NOT SCALE TO PAGE

