



4331 EUCALYPTUS AVE. ~~ CHINO, CA 91710
909-597-7800 Fax 909-597-7185

Installation Instructions

5" COILOVER CONVERSION

FTS24087

2007-15 JEEP JK

PARTS LIST:

	FTS24087BK	5" JK CO Hoop BX
QTY	Part #	Description
1	FT50349BK	Shock Hoop Driver
1	FT50350BK	Shock Hoop Pass
1	FT50347BK	Lower Mount Driv
1	FT50348BK	Lower Mount Pass
2	FT50378BK	Axle Strap Bracket
2	FT50376	Coilover Hoop Nut Tab
1	FT50377	Hardware Sub-Assembly

	FTS24088BK	5" JK Coilovers 2.5 BX
QTY	Part #	Description
2	FT820192	Coilover w/Resi
2	FT86004	Hardware Kit
2	FTS89904	Resi Mounting Kit
2	FT83019i	Instructions

	FT50377	Hardware Sub-Assembly
QTY	Part #	Description
14	50131251081	1/2"-13 x 1 1/4" Hex Bolt
6	50132751081	1/2"-13 x 2 3/4" Hex Bolt
1	50134001081	1/2"-13 x 4" Hex Bolt
19	50130004152	1/2"-13 C-Lock Nut
1	FT164	Sleeve
39	50000005081	1/2" SAE Flat Washer
1	FTLOCK	Thread Lock
1	FTREGCARD	Registration Card
1	FTAS16	Decal
1	FTAS12	Sticker
2	FT24087i	Instructions

TOOL LIST:

- Floor Jack
- Jack Stands
- Assorted Metric & S.A.E. Wrenches & Sockets
- Die Grinder With Cutoff Wheel, Sanding Disc, Barrel Sander, And Scotch Brite Pad
- Reciprocating Saw With Blades
- Drill With 1/4", 7/16", 1/2" & 1" Drill Bits Or 1" Hole Saw
- Semi Flat Black Paint



4331 EUCALYPTUS AVE. ~~ CHINO, CA 91710
909-597-7800 Fax 909-597-7185

Installation Instructions

5" COILOVER CONVERSION

FTS24087

2007-15 JEEP JK

CHECK ALL PARTS INCLUDED IN THIS KIT TO THE PARTS LIST ABOVE BEFORE BEGINNING INSTALLATION OF THE KIT. IF ANY PIECES ARE MISSING, CONTACT FABTECH AT 909-597-7800

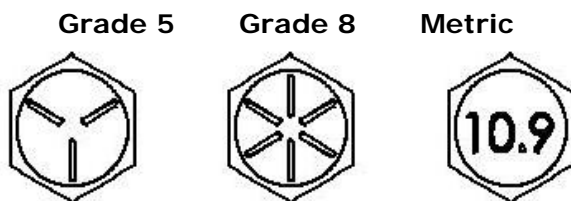
THIS KIT CAN BE USED WITH FABTECH'S 5" SHORT ARM SYSTEM OR 5" CRAWLER SYSTEM ONLY.

READ ALL INSTRUCTIONS THOROUGHLY FROM START TO FINISH BEFORE BEGINNING INSTALLATION.

THIS KIT MUST BE INSTALLED WITH FABTECH DIRT LOGIC COILOVER SHOCK KIT FTS24088BK NOT INCLUDED IN THIS BOX KIT

**** USE THE SUPPLIED THREAD-LOCKING COMPOUND ON ALL HARDWARE.**

S.A.E. Bolt Torque Specification Chart



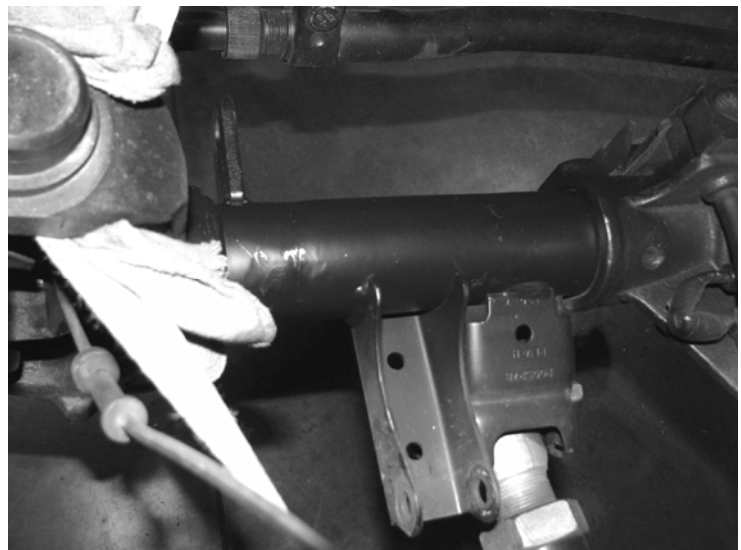
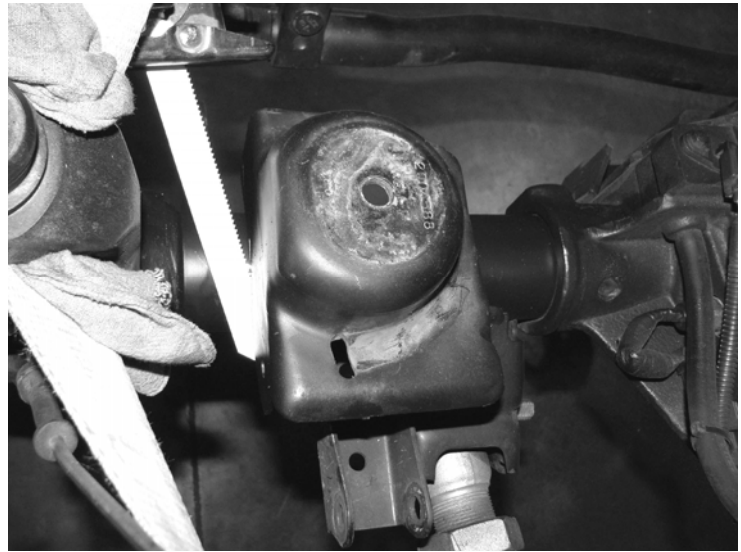
Standard			Metric		
	Grade 5	Grade 8		Grade 8.8	Grade 10.9
SIZE	ft. lbs.	ft. lbs.	SIZE	ft. lbs.	ft. lbs.
1/4"	10	14	M-6	7	12
5/16"	21	29	M-8	17	29
3/8"	37	52	M-10	35	58
7/16"	59	83	M-12	65	100
1/2"	90	127	M-14	100	160
9/16"	129	184	M-16	150	240
5/8"	179	254	M-18	200	300
3/4"	317	450	M-20	300	400

INSTRUCTIONS:

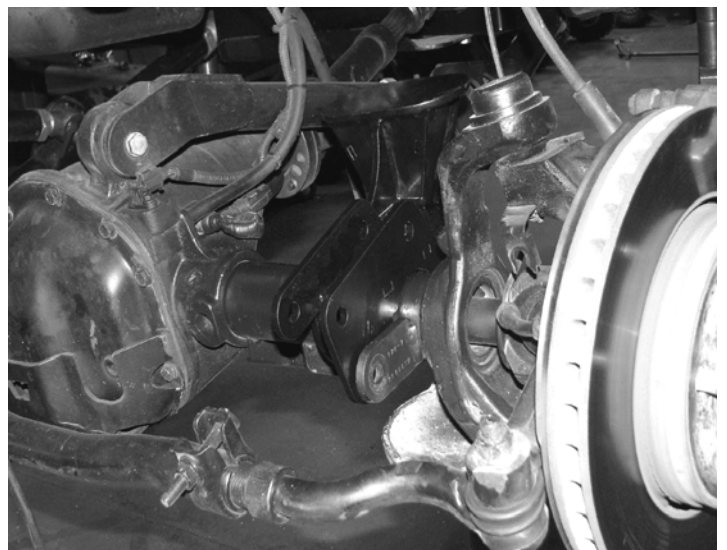
1. Take an accurate measurement of the front of the Jeep. This measurement will need to be taken from the center of the front wheel hub to the centermost part of the wheel well. This measurement will be needed to correctly set the height for the new Coilover shocks. **DO NOT** exceed 5" over stock height. If you are adding this kit to a Jeep that is already lifted, then match the current height. Record your measurements below.

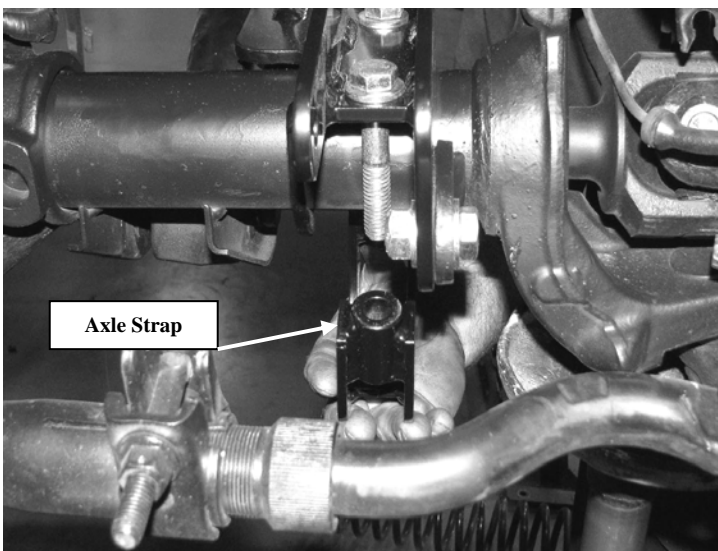
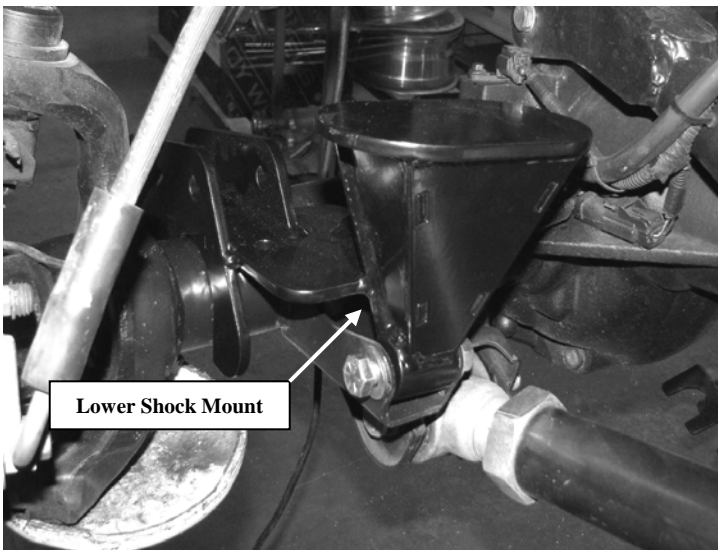
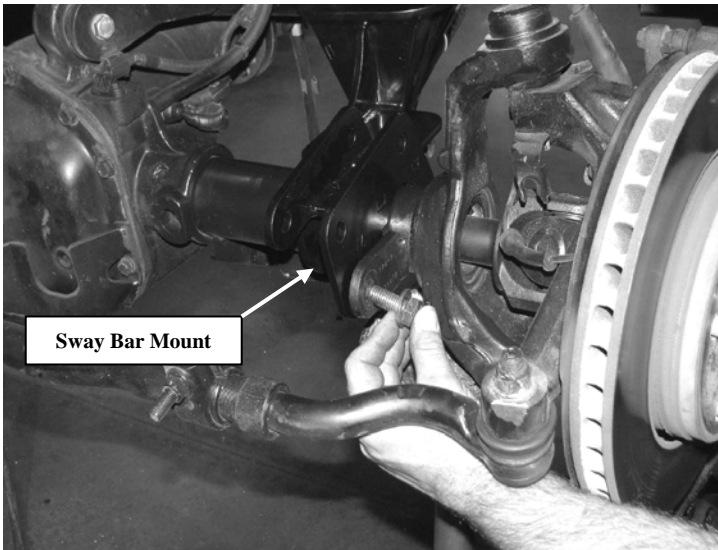
Right _____ Left _____

2. Disconnect the negative terminal on the battery. With the vehicle on level ground, set the emergency brake and block the rear tires. Jack up the front end of the truck and support the frame rails with jack stands. **NEVER WORK UNDER AN UNSUPPORTED VEHICLE!** Remove the front tires. Support the front axle. Do not allow to hang freely.
3. Working from both sides of the Jeep, unbolt the front brake line bracket from the frame and save the hardware. Remove the ABS sensor wire from the C-Clips on the front knuckle. On Rubicon models only: Unplug the front diff locker harness from the axle.
4. Remove the front shocks and discard.
5. Disconnect the front sway bar from the axle mounts and save the hardware. Remove the upper and lower Fabtech sway bar end link mounts and discard. **DO NOT REMOVE FACTORY LOWER SWAY BAR MOUNT.**
6. Disconnect the front trac bar from the Axle mount and save the hardware.
7. Using a pickle fork, separate the draglink from the pitman arm and save the hardware.
8. Lower the floor jack supporting the front axle, to allow the coil springs to come free. **USE CARE WHEN WORKING WITH COIL SPRINGS UNDER LOAD!!** Remove the coil springs from the Jeep and discard. Some models may be equipped with lower coil spring retaining clips, if so remove and discard before removing the coil spring.
9. Remove the factory upper rubber coil isolator and discard.
10. Using Reciprocating Saw, remove the factory coil spring pad from the axle. Clean axle with sanding discs and scotch brite pads. Paint bare metal areas with Black paint. SEE PHOTOS IN NEXT COLUMN.

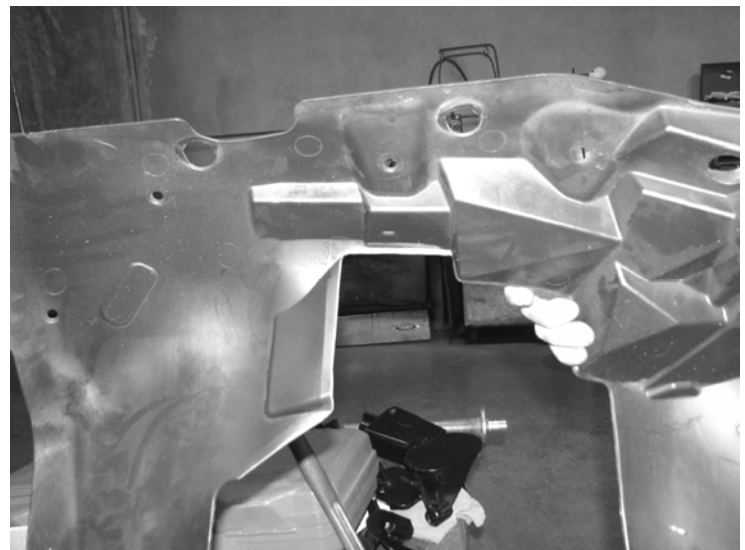


11. Working from the driver's side of the Jeep, locate FT50347BK Driver Side Lower Mount, FT50378BK Axle Strap, and supplied 1/2" hardware. Install lower Mount onto axle. SEE PHOTOS BELOW AND ON NEXT PAGE.





12. Locate plastic inner fender wells and mark as shown in photos. With die grinder and cutoff wheel cut along the line, smooth with a barrel sander. SEE PHOTOS IN NEXT COLUMN.



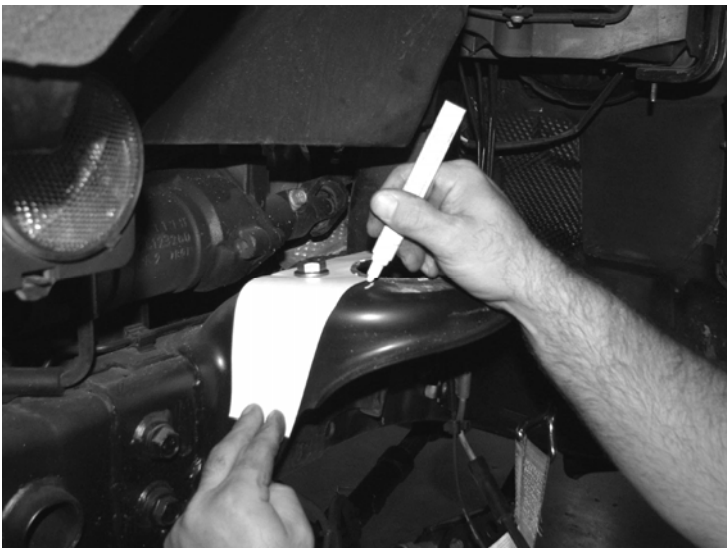
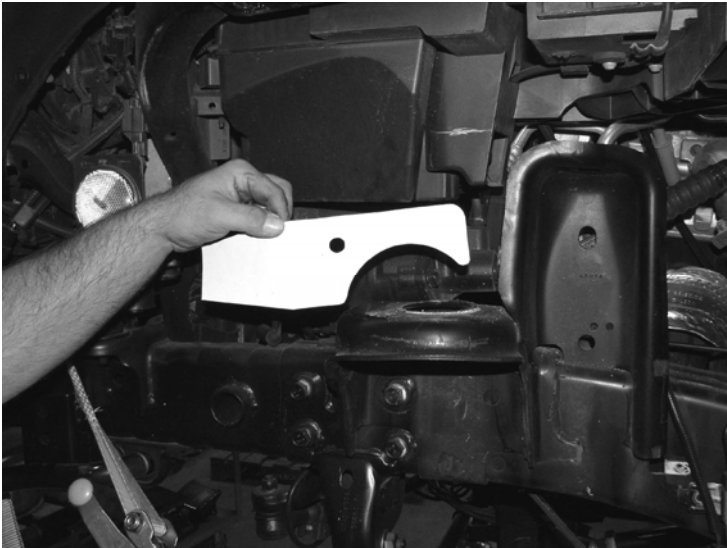
Fender Wells Removed Above For Photos Only

13. Using Reciprocating Saw, remove the factory Bump Stop by cutting off the top of the mount. SEE PHOTOS BELOW AND ON NEXT PAGE.





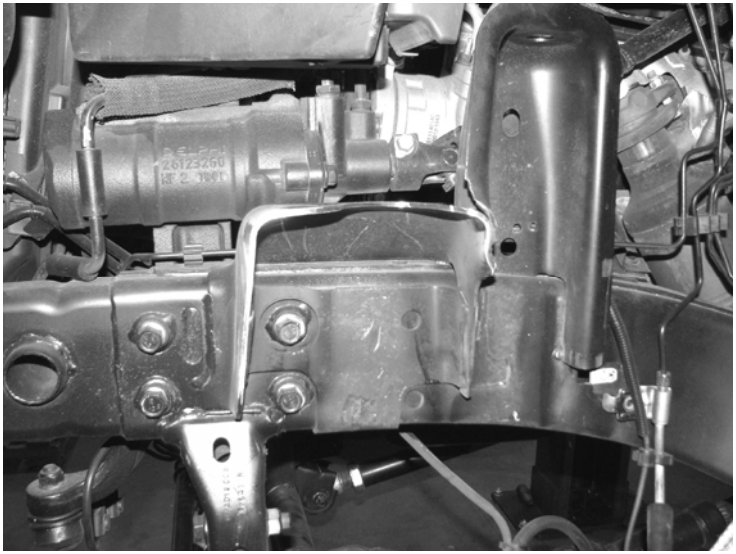
14. Locate template on last page of this instruction sheet. Place Template onto the upper Coil Spring Mount and hold in place by inserting a 1/2" bolt into the hole in the top of the Coil Spring Mount. Mark with a paint pen. SEE PHOTOS BELOW AND IN NEXT COLUMN.



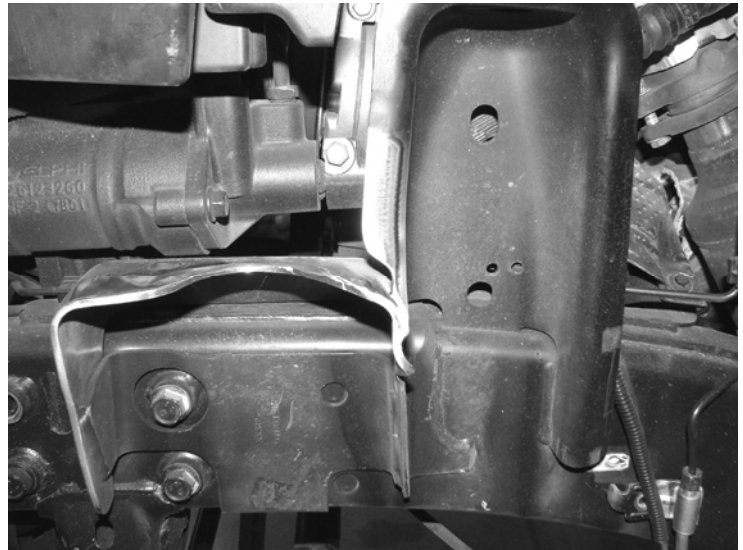
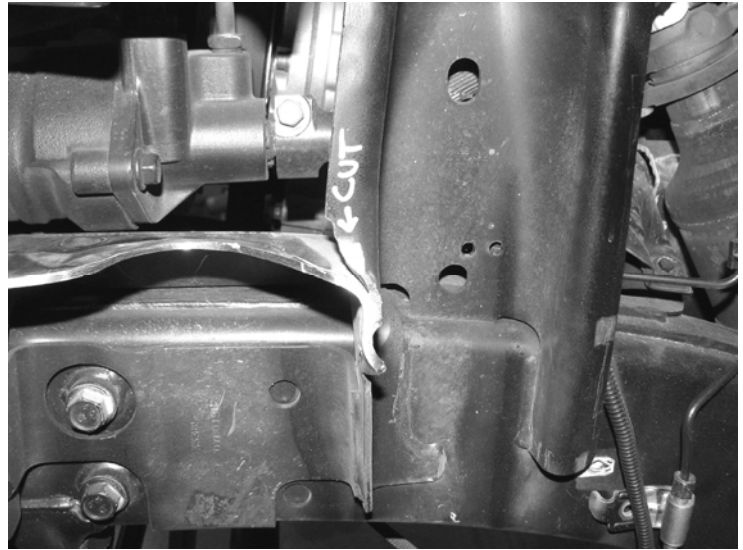
15. Using Reciprocating Saw cut along line made on the upper coil spring mount. SEE PHOTOS BELOW.



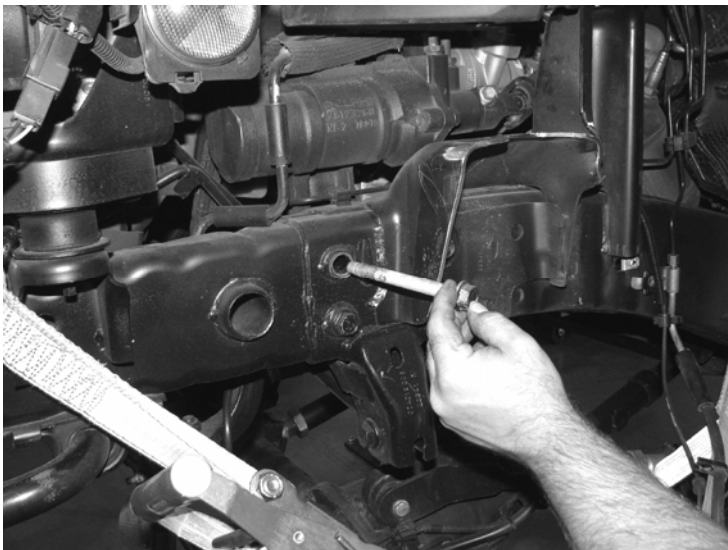
16. Using a Die Grinder with sanding disc and scotch brite pad clean up all bare metal areas. SEE PHOTOS ON NEXT PAGE.



The inside lip of the shock tower may need to be bent back to allow the hoop to fit flush with the frame. SEE PHOTOS BELOW.

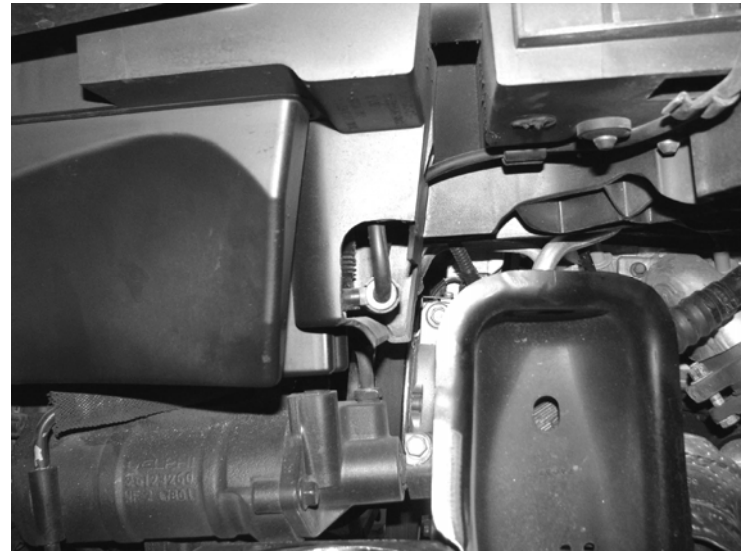
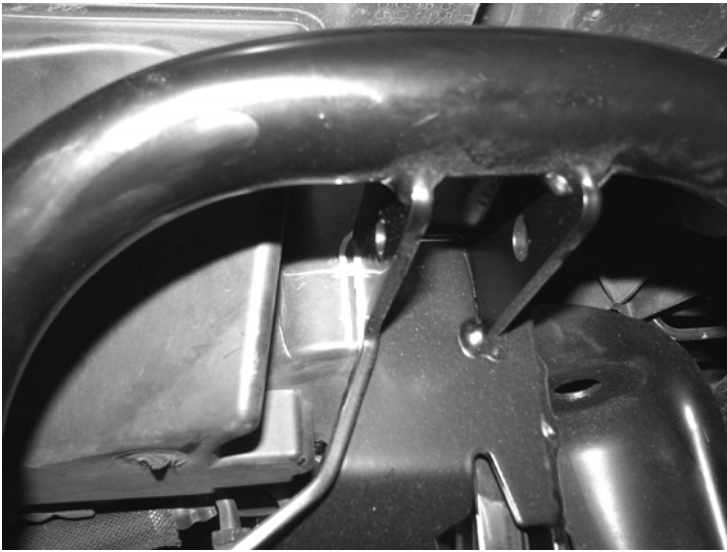


17. Remove the top bolt from the steering box and save. SEE PHOTO BELOW.

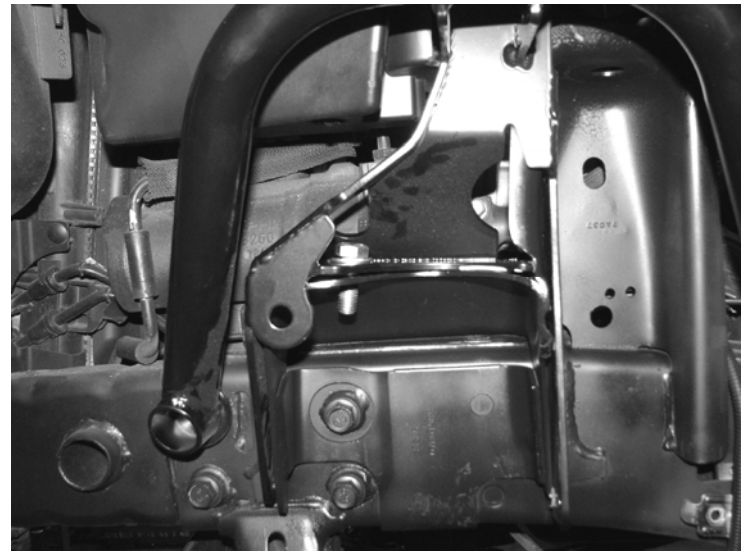


19. Using hoop as a template mark a line around the upper shock mount on the windshield washer bottle. Remove hoop and carefully cut along line, with a Die Grinder and cut off wheel. Clean edges with a barrel sander. **USE CAUTION NOT TO CUT INTO THE TANK OR THE WATER LINE. SEE PHOTOS ON NEXT PAGE.**

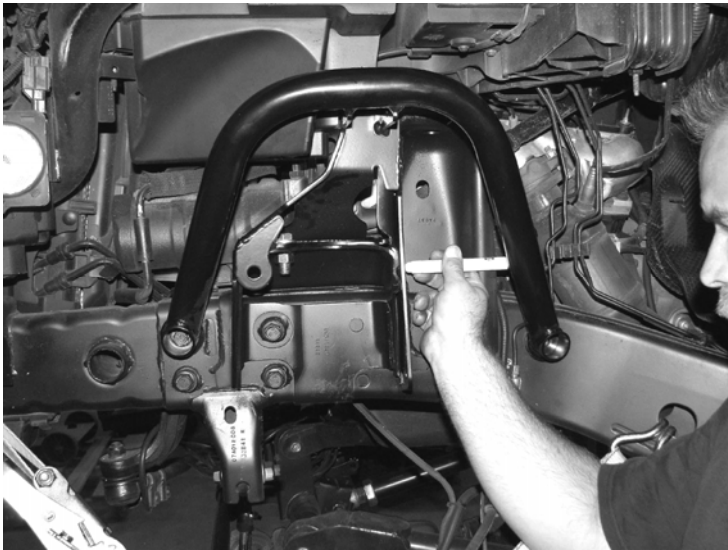
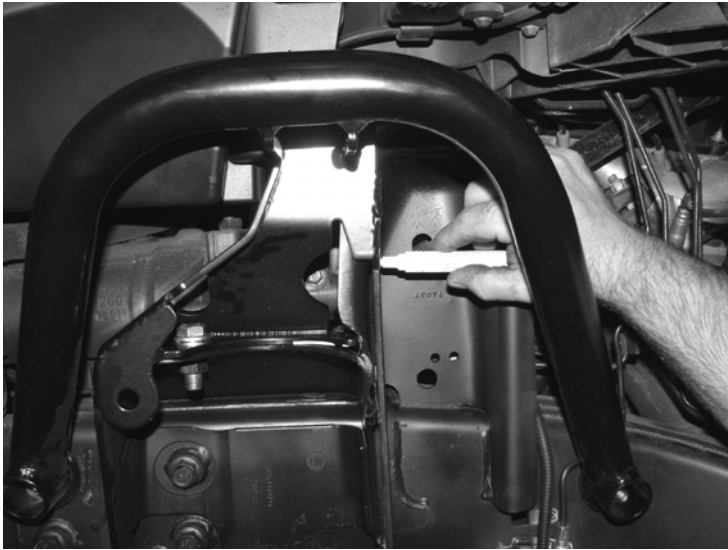
18. Using a Die Grinder notch shock tower approx. 1" to fit plate on shock hoop. Clean with sanding disc and scotch brite.



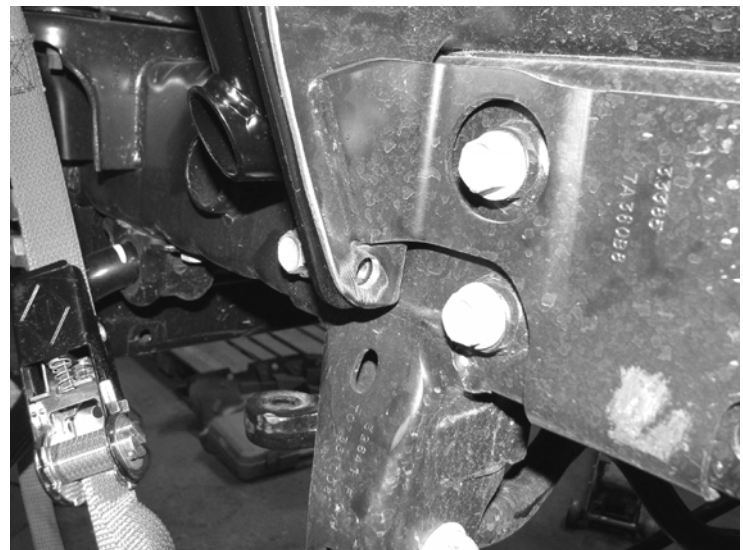
20. Place hoop back into position and insert the factory bolt into the steering box and a 1/2" bolt with washer and nut into the top plate. Tighten both bolts. **Due to variances from vehicle to vehicle, more trimming / cutting may be required for proper hoop clearance. Do not remove more material than necessary. SEE PHOTOS BELOW.**

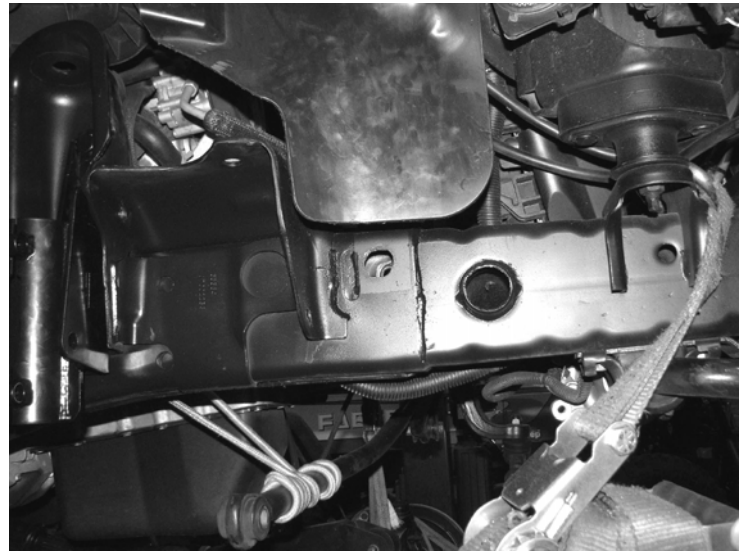
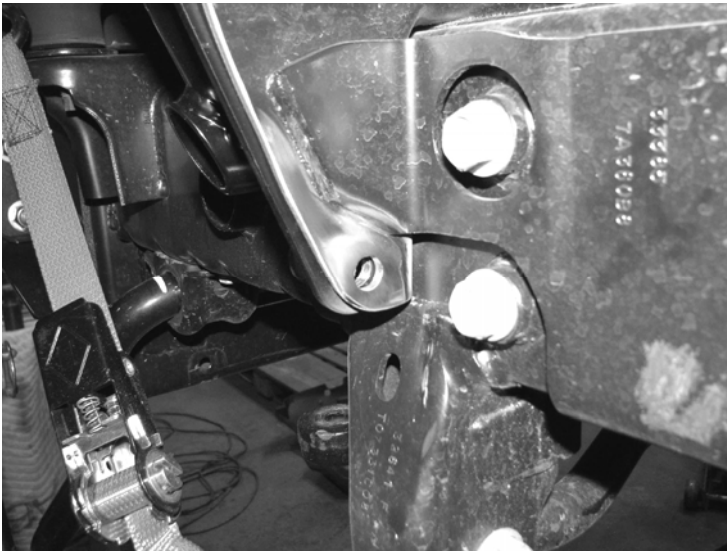


21. With a paint pen mark the two holes in the shock tower, one in the rear leg of the shock hoop, and one in the front of the upper coil spring mount. SEE PHOTOS BELOW AND IN NEXT COLUMN.

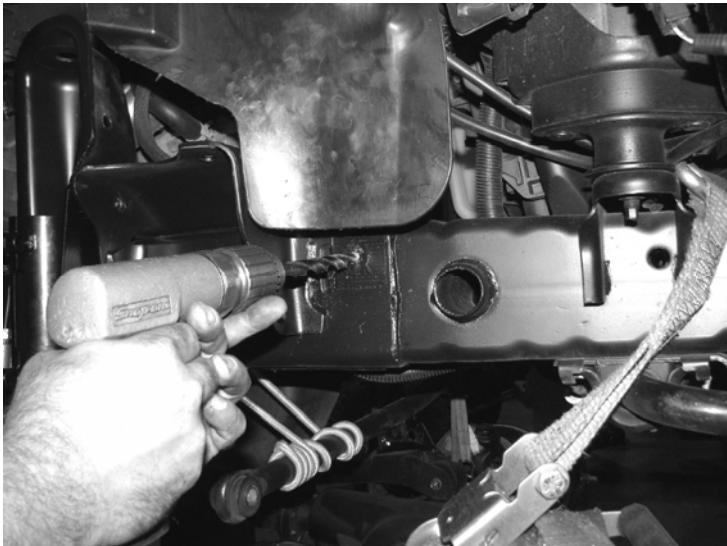
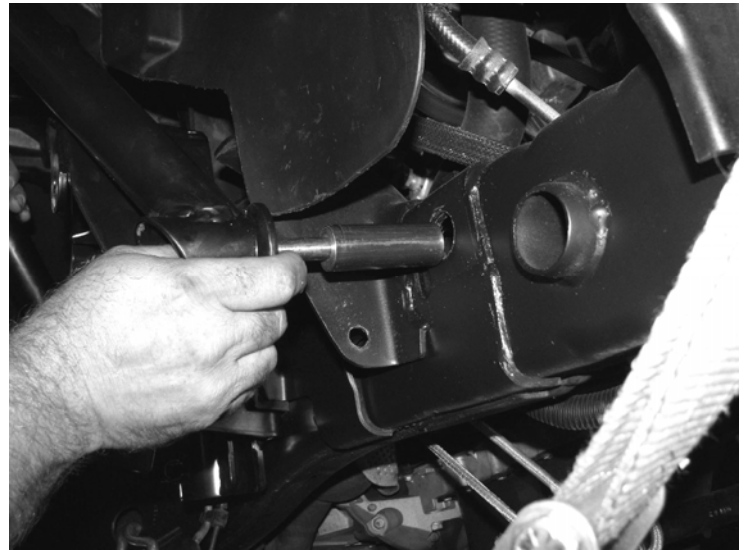


22. Using hoop as a template remove any excess material on the upper coil spring mount. Remove the hoop and drill out the marked holes to 1/2", starting with 1/4" pilot holes. On the rear leg, only drill the outer half of the frame.
23. With a Die Grinder and sanding disc remove excess material from inside the front edge of the coil spring mount, so that the washer sits flat. Paint all bare metal areas with black paint. SEE PHOTOS BELOW AND ON NEXT PAGE.



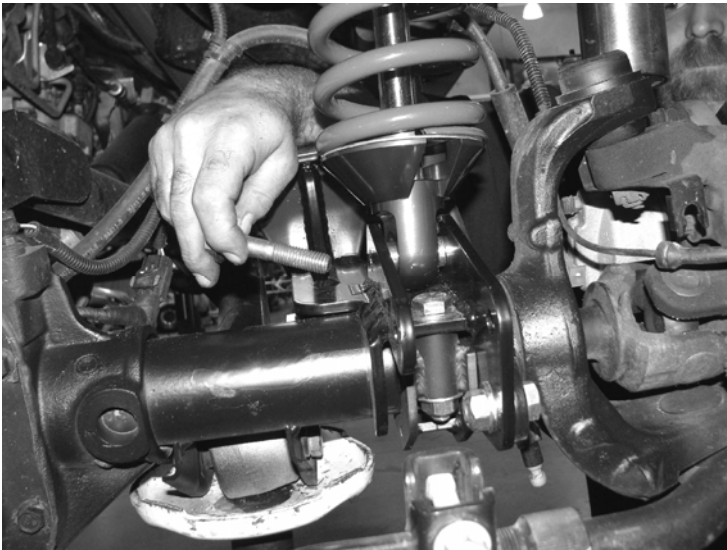


24. Re-install hoop at this time. Locate FT50376 Nut Tab for rear leg of hoop and insert through the large access hole in the frame, behind the rear leg of the hoop.
25. Tighten all hardware at this time, **torque to 127 Ft. Lbs.
26. Repeat steps nine through twenty three on the passenger side of the Jeep. When drilling the mounting holes mark and drill the passenger front leg all the way through both frame surfaces, outer and inner with a 1/4" drill bit.
27. Locate 1/2"- 13 X 4" Bolt and FT164 Sleeve, Using a hole saw or 1" drill bit, drill the outer frame hole for the front leg of the hoop out to 1", then drill the inner frame half out to 1/2". Insert the bolt and sleeve and tighten to **127 Ft. Lbs. SEE PHOTOS BELOW AND IN NEXT COLUMN.



**IF INSTALLING OPTIONAL FABTECH
HYDRAULIC BUMPSTOP KIT FTS24089BK;
DO SO AT THIS TIME**

28. Locate and install FT820192 Coilover Shock, using two Mis-alignment spacers in the top and bottom bearings. Torque the 1/2" X 2 3/4" hardware to **127 Ft. Lbs. SEE PHOTOS ON NEXT PAGE.



29. Use the supplied large clamps and poly mounts FTS89904 to attach the Reservoirs to the front of the shock hoop. SEE PHOTO BELOW.

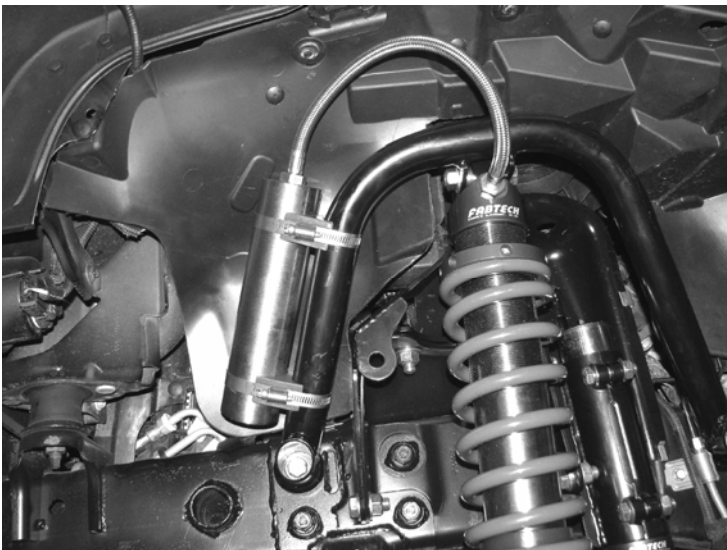


PHOTO SHOWS OPTIONAL HYDRAULIC BUMP STOP

30. Attach Drag link to Pitman arm using factory nut, Torque to 60 Ft. Lbs. Reconnect the front Trac bar to the axle using the original hardware** Torque to 184 ft. lbs.

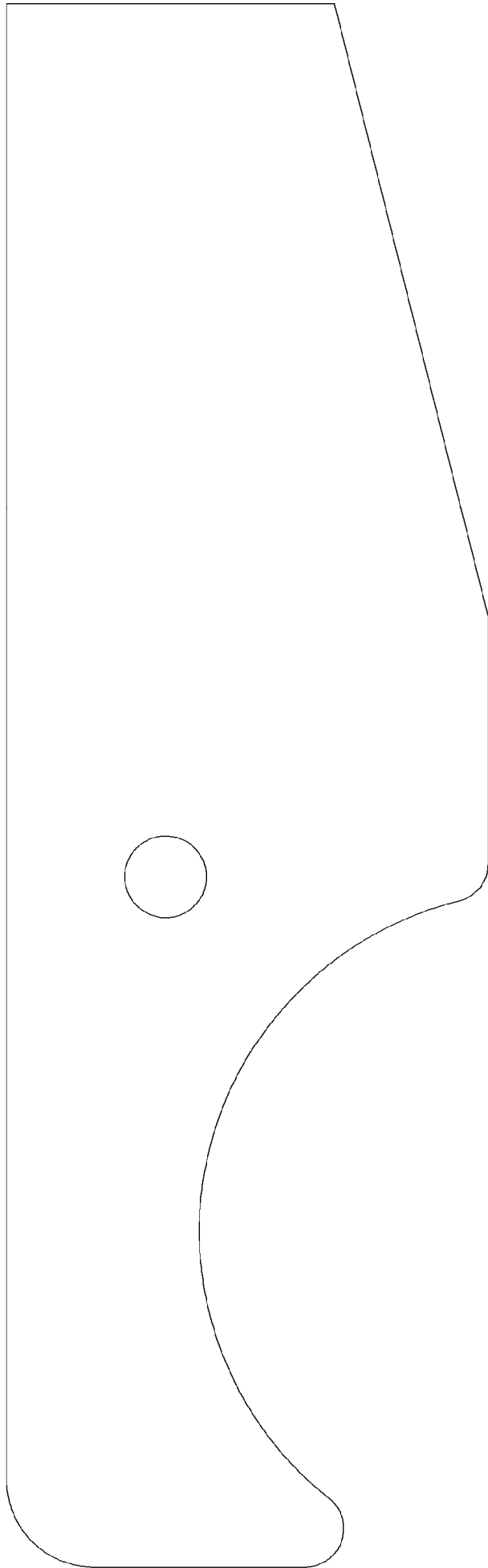
31. Connect the front sway bar end link to the new bracket using the original hardware. SEE PHOTO BELOW.



32. Reconnect the brake line brackets, ABS sensor wires, and Ft. Diff. locker using factory hardware.

33. Reinstall the front tires and set the Jeep back on the ground. Measure front height of the Jeep and compare them to the measurements that were taken at the beginning of the install. Turning the steering wheel fully in each direction, check for contact between the tires and any newly installed components. Drive the truck fifty miles and complete a full front-end alignment. Re-adjust headlights.

**Use the same template for
driver and passenger sides of
Jeep just flip over and use
reverse side**



RETORQUE ALL NUTS, BOLTS AND LUGS AFTER 50 MILES AND PERIODICALLY THEREAFTER.

For technical assistance call: 909-597-7800

Product Warranty and Warnings-

Fabtech provides a Limited Lifetime Warranty to the original retail purchaser who owns the vehicle, on which the product was originally installed, for defects in workmanship and materials.

The Limited Lifetime Warranty excludes the following Fabtech items; bushings, bump stops, ball joints, tie rod ends, limiting straps, cross shafts, heim joints. These parts are subject to wear and are not considered defective when worn. They are warranted for 60 days from the date of purchase for defects in workmanship.

Take apart shocks are considered a serviceable shock with a one year warranty on leakage only. Service seal kits are available separately for future maintenance. All other shocks are covered under our Limited Lifetime Warranty.

Fabtech does not warrant any product for finish, alterations, modifications and/or installation contrary to Fabtech's instructions. Alterations to the finish of the parts including but not limited to painting, powder coating, plating and/or welding will void all warranties. Some finish damage may occur to parts during shipping which is considered normal and is not covered under warranty.

Fabtech products are not designed nor intended to be installed on vehicles used in race applications or for racing purposes or for similar activities. (A "RACE" is defined as any contest between two or more vehicles, or any contest of one or more vehicle against the clock, whether or not such contest is for a prize). This warranty does not include coverage for police or taxi vehicles, race vehicles, or vehicles used for government or commercial purposes. Also excluded from this warranty are sales outside of the United States of America.

Installation of most suspension products will raise the center of gravity of the vehicle and will cause the vehicle to handle differently than stock. It may increase the vehicle's susceptibility to a rollover, on road and off road, at all speeds. Extreme care should be taken to operate the vehicle safely at all times to prevent rollover or loss of control resulting in serious injury or death. Fabtech front end Desert Guards may impair the deployment or operation of vehicles equipped with supplemental restraining systems/air bag systems and should not be installed if the vehicle is equipped as so.

Fabtech makes every effort to ensure suspension product compatibility with all vehicles listed in the catalog, but due to unknown auto manufacturers production changes and/or inconsistencies by the auto manufacturer, Fabtech cannot be responsible for 100% compatibility, including the fitment of tire and wheel sizes listed. The Tire and Wheel sizes listed in Fabtech's catalog are only a guideline for street driving with noted fender trimming. Fabtech is not responsible for damages to the vehicle's body or tires.

Fabtech's obligation under this warranty is limited to the repair or replacement, at Fabtech option, of the defective product only. All costs of removal, installation or re-installation, freight charges, incidental or consequential damages are expressly excluded from this warranty. Fabtech is not responsible for damages and/or warranty of other vehicle parts related or non related to the installed Fabtech product. This warranty is expressly in lieu of all other warranties expressed or implied. This warranty shall not apply to any product that has been subject to accident, negligence, alteration, abuse or misuse as determined by Fabtech.

Fabtech suspension components must be installed as a complete system including shocks as shown in our current catalog. All warranties will become void if Fabtech parts are combined and/or substituted with other aftermarket suspension products. Combination and/or substitution of other aftermarket suspension parts may cause premature wear and/or product failure resulting in an accident causing injury or death. Fabtech does not warrant products not manufactured by Fabtech.

Installation of Fabtech product may void the vehicles factory warranty; it is the consumer's responsibility to check with their local vehicle's dealer for warranty disposition before the installation of the product.

It is the responsibility of the distributor and/or the retailer to review all warranties and warnings of Fabtech products with the consumer prior to purchase.

Fabtech reserves the right to supercede, discontinue, change the design, finish, part number and, or application of parts when deemed necessary without written notice. Fabtech is not responsible for misprints or typographical errors within the catalog or price sheet.