



Dirt Logic Steering Stabilizer FTS24091 2007-18 Jeep JK

Installation Instructions

PARTS LIST:

	FTS24091	JK DL STEERING STABILIZER
Qua	Part #	Description
1	FT85005-U	Unpackaged Stabilizer
1	FT86035	Hardware Kit
1	FT50374	Hardware Subassembly
1	FT89900	Sticker
1	FT50369BK	Axle Bracket
1	FT50370BK	Axle Strap Bracket
1	FTBOX27	Box

	FT50374	Hardware Subassembly
Qua	Part #	Description
2	50133001081	1/2"-13 x 3" Hex Cap Bolt
2	50130004152	1/2"-13 C-Lock Nut
4	50000005081	1/2" SAE Flat Washer
1	12701751082	12mm x 1.75 x 70mm Bolt
1	12175003012	12mm x 1.75 NyLock Nut
2	50000005052	1/2" SAE Flat Washer
1	FTLOCK	Thread Locking Compound
2	FT24091i	Instruction Sheet
1	FTREGCARD	Reg. Card
1	FTAS16	Decal
1	FTAS12	Fabtech Sticker

**4331 EUCALYPTUS AVE. CHINO, CA. 91710
PHONE 909-597-7800 FAX 909-597-7185**

TOOL LIST: (NOT INCLUDED)

- ASSORTED S.A.E. WRENCHES & SOCKETS
- TORQUE WRENCH
- DIE GRINDER WITH CUT OFF WHEEL & SANDING DISC

READ BEFORE BEGINNING INSTALATION

DIRT LOGIC SHOCKS ARE BUILT TO EXACTING STANDARDS AND ARE PROPERLY TUNED FOR YOUR VEHICLE IN ORDER TO OPTIMIZE YOUR RIDE. REMEMBER THAT EACH DIRT LOGIC SHOCK IS DESIGNED AND BUILT TO BOTH BEAUTIFY AND UPGRADE YOUR VEHICLE SO SPECIAL CARE SHOULD BE TAKEN WHEN INSTALLING AND CLEANING YOUR NEW DIRT LOGIC SHOCK.

BEFORE INSTALLING THIS SHOCK MAKE SURE TO FOLLOW THE INSTRUCTIONS SUPPLIED WITH THE FABTECH PERFORMANCE SUSPENSION SYSTEM YOU PURCHASED.

DO NOT ALTER THE FINISH OF THESE COMPONENTS, EXAMPLE- CHROMING, ZINC PLATING OR PAINTING. CHANGING THE FINISH CAN CAUSE STRUCTURAL FATIGUE OF COMPONENTS.

CHECK ALL PARTS INCLUDED IN THIS KIT TO THE PARTS LIST ABOVE BEFORE BEGINNING INSTALLATION OF THE KIT. IF ANY PIECES ARE MISSING, CONTACT FABTECH AT 909-597-7800

NOTE- READ ALL INSTRUCTIONS THOROUGHLY FROM START TO FINISH BEFORE BEGINNING INSTALLATION! IF THESE INSTRUCTIONS ARE NOT PROPERLY FOLLOWED SEVERE SHOCK AND OR SUSPENSION DAMAGE MAY RESULT.

**** USE THE SUPPLIED THREAD-LOCKING COMPOUND ON ALL HARDWARE.**

S.A.E. Bolt Torque Specification Chart

Grade 5



Grade 8



Metric



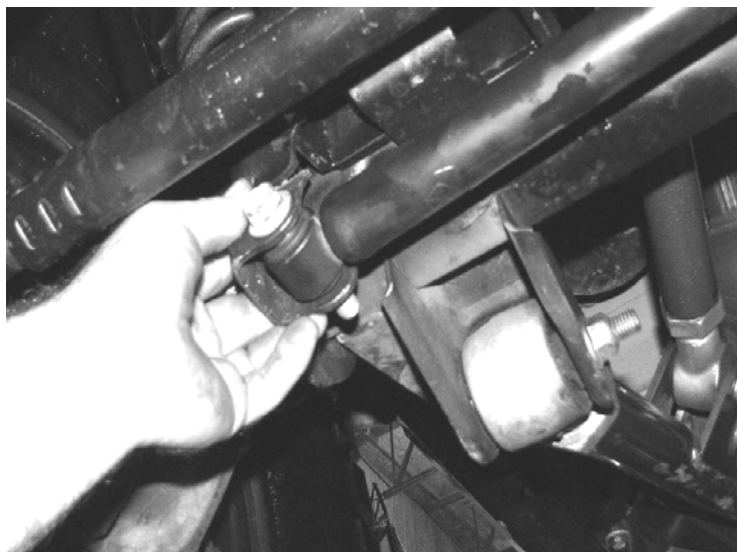
Standard

Metric

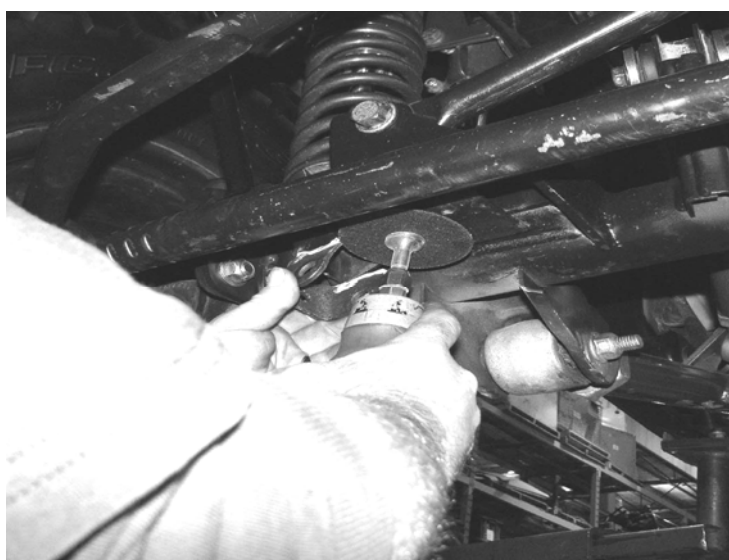
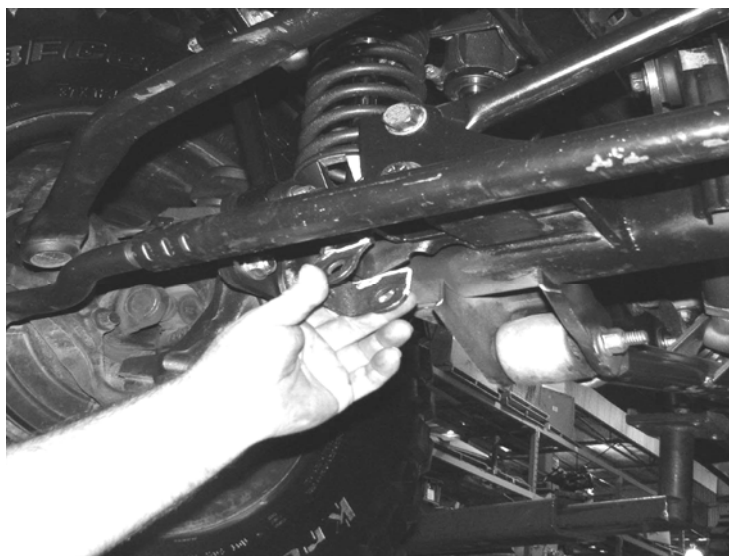
	Grade 5	Grade 8		Grade 8.8	Grade 10.9
SIZE	ft. lbs.	ft. lbs.	SIZE	ft. lbs.	ft. lbs.
1/4"	10	14	M-6	7	12
5/16"	21	29	M-8	17	29
3/8"	37	52	M-10	35	58
7/16"	59	83	M-12	65	100
1/2"	90	127	M-14	100	160
9/16"	129	184	M-16	150	240
5/8"	179	254	M-18	200	300
3/4"	317	450	M-20	300	400

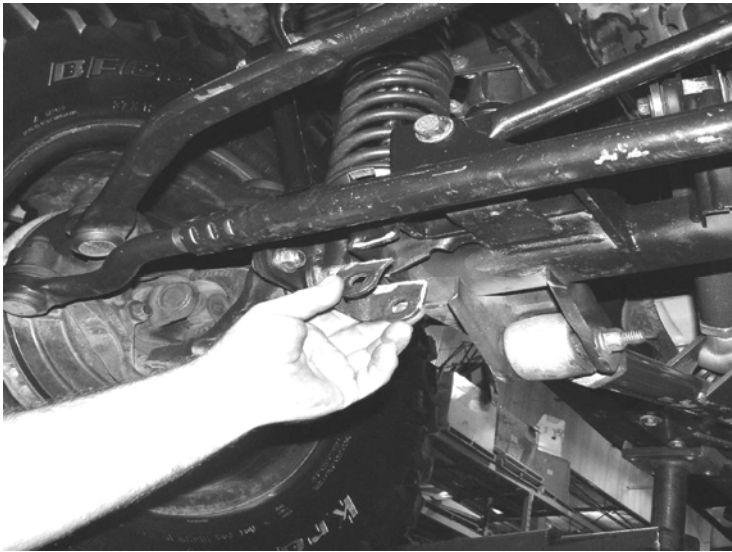
INSTRUCTIONS:

1. Disconnect the negative terminal on the battery. Park the jeep on level ground and set the emergency brake. Set the front wheels in the straight position. **NEVER WORK UNDER AN UNSUPPORTED VEHICLE.**
2. Remove the factory stabilizer, leaving the bracket on the Center link. Save hardware from the bar pin. SEE PHOTOS BELOW.

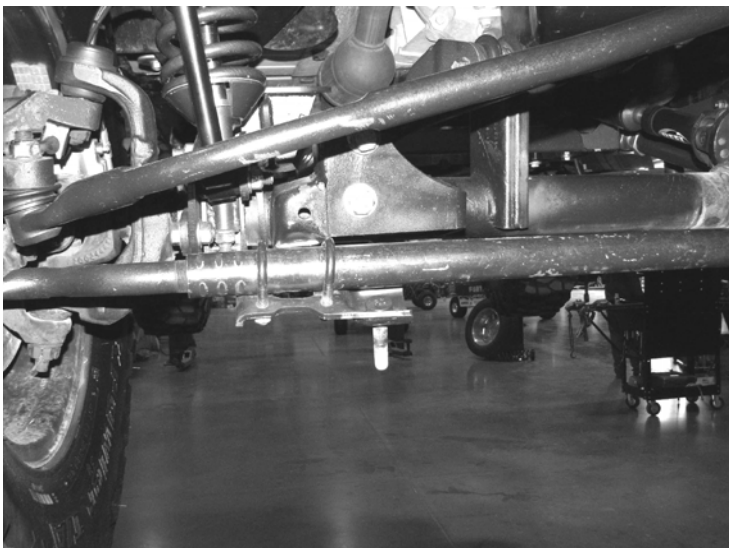
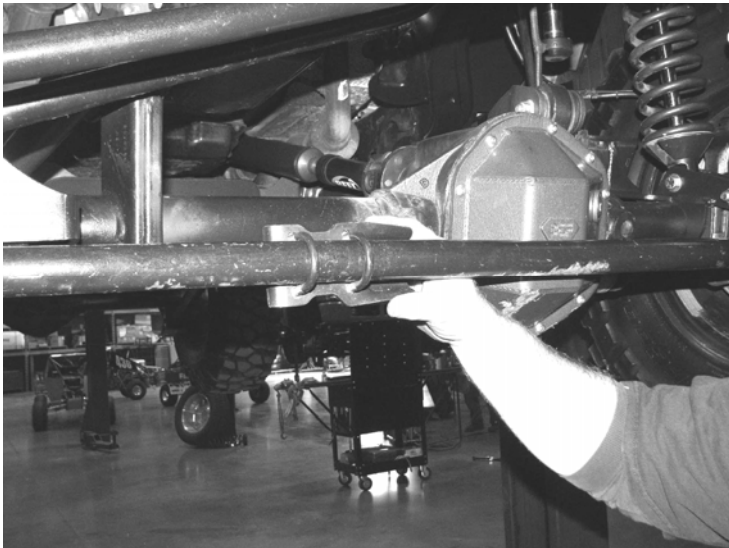


3. With a paint pen, mark a line 1" down from the center of the hole in the factory Track Bar Mount. With a Die grinder and cut off wheel, remove the stock stabilizer mount at the line. Sand edges and paint bare metal areas with black paint. SEE PHOTOS BELOW.

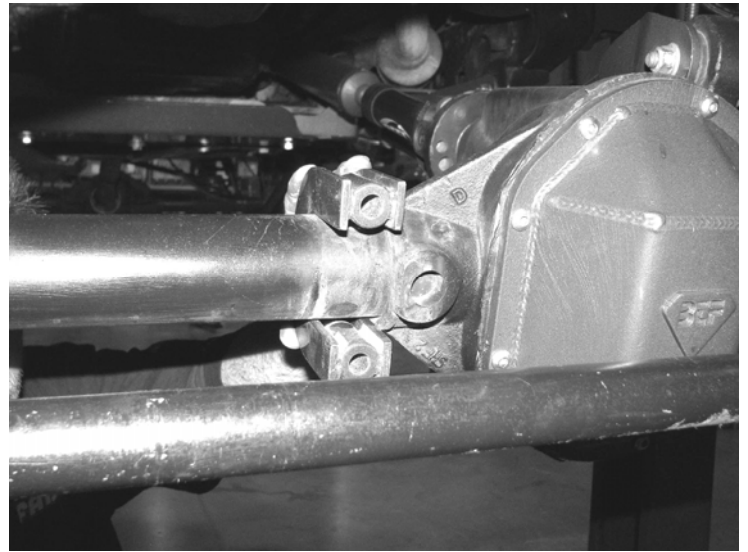




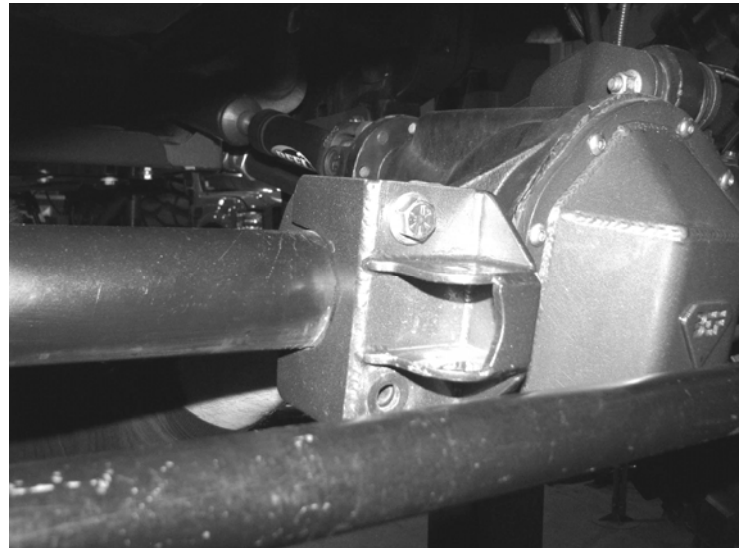
4. Loosen the U-bolts holding the bracket onto the Center link and slide it to the passenger side of the vehicle. SEE PHOTOS BELOW.



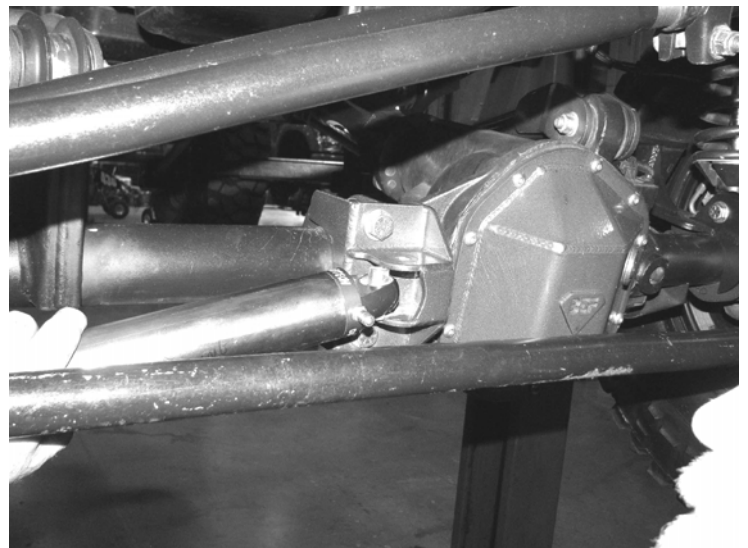
5. Locate and install the axle strap bracket FT50370BK. The strap should rest up against the gear housing. SEE PHOTO BELOW.



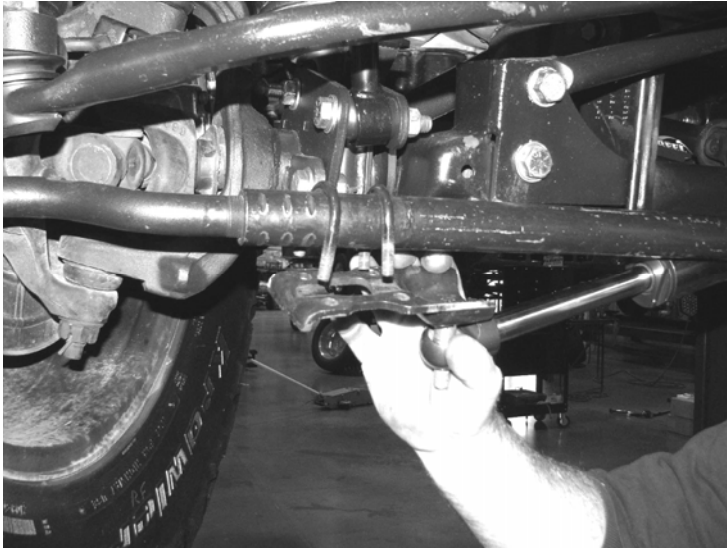
6. Locate FT50369BK axle bracket and place over the axle strap. Insert the supplied 1/2" hardware and tighten to **127 lbs. SEE PHOTO BELOW.



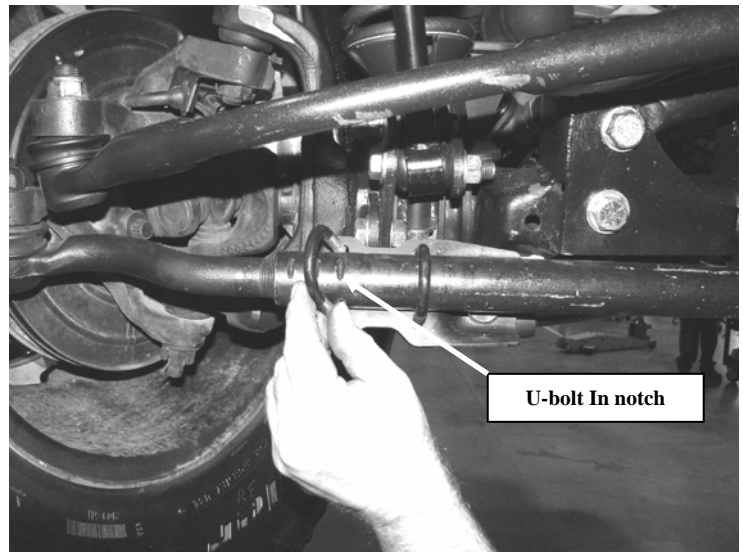
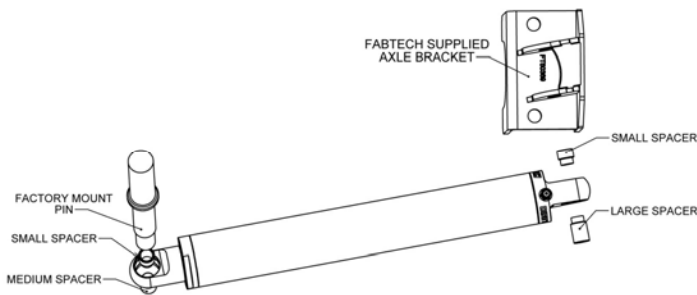
7. Locate FT85005-U steering stabilizer and install in the axle bracket with the top cap facing the driver side of the vehicle and the Schrader valve facing the front of the vehicle. Insert the supplied 12MM Hardware. SEE PHOTO BELOW.



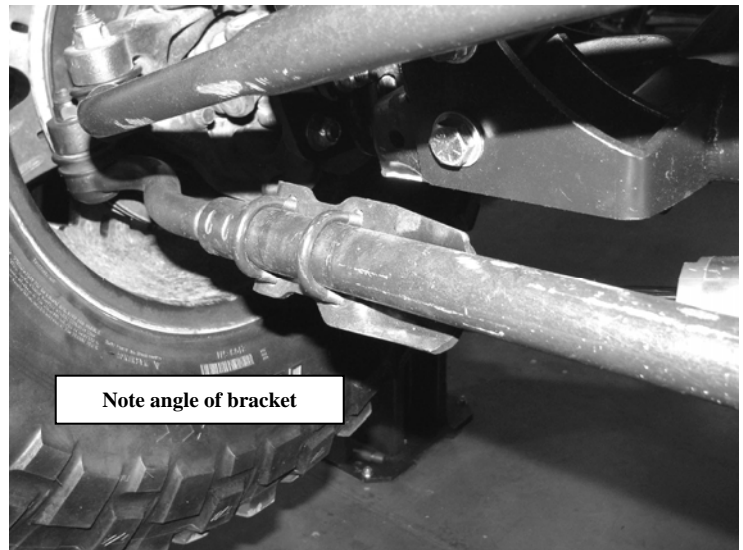
8. Turn the wheels all the way to the right and attach stabilizer to the factory bar pin bracket with the factory hardware. SEE PHOTO BELOW FOR SPACER ORIENTATION.



9. The U-bolt to the far right on the bar pin bracket should be in the notch on the center link closest to the driver side of the jeep, and be facing at a slight downward angle to clear the sway bar mount. SEE PHOTO BELOW.



10. Cycle the steering back and forth to make sure that the stabilizer and the brackets have adequate clearance, and then tighten all hardware. SEE PHOTO BELOW.



**RETORQUE ALL NUTS, BOLTS AND LUGS
AFTER 50 MILES AND PERIODICALLY
THEREAFTER**

For technical assistance call: 909-597-7800

Product Warranty and Warnings-

Fabtech provides a Limited Lifetime Warranty to the original retail purchaser who owns the vehicle, on which the product was originally installed, for defects in workmanship and materials.

The Limited Lifetime Warranty excludes the following Fabtech items; bushings, bump stops, ball joints, tie rod ends, limiting straps, cross shafts, heim joints. These parts are subject to wear and are not considered defective when worn. They are warranted for 60 days from the date of purchase for defects in workmanship.

Take apart shocks are considered a serviceable shock with a one year warranty on leakage only. Service seal kits are available separately for future maintenance. All other shocks are covered under our Limited Lifetime Warranty.

Fabtech does not warrant any product for finish, alterations, modifications and/or installation contrary to Fabtech's instructions. Alterations to the finish of the parts including but not limited to painting, powdercoating, plating and/or welding will void all warranties. Some finish damage may occur to parts during shipping which is considered normal and is not covered under warranty.

Fabtech products are not designed nor intended to be installed on vehicles used in race applications or for racing purposes or for similar activities. (A "RACE" is defined as any contest between two or more vehicles, or any contest of one or more vehicle against the clock, whether or not such contest is for a prize). This warranty does not include coverage for police or taxi vehicles, race vehicles, or vehicles used for government or commercial purposes. Also excluded from this warranty are sales outside of the United States of America.

Installation of most suspension products will raise the center of gravity of the vehicle and will cause the vehicle to handle differently than stock. It may increase the vehicle's susceptibility to a rollover, on road and off road, at all speeds. Extreme care should be taken to operate the vehicle safely at all times to prevent rollover or loss of control resulting in serious injury or death. Fabtech front end Desert Guards may impair the deployment or operation of vehicles equipped with supplemental restraining systems/air bag systems and should not be installed if the vehicle is equipped as so.

Fabtech makes every effort to ensure suspension product compatibility with all vehicles listed in the catalog, but due to unknown auto manufacturers production changes and/or inconsistencies by the auto manufacturer, Fabtech cannot be responsible for 100% compatibility, including the fitment of tire and wheel sizes listed. The Tire and Wheel sizes listed in Fabtech's catalog are only a guideline for street driving with noted fender trimming. Fabtech is not responsible for damages to the vehicle's body or tires.

Fabtech's obligation under this warranty is limited to the repair or replacement, at Fabtech option, of the defective product only. All costs of removal, installation or re-installation, freight charges, incidental or consequential damages are expressly excluded from this warranty. Fabtech is not responsible for damages and/or warranty of other vehicle parts related or non related to the installed Fabtech product. This warranty is expressly in lieu of all other warranties expressed or implied. This warranty shall not apply to any product that has been subject to accident, negligence, alteration, abuse or misuse as determined by Fabtech.

Fabtech suspension components must be installed as a complete system including shocks as shown in our current catalog. All warranties will become void if Fabtech parts are combined and/or substituted with other aftermarket suspension products. Combination and/or substitution of other aftermarket suspension parts may cause premature wear and/or product failure resulting in an accident causing injury or death. Fabtech does not warrant products not manufactured by Fabtech.

Installation of Fabtech product may void the vehicles factory warranty; it is the consumer's responsibility to check with their local vehicle's dealer for warranty disposition before the installation of the product.

It is the responsibility of the distributor and/or the retailer to review all warranties and warnings of Fabtech products with the consumer prior to purchase.

Fabtech reserves the right to supercede, discontinue, change the design, finish, part number and, or application of parts when deemed necessary without written notice. Fabtech is not responsible for misprints or typographical errors within the catalog or price sheet.