



Installation Instructions

Trac Bar Bracket Gusset Kit FTS24092

PARTS LIST

	FTS24092	Trac Bar Bracket Gusset Kit
Qty	Part #	Description
1	FT50358	Nut Tab
4	37000005052	3/8" SAE Flat Washer
2	37160003052	3/8" -16 Nylok Nut
2	37161001081	3/8" -16 X 1" Hex Bolt
1	FT157	Sleeve
2	FT24092i	Instruction Sheet
1	FT50342	Rear Track Bar Brkt
1	FT50343	Fr. Track Bar Gusset Lg
1	FT50344	Fr. Track Bar Gusset Sm
1	FT50362	Rear Track Bar Gusset

DO NOT ALTER THE FINISH OF THESE COMPONENTS, EXAMPLE- CHROMING, ZINC PLATING OR PAINTING. CHANGING THE FINISH CAN CAUSE STRUCTURAL FATIGUE OF COMPONENTS.

CHECK ALL PARTS INCLUDED IN THIS KIT TO THE PARTS LIST ABOVE BEFORE BEGINNING INSTALLATION OF THE KIT. IF ANY PIECES ARE MISSING, CONTACT FABTECH AT 909-597-7800

**READ ALL INSTRUCTIONS THOROUGHLY FROM START TO FINISH BEFORE BEGINNING INSTALLATION!
IF THESE INSTRUCTIONS ARE NOT PROPERLY FOLLOWED, SEVERE FRAME, DRIVELINE AND / OR SUSPENSION DAMAGE MAY RESULT.**

THE INSTALLATION OF THIS SUSPENSION SYSTEM SHOULD BE PERFORMED BY A PROFESSIONAL MECHANICS.

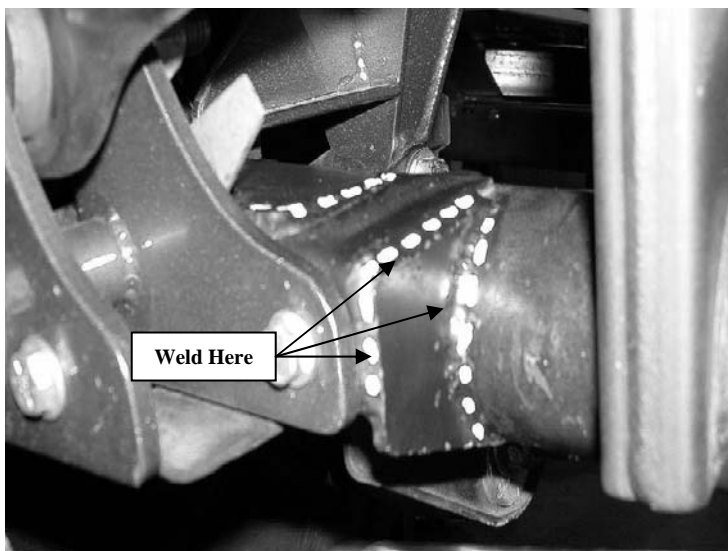
THE GUSSETS PROVIDED WITH THIS KIT ARE A WELD-ON INSTALLATION. ONLY AN EXPIRENCED CERTIFIED WELDER SHOULD COMPLETE THIS INSTALLATION.

TOOL LIST: (NOT INCLUDED)

- FLOOR JACK & JACK STANDS
- ASSORTED METRIC AND S.A.E SOCKETS, & WRENCHES
- DIE GRINDER W/ SANDING DRUM & DISCS
- MIG WELDER

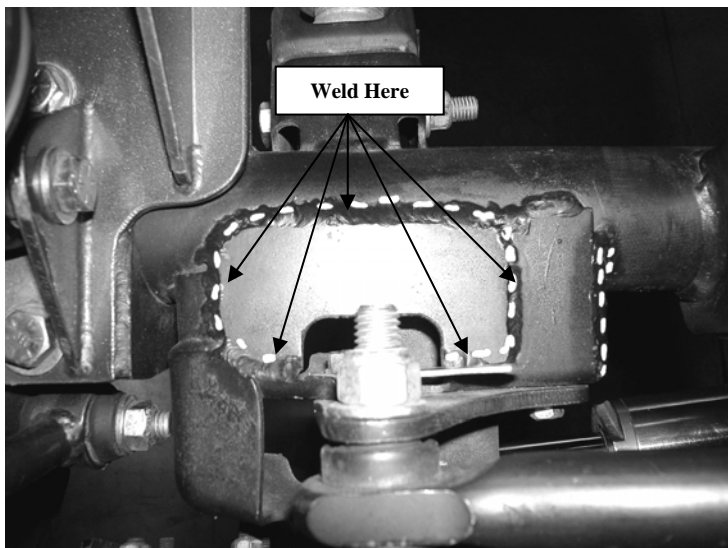
FRONT SUSPENSION INSTRUCTIONS:

1. Disconnect the negative terminal on the battery. With the vehicle on level ground, set the emergency brake and block the rear tires. Jack up the front end of the truck and support the frame rails with jack stands. **NEVER WORK UNDER AN UNSUPPORTED VEHICLE!** Remove the front tires. Support the front axle; do not allow to hang freely.
2. With the Trac Bar and Extended Trac Bar Bracket removed from the Jeep, remove any and all paint, dirt, or debris from the axle housing where the new gussets are to be installed.
3. Locate FT50344 gusset; position it onto the axle and the factory trac bar mount as shown in photo. Weld the gusset on the three outward / top sides. SEE PHOTO BELOW.



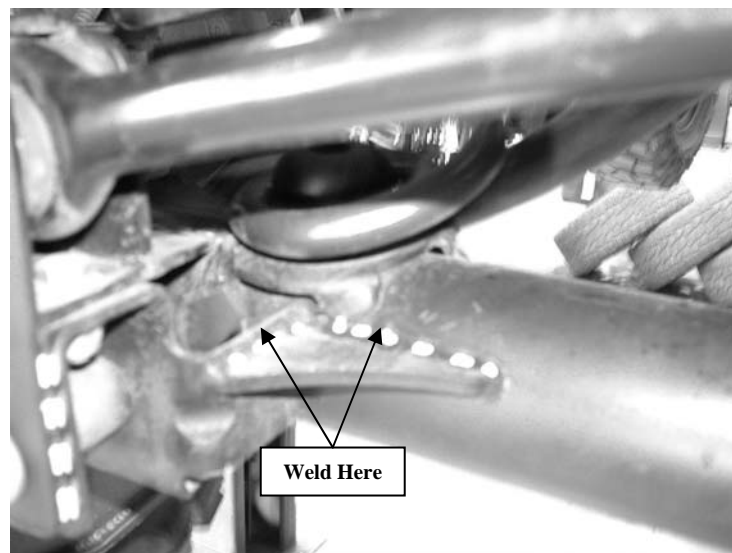
Trac bar installed for photo only, it must be removed prior to installation.

4. Locate FT50343 gusset, position it onto the top of the axle and trac bar mount. Weld the gusset as shown in the photo. SEE PHOTO BELOW.



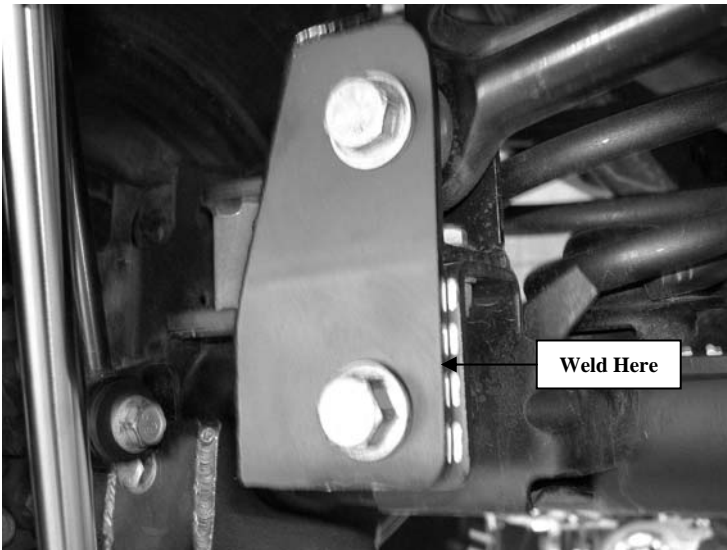
Trac bar installed for photo only, it must be removed prior to installation.

5. Once gusset kit has completely cooled, paint all bare metal areas
6. Re-install the Trac Bar Bracket & Trac Bar as it was removed. Use FT50358 Nut Tab to attach the bracket to the factory mount.
7. Install front tires and wheels. Torque lug nuts to wheel manufacture's specifications
8. With the vehicle on level ground, set the emergency brake and block the front tires. Jack up the rear end of the truck and support the frame rails with jack stands. **NEVER WORK UNDER AN UNSUPPORTED VEHICLE!** Remove the rear tires. Support the rear axle; do not allow to hang freely.
9. With the Trac Bar and Extended Trac Bar Bracket removed from the Jeep, remove any and all paint, dirt, or debris from the axle housing where the new gussets are to be installed
10. Locate FT50362 gusset; position it onto the axle and the factory trac bar mount as shown in photo. Weld the gusset on the two sides. SEE PHOTO BELOW.

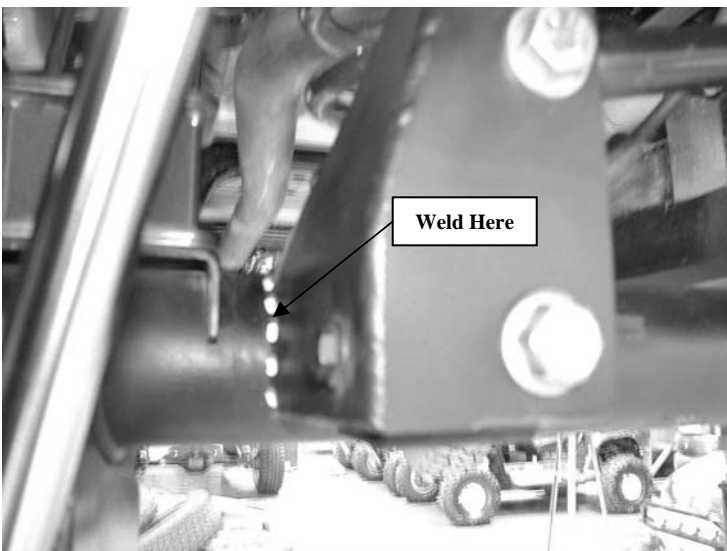


Trac bar installed for photo only, it must be removed prior to installation.

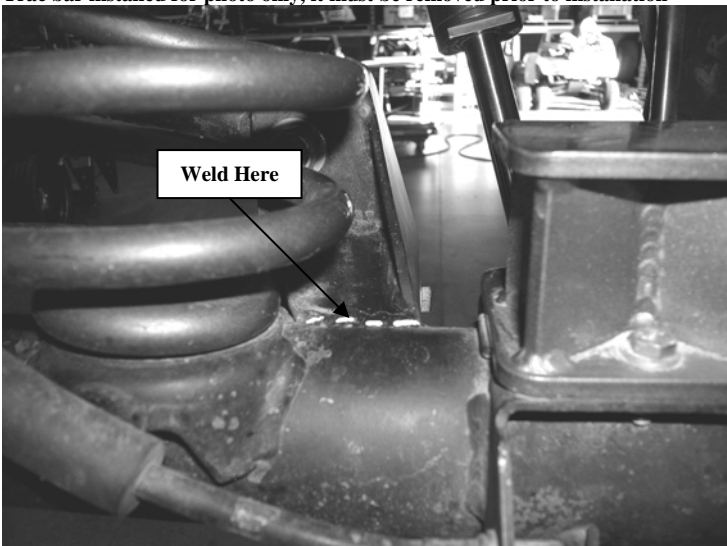
11. Locate FT50342 Rear Trac Bar Bracket, position it onto the top of the axle and trac bar mount. Use the factory bolt and nut tab to align the new bracket to the original mount. Use a punch and mark the two holes in the new bracket into the factory mount. Use a drill with a 3/8" bit and drill the two new holes. Locate and install the supplied 3/8" hardware. Weld the gusset as shown in the photo. SEE PHOTO ON NEXT PAGE.



Trac bar installed for photo only, it must be removed prior to installation

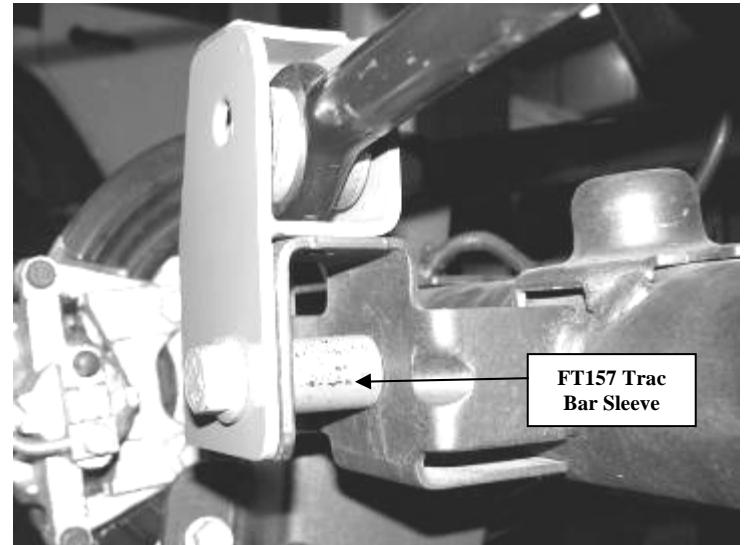


Trac bar installed for photo only, it must be removed prior to installation



View of front side of axle looking to the rear of the Jeep

12. Once gusset kit has completely cooled, paint all bare metal areas
13. Re-install the Trac Bar into the new mount with the original hardware and the supplied FT157 Trac bar Bracket Sleeve. SEE PHOTO BELOW.



14. Install rear tires and wheels. Torque lug nuts to wheel manufacture's specifications.
15. Recheck all nuts and bolts for proper torque specifications before driving. Realign truck to factory specifications and drive truck. Re-adjust headlights.

RETORQUE ALL NUTS, BOLTS AND LUGS AFTER 50 MILES AND PERIODICALLY THEREAFTER.

For technical assistance call: 909-597-7800

Product Warranty and Warnings-

Fabtech provides a Limited Lifetime Warranty to the original retail purchaser who owns the vehicle, on which the product was originally installed, for defects in workmanship and materials.

The Limited Lifetime Warranty excludes the following Fabtech items; bushings, bump stops, ball joints, tie rod ends, limiting straps, cross shafts, heim joints. These parts are subject to wear and are not considered defective when worn. They are warranted for 60 days from the date of purchase for defects in workmanship.

Take apart shocks are considered a serviceable shock with a one year warranty on leakage only. Service seal kits are available separately for future maintenance. All other shocks are covered under our Limited Lifetime Warranty.

Fabtech does not warrant any product for finish, alterations, modifications and/or installation contrary to Fabtech's instructions. Alterations to the finish of the parts including but not limited to painting, powdercoating, plating and/or welding will void all warranties. Some finish damage may occur to parts during shipping which is considered normal and is not covered under warranty.

Fabtech products are not designed nor intended to be installed on vehicles used in race applications or for racing purposes or for similar activities. (A "RACE" is defined as any contest between two or more vehicles, or any contest of one or more vehicle against the clock, whether or not such contest is for a prize). This warranty does not include coverage for police or taxi vehicles, race vehicles, or vehicles used for government or commercial purposes. Also excluded from this warranty are sales outside of the United States of America.

Installation of most suspension products will raise the center of gravity of the vehicle and will cause the vehicle to handle differently than stock. It may increase the vehicle's susceptibility to a rollover, on road and off road, at all speeds. Extreme care should be taken to operate the vehicle safely at all times to prevent rollover or loss of control resulting in serious injury or death. Fabtech front end Desert Guards may impair the deployment or operation of vehicles equipped with supplemental restraining systems/air bag systems and should not be installed if the vehicle is equipped as so.

Fabtech makes every effort to ensure suspension product compatibility with all vehicles listed in the catalog, but due to unknown auto manufacturers production changes and/or inconsistencies by the auto manufacturer, Fabtech cannot be responsible for 100% compatibility, including the fitment of tire and wheel sizes listed. The Tire and Wheel sizes listed in Fabtech's catalog are only a guideline for street driving with noted fender trimming. Fabtech is not responsible for damages to the vehicle's body or tires.

Fabtech's obligation under this warranty is limited to the repair or replacement, at Fabtech option, of the defective product only. All costs of removal, installation or re-installation, freight charges, incidental or consequential damages are expressly excluded from this warranty. Fabtech is not responsible for damages and/or warranty of other vehicle parts related or non related to the installed Fabtech product. This warranty is expressly in lieu of all other warranties expressed or implied. This warranty shall not apply to any product that has been subject to accident, negligence, alteration, abuse or misuse as determined by Fabtech.

Fabtech suspension components must be installed as a complete system including shocks as shown in our current catalog. All warranties will become void if Fabtech parts are combined and/or substituted with other aftermarket suspension products. Combination and/or substitution of other aftermarket suspension parts may cause premature wear and/or product failure resulting in an accident causing injury or death. Fabtech does not warrant products not manufactured by Fabtech.

Installation of Fabtech product may void the vehicles factory warranty; it is the consumer's responsibility to check with their local vehicle's dealer for warranty disposition before the installation of the product.

It is the responsibility of the distributor and/or the retailer to review all warranties and warnings of Fabtech products with the consumer prior to purchase.

Fabtech reserves the right to supercede, discontinue, change the design, finish, part number and, or application of parts when deemed necessary without written notice. Fabtech is not responsible for misprints or typographical errors within the catalog or price sheet.