



**Fabtech Performance Suspension**  
4331 Eucalyptus Ave. Chino, Ca. USA 91710  
Tech Line: 909-597-7800 Fax: 909-597-7185 Web: [www.fabtechmotorsports.com](http://www.fabtechmotorsports.com)

## **INSTALLATION INSTRUCTIONS**

**FTS422-50BK**  
**1999-2004 FORD SUPER DUTY 2WD & 4WD**  
**REAR DUAL SHOCK KIT**

### **PARTS LIST:**

<b>Qty</b>	<b>Part #</b>	<b>Description</b>
2	FT30044BK	Side Plate
1	FT30045BK	Cross Bar
1	FT30046BK	Support Tube Driver
1	FT30047BK	Support Tube Pass.
2	FT30036BK	Rear Lower Shock Mount
4	FT735U	U-Bolt
1	FT30048	Hardware Kit
1	FT422-50i	Instruction Sheet
1	FT12H	1/2" Hardware

### **HARDWARE:**

<b>Qty</b>	<b>Description</b>
2	3/4"-16 x 1 1/2" Bolt
2	3/4" SAE Flat Washer
8	10mm - 1.5 x 40mm Bolt
8	10mm Flat Washers
1	1/4"-20 x 1" Bolt
2	1/4" SAE Flat Washer
1	1/4"-20 Nyloc Nut
2	1/2"-13 x 1 1/4" Bolt
4	1/2"-13 x 6" Bolt
6	1/2"-13 Nyloc Nut
20	1/2" SAE Flat Washer
1	Thread Locking Compound

**CHECK ALL PARTS INCLUDED IN THIS KIT TO THE PARTS LIST ABOVE BEFORE BEGINNING INSTALLATION OF THE KIT. IF ANY PIECES ARE MISSING, CONTACT FABTECH AT 909-597-7800**

### **TOOL LIST: (NOT INCLUDED)**

- **FLOOR JACK & JACK STANDS**
- **ASSORTED METRIC AND S.A.E SOCKETS & WRENCHES**
- **TORQUE WRENCH**
- **DRILL WITH 1/2" DRILL BIT**

## **BEFORE YOU BEGIN INSTALLATION PLEASE READ THE FOLLOWING:**

DO NOT ALTER THE FINISH OF THESE COMPONENTS, EXAMPLE- CHROMING, ZINC PLATING OR PAINTING. CHANGING THE FINISH CAN CAUSE STRUCTURAL FATIGUE OF COMPONENTS.

THIS KIT WILL NOT WORK WITH A FACTORY REAR SWAY BAR. THE SWAY BAR WILL NEED TO BE REMOVED

READ ALL INSTRUCTIONS THOROUGHLY FROM START TO FINISH BEFORE BEGINNING INSTALLATION! IF THESE INSTRUCTIONS ARE NOT PROPERLY FOLLOWED, SEVERE FRAME, DRIVELINE AND / OR SUSPENSION DAMAGE MAY RESULT.

CHECK ALL PARTS INCLUDED IN THIS KIT TO THE PARTS LIST ABOVE BEFORE BEGINNING INSTALLATION OF THE KIT. IF ANY PIECES ARE MISSING, CONTACT FABTECH AT 909-597-7800.

See listing below for correct shock application:

### Super Duty F-250 & F-350 4wd

Stock height –	FTS7333	Qty. 4
5.5" Fabtech Lift –	FTS7266	Qty. 4
8" Fabtech Lift –	FTS7266	Qty. 4

### Super Duty F-250 & F-350 2wd

4" Fabtech Lift –	FTS7299	Qty. 4
6" Fabtech Lift –	FTS7333	Qty. 4

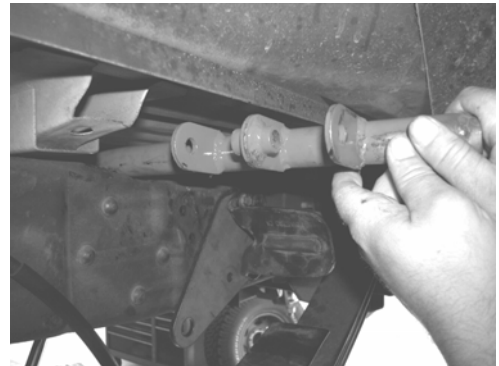
## **THE INSTALLATION OF THIS SUSPENSION SYSTEM SHOULD BE PERFORMED BY A PROFESSIONAL MECHANICS.**

### ***INSTRUCTIONS:***

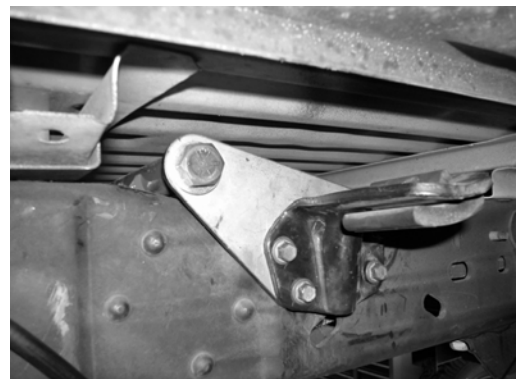
1. Disconnect the negative terminal on the battery. With the vehicle on level ground set the emergency brake and block the front tires. Jack up the rear end of the truck and support the frame rails with jack stands. **NEVER WORK UNDER AN UNSUPPORTED VEHICLE!** Remove the rear tires. Support the rear axle with a floor jack just enough so that axle does not hang freely.
2. Remove the spare tire from the under side of the truck. **THE SPARE TIRE WILL NOT BE ABLE TO BE STORED UNDER THE TRUCK WITH THE INSTALLATION OF THIS REAR DUAL SHOCK KIT.**
3. Working from both sides of the truck, remove the rear shocks and discard.
4. Remove the factory rear overload spring stop from the frame. Discard bolts and save nut the tabs and overload spring stops. SEE PHOTO BELOW.



5. Locate the supplied FT30045 cross tube. From the driver side fender well, slide the cross tube into the truck placing it on top of the frame. SEE PHOTO BELOW.



6. Locate the supplied FT30044BK side plates. Attach to the frame along with the previously removed over load spring stop using the supplied 10mm x 40mm bolts, washers, and stock nut tabs. Torque to 35 ft lbs.
7. Attach the cross tube to the side plates using the supplied 3/4" x 1 1/2" bolt and washer. Leave Loose at this time. SEE PHOTO BELOW.

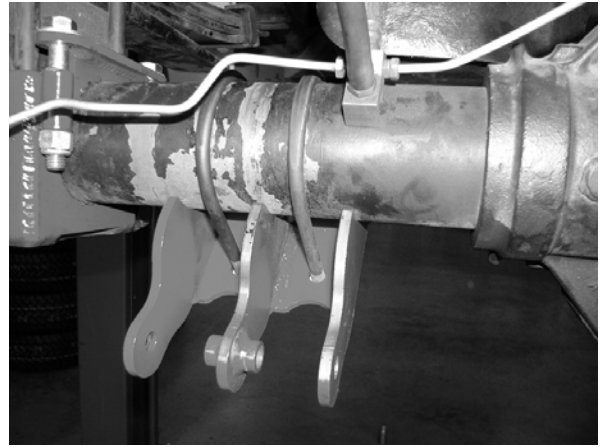


8. Working from the driver side, locate the supplied FT30046BK support tube for the driver side of the truck, along with the proper length shocks for the height of your truck. Attach the two shocks and the support tube to the cross tube with the supplied  $\frac{1}{2}$ " x 6" bolt, nut, and washers, and allow the shocks to hang freely. The support tube will be placed against the inside tab on the cross tube. When installing the shocks use a supplied  $\frac{1}{2}$ " washer between the shock and the center tab on both shocks. Leave loose.
9. With the support tube loosely attached to the cross tube, swing the support tube up until it makes contact with the spare tire mount frame. Using a drill with a  $\frac{1}{2}$ " drill bit, drill out the hole on the spare tire mount frame the support tubes lines up with. **USE CARE NOT TO DRILL THROUGH THE BED OF THE TRUCK.**



10. Attach the support tube to the spare tire frame using the supplied  $\frac{1}{2}$ " x 1  $\frac{1}{4}$ " bolt, nut, and washers. Leave loose.
11. Repeat steps eight through ten on the passenger side of the truck. Torque support tube bolts to 65 ft lbs.

12. Working from the driver side of the truck, locate the factory lower shock mount on the axle. Remove and discard bracket and hardware.
13. Locate the new Fabtech Lower Shock Mount FT30036. Place onto the axle in the stock location. Attach to the axle with the new supplied FT735U U-Bolts and  $\frac{1}{2}$ " hardware



14. Repeat steps twelve and thirteen on the passenger side of the truck. Torque u-bolts to 65 ft lbs.
15. On the passenger side of the truck, locate the factory brake line tab and re-bolt it to the new lower shock mount using the supplied  $\frac{1}{4}$ " bolt, nut, and washer.
16. Torque the two  $\frac{3}{4}$ " cross bar bolts to 95 ft lbs.

:

## **RETORQUE ALL NUTS, BOLTS AND LUGS AFTER 50 MILES AND PERIODICALLY THEREAFTER.**

For technical assistance call: 909-597-7800

### **Product Warranty and Warnings-**

Fabtech provides a Limited Lifetime Warranty to the original retail purchaser who owns the vehicle, on which the product was originally installed, for defects in workmanship and materials.

The Limited Lifetime Warranty excludes the following Fabtech items; bushings, bump stops, ball joints, tie rod ends, limiting straps, cross shafts, heim joints. These parts are subject to wear and are not considered defective when worn. They are warranted for 60 days from the date of purchase for defects in workmanship.

Take apart shocks are considered a serviceable shock with a one year warranty on leakage only. Service seal kits are available separately for future maintenance. All other shocks are covered under our Limited Lifetime Warranty.

Fabtech does not warrant any product for finish, alterations, modifications and/or installation contrary to Fabtech's instructions. Alterations to the finish of the parts including but not limited to painting, powdercoating, plating and/or welding will void all warranties. Some finish damage may occur to parts during shipping which is considered normal and is not covered under warranty.

Fabtech products are not designed nor intended to be installed on vehicles used in race applications or for racing purposes or for similar activities. (A "RACE" is defined as any contest between two or more vehicles, or any contest of one or more vehicle against the clock, whether or not such contest is for a prize). This warranty does not include coverage for police or taxi vehicles, race vehicles, or vehicles used for government or commercial purposes. Also excluded from this warranty are sales outside of the United States of America.

Installation of most suspension products will raise the center of gravity of the vehicle and will cause the vehicle to handle differently than stock. It may increase the vehicle's susceptibility to a rollover, on road and off road, at all speeds. Extreme care should be taken to operate the vehicle safely at all times to prevent rollover or loss of control resulting in serious injury or death. Fabtech front end Desert Guards may impair the deployment or operation of vehicles equipped with supplemental restraining systems/air bag systems and should not be installed if the vehicle is equipped as so.

Fabtech makes every effort to ensure suspension product compatibility with all vehicles listed in the catalog, but due to unknown auto manufacturers production changes and/or inconsistencies by the auto manufacturer, Fabtech cannot be responsible for 100% compatibility, including the fitment of tire and wheel sizes listed. The Tire and Wheel sizes listed in Fabtech's catalog are only a guideline for street driving with noted fender trimming. Fabtech is not responsible for damages to the vehicle's body or tires.

Fabtech's obligation under this warranty is limited to the repair or replacement, at Fabtech option, of the defective product only. All costs of removal, installation or re-installation, freight charges, incidental or consequential damages are expressly excluded from this warranty. Fabtech is not responsible for damages and/or warranty of other vehicle parts related or non related to the installed Fabtech product. This warranty is expressly in lieu of all other warranties expressed or implied. This warranty shall not apply to any product that has been subject to accident, negligence, alteration, abuse or misuse as determined by Fabtech.

Fabtech suspension components must be installed as a complete system including shocks as shown in our current catalog. All warranties will become void if Fabtech parts are combined and/or substituted with other aftermarket suspension products. Combination and/or substitution of other aftermarket suspension parts may cause premature wear and/or product failure resulting in an accident causing injury or death. Fabtech does not warrant products not manufactured by Fabtech.

Installation of Fabtech product may void the vehicles factory warranty; it is the consumer's responsibility to check with their local vehicle's dealer for warranty disposition before the installation of the product.

It is the responsibility of the distributor and/or the retailer to review all warranties and warnings of Fabtech products with the consumer prior to purchase.

Fabtech reserves the right to supercede, discontinue, change the design, finish, part number and, or application of parts when deemed necessary without written notice. Fabtech is not responsible for misprints or typographical errors within the catalog or price sheet.