



Installation Instructions

FTS51001 99-06 GM K1500 4WD Multiple Frt. Shock System

FTS51001 PARTS LIST-

1	FT20041	Upper Hoop- DRV
1	FT20042	Upper Hoop- PASS
2	FT20043	Lower Mount
1	FT20046	Hardware Kit

FT20046 HARDWARE LIST

4	1/2"-13 x 6" Hex Cap Bolt
4	1/2"-13 Nyloc Lock Nut
8	1/2" SAE Flat Washer
8	1/2" USS Washer
8	3/8"-16 x 1-1/4" Hex Cap Bolt
4	3/8"-16 x 2" Hex Cap Bolt
4	3/8"-16 x 2-3/4" Hex Cap Bolt
4	3/8"-16 x 1-1/2" Hex Cap Bolt
20	3/8"-16 Steel Lock Nut
40	3/8" SAE Flat Washer
1	Thread Locking Compound

SHOCKS REQUIRED- (NOT INCLUDED)

4- Fabtech FTS7052 Shocks

TOOL LIST- (NOT INCLUDED)

Assorted Metric & SAE Sockets & Wrenches
Drill, 3/8" Drill Bit, Torque Wrench

READ ALL INSTRUCTIONS THOROUGHLY FROM START TO FINISH BEFORE BEGINNING INSTALLATION! IF THESE INSTRUCTIONS ARE NOT PROPERLY FOLLOWED, SEVERE FRAME, DRIVELINE AND / OR SUSPENSION DAMAGE MAY RESULT. CHECK FOR FRAME AND SUSPENSION DAMAGE PRIOR TO INSTALLTION. THIS KIT DOES NOT REQUIRE WELDING FOR INSTALLATION. DO NOT WELD ANY OF THESE COMPONENTS. THE INSTALLATION OF THIS KIT SHOULD BE PERFORMED BY A PROFESSIONAL MECHANIC.

NOTE: THIS SHOCK SYSTEM IS ONLY COMPATABLE WITH A VEHICLE WITH A FABTECH SUSPENSION SYSTEM OR STOCK SUSPENSION

INSTALLATION-

1. Disconnect the negative terminal on the battery. With the vehicle on flat ground, set parking brake and block rear tires. Jack up front of vehicle and support under frame with jack stands. Remove driverside tire and wheel.
2. Working from the driver side of the vehicle, locate and remove the steering box bolt on the outside of the frame rail closest to the upper control arm.
3. Locate and remove the nut and washer that retains the stock lower control arm pivot bolt towards the rear of the vehicle. Do not remove the bolt, only the nut and washer.

4. Locate the driverside upper shock hoop and place the rear leg mount over the stock rear lower control arm bolt and attach with the stock nut and washer. Leave loose. SEE BELOW PHOTO



5. Place the front leg of the hoop over the removed steering box bolt hole and reinstall the stock steering box bolt, nut and washer. Leave loose.

6. Pushing on the top of the hoop mate the upper mounting tabs to the top of the upper control arm pocket and centerpunch holes. Drill out to 3/8" diameter. Install 3/8" x 1-1/4" bolts, nuts and washers. Torque to 25LBS. SEE BELOW PHOTOS

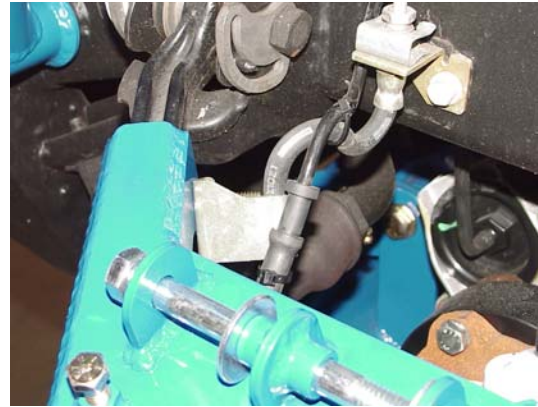
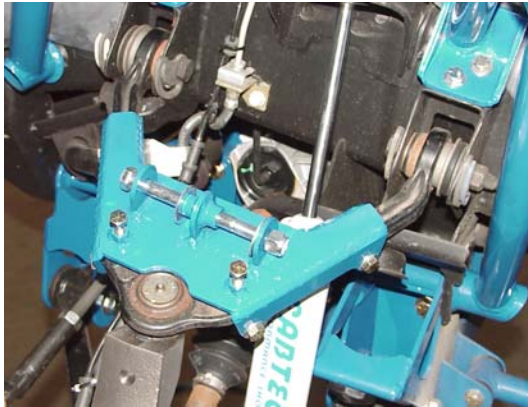


7. Tighten the steering box bolt to 90LBS and the lower control arm rear bolt to 90LBS

8. Locate the brake hose retaining clamp on the upper control arm and remove from arm. Clamp the bracket securely and drill out bolthole to 3/8" diameter. SEE BELOW PHOTO

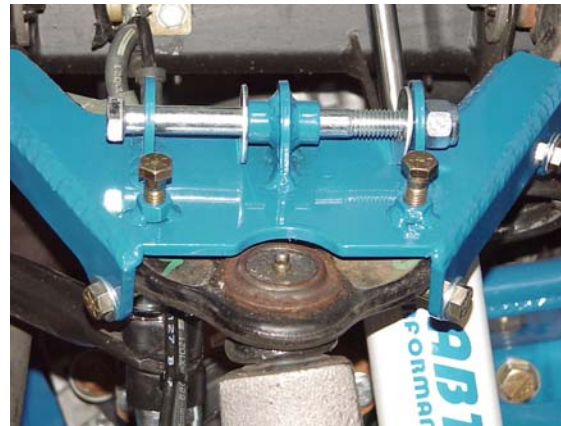


9. Locate the lower shock mount and place over the factory upper control arm. Using 3/8" x 2" cross bolts, nuts and washers attach arm with the brake hose retaining clamp to the inside of the control arm. Note must use 3/8" x 2" bolts on the mount eyes closest to frame to allow for shock clearance. Use 3/8" x 2-3/4" bolts, nuts and washers for the mount holes to the outside of the vehicle under the control arm. Leave all bolts loose. SEE BELOW PHOTOS



10. Locate and thread 3/8" x 1-1/2" bolt with thread locking compound into the welded nuts on the top of the lower shock mount and tighten against the stock control arm. Snug up bolts only, do not over tighten.

11. Torque the 3/8" cross bolts to 25LBS



12. Locate and install Fabtech shocks part number FTS7052 using 1/2" x 5-3/4" bolts, nuts and washers. Torque bolt to 35LBS.



13. Repeat same procedure for passenger side. Except step two, remove the factory differential mounting bolt on the side of the frame rather than the steering box bolt. For ease of installation cut 5/8" off the end of the rear differential mounting bolt that protrudes through the frame. Follow all other steps the same as the driverside.

14. Check the front-end alignment and set to the factory specifications.

RETORQUE ALL NUTS, BOLTS AND LUGS AFTER 50 MILES AND PERIODICALLY THEREAFTER.

For technical assistance call: 909-597-7800

Product Warranty and Warnings-

Fabtech provides a Limited Lifetime Warranty to the original retail purchaser who owns the vehicle, on which the product was originally installed, for defects in workmanship and materials.

The Limited Lifetime Warranty excludes the following Fabtech items; bushings, bump stops, ball joints, tie rod ends, limiting straps, cross shafts, heim joints. These parts are subject to wear and are not considered defective when worn. They are warranted for 60 days from the date of purchase for defects in workmanship.

Take apart shocks are considered a serviceable shock with a one year warranty on leakage only. Service seal kits are available separately for future maintenance. All other shocks are covered under our Limited Lifetime Warranty.

Fabtech does not warrant any product for finish, alterations, modifications and/or installation contrary to Fabtech's instructions. Alterations to the finish of the parts including but not limited to painting, powdercoating, plating and/or welding will void all warranties. Some finish damage may occur to parts during shipping which is considered normal and is not covered under warranty.

Fabtech products are not designed nor intended to be installed on vehicles used in race applications or for racing purposes or for similar activities. (A "RACE" is defined as any contest between two or more vehicles, or any contest of one or more vehicle against the clock, whether or not such contest is for a prize). This warranty does not include coverage for police or taxi vehicles, race vehicles, or vehicles used for government or commercial purposes. Also excluded from this warranty are sales outside of the United States of America.

Installation of most suspension products will raise the center of gravity of the vehicle and will cause the vehicle to handle differently than stock. It may increase the vehicle's susceptibility to a rollover, on road and off road, at all speeds. Extreme care should be taken to operate the vehicle safely at all times to prevent rollover or loss of control resulting in serious injury or death. Fabtech front end Desert Guards may impair the deployment or operation of vehicles equipped with supplemental restraining systems/air bag systems and should not be installed if the vehicle is equipped as so.

Fabtech makes every effort to ensure suspension product compatibility with all vehicles listed in the catalog, but due to unknown auto manufacturers production changes and/or inconsistencies by the auto manufacturer, Fabtech cannot be responsible for 100% compatibility, including the fitment of tire and wheel sizes listed. The Tire and Wheel sizes listed in Fabtech's catalog are only a guideline for street driving with noted fender trimming. Fabtech is not responsible for damages to the vehicle's body or tires.

Fabtech's obligation under this warranty is limited to the repair or replacement, at Fabtech option, of the defective product only. All costs of removal, installation or re-installation, freight charges, incidental or consequential damages are expressly excluded from this warranty. Fabtech is not responsible for damages and/or warranty of other vehicle parts related or non related to the installed Fabtech product. This warranty is expressly in lieu of all other warranties expressed or implied. This warranty shall not apply to any product that has been subject to accident, negligence, alteration, abuse or misuse as determined by Fabtech.

Fabtech suspension components must be installed as a complete system including shocks as shown in our current catalog. All warranties will become void if Fabtech parts are combined and/or substituted with other aftermarket suspension products. Combination and/or substitution of other aftermarket suspension parts may cause premature wear and/or product failure resulting in an accident causing injury or death. Fabtech does not warrant products not manufactured by Fabtech.

Installation of Fabtech product may void the vehicles factory warranty; it is the consumer's responsibility to check with their local vehicle's dealer for warranty disposition before the installation of the product.

It is the responsibility of the distributor and/or the retailer to review all warranties and warnings of Fabtech products with the consumer prior to purchase.

Fabtech reserves the right to supercede, discontinue, change the design, finish, part number and, or application of parts when deemed necessary without written notice. Fabtech is not responsible for misprints or typographical errors within the catalog or price sheet.