



Installation Instructions

FTS61004BK 1988-2013 GM C/K1500 Traction Bars

1988-06 Extra Cab & Crew Cab

2007 - **2013** Crew Cab (only)

Qty	Part #	Description
1	FT90001	Traction Bar – Pass
1	FT90002	Traction Bar – Driv
2	FT20375BK	Frame Bracket
1	FT90006	Axle Mount – Drv
1	FT90007	Axle Mount – Pass
1	FT90008	Hardware Kit
1	FT90022	Bushing Kit

FT90008 HW Kit	
8	1/2-13 x 1-1/2" Hex Cap Bolt
8	1/2-13 Nylon Lock Nut
16	1/2" SAE Flat Washer
4	9/16-12 x 4-1/2" Hex Cap Bolt
4	9/16-12 Nylon Lock Nut
8	9/16" SAE Flat Washer

CHECK ALL PARTS INCLUDED IN THIS KIT TO THE PARTS LIST ABOVE BEFORE BEGINNING INSTALLATION OF THE KIT. IF ANY PIECES ARE MISSING, CONTACT FABTECH AT 909-597-7800

TOOL LIST- (NOT INCLUDED)

Assorted Metric & SAE Sockets & Wrenches

Drill, ½" Drill Bit, Torque Wrench

1 ¾ Hole Saw

READ ALL INSTRUCTIONS THOROUGHLY FROM START TO FINISH BEFORE BEGINNING INSTALLATION! IF THESE INSTRUCTIONS ARE NOT PROPERLY FOLLOWED, SEVERE FRAME, DRIVELINE AND / OR SUSPENSION DAMAGE MAY RESULT.

CHECK FOR FRAME AND SUSPENSION DAMAGE PRIOR TO INSTALLTION. THIS KIT DOES NOT REQUIRE WELDING FOR INSTALLATION. DO NOT WELD ANY OF THESE COMPONENTS.

THE INSTALLATION OF THIS KIT SHOULD BE PERFORMED BY A PROFESSIONAL MECHANIC.

INSTALLATION-

1. Disconnect the negative terminal on the battery. Locate traction bars and install bushings and sleeves in to each end of the traction bars.
2. With the vehicle on flat ground, set parking brake and block tires.
3. YOU SHOULD ONLY PERFORM THE FOLLOWING STEP FROM ONE SIDE OF THE VEHICLE AT A TIME. Working from the driver side of the vehicle, remove the rear axle u bolt nuts and washers only, leaving the stock u bolts and bottom plate on the vehicle. Do not loosen the passenger side at this time.
4. Locate the driver side axle bracket and place up to the bottom of the factory u bolt plate. Using the stock u bolt nuts and washers tighten the bracket to 90 LBS. SEE PHOTO BELOW

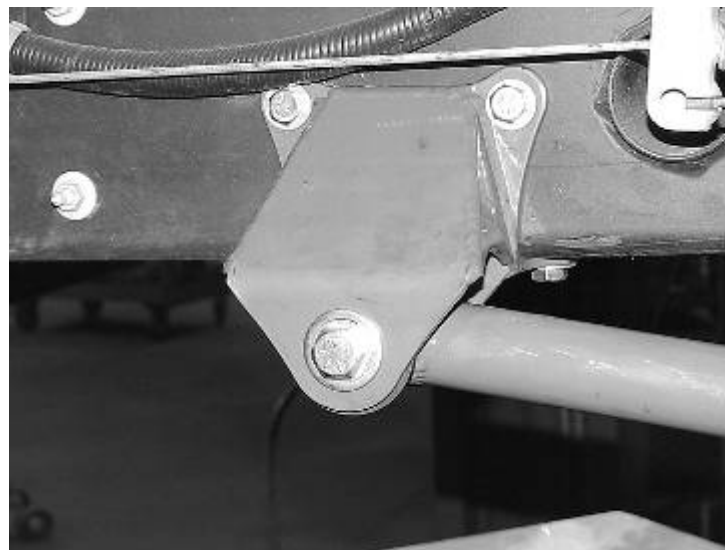
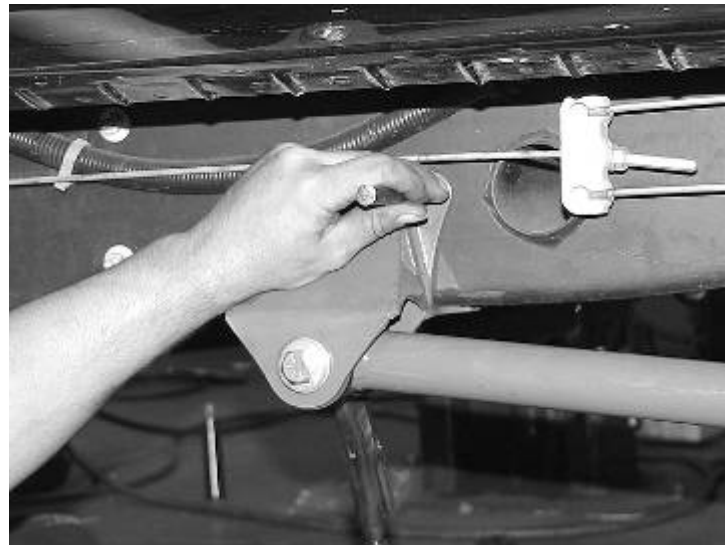


5. With the vehicle on the ground, locate and attach the rear eye of the traction bar bushing to the axle mount using 9/16" x 4-1/2" Bolt, nut and washers, leave loose. NOTE: WHEN MOUNTING THE TRACION BAR, MOUNT THE DIMPLE DIE SECTION OF THE BAR ON THE TOP SIDE (UP). THIS WILL MAXIMIZE YOUR GROUND CLEARANCE.
6. Locate the frame mount and attach it to other end of the traction bar busing using 9/16" x 4-1/2" Bolt, nut and washers leave loose.

FOLLOW STEPS #7 THROUGH #9 FOR 1988 – 2006 MODEL TRUCKS

FOLLOW STEPS #10 THROUGH #13 FOR 2007 - 2013 MODEL YEAR TRUCKS

7. Swing the frame mount up to the bottom of the frame with the tires on the ground and center punch the bracket holes to the frame. Check the inside of the frame for electrical or hoses that may be in line with the holes to be drilled. Drill frame to 1/2" diameter and attach the frame mount using 1/2" x 1-1/2" Bolts, nuts and washers and torque to 75LBS. SEE BELOW PHOTOS

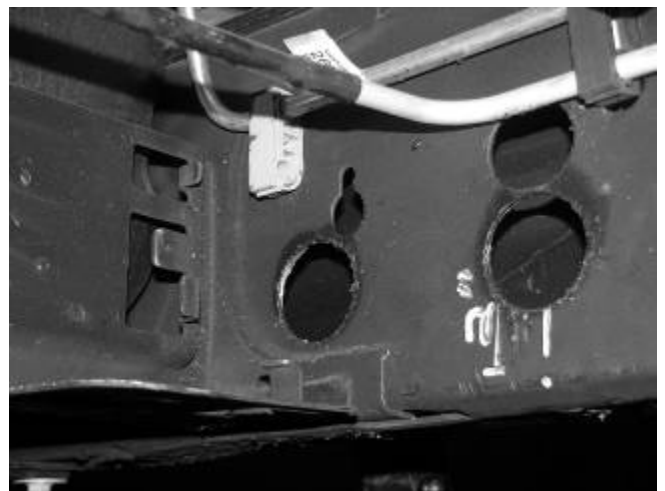


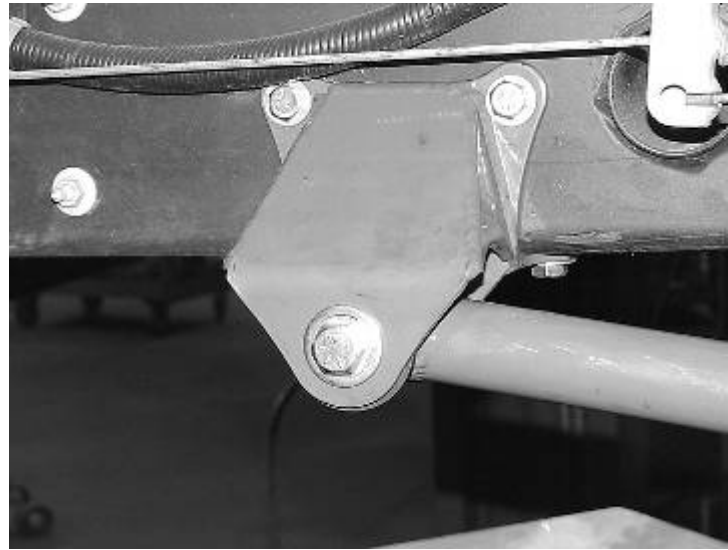
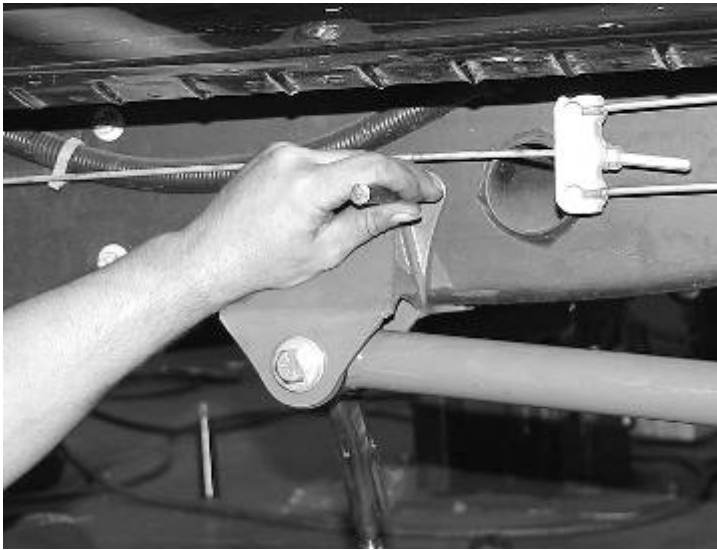
8. Tighten the 9/16" x 4-1/2" bushing bolts to 95LBS.

9. Repeat same procedure for passenger side
**For 2007 - 2013 model trucks, you
will need to drill two 1 3/4" holes
into the
inside of the frame rail.**

10. Working from the driver side, swing the frame mount up to the bottom of the frame with the tires on the ground and center punch the bracket holes to the frame. Drill out the four holes from the bracket to the frame.

11. Remove the charcoal canister from the inside of the frame rail. Measure and mark 2" upward from the newly drilled holes on the bottom of the frame to the inside face of the frame. Use a 1 3/4" hole saw and drill the two holes into the frame. Attach the frame mount using 1/2" x 1-1/2" Bolts, nuts and washers and torque to 75LBS. Re-attach the charcoal canister and all the connections. SEE PHOTOS BELOW





12. Tighten the 9/16" x 4-1/2" bushing bolts to 95LBS.

13. Repeat same procedure for passenger side.

RETORQUE ALL NUTS, BOLTS AND LUGS AFTER 50 MILES AND PERIODICALLY THEREAFTER.
For technical assistance call: 909-597-7800

Product Warranty and Warnings-

Fabtech provides a Limited Lifetime Warranty to the original retail purchaser who owns the vehicle, on which the product was originally installed, for defects in workmanship and materials.

The Limited Lifetime Warranty excludes the following Fabtech items; bushings, bump stops, ball joints, tie rod ends, limiting straps, cross shafts, heim joints. These parts are subject to wear and are not considered defective when worn. They are warranted for 60 days from the date of purchase for defects in workmanship.

Take apart shocks are considered a serviceable shock with a one year warranty on leakage only. Service seal kits are available separately for future maintenance. All other shocks are covered under our Limited Lifetime Warranty.

Fabtech does not warrant any product for finish, alterations, modifications and/or installation contrary to Fabtech's instructions. Alterations to the finish of the parts including but not limited to painting, powdercoating, plating and/or welding will void all warranties. Some finish damage may occur to parts during shipping which is considered normal and is not covered under warranty.

Fabtech products are not designed nor intended to be installed on vehicles used in race applications or for racing purposes or for similar activities. (A "RACE" is defined as any contest between two or more vehicles, or any contest of one or more vehicle against the clock, whether or not such contest is for a prize). This warranty does not include coverage for police or taxi vehicles, race vehicles, or vehicles used for government or commercial purposes. Also excluded from this warranty are sales outside of the United States of America.

Installation of most suspension products will raise the center of gravity of the vehicle and will cause the vehicle to handle differently than stock. It may increase the vehicle's susceptibility to a rollover, on road and off road, at all speeds. Extreme care should be taken to operate the vehicle safely at all times to prevent rollover or loss of control resulting in serious injury or death. Fabtech front end Desert Guards may impair the deployment or operation of vehicles equipped with supplemental restraining systems/air bag systems and should not be installed if the vehicle is equipped as so.

Fabtech makes every effort to ensure suspension product compatibility with all vehicles listed in the catalog, but due to unknown auto manufacturers production changes and/or inconsistencies by the auto manufacturer, Fabtech cannot be responsible for 100% compatibility, including the fitment of tire and wheel sizes listed. The Tire and Wheel sizes listed in Fabtech's catalog are only a guideline for street driving with noted fender trimming. Fabtech is not responsible for damages to the vehicle's body or tires.

Fabtech's obligation under this warranty is limited to the repair or replacement, at Fabtech option, of the defective product only. All costs of removal, installation or re-installation, freight charges, incidental or consequential damages are expressly excluded from this warranty. Fabtech is not responsible for damages and/or warranty of other vehicle parts related or non related to the installed Fabtech product. This warranty is expressly in lieu of all other warranties expressed or implied. This warranty shall not apply to any product that has been subject to accident, negligence, alteration, abuse or misuse as determined by Fabtech.

Fabtech suspension components must be installed as a complete system including shocks as shown in our current catalog. All warranties will become void if Fabtech parts are combined and/or substituted with other aftermarket suspension products. Combination and/or substitution of other aftermarket suspension parts may cause premature wear and/or product failure resulting in an accident causing injury or death. Fabtech does not warrant products not manufactured by Fabtech.

Installation of Fabtech product may void the vehicles factory warranty; it is the consumer's responsibility to check with their local vehicle's dealer for warranty disposition before the installation of the product.

It is the responsibility of the distributor and/or the retailer to review all warranties and warnings of Fabtech products with the consumer prior to purchase.

Fabtech reserves the right to supercede, discontinue, change the design, finish, part number and, or application of parts when deemed necessary without written notice. Fabtech is not responsible for misprints or typographical errors within the catalog or price sheet.