



# Installation Instructions

## FTS62006 - Traction Bars 2011-2016 Ford F-250/F-350 Superduty

	<b>FTS62006</b>	<b>11-12 SUPERDUTY TRACTION BARS</b>
1	FT90094BK	TRACTION BAR 67" DRIVER BLACK
1	FT90095BK	TRACTION BAR 67" PASSENGER BLK
2	FT30372	TRACTION BAR FRAME MOUNT
2	FT90018	TRACTION BAR SHACKLE CLR ZINC
1	FT30734	TRACTION BAR BRACKET DRIV
1	FT30735	TRACTION BAR BRACKET PASS
2	FT90027	UPPER SD REAR TRACT BAR MT 99+
1	FT30488	HARDWARE SUBASSEMBLY
1	FT30487	HARDWARE KIT
	<b>FT30488</b>	<b>HARDWARE SUBASSEMBLY</b>
8	FT192	SLEEVE 1.250 X .750 X .570
4	FT749U	UBOLT RD 5/8-18X20.00X3.50
1	FT58H	NUT 5/8" AND WASHER KIT
6	FTS98003	3/4" ROD END L.D.
4	FT1004	SWAY BAR LINK BUSHING HALF
2	FT66	SLEEVE .625 X .509 X 2.000
1	FTREGCARD	REGISTRATION CARD
1	FTAS16	DRIVER WARNING DECAL
1	FTAS12	STICKER FT BLUE 10X4 DIE CUT
2	FT62006I	INSTRUCTIONS
8	FT20731	SPACER
	<b>FT30487</b>	<b>HARDWARE KIT</b>
22	50000005052	1/2 SAE WASHER G5 ZINC
16	50130003052	1/2-13 NYLOCK ZINC
4	50131251052	1/2-13 X 1-1/4 HEX BOLT G5 ZNC
4	50131751081	1/2-13 X 1-3/4 HEX BOLT G8 ZNC
2	50134001052	1/2-13 X 4 HEX BOLT G5 ZINC
12	75000005081	3/4 SAE WASHER G8 ZINC
6	75100004152	3/4-10 C-LOCK NUT ZINC
6	75102501081	3/4-10 X 2-1/2 HEX BOLT G8 ZNC
6	FTS50	JAM NUT 3/4 NF RH
4	50136001081	1/2-13 X 6 HEX BOLT G8 ZINC
1	FTLOCK	THREAD LOCKING COMPOUND 1 MIL

**CHECK ALL PARTS INCLUDED IN THIS KIT TO THE PARTS LIST ABOVE BEFORE BEGINNING INSTALLATION OF THIS KIT. IF ANY PIECES ARE MISSING, CONTACT FABTECH AT 909-597-7800.**

**READ ALL INSTRUCTIONS THOROUGHLY FROM START TO FINISH BEFORE BEGINNING INSTALLATION! THIS SYSTEM MUST BE INSTALLED WITH THE FABTECH FTS23006BK SUSPENSION SYSTEM. THIS SYSTEM WILL NOT WORK WITH A STOCK HEIGHT TRUCK.**

**SYSTEM IS DESIGNED FOR SINGLE REAR WHEEL (SRW) APPLICATIONS ONLY. SYSTEM WILL NOT WORK ON DUAL REAR WHEEL (DRW) APPLICATIONS.**

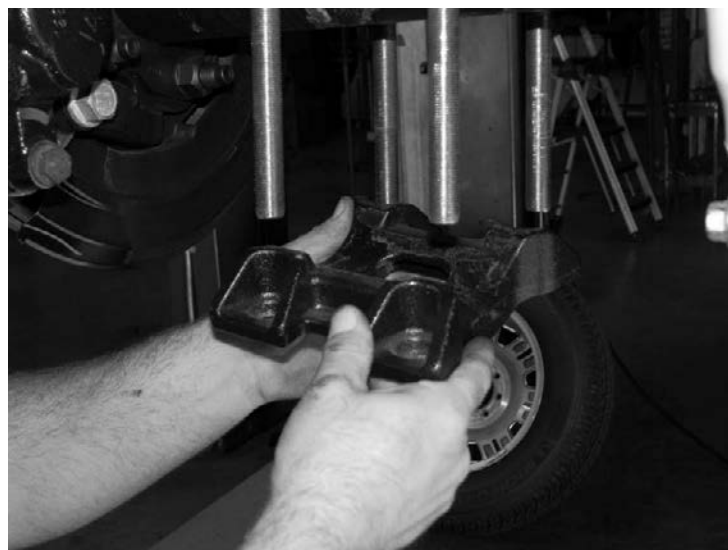
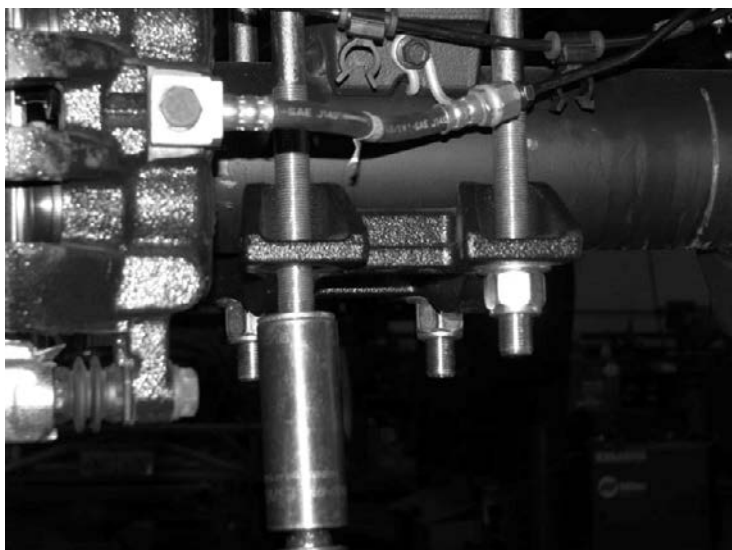
**NOTE: THIS KIT WILL NOT FIT A LONGBED CREWCAB VEHICLE.**

**TOOL LIST: (NOT INCLUDED)**

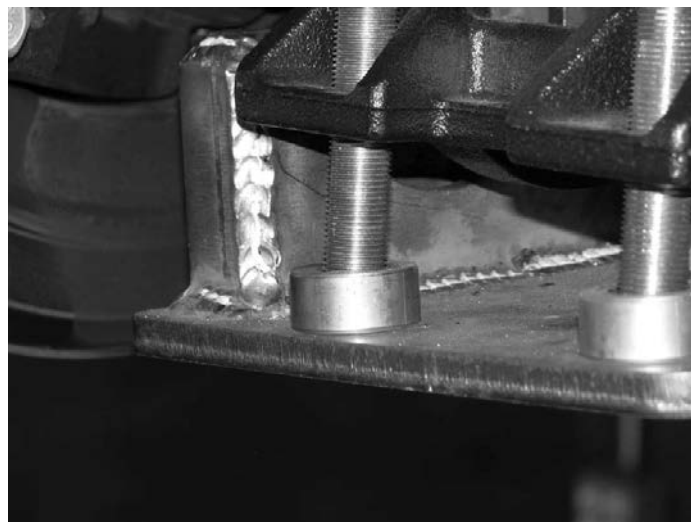
- **FLOOR JACK**
- **JACK STANDS**
- **ASSORTED METRIC AND S.A.E SOCKETS**
- **DRILL WITH ASSORTED BITS**

## **INSTRUCTIONS:**

1. Disconnect the negative terminal on the battery. Locate both Fabtech traction bars and install the supplied FTS98003 Heim joints into the single tube end. Locate FTS98003 Heim joints and install two into the end of the traction bar with the two-tube ends. You will need to thread them in so that 3/4" of thread (Including the Jam Nut) show. **A minimum amount of 1" of thread should be threaded into the traction bars at all times. Thread engagement will vary due to truck heights and long bed to short bed trucks. The solid rod ends will be mounted to the axle and the Heim will be mounted to the frame end.**
2. With the vehicle on flat ground, set parking brake and block tires.
3. **YOU SHOULD ONLY PERFORM THE FOLLOWING STEP FROM ONE SIDE OF THE VEHICLE AT A TIME.** Working from the driver side of the vehicle, locate the u-bolts and u-bolt plates and remove. **SEE PHOTO BELOW.**

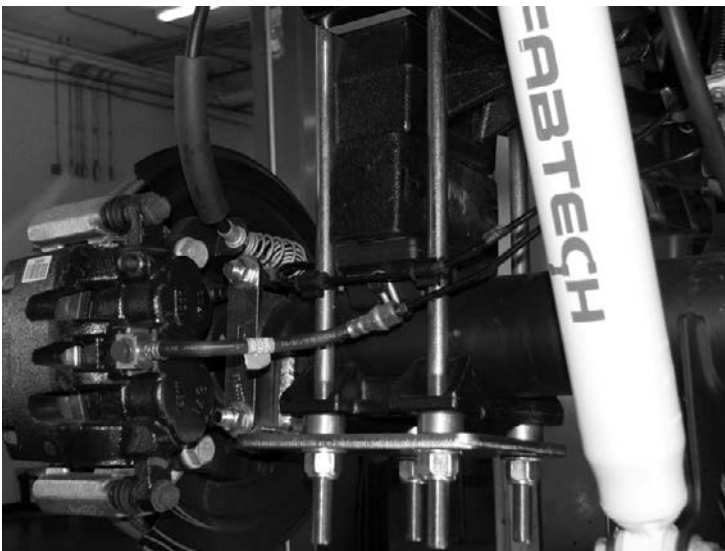
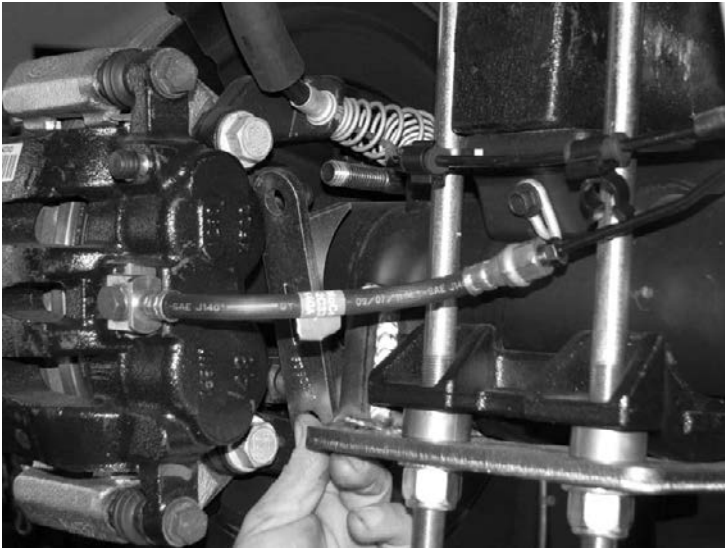


4. Locate the Fabtech lower axle bracket FT30734, upper axle bracket FT90027, four FT192 sleeves and FT749U u-bolts. Slide the new u-bolts over the top of the spring in the factory configuration with factory lower plate. Install the sleeves and lower bracket on to the u-bolts under the axle. Leave u-bolt nuts loose at this time. **SEE PHOTO BELOW.**



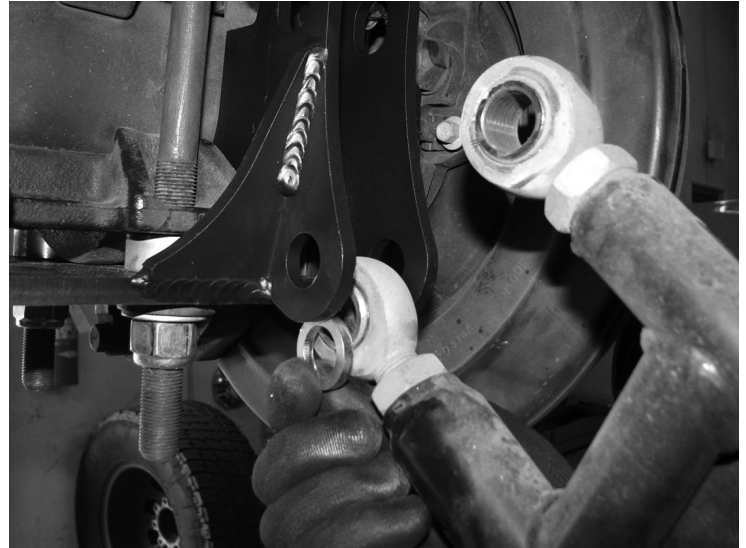


5. Using two 1/2-13 x 6" bolts, washers and nuts, install the FT90027 upper clamp bracket. Torque the u-bolt nuts to 254 ft-lbs and upper 1/2" hardware to 90 ft-lbs. SEE PHOTOS BELOW.



6. Locate the Fabtech Driver side traction bar FT90094BK. With the Heim Joints installed, connect the traction bar

(with the straight tube on the bottom and rounded support tube on the top) to the rear axle bracket with the supplied 3/4" x 2-1/2" bolts, washers, c-lock nuts and FT20731 spacers on each side of the Heim joints. Leave loose. SEE FIGURE



7. Locate the Fabtech shackle bracket FT90018 and install two FT1004 bushings and one FT66 sleeve into the end of the shackle with the barrel. With the supplied 3/4" x 2-1/2" bolt, washers and c-lock nuts, attach the traction bar to the Fabtech shackle. **Note: When attaching the Fabtech shackle to the traction bar make sure the bend in the shackle is facing towards the outer side of the truck.**
8. Locate the Fabtech frame bracket FT30372, attach the frame bracket to the shackle with the supplied 1/2" x 4" bolt. **Note: The bolt attaching the frame bracket to the shackle is only being used for positioning of the frame bracket at this time do not attach the nut to the bolt at this time.** With the frame bracket attached to the shackle raise the traction bar so the frame bracket comes in contact with the frame. When positioning the frame bracket to the frame, you will want the shackle to be straight up and down. To get the shackle to be straight up and down you will need to adjust the heim joints on the traction bars. With the frame bracket against the frame mark the lower holes and drill out to 1/2". Check the inside of the frame for electrical or hoses that may be in line with the holes to be drilled. Once drilled, remove the bolt attaching the shackle to the frame bracket and attach the frame bracket to the frame with the supplied 1/2" x 1-1/4" bolt, nuts and washers. Torque to 127 ft-lbs.
9. On the Fabtech frame bracket, locate the hole where the top of the bracket will be attached. Drill a 1/2" hole through the frame to allow the bolt to pass through. With the supplied 1/2" x 1-1/4" bolt, nut and washers, attach shackle with traction bar to the frame mount. Torque to 127 ft-lbs. SEE PHOTOS BELOW.



**FRONT OF TRUCK FACING THE REAR**

10. Torque rear axle bracket bolts to 127 ft-lbs. Torque the 3/4" Heim bolts to 100 ft-lbs.
11. Repeat same procedure for passenger side.

**\*\* USE THE SUPPLIED THREAD-LOCKING COMPOUND ON ALL HARDWARE.**

## S.A.E. Bolt Torque Specification Chart

Grade 5



Grade 8



Metric



**Standard**

**Metric**

	<b>Grade 5</b>	<b>Grade 8</b>		<b>Grade 8.8</b>	<b>Grade 10.9</b>
SIZE	ft. lbs.	ft. lbs.	SIZE	ft. lbs.	ft. lbs.
1/4"	10	14	M-6	7	12
5/16"	21	29	M-8	17	29
3/8"	37	52	M-10	35	58
7/16"	59	83	M-12	65	100
1/2"	90	127	M-14	100	160
9/16"	129	184	M-16	150	240
5/8"	179	254	M-18	200	300
3/4"	317	450	M-20	300	400

## **RETORQUE ALL NUTS, BOLTS AND LUGS AFTER 50 MILES AND PERIODICALLY THEREAFTER.**

For technical assistance call: 909-597-7800

### **Product Warranty and Warnings-**

Fabtech provides a Limited Lifetime Warranty to the original retail purchaser who owns the vehicle, on which the product was originally installed, for defects in workmanship and materials.

The Limited Lifetime Warranty excludes the following Fabtech items; bushings, bump stops, ball joints, tie rod ends, limiting straps, cross shafts, heim joints. These parts are subject to wear and are not considered defective when worn. They are warranted for 60 days from the date of purchase for defects in workmanship.

Take apart shocks are considered a serviceable shock with a one year warranty on leakage only. Service seal kits are available separately for future maintenance. All other shocks are covered under our Limited Lifetime Warranty.

Fabtech does not warrant any product for finish, alterations, modifications and/or installation contrary to Fabtech's instructions. Alterations to the finish of the parts including but not limited to painting, powdercoating, plating and/or welding will void all warranties. Some finish damage may occur to parts during shipping which is considered normal and is not covered under warranty.

Fabtech products are not designed nor intended to be installed on vehicles used in race applications or for racing purposes or for similar activities. (A "RACE" is defined as any contest between two or more vehicles, or any contest of one or more vehicle against the clock, whether or not such contest is for a prize). This warranty does not include coverage for police or taxi vehicles, race vehicles, or vehicles used for government or commercial purposes. Also excluded from this warranty are sales outside of the United States of America.

Installation of most suspension products will raise the center of gravity of the vehicle and will cause the vehicle to handle differently than stock. It may increase the vehicle's susceptibility to a rollover, on road and off road, at all speeds. Extreme care should be taken to operate the vehicle safely at all times to prevent rollover or loss of control resulting in serious injury or death. Fabtech front end Desert Guards may impair the deployment or operation of vehicles equipped with supplemental restraining systems/air bag systems and should not be installed if the vehicle is equipped as so.

Fabtech makes every effort to ensure suspension product compatibility with all vehicles listed in the catalog, but due to unknown auto manufacturers production changes and/or inconsistencies by the auto manufacturer, Fabtech cannot be responsible for 100% compatibility, including the fitment of tire and wheel sizes listed. The Tire and Wheel sizes listed in Fabtech's catalog are only a guideline for street driving with noted fender trimming. Fabtech is not responsible for damages to the vehicle's body or tires.

Fabtech's obligation under this warranty is limited to the repair or replacement, at Fabtech option, of the defective product only. All costs of removal, installation or re-installation, freight charges, incidental or consequential damages are expressly excluded from this warranty. Fabtech is not responsible for damages and/or warranty of other vehicle parts related or non-related to the installed Fabtech product. This warranty is expressly in lieu of all other warranties expressed or implied. This warranty shall not apply to any product that has been subject to accident, negligence, alteration, abuse or misuse as determined by Fabtech.

Fabtech suspension components must be installed as a complete system including shocks as shown in our current catalog. All warranties will become void if Fabtech parts are combined and/or substituted with other aftermarket suspension products. Combination and/or substitution of other aftermarket suspension parts may cause premature wear and/or product failure resulting in an accident causing injury or death. Fabtech does not warrant products not manufactured by Fabtech.

Installation of Fabtech product may void the vehicles factory warranty; it is the consumer's responsibility to check with their local vehicle's dealer for warranty disposition before the installation of the product.

It is the responsibility of the distributor and/or the retailer to review all warranties and warnings of Fabtech products with the consumer prior to purchase.

Fabtech reserves the right to supercede, discontinue, change the design, finish, part number and, or application of parts when deemed necessary without written notice. Fabtech is not responsible for misprints or typographical errors within the catalog or price sheet.