



www.fabtechmotorsports.com

**4331 EUCALYPTUS AVE ~~ CHINO, CA 91710**  
**PHONE 909-597-7800 \*\* FAX 909-597-7185**  
**2001 - 2007 GM 2500HD**  
**FTS91002BK Front Hydraulic Bump Stop Kit**

**Parts List:**

<b>Qu a</b>	<b>Part #</b>	<b>Description</b>
2	FTS84006	Hyd Bump Stop
1	FT20268BK	Drv Side Hyd. Bump Mount
1	FT20269BK	Pass Side Hyd Bump Mount
4	50131251081	1/2"-13 x 1 1/4" Hex Cap Bolt
4	50130004152	1/2"-13 C-Lock Nut
8	50000005081	1/2" SAE Flat Washer
4	43141751081	7/16"-14 x 1 3/4" Hex Bolt
4	43140003052	7/16"-14 Nylock Nut
8	43000005081	7/16" SAE Flat Washer
2	FT91002i	Instruction Sheet
2	FT21033i	Instruction Sheet

**THIS SYSTEM CAN ONLY BE USED WITH THE FABTECH 9" COILOVER CONVERSION SYSTEM**

**CHECK ALL PARTS INCLUDED IN THIS KIT TO THE PARTS LIST ABOVE BEFORE BEGINNING  
INSTALLATION OF THIS KIT. IF ANY PIECES ARE MISSING, CONTACT FABTECH AT 909-597-7800.**

**READ ALL INSTRUCTIONS THOROUGHLY FROM START TO FINISH BEFORE BEGINNING INSTALLATION!**

**THIS KIT CAN ONLY BE INSTALLED WITH FABTECH'S 6" OR 8" COIL OVER CONVERSION SYSTEMS.**

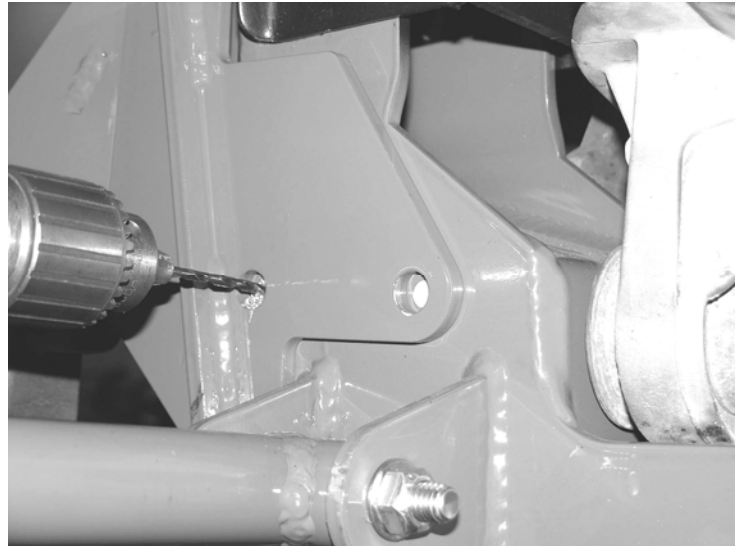
**FOLLOW THE CARE AND WARRANTY INSTRUCTIONS SUPPLIED IN THE DIRT LOGIC BUMP STOP BOX**

**TOOL LIST: (NOT INCLUDED)**

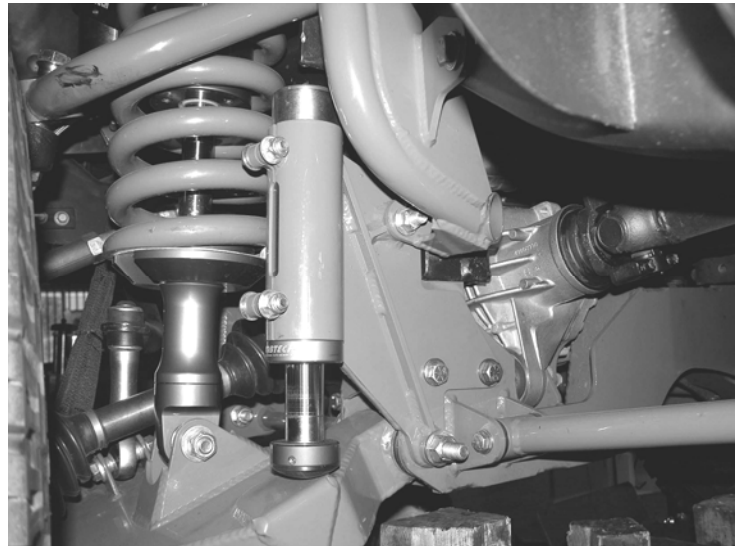
- Floor Jack(s)
- Jack Stands
- Assorted Metric & S.A.E Sockets
- Drill With 1/2" Bit
- Torque Wrench

## **INSTRUCTIONS:**

1. Disconnect the negative terminal on the battery. Jack up the front end of the truck and support the front frame rails with jack stands. **NEVER WORK UNDER AN UNSUPPORTED VEHICLE!** Remove the front tires.
2. If you are adding this Hydraulic Bump Stop kit to a truck that already has a Fabtech coil over kit installed, you will need to disassemble and remove the both driver and passenger front knuckle assemblies, 4.0 coil over's, previously installed Fabtech bumpstops, and lower control arms. Save all these parts and hardware except the original Fabtech bumpstop mounts. They will all be re-installed.
3. Working from the driver's side, locate FT20268 (driver) Hydraulic bump stop mount and FTS84006 Hydraulic bump stop. Insert the hydraulic bump stop into the mount by sliding the bump stop in from the bottom up. Using the supplied 7/16"-14x 1 3/4" bolts, nuts, and washers clinch the bump stop into the can. Make sure that the collar of the bump stop is flush with the bottom of the mount. **TORQUE TO 35 FT LBS. Over tightening these bolts will cause the bump stop to hang up inside the mount after being compressed. DO NOT OVER TORQUE.**
4. Locate the original 5/8" x 6 3/4" and 1/2" x 5 3/4" bolts with the hardware. Install the 5/8" bolt into the rear crossmember lower control arm pivot hole. Position the bumpstop mount to the back of the crossmember and onto the 5/8" bolt, leave loose. Swing the mount up and install the 1/2" x 5 3/4" bolt to the crossmember, bumpstop mount, and the shock hoop and tighten both bolts at this time **(ONLY TIGHTEN THE BOLTS ENOUGH TO HOLD THE BUMPSTOP BRACKET IN PLACE)..**
5. Using a drill with a 1/2" bit, drill the two holes for the bumpstop bracket into the rear of the crossmember. **(You will not need to drill the crossmember if you have removed the Fabtech Basic bumpstop from the Long Travel Suspension System. The Hydraulic Mount bolts to the crossmember in the same location)** Locate the supplied 1/2" x 1 1/4" bolts with the hardware and install. Torque the 1/2" bolts to 75 ft. lbs and remove the 5/8" hardware and save for installation of the lower control arms. Re-assemble the lower control arm, 4.0 coilovers, and knuckle assembly if removed or continue with installation of the Long Travel suspension per that kits instruction. SEE PHOTO IN NEXT COLUMN.



**Only drill the crossmember during a complete suspension system install**



6. Repeat steps three through five on the passenger side of the truck.
7. Recheck all nuts and bolts for proper torque tightness before driving. Grease all the zerc fittings in all of the new rod ends and in all the factory steering components. Drive the truck for 50 miles and have it aligned to factory specifications. Re-torque all the hardware after 500 miles.

**RETORQUE ALL NUTS, BOLTS AND LUGS AFTER 50 MILES AND PERIODICALLY THEREAFTER.**

For technical assistance call: 909-597-7800

## Product Warranty and Warnings-

Fabtech provides a Limited Lifetime Warranty to the original retail purchaser who owns the vehicle, on which the product was originally installed, for defects in workmanship and materials.

The Limited Lifetime Warranty excludes the following Fabtech items; bushings, bump stops, ball joints, tie rod ends, limiting straps, cross shafts, heim joints. These parts are subject to wear and are not considered defective when worn. They are warranted for 60 days from the date of purchase for defects in workmanship.

Take apart shocks are considered a serviceable shock with a one year warranty on leakage only. Service seal kits are available separately for future maintenance. All other shocks are covered under our Limited Lifetime Warranty.

Fabtech does not warrant any product for finish, alterations, modifications and/or installation contrary to Fabtech's instructions. Alterations to the finish of the parts including but not limited to painting, powdercoating, plating and/or welding will void all warranties. Some finish damage may occur to parts during shipping which is considered normal and is not covered under warranty.

Fabtech products are not designed nor intended to be installed on vehicles used in race applications or for racing purposes or for similar activities. (A "RACE" is defined as any contest between two or more vehicles, or any contest of one or more vehicle against the clock, whether or not such contest is for a prize). This warranty does not include coverage for police or taxi vehicles, race vehicles, or vehicles used for government or commercial purposes. Also excluded from this warranty are sales outside of the United States of America.

Installation of most suspension products will raise the center of gravity of the vehicle and will cause the vehicle to handle differently than stock. It may increase the vehicle's susceptibility to a rollover, on road and off road, at all speeds. Extreme care should be taken to operate the vehicle safely at all times to prevent rollover or loss of control resulting in serious injury or death. Fabtech front end Desert Guards may impair the deployment or operation of vehicles equipped with supplemental restraining systems/air bag systems and should not be installed if the vehicle is equipped as so.

Fabtech makes every effort to ensure suspension product compatibility with all vehicles listed in the catalog, but due to unknown auto manufacturers production changes and/or inconsistencies by the auto manufacturer, Fabtech cannot be responsible for 100% compatibility, including the fitment of tire and wheel sizes listed. The Tire and Wheel sizes listed in Fabtech's catalog are only a guideline for street driving with noted fender trimming. Fabtech is not responsible for damages to the vehicle's body or tires.

Fabtech's obligation under this warranty is limited to the repair or replacement, at Fabtech option, of the defective product only. All costs of removal, installation or re-installation, freight charges, incidental or consequential damages are expressly excluded from this warranty. Fabtech is not responsible for damages and/or warranty of other vehicle parts related or non related to the installed Fabtech product. This warranty is expressly in lieu of all other warranties expressed or implied. This warranty shall not apply to any product that has been subject to accident, negligence, alteration, abuse or misuse as determined by Fabtech.

Fabtech suspension components must be installed as a complete system including shocks as shown in our current catalog. All warranties will become void if Fabtech parts are combined and/or substituted with other aftermarket suspension products. Combination and/or substitution of other aftermarket suspension parts may cause premature wear and/or product failure resulting in an accident causing injury or death. Fabtech does not warrant products not manufactured by Fabtech.

Installation of Fabtech product may void the vehicles factory warranty; it is the consumer's responsibility to check with their local vehicle's dealer for warranty disposition before the installation of the product.

It is the responsibility of the distributor and/or the retailer to review all warranties and warnings of Fabtech products with the consumer prior to purchase.

Fabtech reserves the right to supercede, discontinue, change the design, finish, part number and, or application of parts when deemed necessary without written notice. Fabtech is not responsible for misprints or typographical errors within the catalog or price sheet.