



www.fabtechmotorsports.com

**4331 EUCALYPTUS AVE ~~ CHINO, CA 91710
PHONE 909-597-7800 ** FAX 909-597-7185**

**2001 - 2007 GM 2500HD
FTS91003BK Rear Hydraulic Bump Stop Kit**

Parts List:

Qu a	Part #	Description
2	FT20334BK	Frame Mount
2	FT20335BK	Lower Bumpstop Pad
2	FT90078	Limit Strap 18"
2	FT20337BK	Lower Limit Strap Mount
2	FTS84006	Hyd. Bump Stop
6	37161001052	3/8"-16 x 1" Hex Cap Bolt
6	37160003052	3/8"-16 Ny-Lock Nut
12	37000005052	3/8" SAE Flat Washer
20	43141251052	7/16"-14 x 1 1/4" Hex Cap Bolt
20	43140003052	7/16"-14 Ny-Lock Nut
40	43000005052	7/16" SAE Flat Washer
4	50131501081	1/2"-13 x 1 1/2" Hex Cap Bolt
4	50130003052	1/2"-13 Ny-Lock Nut
8	50000005081	1/2" SAE Flat Washer
2	FT91003i	Instruction Sheet

THIS SYSTEM CAN ONLY BE INSTALLED WITH THE FABTECH REAR LONG TRAVEL LEAF SPRINGS AND HANGER SYSTEM.

CHECK ALL PARTS INCLUDED IN THIS KIT TO THE PARTS LIST ABOVE BEFORE BEGINNING INSTALLATION OF THIS KIT. IF ANY PIECES ARE MISSING, CONTACT FABTECH AT 909-597-7800.

READ ALL INSTRUCTIONS THOROUGHLY FROM START TO FINISH BEFORE BEGINNING INSTALLATION!

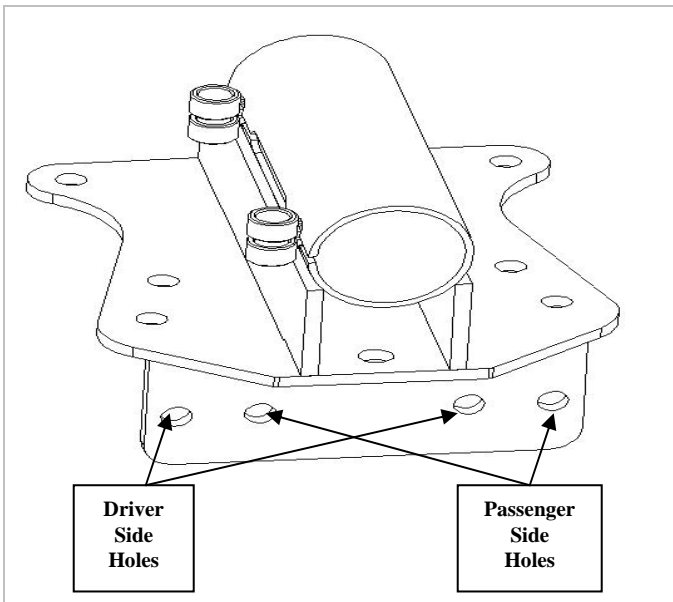
FOLLOW THE CARE AND WARRANTY INSTRUCTIONS SUPPLIED IN THE DIRT LOGIC BUMP STOP BOX

TOOL LIST: (NOT INCLUDED)

- Floor Jack(s)
- Jack Stands
- Assorted Metric & S.A.E Sockets
- Drill With 1/2" Bit
- Torque Wrench

INSTRUCTIONS:

1. Disconnect the negative terminal on the battery. Jack up the front end of the truck and support the rear frame rails with jack stands. **NEVER WORK UNDER AN UNSUPPORTED VEHICLE!** Remove the rear tires.
2. Working from the driver's side, locate and remove the rear bumpstops and discard with the hardware. Remove the nut holding the brake line bracket and save. Locate FT20334BK Frame Mount and position it on the face of the frame. Use the provided 7/16" hardware and attach the bracket to the frame using **front** hole on the new bracket and the two holes in the bottom of the frame where the bumpstops were originally mounted and the brake line mount. Tighten the brake line nut and the 7/16" hardware. Use a paint pen or center punch to mark the remaining five holes in the face of the mount into the frame. Remove the mount from the frame. SEE DIAGRAM BELOW



3. Use a drill with a 7/16 drill bit and drill the five new holes into the frame. Use caution not to drill into any of the brake or electrical lines. Re-install the mount back to the frame and attach with the 7/16" hardware and the factory brake line mount.
4. Locate FTS84006 Hydraulic bump stop. Insert the hydraulic bump stop into the mount by sliding the bump stop in from the bottom up. Using the supplied 7/16"-14x 1 3/4" bolts, nuts, and washers clinch the bump stop into the can. Make sure that the collar of the bump stop is flush with the bottom of the mount. **TORQUE TO 35 FT LBS. Over tightening these bolts will cause the bump stop to hang up inside the mount after being compressed. DO NOT OVER TORQUE.** SEE PHOTO

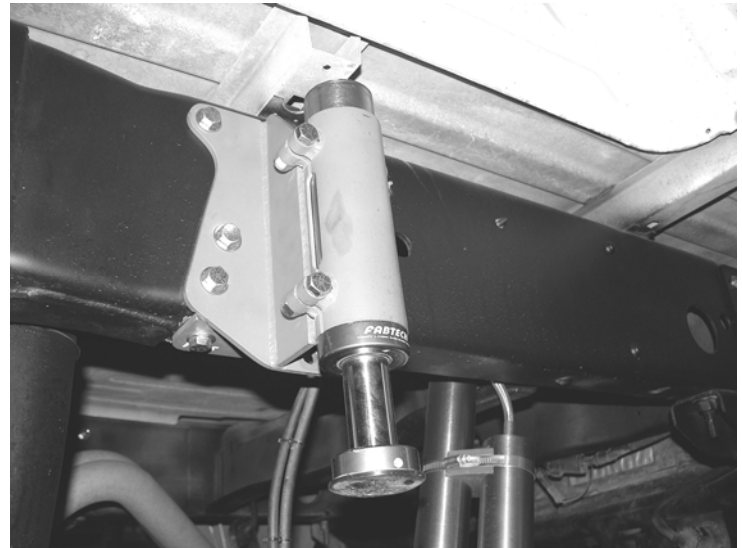
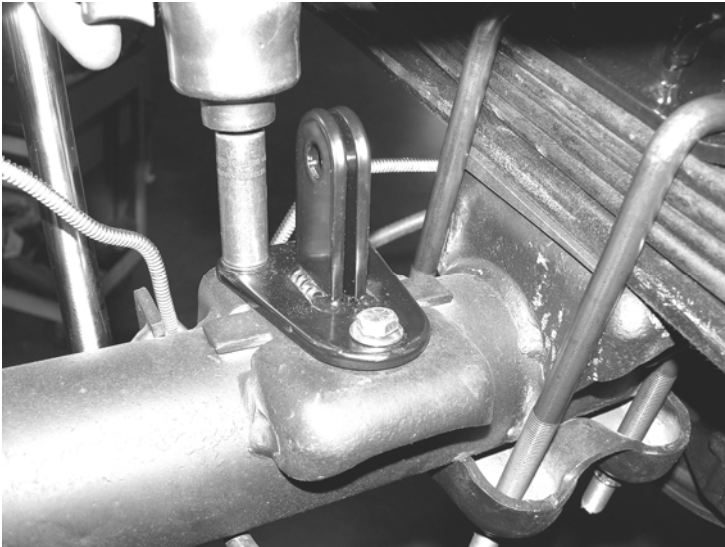
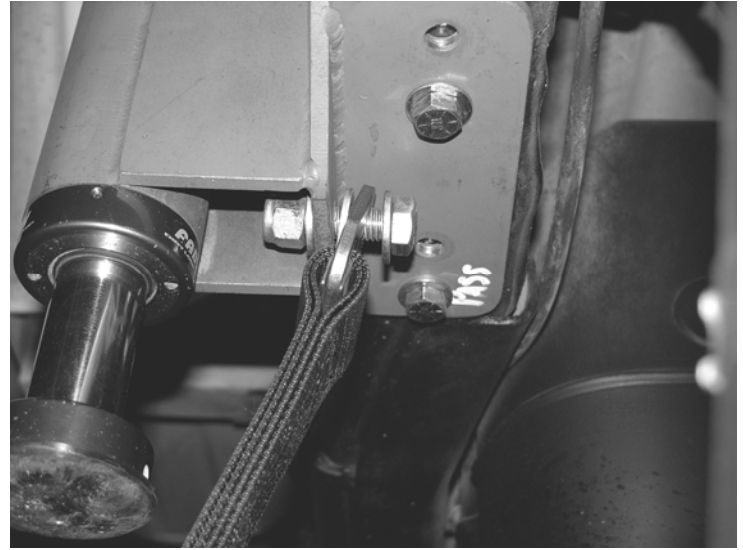
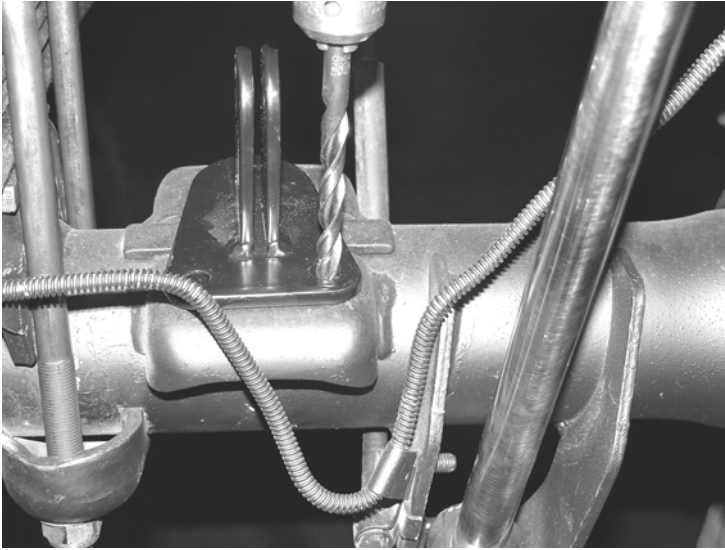


Photo of Driver Side

5. Supporting the rear differential, remove and save the U-bolt nuts. Push the U-bolts up off of the spring plate and discard. Locate FT20335 Lower Bumpstop Pad and position it onto of the springs in place of the factory spring plates. Reposition the U-bolts onto the new pad and torque to U-Bolts to 90lbs. SEE PHOTO BELOW



6. Locate FT20337 Lower Limit Strap Mount and place onto the factory bumpstop pad on the axle. Center the mount on the pad and use a paint pen or center punch to mark the holes in the mount into the frame. Remove the mount from the frame and use a drill with a 3/8" drill bit and drill the three holes on the pad. Re-position the mount onto the pad and attach using the supplied 3/8" hardware. Torque to 30lbs. SEE PHOTO ON NEXT PAGE



7. Locate FT90078 Limit Strap and supplied ½" hardware. Attach the limit strap to the bottom of the Bumpstop Frame mount with the ½" hardware. Torque to 75 lbs. Carefully raise the floor jack just enough to raise the axle and insert the end of the limit strap and attach using the supplied ½" hardware. Torque to 75 lbs. SEE PHOTOS IN NEXT COLUMN

8. Repeat steps two through seven on the passenger side of the truck.
9. Recheck all nuts and bolts for proper torque tightness before driving. Drive the truck for 50 miles and re-torque all the hardware.

RETORQUE ALL NUTS, BOLTS AND LUGS AFTER 50 MILES AND PERIODICALLY THEREAFTER.

For technical assistance call: 909-597-7800

Product Warranty and Warnings-

Fabtech provides a Limited Lifetime Warranty to the original retail purchaser who owns the vehicle, on which the product was originally installed, for defects in workmanship and materials.

The Limited Lifetime Warranty excludes the following Fabtech items; bushings, bump stops, ball joints, tie rod ends, limiting straps, cross shafts, heim joints. These parts are subject to wear and are not considered defective when worn. They are warranted for 60 days from the date of purchase for defects in workmanship.

Take apart shocks are considered a serviceable shock with a one year warranty on leakage only. Service seal kits are available separately for future maintenance. All other shocks are covered under our Limited Lifetime Warranty.

Fabtech does not warrant any product for finish, alterations, modifications and/or installation contrary to Fabtech's instructions. Alterations to the finish of the parts including but not limited to painting, powdercoating, plating and/or welding will void all warranties. Some finish damage may occur to parts during shipping which is considered normal and is not covered under warranty.

Fabtech products are not designed nor intended to be installed on vehicles used in race applications or for racing purposes or for similar activities. (A "RACE" is defined as any contest between two or more vehicles, or any contest of one or more vehicle against the clock, whether or not such contest is for a prize). This warranty does not include coverage for police or taxi vehicles, race vehicles, or vehicles used for government or commercial purposes. Also excluded from this warranty are sales outside of the United States of America.

Installation of most suspension products will raise the center of gravity of the vehicle and will cause the vehicle to handle differently than stock. It may increase the vehicle's susceptibility to a rollover, on road and off road, at all speeds. Extreme care should be taken to operate the vehicle safely at all times to prevent rollover or loss of control resulting in serious injury or death. Fabtech front end Desert Guards may impair the deployment or operation of vehicles equipped with supplemental restraining systems/air bag systems and should not be installed if the vehicle is equipped as so.

Fabtech makes every effort to ensure suspension product compatibility with all vehicles listed in the catalog, but due to unknown auto manufacturers production changes and/or inconsistencies by the auto manufacturer, Fabtech cannot be responsible for 100% compatibility, including the fitment of tire and wheel sizes listed. The Tire and Wheel sizes listed in Fabtech's catalog are only a guideline for street driving with noted fender trimming. Fabtech is not responsible for damages to the vehicle's body or tires.

Fabtech's obligation under this warranty is limited to the repair or replacement, at Fabtech option, of the defective product only. All costs of removal, installation or re-installation, freight charges, incidental or consequential damages are expressly excluded from this warranty. Fabtech is not responsible for damages and/or warranty of other vehicle parts related or non related to the installed Fabtech product. This warranty is expressly in lieu of all other warranties expressed or implied. This warranty shall not apply to any product that has been subject to accident, negligence, alteration, abuse or misuse as determined by Fabtech.

Fabtech suspension components must be installed as a complete system including shocks as shown in our current catalog. All warranties will become void if Fabtech parts are combined and/or substituted with other aftermarket suspension products. Combination and/or substitution of other aftermarket suspension parts may cause premature wear and/or product failure resulting in an accident causing injury or death. Fabtech does not warrant products not manufactured by Fabtech.

Installation of Fabtech product may void the vehicles factory warranty; it is the consumer's responsibility to check with their local vehicle's dealer for warranty disposition before the installation of the product.

It is the responsibility of the distributor and/or the retailer to review all warranties and warnings of Fabtech products with the consumer prior to purchase.

Fabtech reserves the right to supercede, discontinue, change the design, finish, part number and, or application of parts when deemed necessary without written notice. Fabtech is not responsible for misprints or typographical errors within the catalog or price sheet.