



www.fabtechmotorsports.com

4331 EUCALYPTUS AVE ~~ CHINO, CA 91710
PHONE 909-597-7800 ** FAX 909-597-7185
05-07 Ford F-250/350 4wd
FTS92004 Front Limit Strap Kit for Dual Shock Kit

Parts List:

Qua	Part #	Description
2	FT30198	Lower Limit Strap Bracket
2	FT30242	Limit Strap 14" Quad
2	FT20132	Spacer
1	FT30243	Hardware Kit

Hardware List:

Qua	Description
2	1/2"-13 x 2" Hex Bolt
2	1/2"-13 x 1 1/4" Hex Bolt
4	1/2"-13 C-Lock Nut
8	1/2" SAE Flat Washer
2	18mm-2.5 x 130mm Hex Bolt
2	18mm-2.5 C-Lock Nut
4	18mm Flat Washer

CHECK ALL PARTS INCLUDED IN THIS KIT TO THE PARTS LIST ABOVE BEFORE BEGINNING INSTALLATION OF THIS KIT. IF ANY PIECES ARE MISSING, CONTACT FABTECH AT 909-597-7800.

READ ALL INSTRUCTIONS THOROUGHLY FROM START TO FINISH BEFORE BEGINNING INSTALLATION!

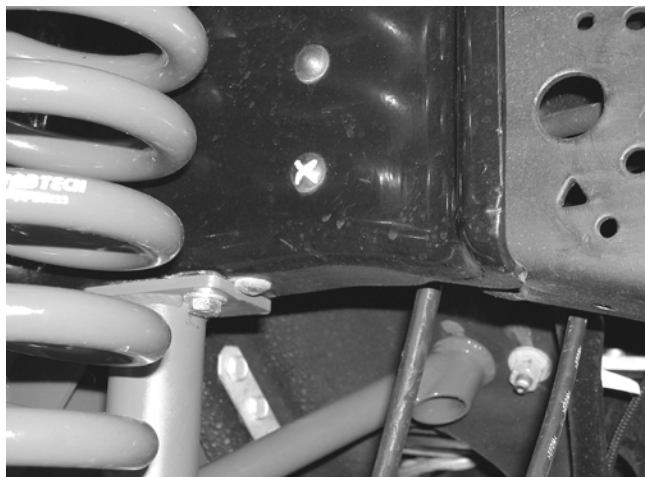
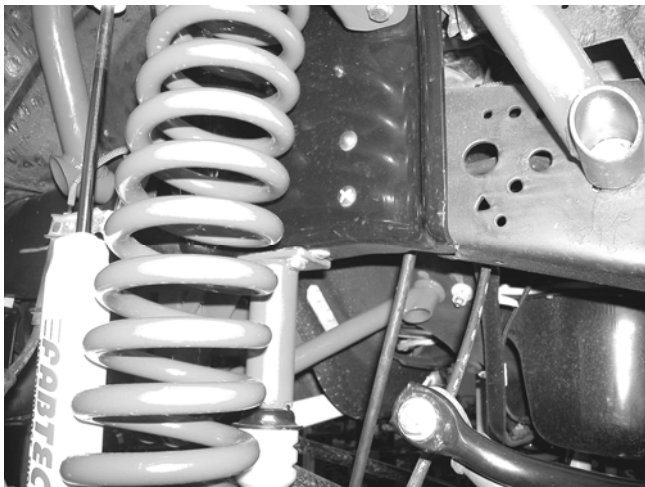
THIS KIT CAN ONLY BE INSTALLED WITH THE FABTECH DUAL SHOCK KIT

TOOL LIST: (NOT INCLUDED)

- Floor Jack(s)
- Jack Stands
- Assorted Metric & S.A.E Sockets
- Angle Grinder with grinding disc
- Air Hammer with center punch
- Drill w/ a 1/2" Drill Bit

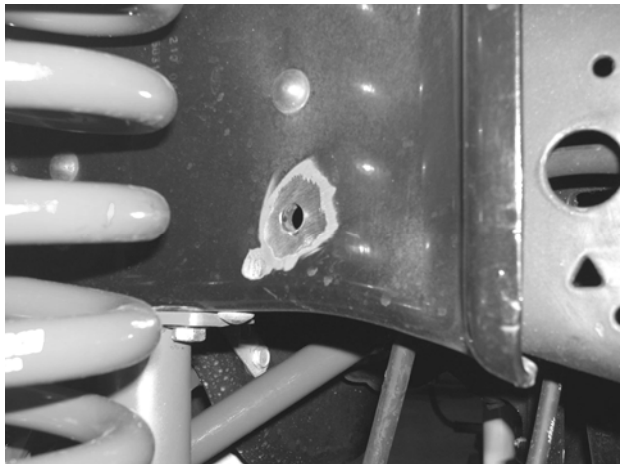
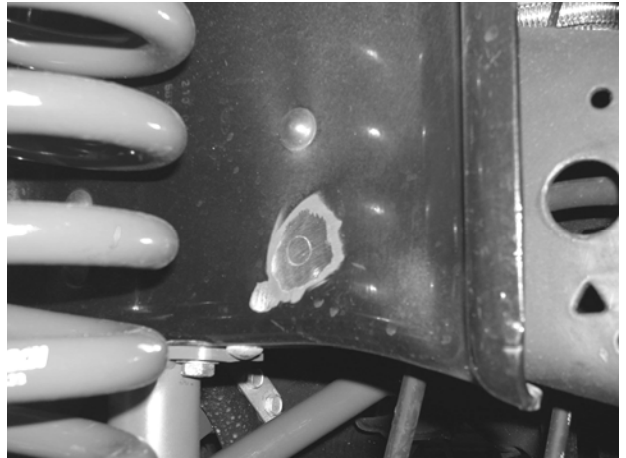
INSTRUCTIONS:

1. Disconnect the negative terminal on the battery. Jack up the front end of the truck and support the front frame rails with jack stands. **NEVER WORK UNDER AN UNSUPPORTED VEHICLE!** Remove the front tires.
2. Working from both sides of the truck, remove the brake calipers and tie them up out of the way. **DO NOT ALLOW THE CALIPERS TO HANG FROM THE BRAKE LINES!** Remove the brake line and ABS line tabs from the front side and the rear side of the coil spring mount on the axle and save the hardware.
3. Supporting the front axle with two floor jacks, remove the front shocks and the sway bar end links from the truck. Save all of the parts and hardware, they will be re-installed later in the install.
4. Lower the front axle allowing the coil springs to come free of tension. **EXERCISE EXTREME CAUTION WHEN WORKING WITH COIL SPRINGS UNDER LOAD!** Remove the coil springs from the truck and save with the factory upper coil isolator.
5. The bottom rear rivet in the coil bucket must be removed to mount the new limit strap. The front of the hoop has three rivets in line, and the rear has only two. SEE PHOTOS BELOW OF DRIVERS SIDE OF TRUCK.



Photos show coils installed for pictures only.
DO NOT install kit with coils installed

6. Using an angle grinder with a sanding disc, carefully sand the head of the rivet down until it is flush with the coil bucket. Then use an air hammer with a center punch to remove the body of the rivet from the bucket and frame. Next, using a drill with a 1/2" drill bit, drill out the rivet hole to accommodate the new 1/2" hardware. Spray paint the exposed metal on the coil bucket after it has cooled down from the grinding. SEE PHOTOS BELOW.



7. Locate the FT30192BK limit straps, FT20132 Strap Spacers and the supplied 1/2"x 2" bolts, nuts, and washers. Take the 1/2" bolt with a 1/2" washer and install it through the top of the limit strap. Then place the FT20132 spacer on the bolt on the backside of the strap and put it through the coil bucket followed by another 1/2" washer and C-lock nut. Leave loose at this time. SEE PICTURE BELOW.

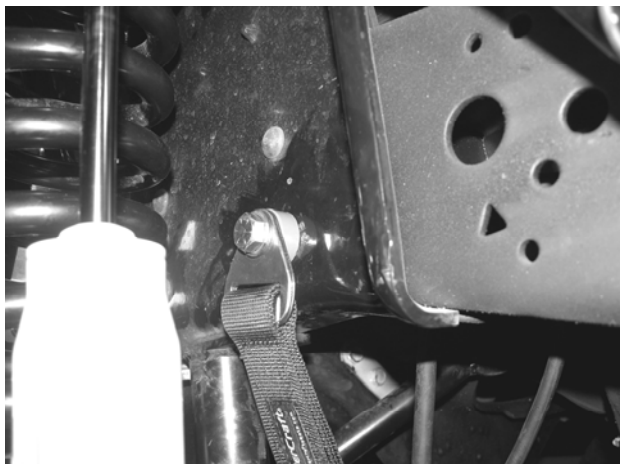


Photo shows completed install with shocks

8. Locate the upper axle pivot on the front axle. Remove the bolt and discard. Locate FT30198 lower limit strap bracket and attach to the inside of the upper pivot using the supplied 18mm x 130mm bolt, nut, and washer. If installing this kit on an 8" kit, the long end of the bracket will be facing upward and on a 6" kit the short end will be facing up. SEE PHOTOS BELOW.



Picture Shown With Tab Set Up For **8" Kit**



Picture Shown With Tab Set Up For **6" Kit**

9. Locate the previously removed springs, shocks, and hardware. Place the springs back onto the lower coil perches and into the coil buckets with the factory coil isolators. Using a floor jack raise the front axle enough to compress the front coils approx. 1". Install the front shocks with the original hardware and torque to 80lbs. Re-install the brake calipers and torque caliper bolts to 130lbs. Re-

install the Brake line and ABS line tabs back onto the coil spring perches using the original hardware.

10. Locate the supplied 1/2" x 1 1/4" bolt, nuts, and washers. Take the bolt and a washer and install it through the bottom of the limit strap. Then place it through the lower limit strap bracket followed by another 1/2" washer and C-lock nut. Torque the 1/2" strap bolts to 80lbs. and the 18mm lower pivot bolt to 175lbs. SEE PHOTO BELOW.

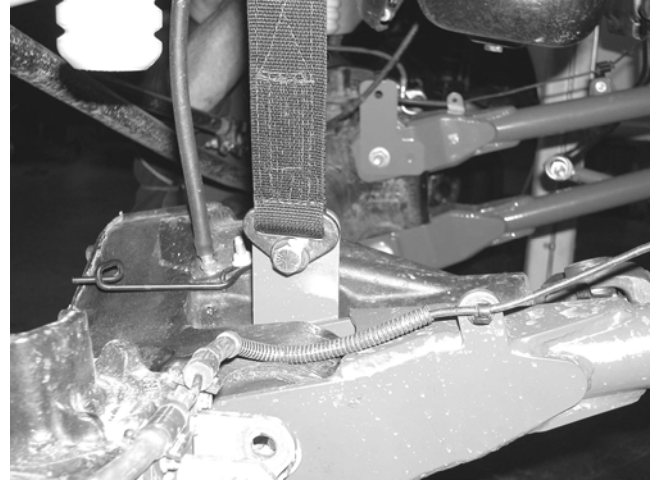


Photo shows strap installed without coil for picture ONLY

11. Re-install the front tires and set the truck back on the ground and torque the lug nuts to factory specs. Turn the steering wheel fully in each direction, check for contact between the tires and any newly installed components.

RETORQUE ALL NUTS, BOLTS AND LUGS AFTER 50 MILES AND PERIODICALLY THEREAFTER.

For technical assistance call: 909-597-7800

Product Warranty and Warnings-

Fabtech provides a Limited Lifetime Warranty to the original retail purchaser who owns the vehicle, on which the product was originally installed, for defects in workmanship and materials.

The Limited Lifetime Warranty excludes the following Fabtech items; bushings, bump stops, ball joints, tie rod ends, limiting straps, cross shafts, heim joints. These parts are subject to wear and are not considered defective when worn. They are warranted for 60 days from the date of purchase for defects in workmanship.

Take apart shocks are considered a serviceable shock with a one year warranty on leakage only. Service seal kits are available separately for future maintenance. All other shocks are covered under our Limited Lifetime Warranty.

Fabtech does not warrant any product for finish, alterations, modifications and/or installation contrary to Fabtech's instructions. Alterations to the finish of the parts including but not limited to painting, powdercoating, plating and/or welding will void all warranties. Some finish damage may occur to parts during shipping which is considered normal and is not covered under warranty.

Fabtech products are not designed nor intended to be installed on vehicles used in race applications or for racing purposes or for similar activities. (A "RACE" is defined as any contest between two or more vehicles, or any contest of one or more vehicle against the clock, whether or not such contest is for a prize). This warranty does not include coverage for police or taxi vehicles, race vehicles, or vehicles used for government or commercial purposes. Also excluded from this warranty are sales outside of the United States of America.

Installation of most suspension products will raise the center of gravity of the vehicle and will cause the vehicle to handle differently than stock. It may increase the vehicle's susceptibility to a rollover, on road and off road, at all speeds. Extreme care should be taken to operate the vehicle safely at all times to prevent rollover or loss of control resulting in serious injury or death. Fabtech front end Desert Guards may impair the deployment or operation of vehicles equipped with supplemental restraining systems/air bag systems and should not be installed if the vehicle is equipped as so.

Fabtech makes every effort to ensure suspension product compatibility with all vehicles listed in the catalog, but due to unknown auto manufacturers production changes and/or inconsistencies by the auto manufacturer, Fabtech cannot be responsible for 100% compatibility, including the fitment of tire and wheel sizes listed. The Tire and Wheel sizes listed in Fabtech's catalog are only a guideline for street driving with noted fender trimming. Fabtech is not responsible for damages to the vehicle's body or tires.

Fabtech's obligation under this warranty is limited to the repair or replacement, at Fabtech option, of the defective product only. All costs of removal, installation or re-installation, freight charges, incidental or consequential damages are expressly excluded from this warranty. Fabtech is not responsible for damages and/or warranty of other vehicle parts related or non related to the installed Fabtech product. This warranty is expressly in lieu of all other warranties expressed or implied. This warranty shall not apply to any product that has been subject to accident, negligence, alteration, abuse or misuse as determined by Fabtech.

Fabtech suspension components must be installed as a complete system including shocks as shown in our current catalog. All warranties will become void if Fabtech parts are combined and/or substituted with other aftermarket suspension products. Combination and/or substitution of other aftermarket suspension parts may cause premature wear and/or product failure resulting in an accident causing injury or death. Fabtech does not warrant products not manufactured by Fabtech.

Installation of Fabtech product may void the vehicles factory warranty; it is the consumer's responsibility to check with their local vehicle's dealer for warranty disposition before the installation of the product.

It is the responsibility of the distributor and/or the retailer to review all warranties and warnings of Fabtech products with the consumer prior to purchase.

Fabtech reserves the right to supercede, discontinue, change the design, finish, part number and, or application of parts when deemed necessary without written notice. Fabtech is not responsible for misprints or typographical errors within the catalog or price sheet.