



**4331 EUCALYPTUS AVE. ~~ CHINO, CA 91710**

**909-597-7800 Fax 909-597-7185**

**FTS92006**

**Coil Shim Kit**

**2005 - 2007 Ford F250 & F350 4WD**

**PARTS LIST:**

Qua	Part #	Description
2	FT30218	Coil Shim
1	FT30239	Hardware Kit
1	FTLOCK	Lock Tight
2	FT92006i	Instruction Sheet

**HARDWARE LIST:**

Qua	Description
1	14mm-2.0 x 60mm
1	14mm-2.0 x 70mm

**TOOL LIST:**

- **Assorted Metric & Standard Wrenches**
- **Torque Wrench**
- **Floor Jack**
- **Jack Stands**

**WARNING**

**THIS KIT IS DESIGNED TO ONLY LEVEL THE TRUCK HEIGHT FROM LEFT TO RIGHT.**

**DO NOT USE AS A SOURCE OF ADDITIONAL LIFT.**

**DO NOT STACK MORE THAN TWO SHIMS PER SIDE.**

**THIS KIT WILL NOT WORK WITH THE FABTECH DUAL SHOCK SYSTEM**

**READ ALL INSTRUCTIONS THOROUGHLY FROM START TO FINISH BEFORE BEGINNING INSTALLATION.**

**CHECK ALL PARTS INCLUDED IN THIS KIT TO THE PARTS LIST ABOVE BEFORE BEGINNING INSTALLATION OF THIS KIT. IF ANY PARTS ARE MISSING, CONTACT FABTECH AT 909-597-7800.**

**DO NOT ALTER THE FINISH OF THESE COMPONENTS, EXAMPLE- CHROMING, ZINC PLATING OR PAINTING. CHANGING THE FINISH CAN CAUSE STRUCTURAL FATIGUE OF COMPONENTS.**

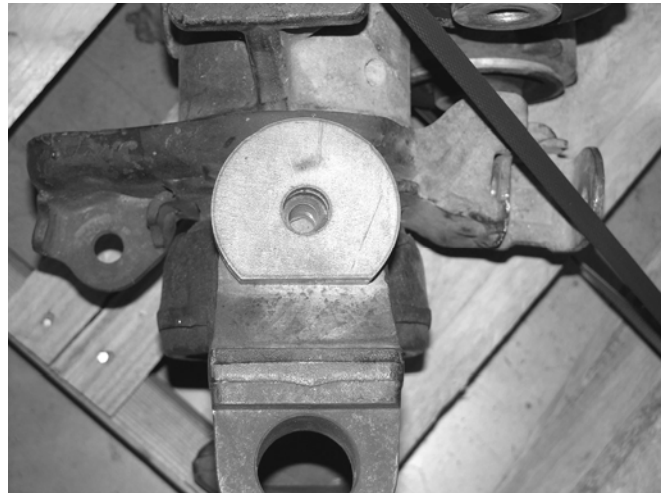
## **INSTALLATION INSTRUCTIONS:**

1. Disconnect the negative terminal on the battery. Park the truck on level ground. Take a measurement from both sides of the truck from the axle centerline to the bottom of the front fender lip. This will determine if one or two shims will be required to level the truck from side to side. Record the measurements below.

\_\_\_\_\_  
Driver Side

\_\_\_\_\_  
Passenger Side

2. Jack up the front end of the truck and support the frame, at the front frame rails, with jack stands. **NEVER WORK UNDER AN UNSUPPORTED VEHICLE.** Remove the front tires.
3. Working from the side of the truck that is lower, remove the brake caliper and tie it up out of the way. **DO NOT ALLOW THE CALIPER TO HANG FROM THE BRAKE LINES!** Remove the brake line and ABS line tabs from the front side and the rear side of the coil spring perch on the axle and save the hardware.
4. Supporting the front axle with a floor jack, disconnect the front shock and the sway bar end link from the axle. Save all hardware.
5. Lower the front axle allowing the coil spring to come free of tension. **EXERCISE EXTREME CAUTION WHEN WORKING WITH COIL SPRINGS UNDER LOAD!** Remove the coil spring and coil isolator from the truck and save. Remove the coil spring perch and save, discard the original bolt.
6. Locate the FT30218 Shim(s) and 14mm bolts. If you are installing one (1) shim, use the 60mm bolt and use the 70mm bolt if installing two (2) of the shims. Place the shim on the axle pad with the flat side facing toward the upper ball joint. Place the factory spring perch on the shim(s) and align it so that the perch is in its factory position. The perch has FRT stamped in it to locate it to the front of the axle. Torque to 100lbs. SEE PHOTOS BELOW AND IN NEXT COLUMN.



7. Using the coil spring that was previously removed, install the coil spring into the truck in the factory location using the original factory upper coil isolator.
8. Using the floor jack, raise the front axle enough to compress the front coil approx. 1" and re-connect the shock and sway bar end link. Replace the brake line and ABS line tabs on the front side and the rear side of the coil spring perch on the axle.

9. Reinstall the front tires and torque the wheel lugs to factory specifications, located in the owner's manual. Set the truck back on the ground. **WHILE TURNING THE STEERING WHEEL FULLY IN EACH DIRECTION, MAKE SURE THERE IS AMPLE CLEARANCE BETWEEN THE WHEELS, TIRES, CONTROL ARMS, BRAKE LINES AND ABS**

**WIRES.** Check the front toe in and reset it to factory specifications.

**RETORQUE ALL NUTS, BOLTS AND LUGS AFTER 50 MILES AND PERIODICALLY THEREAFTER.**

For technical assistance call: 909-597-7800

**Product Warranty and Warnings-**

Fabtech provides a Limited Lifetime Warranty to the original retail purchaser who owns the vehicle, on which the product was originally installed, for defects in workmanship and materials.

The Limited Lifetime Warranty excludes the following Fabtech items; bushings, bump stops, ball joints, tie rod ends, limiting straps, cross shafts, heim joints. These parts are subject to wear and are not considered defective when worn. They are warranted for 60 days from the date of purchase for defects in workmanship.

Take apart shocks are considered a serviceable shock with a one year warranty on leakage only. Service seal kits are available separately for future maintenance. All other shocks are covered under our Limited Lifetime Warranty.

Fabtech does not warrant any product for finish, alterations, modifications and/or installation contrary to Fabtech's instructions. Alterations to the finish of the parts including but not limited to painting, powdercoating, plating and/or welding will void all warranties. Some finish damage may occur to parts during shipping which is considered normal and is not covered under warranty.

Fabtech products are not designed nor intended to be installed on vehicles used in race applications or for racing purposes or for similar activities. (A "RACE" is defined as any contest between two or more vehicles, or any contest of one or more vehicle against the clock, whether or not such contest is for a prize). This warranty does not include coverage for police or taxi vehicles, race vehicles, or vehicles used for government or commercial purposes. Also excluded from this warranty are sales outside of the United States of America.

Installation of most suspension products will raise the center of gravity of the vehicle and will cause the vehicle to handle differently than stock. It may increase the vehicle's susceptibility to a rollover, on road and off road, at all speeds. Extreme care should be taken to operate the vehicle safely at all times to prevent rollover or loss of control resulting in serious injury or death. Fabtech front end Desert Guards may impair the deployment or operation of vehicles equipped with supplemental restraining systems/air bag systems and should not be installed if the vehicle is equipped as so.

Fabtech makes every effort to ensure suspension product compatibility with all vehicles listed in the catalog, but due to unknown auto manufacturers production changes and/or inconsistencies by the auto manufacturer, Fabtech cannot be responsible for 100% compatibility, including the fitment of tire and wheel sizes listed. The Tire and Wheel sizes listed in Fabtech's catalog are only a guideline for street driving with noted fender trimming. Fabtech is not responsible for damages to the vehicle's body or tires.

Fabtech's obligation under this warranty is limited to the repair or replacement, at Fabtech option, of the defective product only. All costs of removal, installation or re-installation, freight charges, incidental or consequential damages are expressly excluded from this warranty. Fabtech is not responsible for damages and/or warranty of other vehicle parts related or non related to the installed Fabtech product. This warranty is expressly in lieu of all other warranties expressed or implied. This warranty shall not apply to any product that has been subject to accident, negligence, alteration, abuse or misuse as determined by Fabtech.

Fabtech suspension components must be installed as a complete system including shocks as shown in our current catalog. All warranties will become void if Fabtech parts are combined and/or substituted with other aftermarket suspension products. Combination and/or substitution of other aftermarket suspension parts may cause premature wear and/or product failure resulting in an accident causing injury or death. Fabtech does not warrant products not manufactured by Fabtech.

Installation of Fabtech product may void the vehicles factory warranty; it is the consumer's responsibility to check with their local vehicle's dealer for warranty disposition before the installation of the product.

It is the responsibility of the distributor and/or the retailer to review all warranties and warnings of Fabtech products with the consumer prior to purchase.

Fabtech reserves the right to supercede, discontinue, change the design, finish, part number and, or application of parts when deemed necessary without written notice. Fabtech is not responsible for misprints or typographical errors within the catalog or price sheet.