



www.fabtechmotorsports.com

**4331 EUCALYPTUS AVE. CHINO, CA. 91710
PHONE 909-597-7800 FAX 909-597-7185**

**Transmission Drop Bracket
FTS93007
2006 - 2010 Dodge Ram 2500 4wd
Gas Engine w/ automatic transmission**

Parts List

Qu a	Part #	Description
1	FT44116	Transmission Bracket
1	FTS419	Carrier Drop Kit
1	FT93007i	Instruction Sheet

Tool List: (Not Included)

- Jack w/ Jack stands
- Assorted S.A.E Sockets & Combination Wrenches
- Transmission Jack
- Torque Wrench

THIS DROP BRACKET WILL ONLY WORK WITH TRUCKS EQUIPPED THE GAS ENGINE AND AUTOMATIC TRANSMISSION.

THIS BRACKET IS DESIGNED FOR USE ONLY WITH A FABTECH 4.5" or 6" SUSPENSION SYSTEM

READ ALL INSTRUCTIONS THOROUGHLY FROM START TO FINISH BEFORE BEGINNING INSTALLATION!

CHECK ALL PARTS INCLUDED IN THIS KIT TO THE PARTS LIST ABOVE BEFORE BEGINNING INSTALLATION OF THIS KIT. IF ANY PIECES ARE MISSING, CONTACT FABTECH AT 909-597-7800.

INSTRUCTIONS:

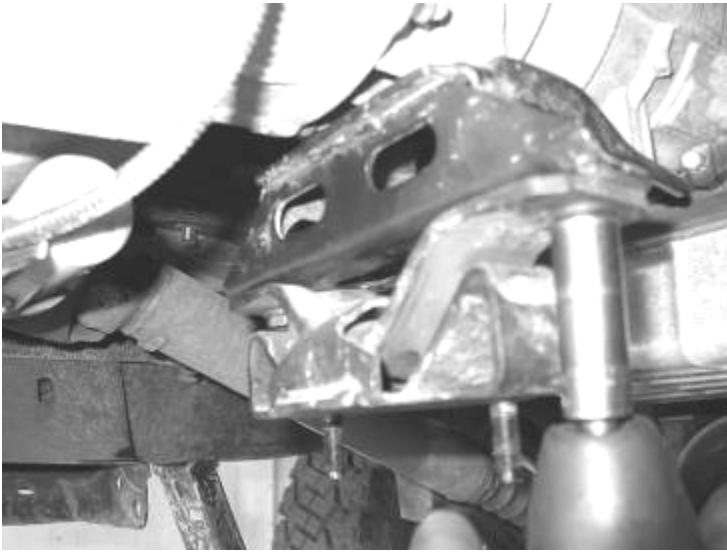
1. Disconnect the negative terminal on the battery. With the vehicle on level ground, set the emergency brake and block the rear tires. Jack up the front end of the truck and support the frame rails with jack stands just behind the front bumper. **NEVER WORK UNDER AN UN-SUPPORTED VEHICLE.**
2. Support the transfer case and transmission with a transmission or floor jack. Remove the transfer case skid plate (if equipped) and save with the hardware. SEE PHOTOS BELOW



3. Remove the two transmission mount nuts from the crossmember. Carefully raise the transmission and remove the four crossmember bolts from the frame saving the crossmember and the hardware. SEE PHOTOS IN NEXT COLUMN



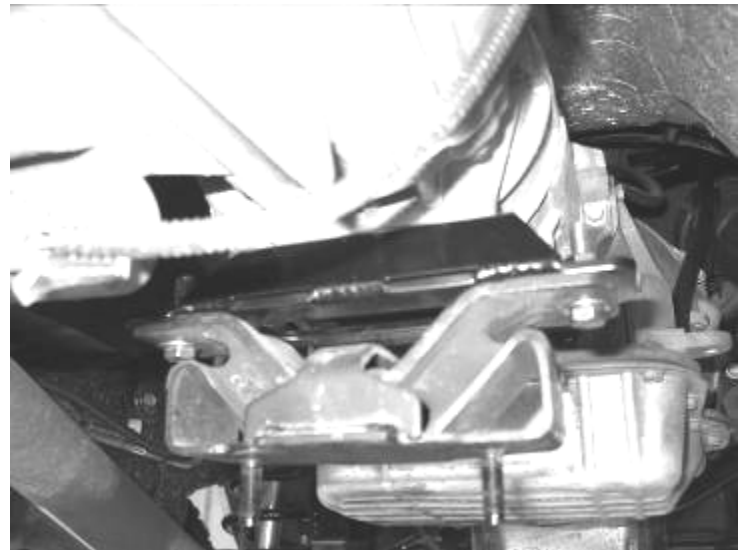
4. Remove the two bolts that hold the factory trans bracket to the trans mount. Remove the four bolts that secure the trans mount to the transmission. Raise the jack just enough so that the stock mount can be removed. SEE PHOTO ON NEXT PAGE



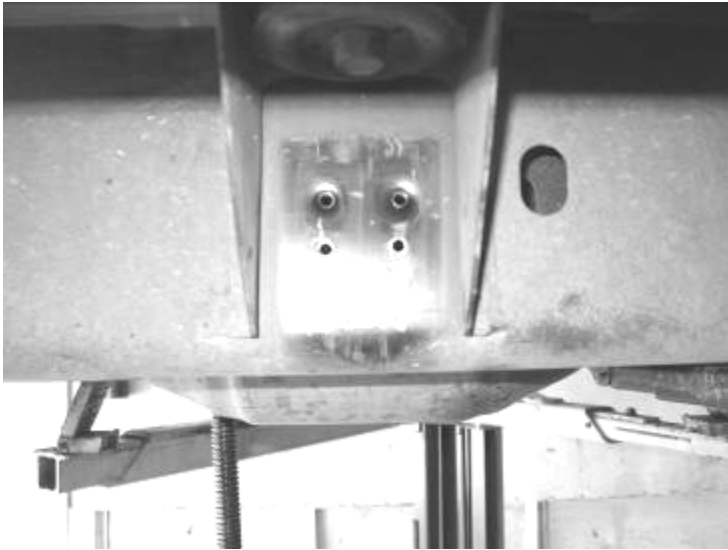
5. Loosen the two exhaust clamps (1 in front of & 1 behind the catalytic converter). And spray the coupling with penetrating oil (WD-40). This will allow the transmission to lower easier. SEE PHOTO IN NEXT COLUMN



6. Locate FT44116 Drop Transmission Bracket and factory hardware. Install the new mount onto the trans and then the mount onto the trans bracket. Re-install the crossmember. Lower the transmission and re-install the factory flange nuts securing the trans mount to the crossmember Tighten all of the nuts and bolts. Lower the jack that was used to support the transmission and torque all of the hardware to 95 ft. lbs. Re-tighten the exhaust clamps. SEE PHOTOS BELOW.



7. If your vehicle has the transfer case skid plate, you will need to lower the four rear mounting holes to provide clearance for the catalytic converter. Mark the four new hole locations 1" below factory holes and drill to 1/4". Re-install skid plate using self-tapping bolts provided with this kit. SEE PHOTO ON NEXT PAGE



8. Locate the supplied FTS419 kit. Remove the two bolts securing the drive shaft carrier bearing to the frame cross member. **SUPPORT THE DRIVE SHAFT WITH ROPE OR A STRAP, DO NOT LET IT HANG WITH SUPPORT.**
9. Determine the amount of shims necessary for the amount of suspension lift installed. For a 4.5" lift, you will start with 1/2 of the shims and for the 6" lift, use all the supplied shims and the 10mm x 75mm bolts.
10. Place the shims in between the carrier bearing and frame. Place a lock washer, followed by a flat washer on each bolt and insert them through the carrier bearing and shims, into the frame inserts. Fully torque all hardware to 30 ft/lbs.
11. After driving the vehicle, small adjustments can be made by adding or removing shims until the vibration is reduced or eliminated. Because of the added leverage induced by larger tires and lift systems, all driveline vibrations may not be completely eliminated.

RETORQUE ALL NUTS, BOLTS AND LUGS AFTER 50 MILES AND PERIODICALLY THEREAFTER
For technical assistance call: 909-597-7800

Product Warranty and Warnings-

Fabtech provides a Limited Lifetime Warranty to the original retail purchaser who owns the vehicle, on which the product was originally installed, for defects in workmanship and materials.

The Limited Lifetime Warranty excludes the following Fabtech items; bushings, bump stops, ball joints, tie rod ends, limiting straps, cross shafts, heim joints. These parts are subject to wear and are not considered defective when worn. They are warranted for 60 days from the date of purchase for defects in workmanship.

Take apart shocks are considered a serviceable shock with a one year warranty on leakage only. Service seal kits are available separately for future maintenance. All other shocks are covered under our Limited Lifetime Warranty.

Fabtech does not warrant any product for finish, alterations, modifications and/or installation contrary to Fabtech's instructions. Alterations to the finish of the parts including but not limited to painting, powdercoating, plating and/or welding will void all warranties. Some finish damage may occur to parts during shipping which is considered normal and is not covered under warranty.

Fabtech products are not designed nor intended to be installed on vehicles used in race applications or for racing purposes or for similar activities. (A "RACE" is defined as any contest between two or more vehicles, or any contest of one or more vehicle against the clock, whether or not such contest is for a prize). This warranty does not include coverage for police or taxi vehicles, race vehicles, or vehicles used for government or commercial purposes. Also excluded from this warranty are sales outside of the United States of America.

Installation of most suspension products will raise the center of gravity of the vehicle and will cause the vehicle to handle differently than stock. It may increase the vehicle's susceptibility to a rollover, on road and off road, at all speeds. Extreme care should be taken to operate the vehicle safely at all times to prevent rollover or loss of control resulting in serious injury or death. Fabtech front end Desert Guards may impair the deployment or operation of vehicles equipped with supplemental restraining systems/air bag systems and should not be installed if the vehicle is equipped as so.

Fabtech makes every effort to ensure suspension product compatibility with all vehicles listed in the catalog, but due to unknown auto manufacturers production changes and/or inconsistencies by the auto manufacturer, Fabtech cannot be responsible for 100% compatibility, including the fitment of tire and wheel sizes listed. The Tire and Wheel sizes listed in Fabtech's catalog are only a guideline for street driving with noted fender trimming. Fabtech is not responsible for damages to the vehicle's body or tires.

Fabtech's obligation under this warranty is limited to the repair or replacement, at Fabtech option, of the defective product only. All costs of removal, installation or re-installation, freight charges, incidental or consequential damages are expressly excluded from this warranty. Fabtech is not responsible for damages and/or warranty of other vehicle parts related or non related to the installed Fabtech product. This warranty is expressly in lieu of all other warranties expressed or implied. This warranty shall not apply to any product that has been subject to accident, negligence, alteration, abuse or misuse as determined by Fabtech.

Fabtech suspension components must be installed as a complete system including shocks as shown in our current catalog. All warranties will become void if Fabtech parts are combined and/or substituted with other aftermarket suspension products. Combination and/or substitution of other aftermarket suspension parts may cause premature wear and/or product failure resulting in an accident causing injury or death. Fabtech does not warrant products not manufactured by Fabtech.

Installation of Fabtech product may void the vehicles factory warranty; it is the consumer's responsibility to check with their local vehicle's dealer for warranty disposition before the installation of the product.

It is the responsibility of the distributor and/or the retailer to review all warranties and warnings of Fabtech products with the consumer prior to purchase.

Fabtech reserves the right to supercede, discontinue, change the design, finish, part number and, or application of parts when deemed necessary without written notice. Fabtech is not responsible for misprints or typographical errors within the catalog or price sheet.