



**4331 EUCALYPTUS AVE. ~~ CHINO, CA 91710
909-597-7800 Fax 909-597-7185**

**1997-2006 JEEP T.J. 4" LIFT FRT. SWAY LINK KIT 4 WHEEL DRIVE
FTS94011BK & FTS94011**

PARTS LIST:

2	FT50013	Frt Sway Bar Bracket Upper
1	FT50036	Frt Sway Bar Brk. Lower Drv.
1	FT50066	Frt Sway Bar Brk. Lower Pass
1	FT50068BK	4" Frt Sway Bar Link Drv
1	FT50069BK	4" Frt Sway Bar Link Pass
2	FT50067	Sway Bar link Frame Bracket
2	FT42	Sway Bar Pin
2	FT90036	Lynch Pin
2	FT50096	Bolt Tab Sway Bar
2	FT45	Sway Bar Key Ring 1 1/2"

HARDWARE LIST:

2	3/8"-16 Nylok Nut
2	3/8" SAE Flat Washer
2	1/2"-13 x 3 1/2" Bolt
2	1/2"-13 x 1 1/2" Bolt
4	1/2"-13 Nylok Nut
8	1/2" SAE Flat Washer
2	5/16" x 1" Self Tapping Screw
1	Bushing Kit – FT50048
1	Sleeve Kit - FT50089

TOOL LIST:

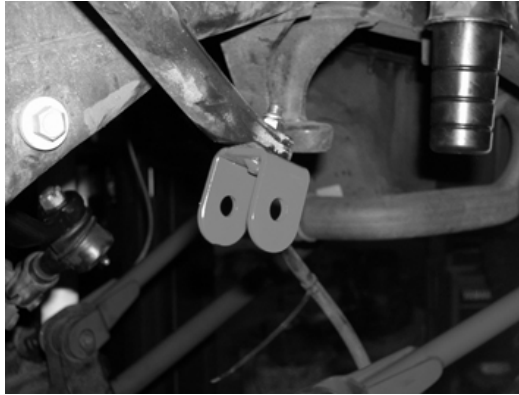
ASSORTED METRIC AND S. A. E. WRENCHES AND SOCKETS

**CHECK ALL PARTS INCLUDED IN THIS KIT TO THE PARTS LIST ABOVE BEFORE
BEGINNING INSTALLATION OF THE KIT. IF ANY PIECES ARE MISSING, CONTACT
FABTECH AT 909-597-7800**

READ ALL INSTRUCTIONS THOROUGHLY FROM START TO FINISH BEFORE BEGINNING INSTALLATION.

INSTRUCTIONS:

1. Disconnect the negative terminal on the battery. Remove the original sway bar end links from both sides of the front sway bar and discard.
2. Working from the driver side of the truck, locate the new Fabtech upper sway bar end link bracket FT50013. Attach to the factory sway bar with the included 3/8" nylok nut and washer. SEE PHOTO BELOW.



3. Locate the new Fabtech lower sway bar end link bracket FT50036 (driver). Attach to the factory axel mount with the supplied 1/2" x 1 1/2" bolt, nut, and washer. Note: there is a driver and passenger side bracket, when installing the bracket make sure the key way on the bracket is locked into the factory mount and the new bracket is straight up and down. SEE PHOTO BELOW.



4. Locate the new Fabtech sway bar end link FT50068 (driver). Install one hour glass bushing and one 1/2" sleeve into each end of the new Fabtech sway bar end link with the supplied 1/2" x 3-1/2" nut, bolt, and washers connect the Fabtech sway bar link to the new upper sway bar mount. **Note: when installing the sway bar end links, make sure the tab on the end link is facing back on the upper inboard side.** SEE DRAWING BELOW.



Driver Side End Link
FT50069

Passenger Side End Link
FT50068

5. Locate the new Fabtech quick disconnect frame bracket FT50067. With the supplied new Fabtech quick disconnect pin FT42, connect to the quick disconnect bracket, as shown below. Once connected, swing sway bar end link with bracket forward until the bracket comes in contact with the frame. Mark the spot on the frame with a center punch and drill a guide hole. Locate the supplied FT50096 bolt tab and insert it into the frame from the bottom side. Use the supplied 5/16" nylock nut and washer and attach the bracket to the frame. SEE PHOTOS BELOW.



6. Repeat steps two through five on the passenger side of the truck.
7. With both driver side and passenger side assembled connect the sway bar links to the lower mounts with the supplied sway bar disconnect pins and lynch pins. SEE PHOTO BELOW.



8. Recheck all nut and bolts for proper torque tightness before driving.

RETORQUE ALL NUTS, BOLTS AND LUGS AFTER 50 MILES AND PERIODICALLY THEREAFTER.

For technical assistance call: 909-597-7800

Product Warranty and Warnings-

Fabtech provides a Limited Lifetime Warranty to the original retail purchaser who owns the vehicle, on which the product was originally installed, for defects in workmanship and materials.

The Limited Lifetime Warranty excludes the following Fabtech items; bushings, bump stops, ball joints, tie rod ends, limiting straps, cross shafts, heim joints. These parts are subject to wear and are not considered defective when worn. They are warranted for 60 days from the date of purchase for defects in workmanship.

Take apart shocks are considered a serviceable shock with a one year warranty on leakage only. Service seal kits are available separately for future maintenance. All other shocks are covered under our Limited Lifetime Warranty.

Fabtech does not warrant any product for finish, alterations, modifications and/or installation contrary to Fabtech's instructions. Alterations to the finish of the parts including but not limited to painting, powdercoating, plating and/or welding will void all warranties. Some finish damage may occur to parts during shipping which is considered normal and is not covered under warranty.

Fabtech products are not designed nor intended to be installed on vehicles used in race applications or for racing purposes or for similar activities. (A "RACE" is defined as any contest between two or more vehicles, or any contest of one or more vehicle against the clock, whether or not such contest is for a prize). This warranty does not include coverage for police or taxi vehicles, race vehicles, or vehicles used for government or commercial purposes. Also excluded from this warranty are sales outside of the United States of America.

Installation of most suspension products will raise the center of gravity of the vehicle and will cause the vehicle to handle differently than stock. It may increase the vehicle's susceptibility to a rollover, on road and off road, at all speeds. Extreme care should be taken to operate the vehicle safely at all times to prevent rollover or loss of control resulting in serious injury or death. Fabtech front end Desert Guards may impair the deployment or operation of vehicles equipped with supplemental restraining systems/air bag systems and should not be installed if the vehicle is equipped as so.

Fabtech makes every effort to ensure suspension product compatibility with all vehicles listed in the catalog, but due to unknown auto manufacturers production changes and/or inconsistencies by the auto manufacturer, Fabtech cannot be responsible for 100% compatibility, including the fitment of tire and wheel sizes listed. The Tire and Wheel sizes listed in Fabtech's catalog are only a guideline for street driving with noted fender trimming. Fabtech is not responsible for damages to the vehicle's body or tires.

Fabtech's obligation under this warranty is limited to the repair or replacement, at Fabtech option, of the defective product only. All costs of removal, installation or re-installation, freight charges, incidental or consequential damages are expressly excluded from this warranty. Fabtech is not responsible for damages and/or warranty of other vehicle parts related or non related to the installed Fabtech product. This warranty is expressly in lieu of all other warranties expressed or implied. This warranty shall not apply to any product that has been subject to accident, negligence, alteration, abuse or misuse as determined by Fabtech.

Fabtech suspension components must be installed as a complete system including shocks as shown in our current catalog. All warranties will become void if Fabtech parts are combined and/or substituted with other aftermarket suspension products. Combination and/or substitution of other aftermarket suspension parts may cause premature wear and/or product failure resulting in an accident causing injury or death. Fabtech does not warrant products not manufactured by Fabtech.

Installation of Fabtech product may void the vehicles factory warranty; it is the consumer's responsibility to check with their local vehicle's dealer for warranty disposition before the installation of the product.

It is the responsibility of the distributor and/or the retailer to review all warranties and warnings of Fabtech products with the consumer prior to purchase.

Fabtech reserves the right to supercede, discontinue, change the design, finish, part number and, or application of parts when deemed necessary without written notice. Fabtech is not responsible for misprints or typographical errors within the catalog or price sheet.