



www.fabtechmotorsports.com

**4331 EUCALYPTUS AVE. CHINO, CA. 91710
PHONE 909-597-7800 FAX 909-597-7185**

FTS94037 9" Ford Rear Axle Truss

Parts List

Qu a	Part #	Description
1	FT50172	Center Bracket
1	FT50265	Axle Truss Dr. Gusset
1	FT50266	Axle Truss Pass.Gusset
2	FT94037i	Instruction Sheet

Tool List: (Not Included)

- Mig Welder
- Die Grinder w/ Cut-Off Wheel & Sanding Disc

**THIS TRUSS IS A WELD-ON INSTALLATION.
ONLY AN EXPERIENCED CERTIFIED WELDER
SHOULD COMPLETE THIS INSTALLATION.**

**DUE TO VARIANCES FROM ONE AXLE HOUSING TO ANOTHER,
YOU WILL NEED TO SAND / GRIND DOWN THE SIDE GUSSETS IN THIS KIT FOR PROPER FITMENT OF
THE GUSSETS TO THE AXLE HOUSING**

**FABTECH ONLY OFFERS THE AXLE TRUSS MOUNT FOR THIS AXLE, ALL OTHER MOUNTS, I.E. SWAY
BAR, LINK ARM MOUNTS, SHOCK MOUNTS, BRAKE LINES, BRAKE LINE MOUNTS, SPRING SEATS
ETC... WILL NEED TO BE FABRICATED BY AN EXPERIENCED FABRICATOR.**

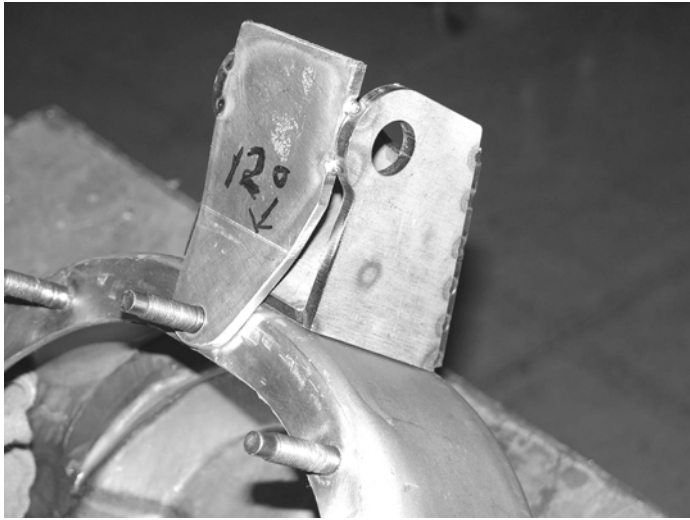
**THIS AXLE TRUSS IS DESIGNED TO ONLY WORK WITH THE FABTECH 3 LINK CRAWLER SYSTEM
WITH A 9" FORD REAR AXLE.**

**READ ALL INSTRUCTIONS THOROUGHLY FROM START TO FINISH BEFORE BEGINNING
INSTALLATION!**

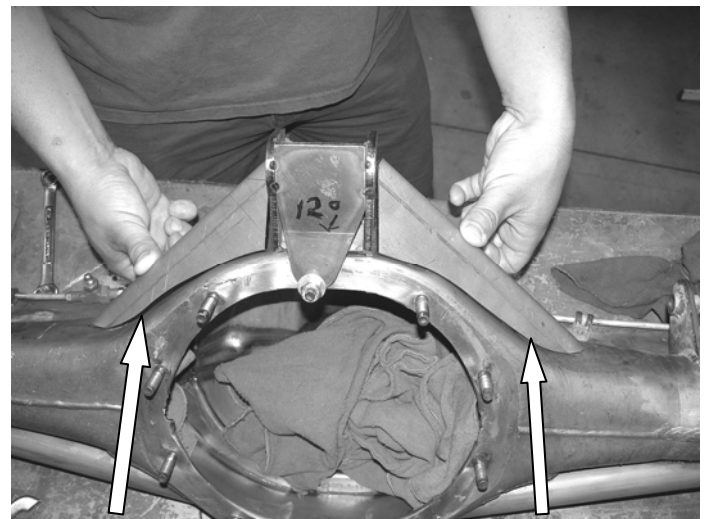
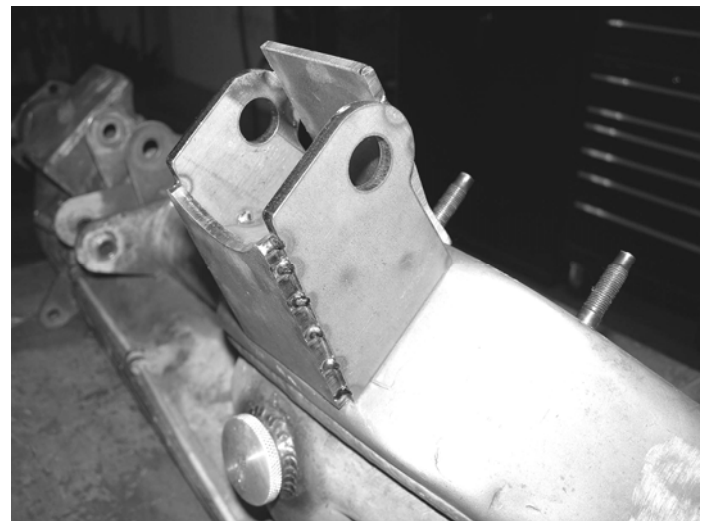
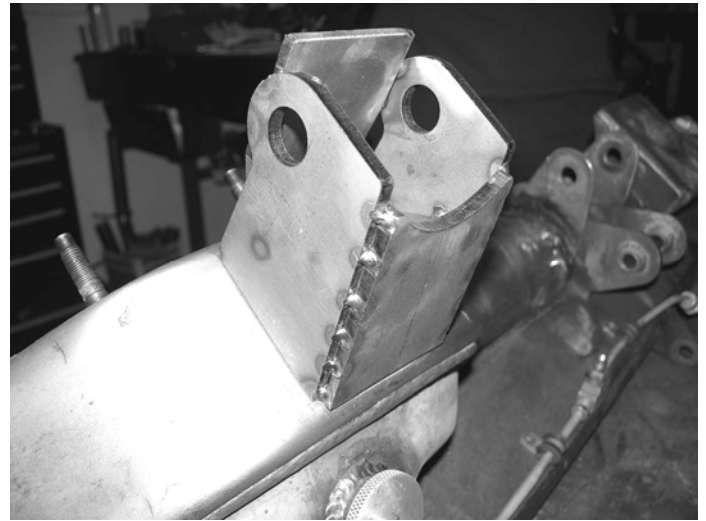
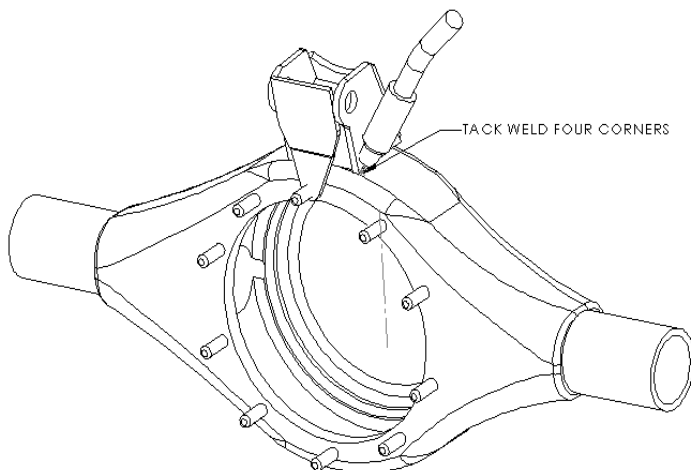
**CHECK ALL PARTS INCLUDED IN THIS KIT TO THE PARTS LIST ABOVE BEFORE BEGINNING
INSTALLATION OF THIS KIT. IF ANY PIECES ARE MISSING,
CONTACT FABTECH AT 909-597-7800.**

INSTRUCTIONS:

1. Disconnect the negative terminal on the battery. With the rear axle housing supported on a bench or jack stands (**housing only, third member and axles already removed**) remove all paint and / or grease from the top of the axle.
2. Locate FT50172 axle truss center bracket. Place the bracket onto the top of the housing and on the top mounting stud in the axle. SEE PHOTO BELOW



3. With the bracket centered on the top of the axle, place tack welds on the bracket at the four corners (tack weld **only** at this time). Locate FT20265 (drv. side) and FT50266 (pass side) gussets. Place the gussets onto the axle and check the fitment of these gussets to the center bracket and the axle housing (**due to variances from one axle housing to another, you will need to sand the side gussets for proper fitment of the gusset to the axle housing**). The gussets will need to fit flush to the housing and the center bracket prior to welding them together. SEE PHOTOS BELOW.

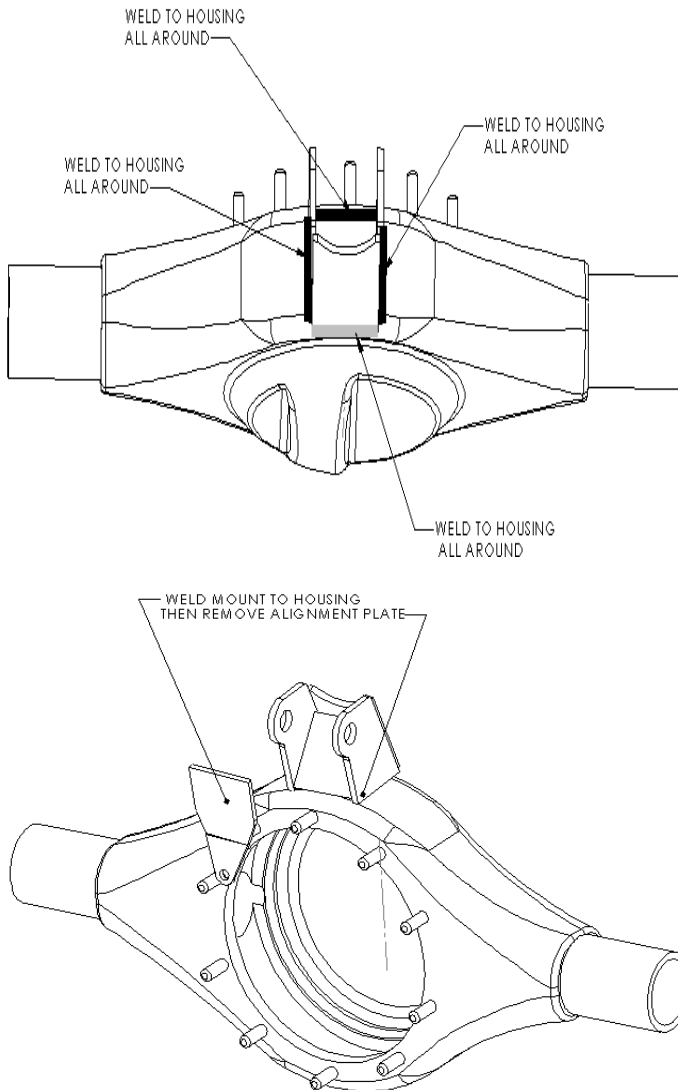


FT50266 Pass. Side

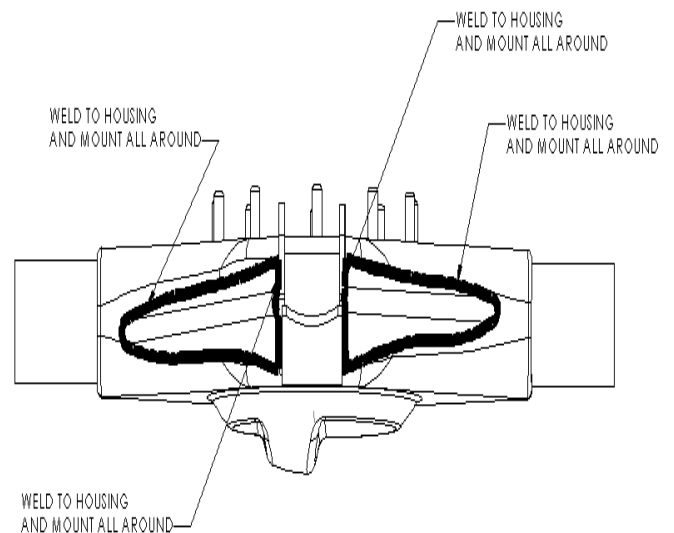
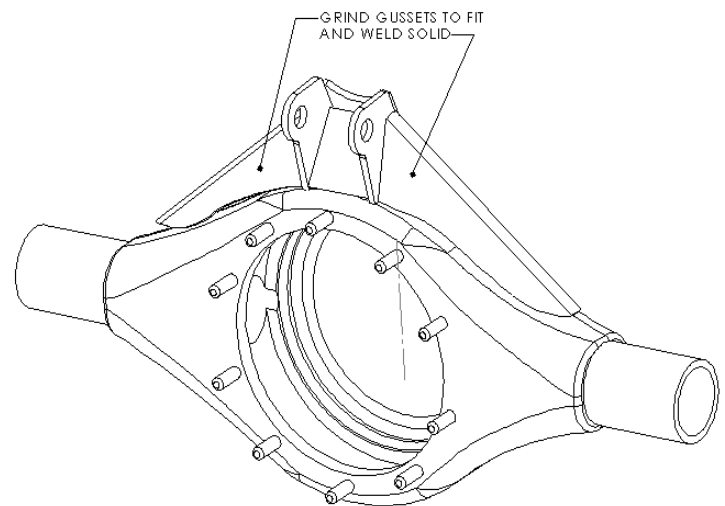
FT50265 Driver Side

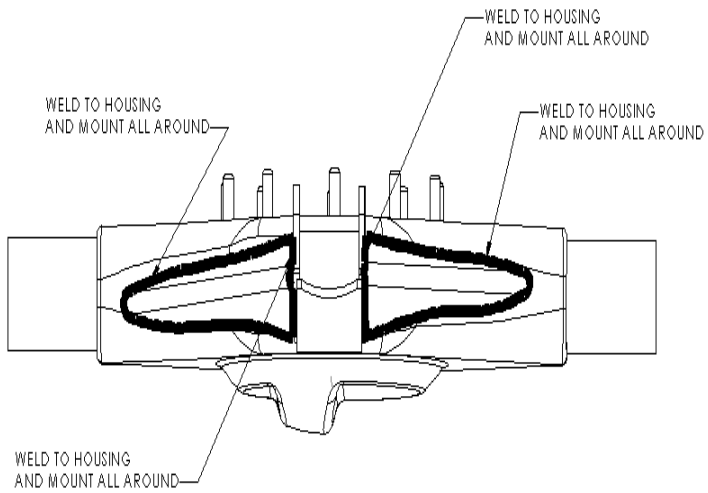
4. Remove the side gussets and weld the center bracket to the axle housing. Weld the center bracket on all

three sides at the axle housing. Using a die grinder with a cut-off wheel, cut the tack welds holding the locating plate to the center bracket and discard (**use care not to damage main bracket**). Weld the front of the bracket to the housing. SEE DIAGRAM BELOW.

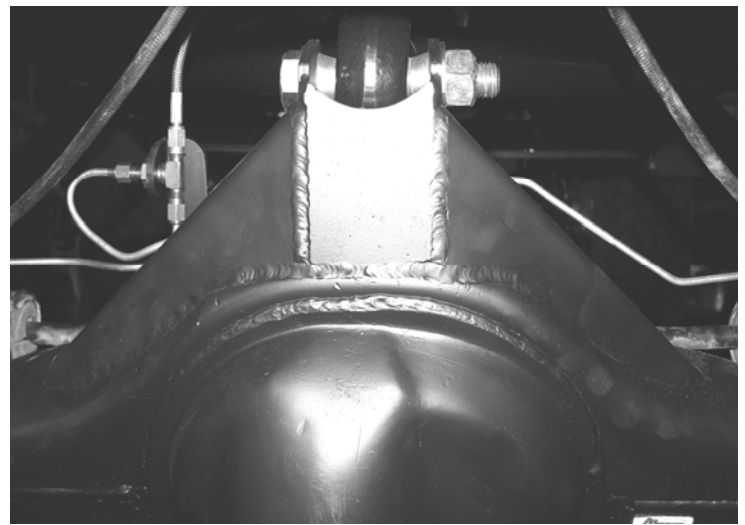
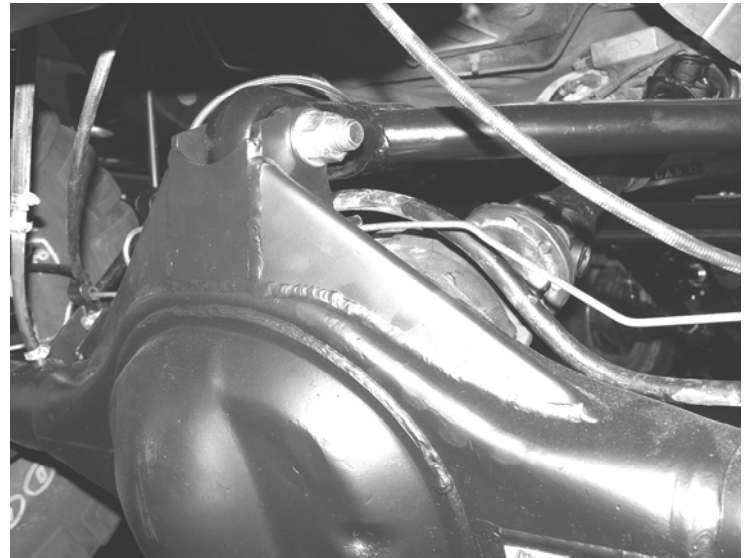
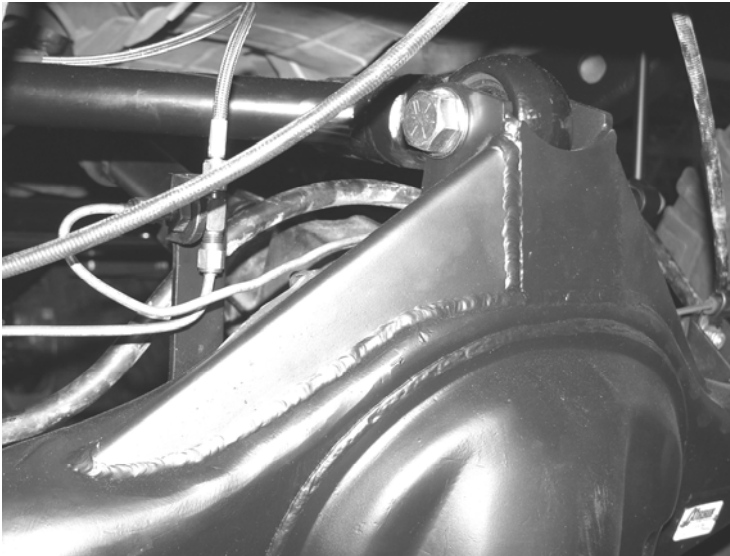


5. Place the side gussets on the correct sides and re-check the fitment prior to welding them to the housing (the gussets need to be in the center of the housing). Weld the gussets to the bracket and axle housing. SEE PHOTO BELOW.





6. After the axle truss and axle housing has cooled, paint and re-assemble the differential.



7. Continue with the instructions that are included with the Crawler system.

RETORQUE ALL NUTS, BOLTS AND LUGS AFTER 50 MILES AND PERIODICALLY THEREAFTER.

For technical assistance call: 909-597-7800

Product Warranty and Warnings-

Fabtech provides a Limited Lifetime Warranty to the original retail purchaser who owns the vehicle, on which the product was originally installed, for defects in workmanship and materials.

The Limited Lifetime Warranty excludes the following Fabtech items; bushings, bump stops, ball joints, tie rod ends, limiting straps, cross shafts, heim joints. These parts are subject to wear and are not considered defective when worn. They are warranted for 60 days from the date of purchase for defects in workmanship.

Take apart shocks are considered a serviceable shock with a one year warranty on leakage only. Service seal kits are available separately for future maintenance. All other shocks are covered under our Limited Lifetime Warranty.

Fabtech does not warrant any product for finish, alterations, modifications and/or installation contrary to Fabtech's instructions. Alterations to the finish of the parts including but not limited to painting, powdercoating, plating and/or welding will void all warranties. Some finish damage may occur to parts during shipping which is considered normal and is not covered under warranty.

Fabtech products are not designed nor intended to be installed on vehicles used in race applications or for racing purposes or for similar activities. (A "RACE" is defined as any contest between two or more vehicles, or any contest of one or more vehicle against the clock, whether or not such contest is for a prize). This warranty does not include coverage for police or taxi vehicles, race vehicles, or vehicles used for government or commercial purposes. Also excluded from this warranty are sales outside of the United States of America.

Installation of most suspension products will raise the center of gravity of the vehicle and will cause the vehicle to handle differently than stock. It may increase the vehicle's susceptibility to a rollover, on road and off road, at all speeds. Extreme care should be taken to operate the vehicle safely at all times to prevent rollover or loss of control resulting in serious injury or death. Fabtech front end Desert Guards may impair the deployment or operation of vehicles equipped with supplemental restraining systems/air bag systems and should not be installed if the vehicle is equipped as so.

Fabtech makes every effort to ensure suspension product compatibility with all vehicles listed in the catalog, but due to unknown auto manufacturers production changes and/or inconsistencies by the auto manufacturer, Fabtech cannot be responsible for 100% compatibility, including the fitment of tire and wheel sizes listed. The Tire and Wheel sizes listed in Fabtech's catalog are only a guideline for street driving with noted fender trimming. Fabtech is not responsible for damages to the vehicle's body or tires.

Fabtech's obligation under this warranty is limited to the repair or replacement, at Fabtech option, of the defective product only. All costs of removal, installation or re-installation, freight charges, incidental or consequential damages are expressly excluded from this warranty. Fabtech is not responsible for damages and/or warranty of other vehicle parts related or non related to the installed Fabtech product. This warranty is expressly in lieu of all other warranties expressed or implied. This warranty shall not apply to any product that has been subject to accident, negligence, alteration, abuse or misuse as determined by Fabtech.

Fabtech suspension components must be installed as a complete system including shocks as shown in our current catalog. All warranties will become void if Fabtech parts are combined and/or substituted with other aftermarket suspension products. Combination and/or substitution of other aftermarket suspension parts may cause premature wear and/or product failure resulting in an accident causing injury or death. Fabtech does not warrant products not manufactured by Fabtech.

Installation of Fabtech product may void the vehicles factory warranty; it is the consumer's responsibility to check with their local vehicle's dealer for warranty disposition before the installation of the product.

It is the responsibility of the distributor and/or the retailer to review all warranties and warnings of Fabtech products with the consumer prior to purchase.

Fabtech reserves the right to supercede, discontinue, change the design, finish, part number and, or application of parts when deemed necessary without written notice. Fabtech is not responsible for misprints or typographical errors within the catalog or price sheet.