



www.fabtechmotorsports.com

4331 EUCALYPTUS AVE. CHINO, CA. 91710
PHONE 909-597-7800 FAX 909-597-7185

FTS94041
Traction Bar System
1987 – 1995 Jeep Wrangler

PARTS LIST:

Qta	Part #	Description
1	FT50254BK	Traction Bar
1	FT50255	Axle Mount weld on
1	FT50258BK	Crossmember
1	FT50256BK	Crossmember Bracket Driver
1	FT50257BK	Crossmember Bracket Pass.
1	FT50259BK	Shackle
2	FTS43	Mis-Alignment
1	FT50268	E-Brake Cable Guide
1	FT95243	Heim 3/4"
2	FTS98002	Solid Heim 3/4"
1	FT50274	Bushing Kit
1	FT50273	Hardware Kit
2	FT94041i	Instruction Sheet

HARDWARE LIST:

Qta	Description	Location
4	7/16"-14 X 3 3/4" Hex Bolt	Traction Bar Frame Brk.
4	7/16"-14 C-Locks	
8	7/16" SAE Flat Washer	
2	1/2"-13 X 4 1/4" Hex Bolt	Traction Bar Cross bar
2	1/2"-13 C-Locks	
4	1/2" SAE Flat Washer	
1	1/2"-13 X 4 1/2" Hex Bolt	Traction Bar @ Pivot
1	1/2"-13 C-Locks	
2	1/2" SAE Flat Washer	
1	1/2"-13 X 3" Hex Bolt	Upper Heim
1	1/2"-13 C-Locks	
2	1/2" SAE Flat Washer	
3	3/4"-16 Jam Nuts	Traction Bar
2	3/4"-10 X 2 1/2" Hex Bolt	
2	3/4"-10 C-Lock	
4	3/4" SAE Flat Washer	
1	5/16" x 1" Self Threading Bolt	E-Brake Cable Bracket

Tool List: (Not Included)

- Assorted Metric and S.A.E Sockets & Box Wrenches
- Drill w/ Assorted Drill Bits
- Mig Welder
- Paint Pen or Center Punch

INSTALLATION OF THIS KIT REQUIRES THE REMOVAL OF THE FACTORY REAR TRAC BAR FROM THE JEEP

THIS SYSTEM CAN ONLY BE USED WITH A SPRING OVER AXLE KIT

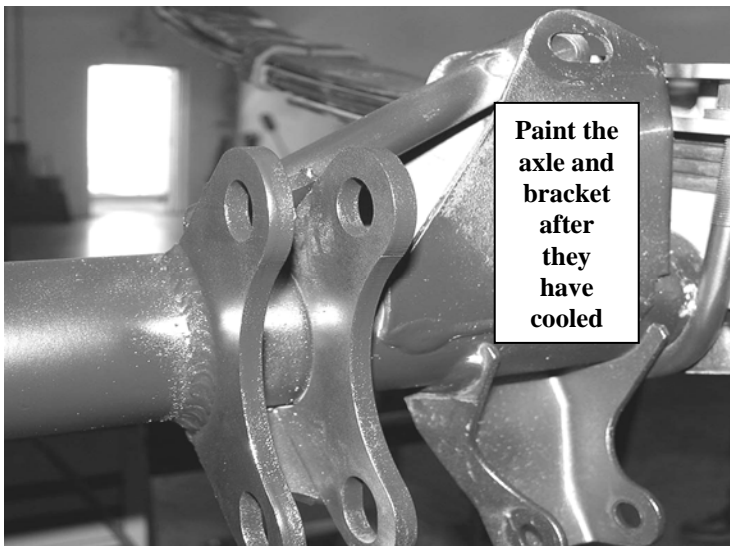
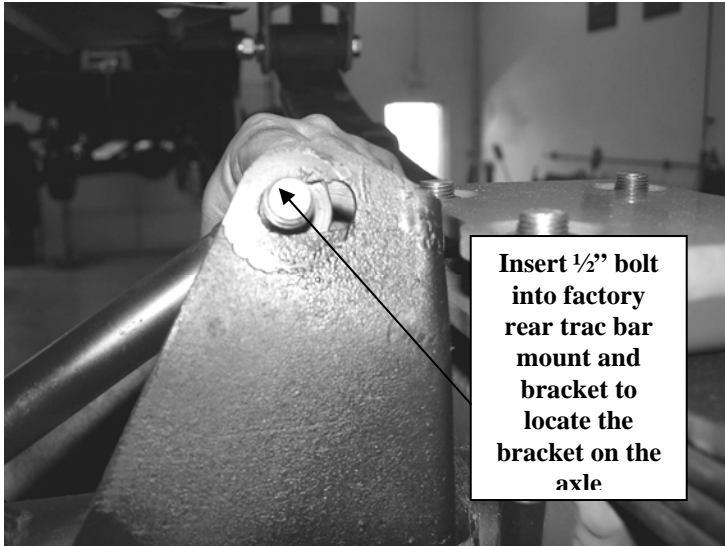
READ ALL INSTRUCTIONS THOROUGHLY FROM START TO FINISH BEFORE BEGINNING INSTALLATION!

CHECK ALL PARTS INCLUDED IN THIS KIT TO THE PARTS LIST ABOVE BEFORE BEGINNING INSTALLATION OF THIS KIT. IF ANY PIECES ARE MISSING, CONTACT FABTECH AT 909-597-7800.

INSTRUCTIONS:

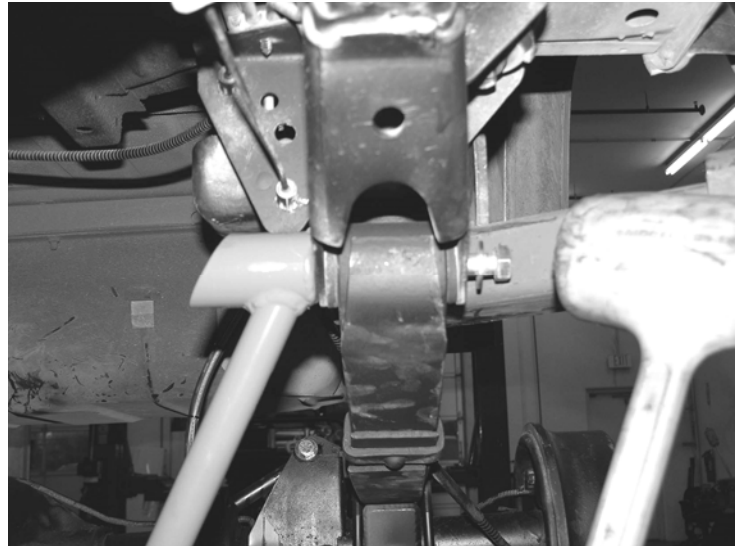
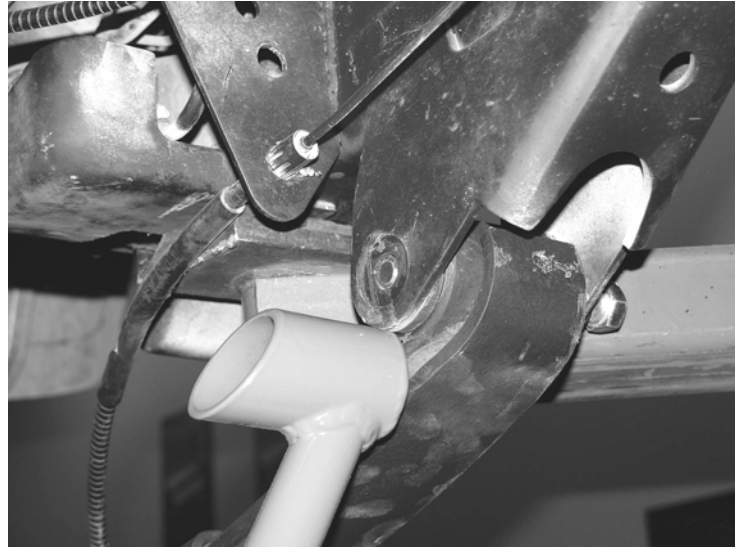
1. Disconnect the negative terminal on the battery. Park the Jeep on level ground and set the emergency brake. Jack up the rear end of the Jeep and support the frame at the rear frame rails with jack stands. **NEVER WORK UNDER AN UNSUPPORTED VEHICLE.** Remove the rear tires.
2. Locate FT50255 Trac Bar Axle Mount “weld on” and supplied $\frac{1}{2}$ " x $2\frac{3}{4}$ " hardware. Position the bracket on the driver's side axle and into the factory trac bar mount (clean the axle tube of any paint or grease). Insert the $\frac{1}{2}$ " hardware and tighten only enough to hold the bracket to the axle for welding at this time (**make sure bracket is flush on axle tube**). Weld the bracket to axle housing. Paint the bracket and axle housing after they have cooled. SEE PHOTOS BELOW.

ONLY AN EXPERIENCED CERTIFIED WELDER SHOULD COMPLETE THIS INSTALLATION



3. Locate the FT50258 Traction Bar Crossmember. Remove the C-Lock nuts from the front bolts on the leaf springs and pull

the bolts out just so that the end of the bolt is flush with the spring mount. Place the crossmember up to the spring mounts (**main bar of the crossmember will mount in front of the leaf springs**) and re-install the bolts and hardware. (leave loose). SEE PHOTOS BELOW.



4. Locate FT50256 (driver) and FT50257 (pass.) Crossmember frame brackets and supplied $\frac{1}{2}$ " x $4\frac{1}{2}$ " bolts and hardware. Place the brackets on the crossmembers so the angled face of the bracket is facing forward on the Jeep and install the hardware (leave loose). Rotate the crossmember with the brackets up onto the frame until the bottom of the bracket is flush with the bottom of the frame. Using a paint pen or punch, mark the holes of the brackets onto the frame. Swing the crossmember and brackets down from the frame. SEE PHOTOS AND DIAGRAM ON NEXT PAGE.

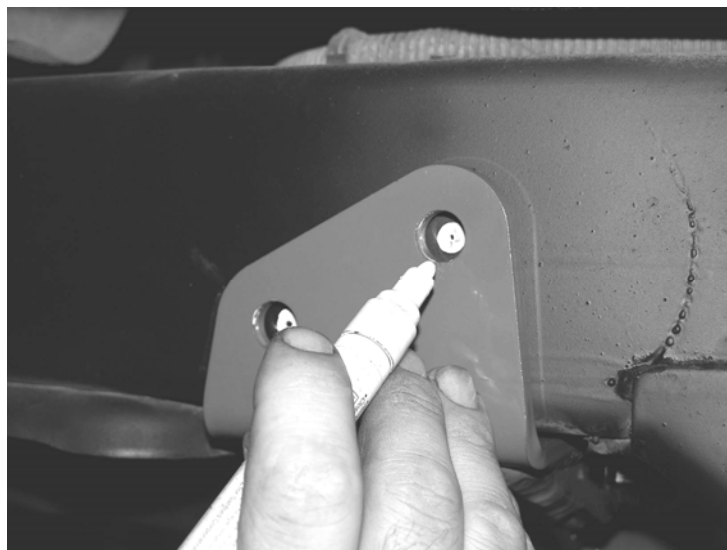
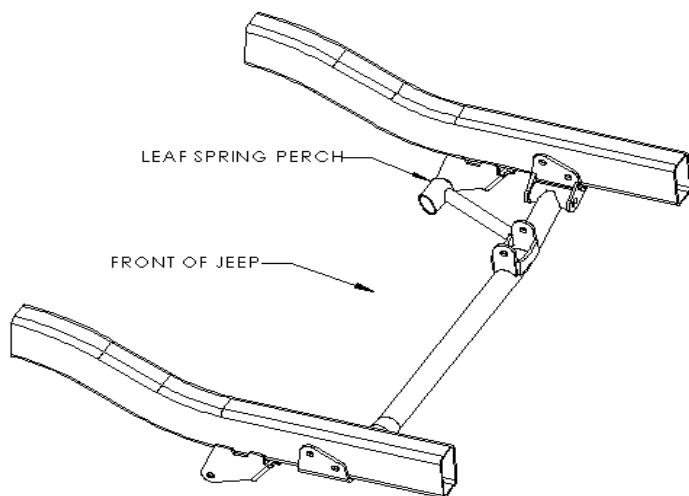


Photo of Driver's side

5. Use a drill with a long $\frac{1}{4}$ " drill bit, drill the two holes on the outside of the frame completely through the frame. **IT IS VERY IMPORTANT TO DRILL THESE HOLES STRAIGHT!!** Follow with a $\frac{7}{16}$ " drill bit completely through both sides of the frame. Using a $\frac{5}{8}$ " drill bit, **ONLY** drill the outer hole out to $\frac{5}{8}$ ". **USE CARE WHEN DRILLING THROUGH THE FRAME AS THERE ARE FUEL LINES AND ELECTRICAL ON THE BACKSIDE OF THE FRAME, USE CARE NOT TO DRILL INTO THEM. SEE PHOTOS BELOW AND ON NEXT PAGE.**

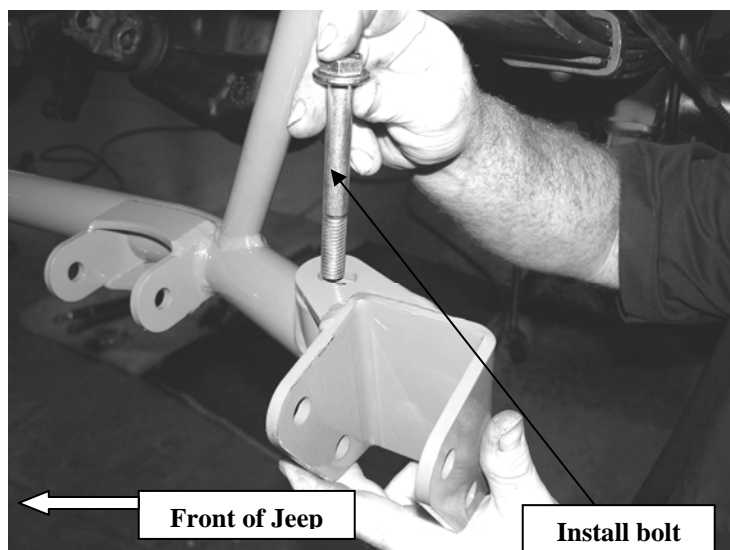


Photo of Driver's side

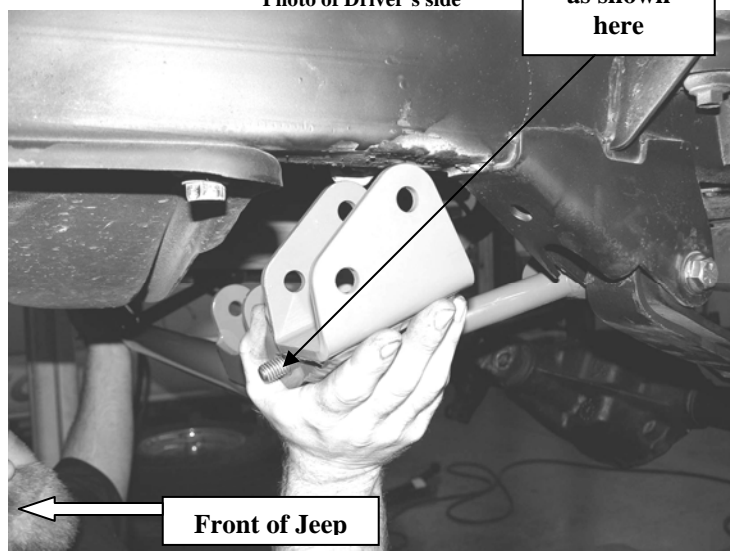
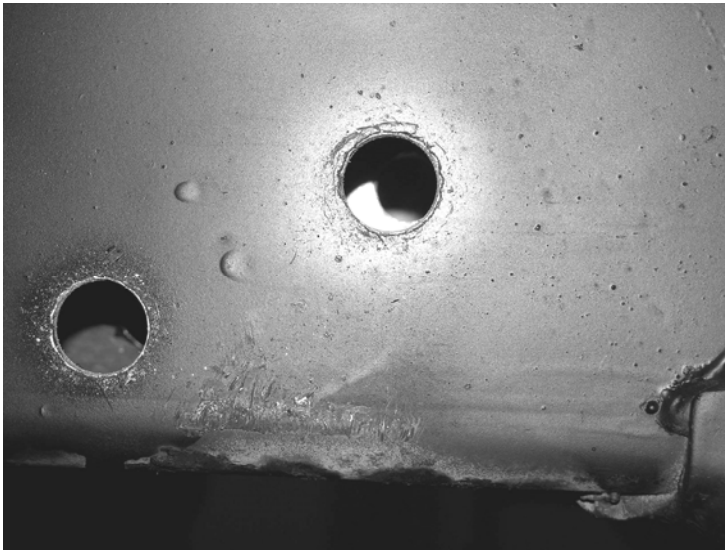
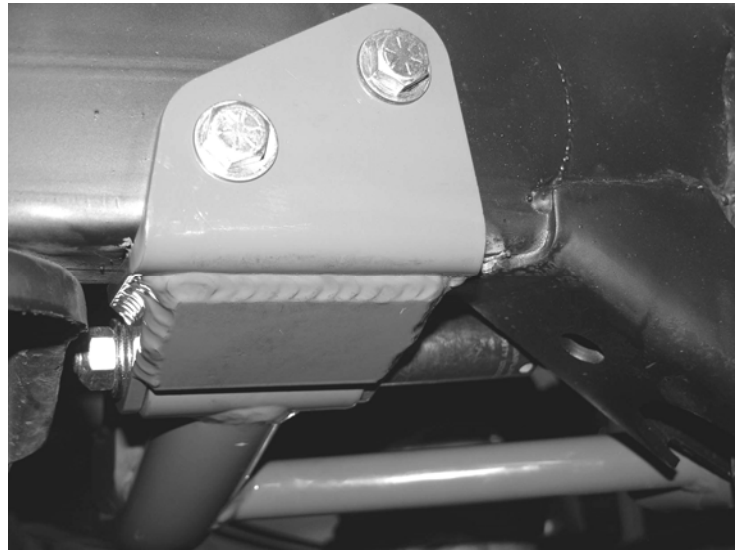
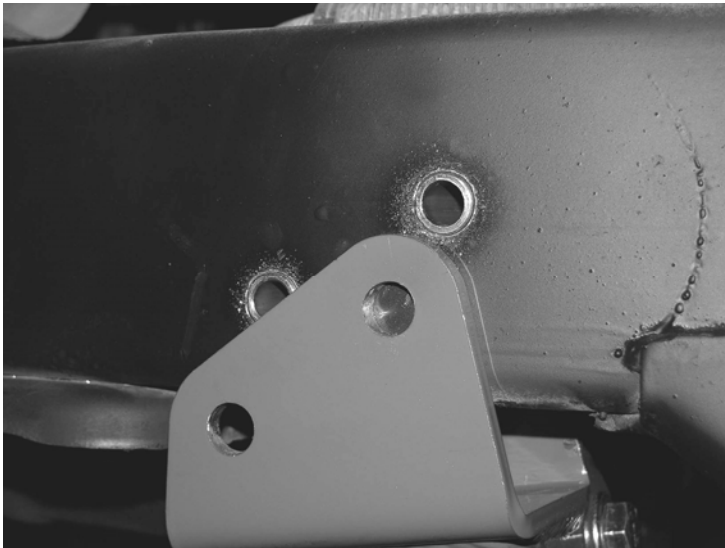


Photo of Driver's side

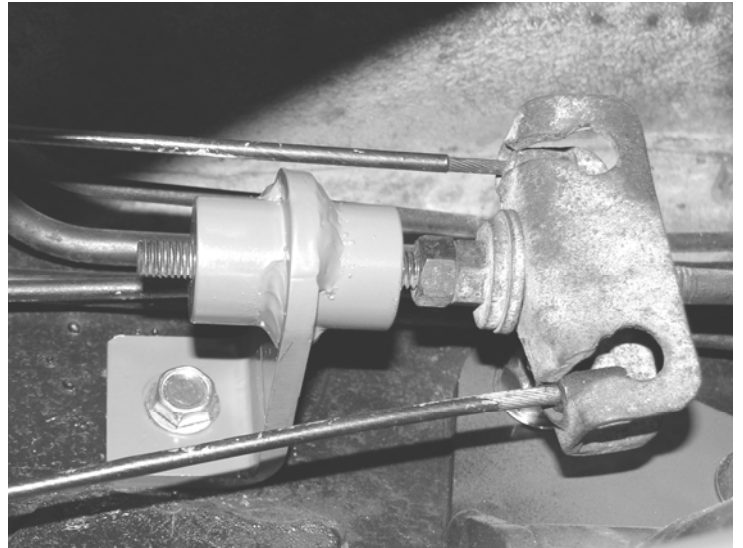




6. Insert two of the supplied 7/16" I.D. frame sleeves in into the previously drilled holes. Swing the crossmember back up onto the frame and attach the brackets using 7/16" x 3 3/4" " bolts and washers. Torque the 7/16" bolts to 50 ft. lbs. and the 1/2" bolts to 75 ft. lbs. SEE PHOTOS BELOW AND IN NEXT COLUMN.



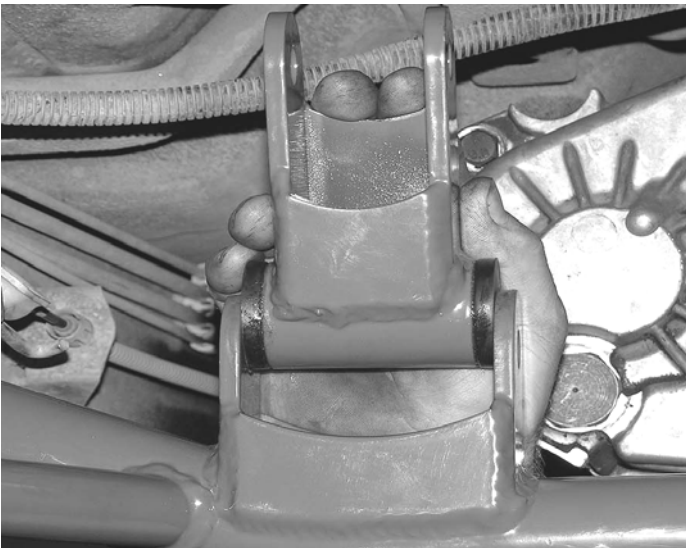
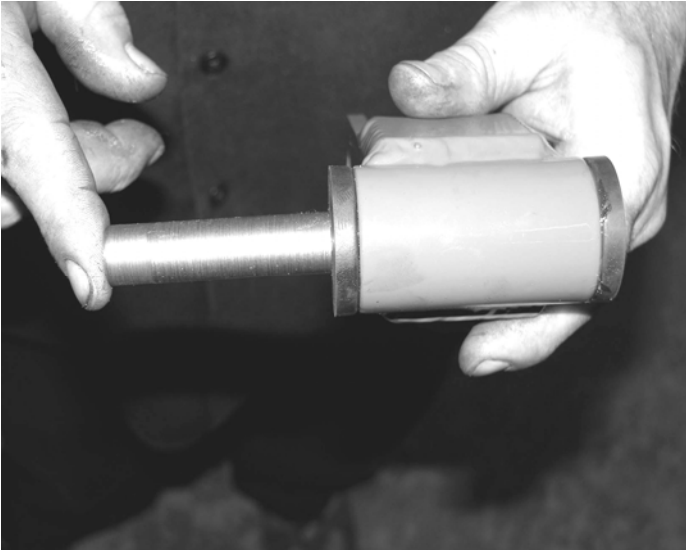
7. Locate FT50268 E-Brake Cable Guide and supplied 5/16" self-threading bolt. Place the cable guide onto the end of the e-brake adjuster so that it is in the middle of the stud and flush on the frame. **(this will keep the cable equalizer bar above the traction bar crossmember)**. Use a paint pen or punch to mark the location of the new hole. Remove the guide and drill a 17/64" hole. Place the guide back onto the frame and install the self-threading bolt. (do not over tighten). SEE PHOTO BELOW



8. Locate FT50245 Traction Bar, FT95243 Heim Joint, FTS98002 (2) Solid Heim Joints and supplied 3/4" jam nuts. Thread the jam nuts all the way down onto the heim joints. Thread the two solid hiems into the rear of the trac bar and the regular heim into the traction bar. Set all the hiems all the way into the traction bar. (this is just a starting point, final adjustments will be made when the Jeep is on the ground). Leave jam nuts loose.

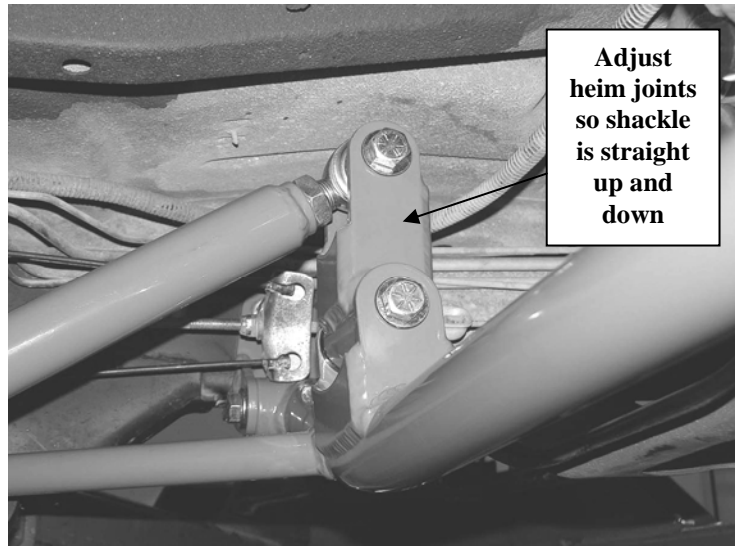
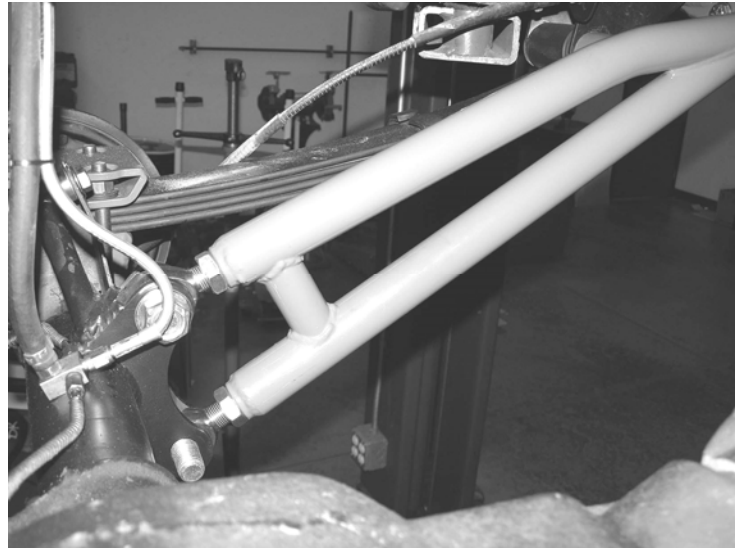
9. Locate FT50259 Traction Bar Shackle and the supplied bushings and 1/2" I.D. sleeves. Apply some of the provided

lube to the bushings inside and out and insert them into the shackle. Then press the sleeve into the bushings. Use the supplied $\frac{1}{2}$ " x $4\frac{1}{2}$ " bolt and hardware and install into the shackle mount on the traction bar crossmember with the short gusset toward the rear of the Jeep. Torque to 75 ft-lb. SEE PHOTOS BELOW.



10. **With the Jeep on the ground**, locate the supplied $\frac{3}{4}$ " x $2\frac{1}{2}$ " and $\frac{1}{2}$ " x 3" bolts, FTS43 Mis-Alignments, and hardware. Position the assembled traction bar into the shackle with the mis-alignments and $\frac{1}{2}$ " hardware first, then the axle mount with the $\frac{3}{4}$ " hardware. Once installed, the shackle needs to be straight up and down. Make adjustments to the hiems equally as necessary to achieve this. Tighten the jam nuts and on the hiems. Torque the $\frac{3}{4}$ " hardware to 110 ft.

lbs. and the $\frac{1}{2}$ " hardware to 75 ft. lbs. SEE PHOTOS BELOW.



11. Torque the leaf spring 9/16" bolts to 95 ft. lbs.
12. Re-torque all the hardware after 200 miles.

RETORQUE ALL NUTS, BOLTS AND LUGS AFTER 50 MILES AND PERIODICALLY THEREAFTER
For technical assistance call: 909-597-7800

Product Warranty and Warnings-

Fabtech provides a Limited Lifetime Warranty to the original retail purchaser who owns the vehicle, on which the product was originally installed, for defects in workmanship and materials.

The Limited Lifetime Warranty excludes the following Fabtech items; bushings, bump stops, ball joints, tie rod ends, limiting straps, cross shafts, heim joints. These parts are subject to wear and are not considered defective when worn. They are warranted for 60 days from the date of purchase for defects in workmanship.

Take apart shocks are considered a serviceable shock with a one year warranty on leakage only. Service seal kits are available separately for future maintenance. All other shocks are covered under our Limited Lifetime Warranty.

Fabtech does not warrant any product for finish, alterations, modifications and/or installation contrary to Fabtech's instructions. Alterations to the finish of the parts including but not limited to painting, powdercoating, plating and/or welding will void all warranties. Some finish damage may occur to parts during shipping which is considered normal and is not covered under warranty.

Fabtech products are not designed nor intended to be installed on vehicles used in race applications or for racing purposes or for similar activities. (A "RACE" is defined as any contest between two or more vehicles, or any contest of one or more vehicle against the clock, whether or not such contest is for a prize). This warranty does not include coverage for police or taxi vehicles, race vehicles, or vehicles used for government or commercial purposes. Also excluded from this warranty are sales outside of the United States of America.

Installation of most suspension products will raise the center of gravity of the vehicle and will cause the vehicle to handle differently than stock. It may increase the vehicle's susceptibility to a rollover, on road and off road, at all speeds. Extreme care should be taken to operate the vehicle safely at all times to prevent rollover or loss of control resulting in serious injury or death. Fabtech front end Desert Guards may impair the deployment or operation of vehicles equipped with supplemental restraining systems/air bag systems and should not be installed if the vehicle is equipped as so.

Fabtech makes every effort to ensure suspension product compatibility with all vehicles listed in the catalog, but due to unknown auto manufacturers production changes and/or inconsistencies by the auto manufacturer, Fabtech cannot be responsible for 100% compatibility, including the fitment of tire and wheel sizes listed. The Tire and Wheel sizes listed in Fabtech's catalog are only a guideline for street driving with noted fender trimming. Fabtech is not responsible for damages to the vehicle's body or tires.

Fabtech's obligation under this warranty is limited to the repair or replacement, at Fabtech option, of the defective product only. All costs of removal, installation or re-installation, freight charges, incidental or consequential damages are expressly excluded from this warranty. Fabtech is not responsible for damages and/or warranty of other vehicle parts related or non related to the installed Fabtech product. This warranty is expressly in lieu of all other warranties expressed or implied. This warranty shall not apply to any product that has been subject to accident, negligence, alteration, abuse or misuse as determined by Fabtech.

Fabtech suspension components must be installed as a complete system including shocks as shown in our current catalog. All warranties will become void if Fabtech parts are combined and/or substituted with other aftermarket suspension products. Combination and/or substitution of other aftermarket suspension parts may cause premature wear and/or product failure resulting in an accident causing injury or death. Fabtech does not warrant products not manufactured by Fabtech.

Installation of Fabtech product may void the vehicles factory warranty; it is the consumer's responsibility to check with their local vehicle's dealer for warranty disposition before the installation of the product.

It is the responsibility of the distributor and/or the retailer to review all warranties and warnings of Fabtech products with the consumer prior to purchase.

Fabtech reserves the right to supercede, discontinue, change the design, finish, part number and, or application of parts when deemed necessary without written notice. Fabtech is not responsible for misprints or typographical errors within the catalog or price sheet.