



www.fabtechmotorsports.com

**4331 EUCALYPTUS AVE. ~~ CHINO, CA 91710
909-597-7800 Fax 909-597-7185**

**1997-2002 FORD 2 WHEEL DRIVE EXPEDITION
FTS97159-3 3" REAR AIR BAG SPACER KIT**

PARTS LIST:

- | | |
|--|---|
| 1 EA. TRACK BAR BRACKET FT97159-3-1 | 2 EA. BUMP STOP EXTENSIONS FT97159-3-2 |
| 1 EA. SENSOR BRACKET FT97159-3-3 | 2 EA. URETHANE BUMP STOPS FTS86 |
| 1 EA. 3/8" X 1" BOLT | 1 EA. 3/8" NYLOCK NUT |
| 2 EA. 3/8" FLAT WASHERS | 1 EA. 9/16" X 3" BOLT |
| 2 EA. 9/16" FLAT WASHER | 1 EA. 9/16" NYLOCK NUT |
| 1 EA. 7/16" X 1 1/2" BOLT | 4 EA. 7/16" FLAT WASHER |
| 1 EA. 7/16" NYLOCK NUT | 2 EA. 7/16" X 1 1/4" BOLT |
| 2 EA. FT90038 NUT TAB | 1 EA. THEARD LOCKING COMPOUND |

CHECK ALL PARTS INCLUDED IN THIS KIT TO THE PARTS LIST ABOVE BEFORE BEGINNING INSTALLATION OF THE KIT. IF ANY PIECES ARE MISSING, CONTACT FABTECH AT 909-597-7800

TOOL LIST:

**JACK STANDS
FLOOR JACK
ASSORTED METRIC WRENCHES AND SOCKETS
DRILL WITH 7/16" BIT**

READ ALL INSTRUCTIONS THOROUGHLY FROM START TO FINISH BEFORE BEGINNING INSTALLATION!

THIS KIT REQUIRES THE INSTALLATION OF FTS7265 REAR SHOCKS, WHICH ARE NOT INCLUDED WITH THIS KIT.

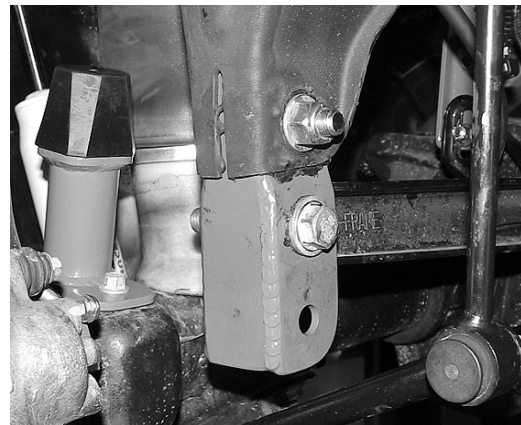
IF YOU HAVE ANY PROBLEMS WITH THE AIRBAGS INFLATING AND RETURNING TO HEIGHT, DISCONNECT THE NEGATIVE BATTERY CABLE FOR 10 MINUTES TO RESET THE COMPUTER.

INSTRUCTIONS:

1. **Disconnect the negative battery cable**, this must be done to reset the rear airbag computer. Jack up the rear end of the truck and support the frame rails with jack stands. **NEVER WORK UNDER AN UNSUPPORTED VEHICLE!** Remove the rear tires.
2. Support the rear differential with a floor jack lifting the rear axle enough to compress the rear shocks $\frac{1}{2}$ ". Locate the ride height sensor where it attaches to the track bar mount. Remove the lower nut and separate the sensor from the track bar. Remove both rear shocks.
3. Disconnect the upper track bar mount from the frame. Save the original bolt and nut, it will be reused later. Remove the bump stops from the differential. Thread the urethane bump stops onto the bump stop extensions. Using a drill, drill the original hole open to $\frac{7}{16}$ ", attach the bump stop extensions to the differential pad using the supplied $\frac{7}{16}$ x $1\frac{1}{4}$ " bolts, washer, and nut tab FT90038, along with a small amount of the supplied thread locking compound (the nut tab will be inserted from the front side of the axle) and torque to 35lbs. Make sure you align the locator pin in the extension with the hole in the axle pad. SEE PHOTO BELOW.



4. Take the track bar drop bracket and slide it inside the upper track bar frame bracket. Insert the supplied $\frac{9}{16}$ " bolt with a $\frac{9}{16}$ " flat washer through the original track bar bolt hole of the frame bracket and the $\frac{9}{16}$ " hole of the track bar drop bracket. Place a $\frac{9}{16}$ " flat washer and nylock nut onto the $\frac{9}{16}$ " bolt, do not tighten. Locate the $\frac{7}{16}$ " hole on the outside edge of the original track bar bracket, it should line up with the $\frac{7}{16}$ " hole in the track bar drop bracket. Use the supplied $\frac{7}{16}$ " bolt, flat washers and nylock nut to secure the track bar drop bracket to the frame, if the holes are not perfectly aligned you can use a $\frac{7}{16}$ " drill to remove any excess material. Tighten the $\frac{7}{16}$ " bolt to 35 ft./lbs. followed by the $\frac{9}{16}$ " bolt to 75 ft./lbs. SEE PHOTO IN NEXT COLUMN.



5. Install the new rear shocks, using the sleeves supplied with this kit. Slide the track bar into the drop bracket and using the upper bolthole, reinstall the original bolt and torque to 75 ft./lbs.
6. Attach the ride sensor extension bracket to the mounting tab on the differential using the supplied $\frac{3}{8}$ " nut, bolt and washers. Align the angled side of the bracket with the end of the sensor mount, centering it in the adjustment slot and torque the bolt to 28 ft/lbs. Attach the sensor to the bottom hole in the extension bracket using the original hardware. Torque to factory spec. SEE PHOTOS BELOW.



7. Reinstall the rear tires and torque the lug nuts to the factory specifications found in your owners manual. Raise the floor jack supporting the rear end of the truck, remove the jack stands and set the vehicle on the ground.

8. Reconnect the negative battery cable and start the engine. The rear airbags should slowly inflate to set the new ride height. After the airbags are fully inflated you may have to make an adjustment to the airbag sensor mount to properly level the vehicle. Move the sensor up or down in the adjustment slot as necessary to level the vehicle.

9. Drive the vehicle 5 miles and recheck the ride height and lug nut torque. Make any necessary adjustments to the ride height sensor. Make note of the final measurement from the top of the rear fender opening to the center of the axle and recheck it after the first 50 miles. Once the height is properly set, no future adjustments will be necessary.
10. Check front-end alignment and set to factory specifications. Re-adjust headlights.

RETORQUE ALL NUTS, BOLTS AND LUGS AFTER 50 MILES AND PERIODICALLY THEREAFTER.

For technical assistance call: 909-597-7800

Product Warranty and Warnings-

Fabtech provides a Limited Lifetime Warranty to the original retail purchaser who owns the vehicle, on which the product was originally installed, for defects in workmanship and materials.

The Limited Lifetime Warranty excludes the following Fabtech items; bushings, bump stops, ball joints, tie rod ends, limiting straps, cross shafts, heim joints. These parts are subject to wear and are not considered defective when worn. They are warranted for 60 days from the date of purchase for defects in workmanship.

Take apart shocks are considered a serviceable shock with a one year warranty on leakage only. Service seal kits are available separately for future maintenance. All other shocks are covered under our Limited Lifetime Warranty.

Fabtech does not warrant any product for finish, alterations, modifications and/or installation contrary to Fabtech's instructions. Alterations to the finish of the parts including but not limited to painting, powdercoating, plating and/or welding will void all warranties. Some finish damage may occur to parts during shipping which is considered normal and is not covered under warranty.

Fabtech products are not designed nor intended to be installed on vehicles used in race applications or for racing purposes or for similar activities. (A "RACE" is defined as any contest between two or more vehicles, or any contest of one or more vehicle against the clock, whether or not such contest is for a prize). This warranty does not include coverage for police or taxi vehicles, race vehicles, or vehicles used for government or commercial purposes. Also excluded from this warranty are sales outside of the United States of America.

Installation of most suspension products will raise the center of gravity of the vehicle and will cause the vehicle to handle differently than stock. It may increase the vehicle's susceptibility to a rollover, on road and off road, at all speeds. Extreme care should be taken to operate the vehicle safely at all times to prevent rollover or loss of control resulting in serious injury or death. Fabtech front end Desert Guards may impair the deployment or operation of vehicles equipped with supplemental restraining systems/air bag systems and should not be installed if the vehicle is equipped as so.

Fabtech makes every effort to ensure suspension product compatibility with all vehicles listed in the catalog, but due to unknown auto manufacturers production changes and/or inconsistencies by the auto manufacturer, Fabtech cannot be responsible for 100% compatibility, including the fitment of tire and wheel sizes listed. The Tire and Wheel sizes listed in Fabtech's catalog are only a guideline for street driving with noted fender trimming. Fabtech is not responsible for damages to the vehicle's body or tires.

Fabtech's obligation under this warranty is limited to the repair or replacement, at Fabtech option, of the defective product only. All costs of removal, installation or re-installation, freight charges, incidental or consequential damages are expressly excluded from this warranty. Fabtech is not responsible for damages and/or warranty of other vehicle parts related or non related to the installed Fabtech product. This warranty is expressly in lieu of all other warranties expressed or implied. This warranty shall not apply to any product that has been subject to accident, negligence, alteration, abuse or misuse as determined by Fabtech.

Fabtech suspension components must be installed as a complete system including shocks as shown in our current catalog. All warranties will become void if Fabtech parts are combined and/or substituted with other aftermarket suspension products. Combination and/or substitution of other aftermarket suspension parts may cause premature wear and/or product failure resulting in an accident causing injury or death. Fabtech does not warrant products not manufactured by Fabtech.

Installation of Fabtech product may void the vehicles factory warranty; it is the consumer's responsibility to check with their local vehicle's dealer for warranty disposition before the installation of the product.

It is the responsibility of the distributor and/or the retailer to review all warranties and warnings of Fabtech products with the consumer prior to purchase.

Fabtech reserves the right to supercede, discontinue, change the design, finish, part number and, or application of parts when deemed necessary without written notice. Fabtech is not responsible for misprints or typographical errors within the catalog or price sheet.