



INSTALLATION INSTRUCTIONS

FTS26135		REAR COIL SPACER KIT
1	FT70312	REAR BUMP STOP EXTENSION (DRIVER)
1	FT70313	REAR BUMP STOP EXTENSION (PASS)
2	FT70409	BUMP STOP SPACER
2	FT70408	REAR COIL SPACER
1	FT70383	HARDWARE SUBASSEMBLY

FT70383		HARDWARE SUBASSEMBLY
1	FT26125i	INSTRUCTIONS
2	FT89034	WASHER 1.250 X .395 X .250
2	FT83239	SLEEVE 1.500 X .760 X .300
1	FT70384	HARDWARE KIT
1	FTAS12	STICKER
1	FTAS16	DRIVER WARNING DECAL
1	FTREGCARD	REGISTRATION CARD

FT70384 - HARDWARE KIT		LOCATION
6	3/8" SAE WASHER	
6	3/8-16 C-LOCK NUT	
4	M8-1.25 X 60MM HEX BOLT	
4	M8 SPLIT LOCK WASHER	
4	M8 FLAT WASHER	
1	THREAD LOCKING COMPOUND	

2025 TOYOTA 4RUNNER 4WD REAR COIL SPACER KIT

FTS26135

NOTE: TO ORDER WEARABLE REPLACEMENT COMPONENTS DO NOT USE PART NUMBERS SHOWN ON THIS INSTRUCTION SHEET. GO TO FABTECH WEBSITE AND LOOK UP WEARABLE REPLACEMENT PARTS TO FIND THE PROPER PART NUMBER TO ORDER.

Fabtech Motorsports | 2213 Industrial Park Rd. Lancaster, SC 29720

Tech Line: 909-597-7800 | Web: www.fabtechmotorsports.com

- TOOL LIST -

Required Tools (Not Included)

Basic Hand Tools
Floor Jack
Jack Stands
Assorted Metric and S.A.E sockets, and Allen wrenches
Torque Wrench
Die Grinder w/ Cutoff Wheel or Sawzall

- PRE-INSTALLATION NOTES -

For technical assistance call: **909-597-7800** or e-mail: **info@fabtechmotorsports.com**

READ THIS BEFORE YOU BEGIN INSTALLATION -

Check all parts to the parts list above before beginning installation. If any parts are missing contact Fabtech at 909-597-7800 and a replacement part will be sent to you immediately.

This suspension and shocks have been designed to be installed on a stock vehicle.

Read all instructions thoroughly from start to finish before beginning the installation. If these instructions are not properly followed severe frame, driveline and / or suspension damage may occur.

Check your local city and state laws prior to the installation of this system for legality. Do not install if not legal in your area.

Prior to the installation of this suspension system perform a front end alignment and record. Do not install this system if the vehicle alignment is not within factory specifications. Check for frame and suspension damage prior to installation.

The installation of this suspension system should be performed by two professional mechanics. This suspension must be installed with Fabtech shock absorbers.

Installation of all fasteners requires the use of provided thread locking compound with proper torque values as indicated throughout the installation. Apply thread locking compound upon the final torque of the fastener.

WARNING- Installation of this system will alter the center of gravity of the vehicle and may increase roll over as compared to stock. Extreme care should be taken to operate the vehicle safely at all times to prevent rollover or loss of control resulting in serious injury or death.

Vehicles that receive oversized tires should check ball joints, uniballs, tie rods ends, pitman arm and idler arm every 2500-5000 miles for wear and replace as needed.

Verify differential fluid is at manufactures recommended level prior to kit installation. Installation of the kit will reposition the differential and the fill plug hole may be in a different position. (For example, if the manufacture recommends 3 quarts of fluid, make sure the diff has 3 quarts of fluid). Check your specific manual for correct amount of fluid.

Read all warnings and warranties on the last page of these instructions before starting installation.

FOOTNOTES -

- Does not fit models equipped with adaptive variable suspension (AVS) shocks.
- Does not fit Trailhunter Models
- Will not fit TRD Pro Models

- INSTRUCTIONS -

REAR SUSPENSION

1. Disconnect the negative terminal on the battery. Jack up the rear end of the truck and support the frame rails with jack stands. **NEVER WORK UNDER AN UNSUPPORTED VEHICLE!** Remove the rear wheels/tires.
2. Supporting the rear axle, disconnect the rear sway bar (If equipped) and remove the factory rear shocks. Slowly lower the rear axle and remove the rear coil springs and rubber isolators.
3. Locate the factory 3 holes on the upper coil mount. Using a 7/16" drill bit. Drill out the original holes. **SEE FIGURE 1**

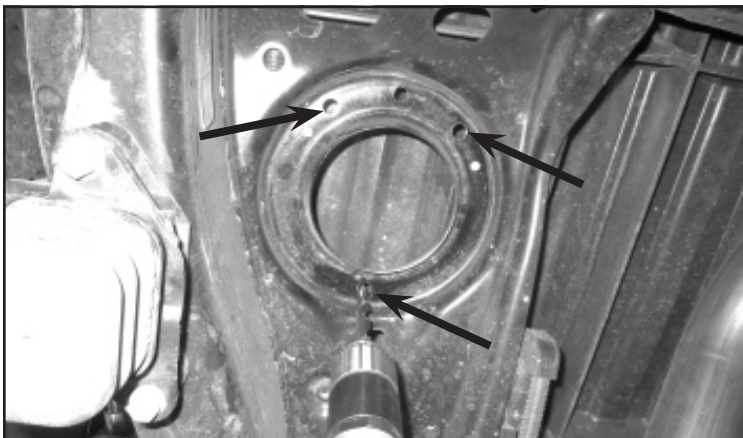


FIGURE 1 - STEP 3

4. Install FT70408 (Rear Spacer) and rubber isolator to the upper coil mounts using the supplied 3/8" nuts and washers. **SEE FIGURE 2**

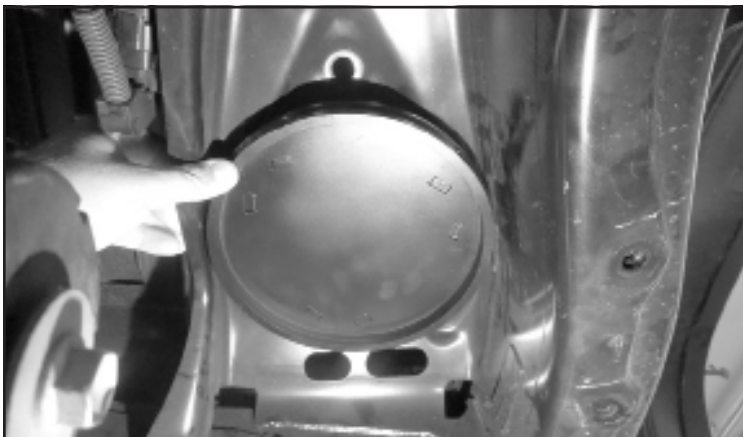


FIGURE 2 - STEP 4

5. Repeat steps on the opposite side.

6. Remove the factory rear bumpstops from the frame. Save hardware. **SEE FIGURE 3**

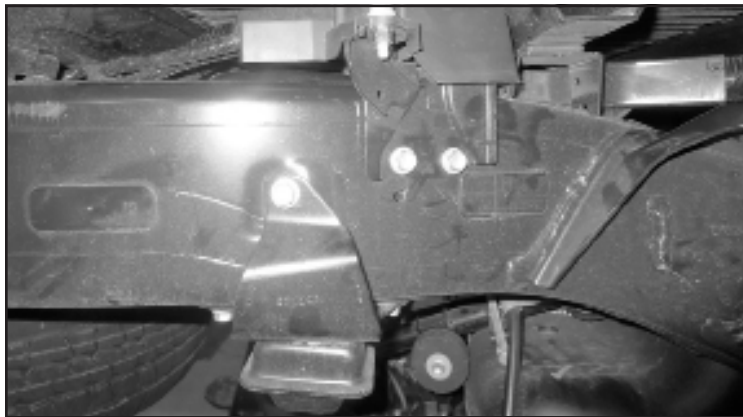


FIGURE 3 - STEP 6

7. Mark and cut the bumpstop brackets like shown in **FIGURE 4**



FIGURE 4 - STEP 7

8. Install FT70312 (Driver bumpstop bracket) & FT70313 (Pass bumpstop bracket) in the factory location using one factory bolt. **NOTE:** Install FT89034 (washer) on the backside of the bracket. **SEE FIGURES 5-6**

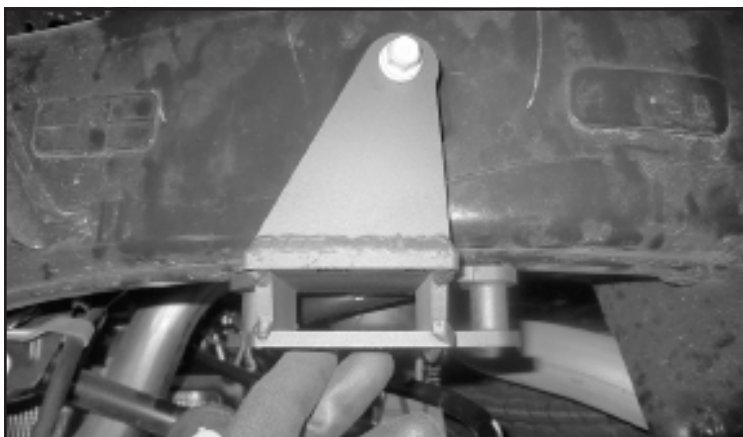


FIGURE 5 - STEP 8

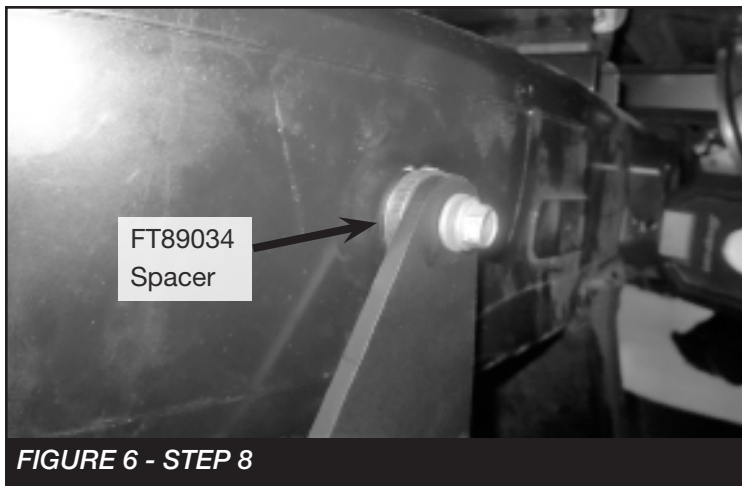


FIGURE 6 - STEP 8

9. Attach FT70409 (Bumpstop Spacer) to the top of the factory bumpstop then, Install the factory bumpstop to the new bracket using the supplied 8mm bolts and washers. Torque to 18 ft-lbs. **SEE FIGURES 7-8**



FIGURE 7 - STEP 9



FIGURE 8 - STEP 9

10. Repeat steps on the opposite side.

11. Reinstall the rear coil springs. **SEE FIGURE 10**



FIGURE 9 - STEP 11

12. Re-connect the sway bar (If Equipped).
13. Continue to install the rear shocks with the supplied instructions.
14. Install tires and wheels and torque lug nuts to wheel manufacturer's specifications. Turn front tires left to right and check for appropriate tire clearance. **Note** - Some oversized tires may require trimming of the front bumper & valance.
15. Check front end alignment and set to factory specifications. Readjust headlights.
16. Recheck all bolts for proper torque. **RE-TORQUE ALL NUTS, BOLTS AND LUGS AFTER 50 MILES AND PERIODICALLY THEREAFTER UNTIL TORQUE VALUES ARE RETAINED.**
17. Install Driver Warning Decal. Complete product registration card and mail to Fabtech in order to receive future safety and technical bulletins on this suspension.
18. Review all included warnings and warranties with consumer

For technical assistance call: **909-597-7800**

- Product Warranty & Warnings -

Fabtech provides a Limited Lifetime Warranty to the original retail purchaser who owns the vehicle, on which the product was originally installed, for defects in workmanship and materials.

The Limited Lifetime Warranty excludes the following Fabtech items; bushings, bump stops, ball joints, Uniball bearings, tie rod ends, limiting straps, cross shafts, heim joints and driveshafts. These parts are subject to wear and are not considered defective when worn. They are warranted for 60 days from the date of purchase for defects in workmanship.

Dirt Logic take apart shocks are considered a serviceable shock with a 1-year warranty against any manufacturer's defects. If a shock fails within the initial year of ownership, the owner must ship the shock to Fabtech for inspection and service. If after examination the shock is determined to have failed due to neglect, damage caused by improper installation, or any reason other than "normal wear and tear," the owner of the shock will be responsible for all service costs. Costs include labor, parts, and shipping. Service seal kits are available separately for future maintenance. All other shocks are covered under our Limited Lifetime Warranty.

Fabtech does not warrant any product for finish, alterations, modifications and/or installation contrary to Fabtech's instructions. Alterations to the finish of the parts including but not limited to painting, powder coating, plating and/or welding will void all warranties. Some finish damage may occur to parts during shipping, which is considered normal and is not covered under warranty.

Fabtech products are not designed nor intended to be installed on vehicles used in race applications or for racing purposes or for similar activities. This warranty does not include coverage for police, taxi, first responder vehicles, race vehicles, or vehicles used for government, commercial or fleet purposes. Also excluded from this warranty are sales outside of the United States of America.

Installation of most suspension products will raise the center of gravity of the vehicle and will cause the vehicle to handle differently than stock. It may increase the vehicle's susceptibility to a rollover, on road and off road, at all speeds. Extreme care should be taken to operate the vehicle safely at all times to prevent rollover or loss of control resulting in serious injury or death.

Oversized tires and wheels may decrease the vehicle's braking capacity. Drivers should always brake early and be aware of the increased the stopping distance of the vehicle. Drivers should adjust their driving habits to the effectiveness of the braking. Adjust your driving habits to these changes.

Failure to drive safely may result in serious injury or death to driver and passengers. Driver and passengers must ALWAYS wear your seat belts, avoid quick sharp turns and other sudden maneuvers