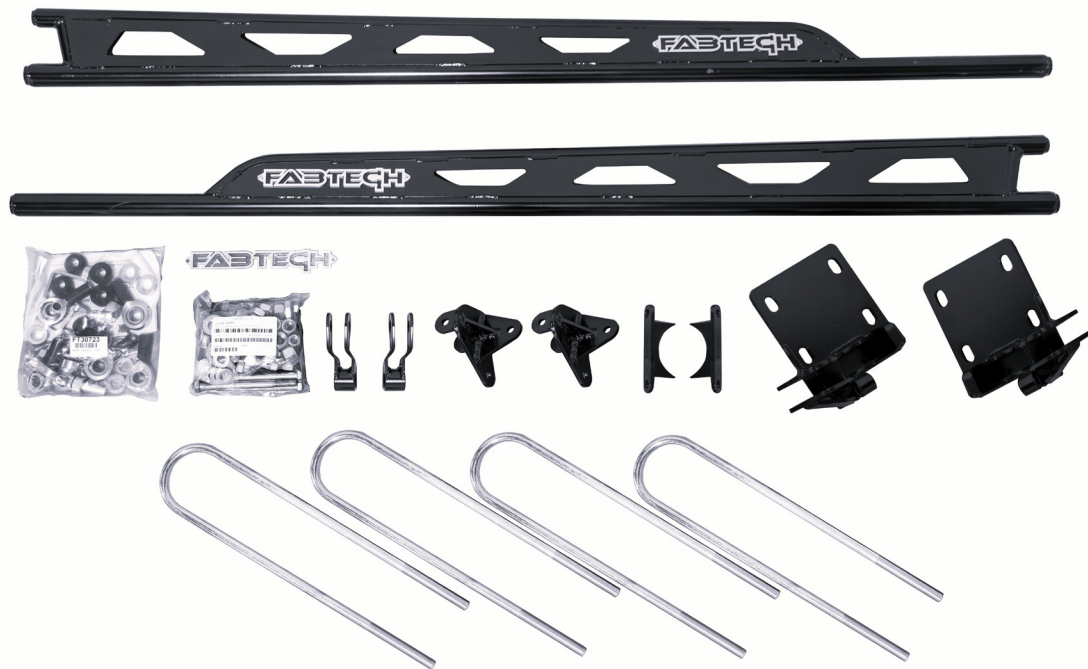




## INSTALLATION INSTRUCTIONS



**2023-2025 FORD F-250/F-350 SUPERDUTY**

**TRACTION BAR KIT**

**12 BOLT REAR END VEHICLES ONLY**

**FTS62010**

**Fabtech Motorsports** | 2213 Industrial Park Rd. Lancaster, SC 29720

**Tech Line:** 909-597-7800 | **Fax:** 909-597-7185 | **Web:** [www.fabtechmotorsports.com](http://www.fabtechmotorsports.com)

# - PARTS LIST - FORD F-250/F-350 TRACTION BAR KIT

| FTS62010 |         | FORD F-250/350 TRACTION BARS    |
|----------|---------|---------------------------------|
| 1        | FT31148 | HARDWARE SUBASSEMBLY            |
| 1        | FT31145 | AXLE BRACKET (DRIVER)           |
| 1        | FT31146 | AXLE BRACKET (PASSENGER)        |
| 1        | FT30740 | FRAME BRACKET (DRIVER)          |
| 1        | FT30741 | FRAME BRACKET (PASSENGER)       |
| 1        | FT30755 | HARDWARE KIT                    |
| 4        | FT749U  | U-BOLT RD 5/8-18 X 20.00 X 3.50 |
| 2        | FT90018 | TRACTION BAR SHACKLE ZINC       |
| 2        | FT31147 | UPPER REAR TRACTION BAR MOUNT   |
| 1        | FT90211 | TRACTION BAR 67" (DRIVER)       |
| 1        | FT90212 | TRACTION BAR 67" (PASSENGER)    |

| FT31148 |           | HARDWARE SUBASSEMBLY       |
|---------|-----------|----------------------------|
| 4       | FT1004    | SWAY BAR LINK BUSHING HALF |
| 8       | FT192     | SLEEVE 1.250 X .750 X .570 |
| 8       | FT20731   | TRACTION BAR SPACER        |
| 2       | FT30796   | NUT TAB                    |
| 1       | FT62010i  | INSTRUCTIONS               |
| 2       | FT66      | SLEEVE .625 X .509 X 2.000 |
| 2       | FT70136   | NUT TAB                    |
| 6       | FT95243   | 3/4" ROD END               |
| 1       | FTAS12    | STICKER FT BLUE 10X4       |
| 1       | FTAS16    | DRIVER WARNING DECAL       |
| 1       | FTREGCARD | REGISTRATION CARD          |

| FT30755 - HARDWARE KIT |                             | LOCATION      |
|------------------------|-----------------------------|---------------|
| 16                     | 1/2 SAE WASHER              |               |
| 6                      | 1/2-13 C-LOCK NUT           |               |
| 4                      | 1/2" LOCK WASHER            |               |
| 4                      | 1/2-13 X 1-1/2" HEX BOLT    |               |
| 2                      | 1/2-13 X 3-1/4" HEX BOLT G8 | FRAME BRACKET |
| 4                      | 1/2-13 X 6" HEX BOLT G8     | AXLE BRACKET  |
| 12                     | 3/4" SAE WASHER             |               |
| 6                      | 3/4-10 C-LOCK NUT           |               |
| 2                      | 3/4-10 X 2-1/2" HEX BOLT G8 | TRACTION BARS |
| 4                      | 3/4-10 X 3" HEX BOLT        |               |
| 6                      | JAM NUT 3/4-16 RH           |               |
| 8                      | 5/8 SAE WASHER              | UBOLTS        |
| 8                      | 5/8-18 NYLOCK NUT           |               |
| 1                      | THREAD LOCKING COMPOUND     |               |

## - TOOL LIST -

### ***Required Tools (Not Included)***

Basic Hand Tools  
Floor Jack  
Jack Stands  
Assorted Metric and S.A.E sockets, and Allen wrenches  
Torque Wrench

## - PRE-INSTALLATION NOTES -

For technical assistance call: **909-597-7800** or e-mail: **info@fabtechmotorsports.com**

### ***READ THIS BEFORE YOU BEGIN INSTALLATION -***

Check all parts to the parts list above before beginning installation. If any parts are missing contact Fabtech at 909-597-7800 and a replacement part will be sent to you immediately.

Read all instructions thoroughly from start to finish before beginning the installation. If these instructions are not properly followed severe frame, driveline and / or suspension damage may occur.

Check your local city and state laws prior to the installation of this system for legality. Do not install if not legal in your area.

Prior to the installation of this suspension system perform a front end alignment and record. Do not install this system if the vehicle alignment is not within factory specifications. Check for frame and suspension damage prior to installation.

The installation of this suspension system should be performed by two professional mechanics.

This suspension must be installed with Fabtech shock absorbers. Use the provided thread locking compound on all hardware.

**WARNING-** Installation of this system will alter the center of gravity of the vehicle and may increase roll over as compared to stock.

Vehicles that receive oversized tires should check ball joints, uniballs, tie rods ends, pitman arm and idler arm every 2500-5000 miles for wear and replace as needed.

Verify differential fluid is at manufactures recommended level prior to kit installation. Installation of the kit will reposition the differential and the fill plug hole may be in a different position. (For example, if the manufacture recommends 3 quarts of fluid, make sure the diff has 3 quarts of fluid). Check your specific manual for correct amount of fluid.

### ***FOOTNOTES -***

- Non dually models only**
- Installation of traction bars may not eliminate carrier bearing vibration on some vehicles**
- Fits 6" and 8" suspension systems only**

## - INSTRUCTIONS -

1. With the vehicle on a level surface. Disconnect the negative terminal on the battery. Jack up the rear end of the truck and support the frame rails with jack stands. **NEVER WORK UNDER AN UNSUPPORTED VEHICLE!** Remove the rear tires.
2. Locate both Fabtech traction bars and install the supplied FT95243 Heim joint and jam nut into the single tube end. Locate FT95243 Heim joints and jam nuts and install two into the end of the traction bar with the two-tube ends. You will need to thread them in so that 3/4" of thread (Including the Jam Nut) show. A minimum amount of 1" of thread should be threaded into the traction bars at all times. Thread engagement will vary due to truck heights. A starting point should be 70-1/4" from the front Heim to the top rear heim and 70-3/8" for the bottom.
3. **ONLY PERFORM THE FOLLOWING STEP FROM ONE SIDE OF THE VEHICLE AT A TIME.** Working from the driver side of the vehicle, locate the factory u-bolts and u-bolt plates and remove. **SEE FIGURES 1-2**

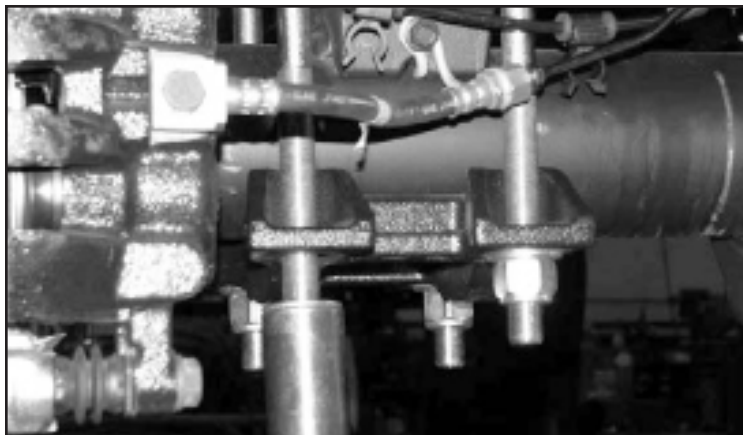


FIGURE 1 - STEP 3



FIGURE 2 - STEP 3

- **Note:** See Page 7 for modification of the ABS cover (If Equipped)

4. Locate the Fabtech lower axle bracket FT31145, upper axle bracket FT31147, four FT192 sleeves, FT749U u-bolts, washers and nuts. Slide the new u-bolts over the top of the spring in the factory configuration with factory lower plate. Install the sleeves and lower bracket on to the u-bolts under the axle. Leave u-bolt nuts loose at this time. **SEE FIGURES 3-4**

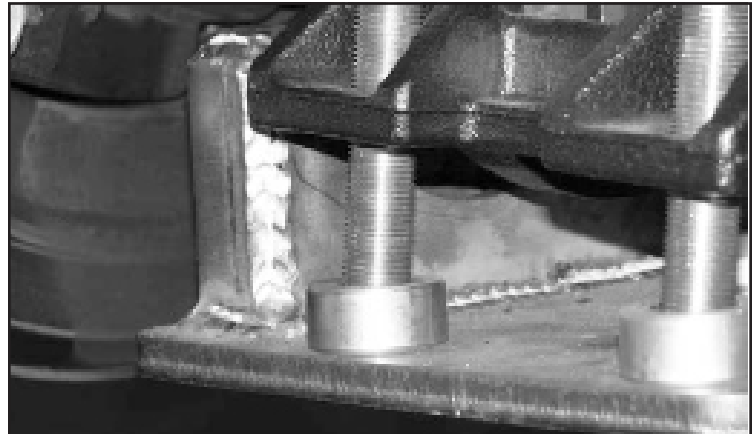


FIGURE 3 - STEP 4

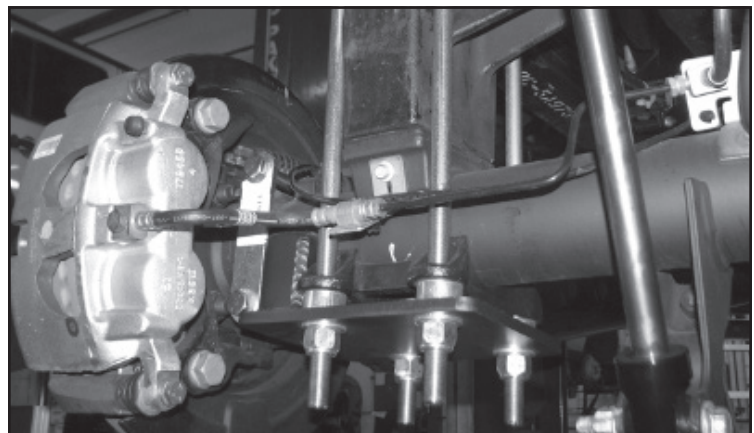


FIGURE 4 - STEP 4

5. Using two 1/2-13 x 6" bolts, washers and nuts, install the FT31147 upper clamp bracket on the backside of the axle housing.. Torque the u-bolt nuts to 170 ft-lbs and upper 1/2" hardware to 90 ft-lbs. **SEE FIGURE 5**

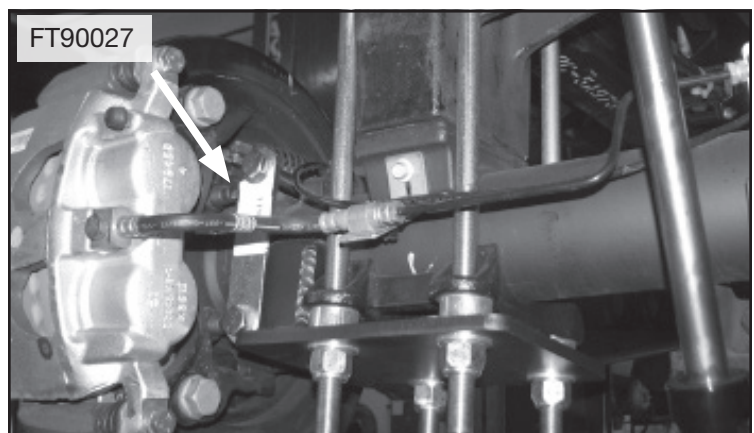


FIGURE 5 - STEP 5

6. Re-install the rear wheels and set the vehicle on the ground.



7. Locate the FT90018 (Shackle) and install (2) FT1004 (Bushings) and a FT66 (sleeve). Install the Shackle onto the Fabtech traction bar using the 3/4" X 2-1/2" bolt and hardware. Leave loose. Next, Install FT30740 (Driver frame mount) to the shackle using the 1/2" X 3-1/2" bolt and hardware. **SEE FIGURES 6-7 for proper configuration.**

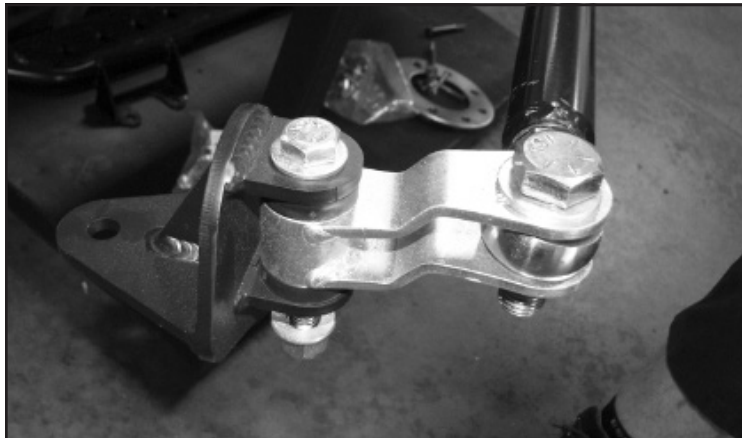


FIGURE 6 - STEP 7



FIGURE 7 - STEP 7

8. Install the traction bars to the **LOWER REAR AXLE MOUNT ONLY** using the FT20731 (spacers) on each side of the heim joints using the 3/4" X 3" bolts and hardware. Leave loose. **SEE FIGURES 8-9**

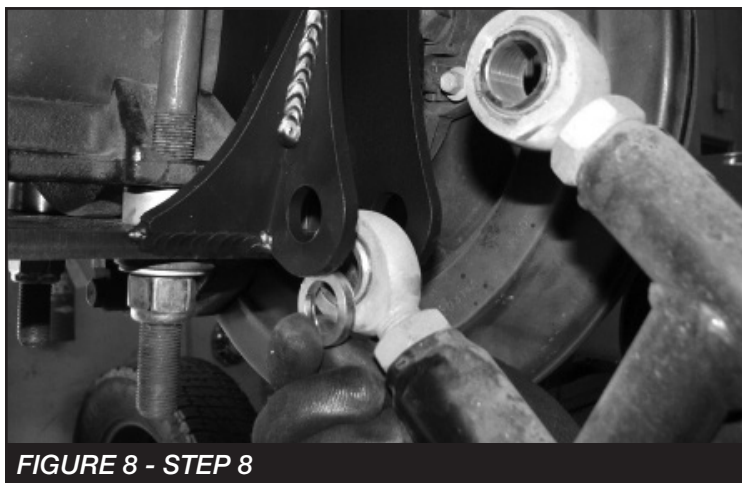


FIGURE 8 - STEP 8



FIGURE 9 - STEP 8

9. Swing the traction bar up to the frame. With the shackle up and down mark the two holes using the frame bracket as a template. **SEE FIGURE 10**

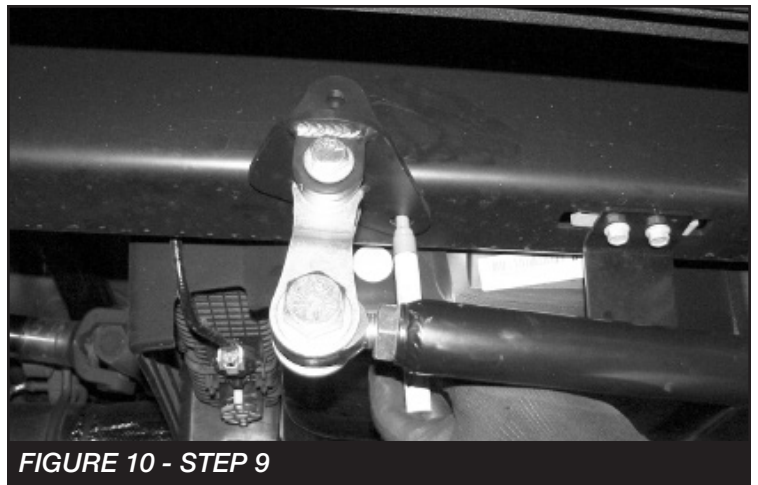


FIGURE 10 - STEP 9

10. Lower the traction bar Use a center punch and drill the two marked holes to 1/2" **SEE FIGURES 11-12**

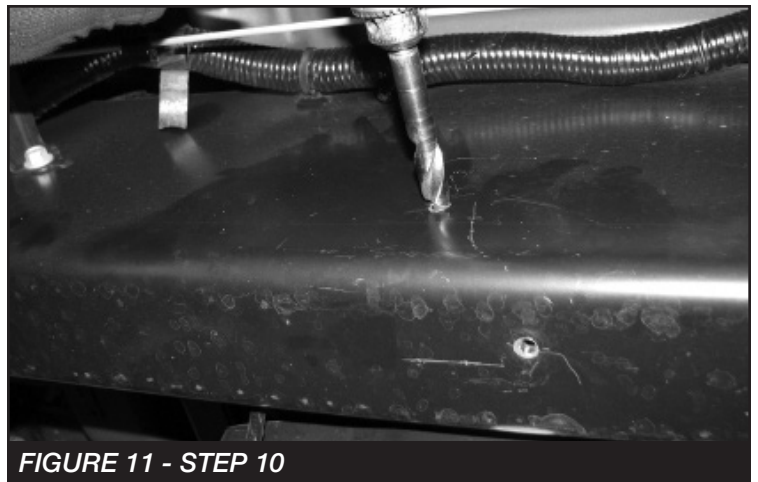
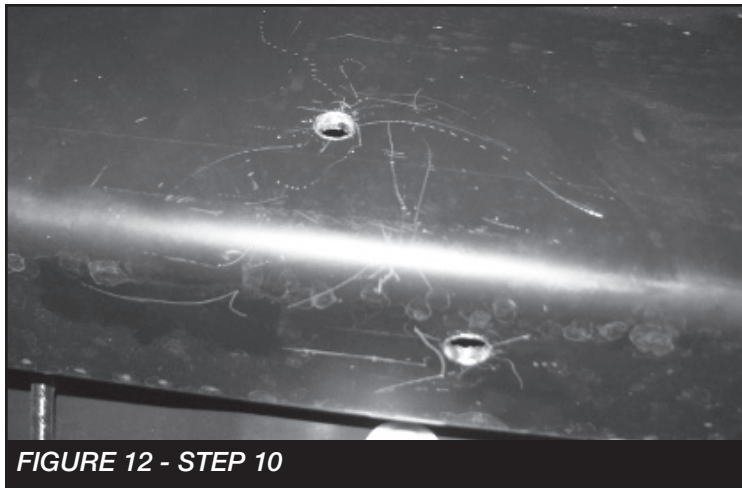
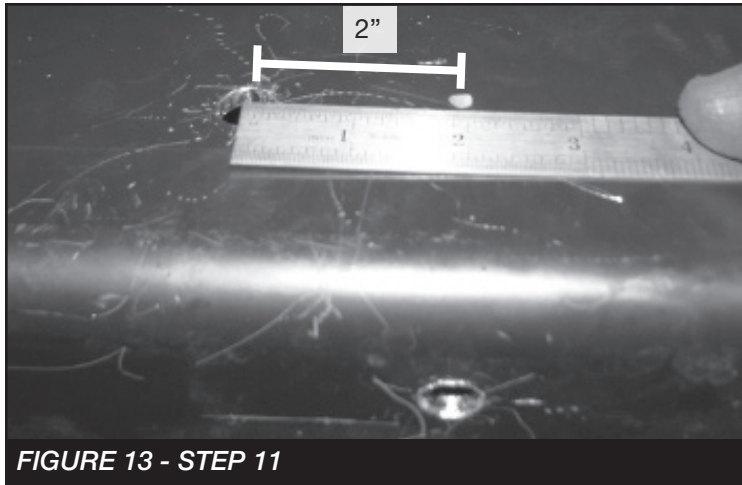


FIGURE 11 - STEP 10

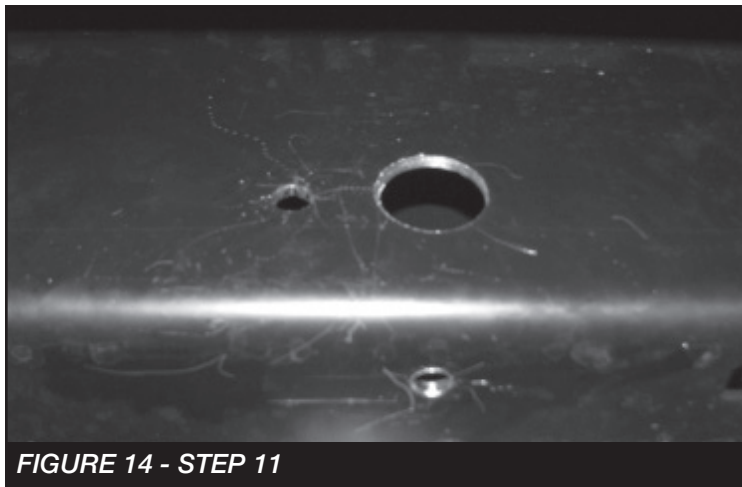


**FIGURE 12 - STEP 10**

11. Measure back 2" from the center of the hole drilled on the side of the frame and mark. Drill this hole out to 1-1/2" using a hole saw. **SEE FIGURES 13-14**

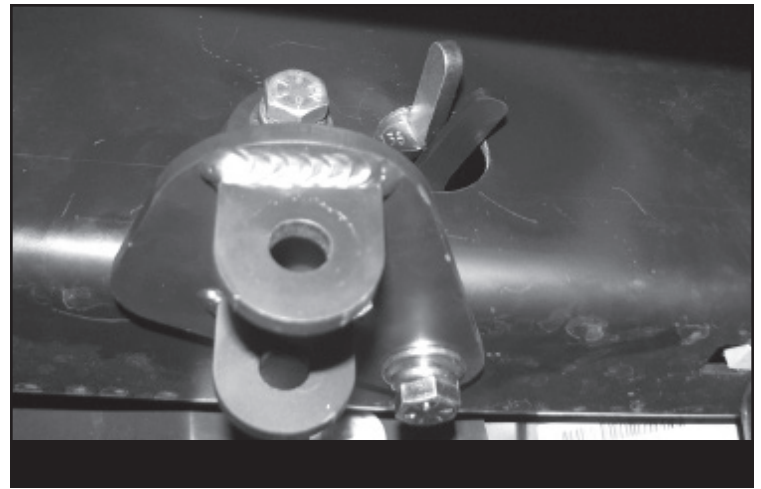


**FIGURE 13 - STEP 11**



**FIGURE 14 - STEP 11**

12. Remove the frame bracket from the shackle. Install the frame bracket to the frame using the FT70136 (Nut Tab), FT30796 (Nut Tab) and 1/2" X 1-1/2" bolt, split & lock washers. **NOTE: The FT70136 will be used for the side and FT30796 for the bottom hole.** Torque to 127 ft-lbs. **SEE FIGURE 15**



13. Install the traction bar to the frame bracket using the 3/4" X 2-1/2" hardware. Torque to 200 ft-lbs. Use the 3/4" x 3" hardware for the rear upper axle location. **NOTE: The heim may need to be adjusted to properly install the bolt.**
14. Repeat steps 3-13 on the passenger side.
15. Recheck all bolts for proper torque.
16. Install Driver Warning Decal. Complete product registration card and mail to Fabtech in order to receive future safety and technical bulletins on this suspension.

**Vehicles that will receive oversized tires should check ball joints, uniballs and all steering components every 2500-5000 miles for wear and replace as required.**

**RE-TORQUE ALL NUTS, BOLTS AND LUGS AFTER 50 MILES AND PERIODICALLY THEREAFTER.**

For technical assistance call: **909-597-7800**

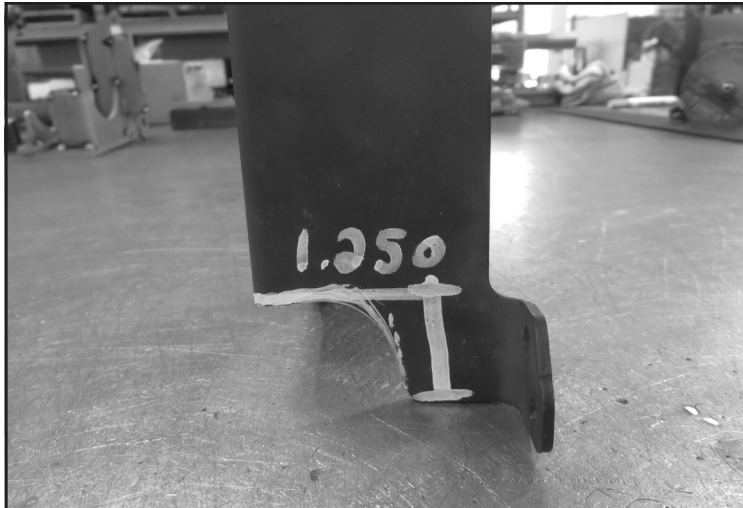
- **ABS System cover modification**

1. Remove the ABS cover from behind the brake dust shield. **SEE FIGURE 15**



**FIGURE 15 - STEP 1**

2. Radius 1.250" to the front corner of the cover to be able to clear the new bracket. **SEE FIGURE 16**



**FIGURE 16 - STEP 2**

3. Reinstall the ABS cover using the factory hardware. Repeat on the opposite side. **SEE FIGURE 17**



**FIGURE 17 - STEP 3**



## - Product Warranty and Warnings -

Fabtech provides a Limited Lifetime Warranty to the original retail purchaser who owns the vehicle, on which the product was originally installed, for defects in workmanship and materials.

The Limited Lifetime Warranty excludes the following Fabtech items; bushings, bump stops, ball joints, tie rod ends, limiting straps, cross shafts, heim joints and driveshafts. These parts are subject to wear and are not considered defective when worn. They are warranted for 60 days from the date of purchase for defects in workmanship.

Dirt Logic and Performance Coilover take apart shocks are considered a serviceable shock with a one year warranty on leakage only. Service seal kits are available separately for future maintenance. All other shocks are covered under our Limited Lifetime Warranty.

Fabtech does not warrant any product for finish, alterations, modifications and/or installation contrary to Fabtech's instructions. Alterations to the finish of the parts including but not limited to painting, powder coating, plating and/or welding will void all warranties. Some finish damage may occur to parts during shipping, which is considered normal and is not covered under warranty.

Fabtech products are not designed nor intended to be installed on vehicles used in race applications or for racing purposes or for similar activities. (A "RACE" is defined as any contest between two or more vehicles, or any contest of one or more vehicle against the clock, whether or not such contest is for a prize). This warranty does not include coverage for police or taxi vehicles, race vehicles, or vehicles used for government or commercial purposes. Also excluded from this warranty are sales outside of the United States of America.

Installation of most suspension products will raise the center of gravity of the vehicle and will cause the vehicle to handle differently than stock. It may increase the vehicle's susceptibility to a rollover, on road and off road, at all speeds. Extreme care should be taken to operate the vehicle safely at all times to prevent rollover or loss of control resulting in serious injury or death. Fabtech front end Desert Guards may impair the deployment or operation of vehicles equipped with supplemental restraining systems/air bag systems and should not be installed if the vehicle is equipped as so.

Fabtech makes every effort to ensure suspension product compatibility with all vehicles listed on the website, but due to unknown auto manufacturer's production changes and/or inconsistencies by the auto manufacturer, Fabtech cannot be responsible for 100% compatibility, including the fitment of tire and wheel sizes listed. The Tire and Wheel sizes listed in Fabtech's website are only a guideline for street driving with noted fender trimming. Fabtech is not responsible for damages to the vehicle's body or tires. Fabtech is not responsible for premature wear of factory components due to the installation of oversized tires and wheels.

Fabtech's obligation under this warranty is limited to the repair or replacement, at Fabtech option, of the defective product only. All costs of removal, installation or re-installation, freight charges, incidental or consequential damages are expressly excluded from this warranty. Fabtech is not responsible for damages and/or warranty of other vehicle parts related or non related to the installed Fabtech product. This warranty is expressly in lieu of all other warranties expressed or implied. This warranty shall not apply to any product that has been subject to accident, negligence, alteration, abuse or misuse as determined by Fabtech.

Fabtech suspension components must be installed as a complete system including shocks as shown on our website. All warranties will become void if Fabtech parts are combined and/or substituted with other aftermarket suspension products. Combination and/or substitution of other aftermarket suspension parts may cause premature wear and/or product failure resulting in an accident causing injury or death. Fabtech does not warrant products not manufactured by Fabtech.

Depending on the condition of the factory suspension components retained after the installation of a Fabtech suspension not all vehicles may have the same ride stance front to rear as described in the website. The blue color of suspension components shown in all Fabtech photographs are for display purposes only. Majority of all Fabtech components will be black specifically where noted with part numbers ending in BK.

Installation of Fabtech product may void the vehicles factory warranty; it is the consumer's responsibility to check with their local vehicle's dealer for warranty disposition before the installation of the product. Some state laws may prohibit modification of suspension to a vehicle in whole or in part. It is the responsibility of the installer and consumer to consult local laws prior to the installation of any Fabtech suspension product to comply with such written laws.

It is the responsibility of the distributor and/or the retailer to review all warranties and warnings of Fabtech products with the consumer prior to purchase.

Fabtech reserves the right to super cede, discontinue, change the design, finish, part number and/or application of parts when deemed necessary without written notice. Fabtech is not responsible for misprints or typographical errors within the website or price sheet. For the most recent Product Warranty and Warnings visit our website [www.fabtechmotorsports.com](http://www.fabtechmotorsports.com)